 **JLL** SEE A BRIGHTER WAY

For Sublease

36 Toronto Street | 4,512 SF

Sublease Overview

Suite	510
Size	4,512 SF
Available	Immediately
Term Until	June 29th, 2030
Asking Net Rent	Contact Listing Agents
Additional Rent	\$27.07 (est. 2025)

- Highlights
- Built out, bright space
 - Move-in ready
 - 5 offices/meeting rooms
 - 1 main boardroom
 - 30 workstations (potentially available)
 - Kitchenette/Lunch room
 - Reception



Nearby Amenities

On-Site Retailers

Poké Box, Bar Goa, Coffee at Carlton’s, OEB Breakfast Co., and Curatus Wine Club

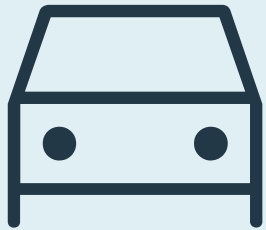
Nearby

Terroni, Nami, Versus Coffee, and Goodlife Fitness

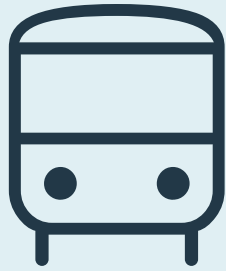
Property Highlights



Certifications



1 / 4,300
Parking Ratio



Steps from
King Subway Station



Steps from
PATH Connection

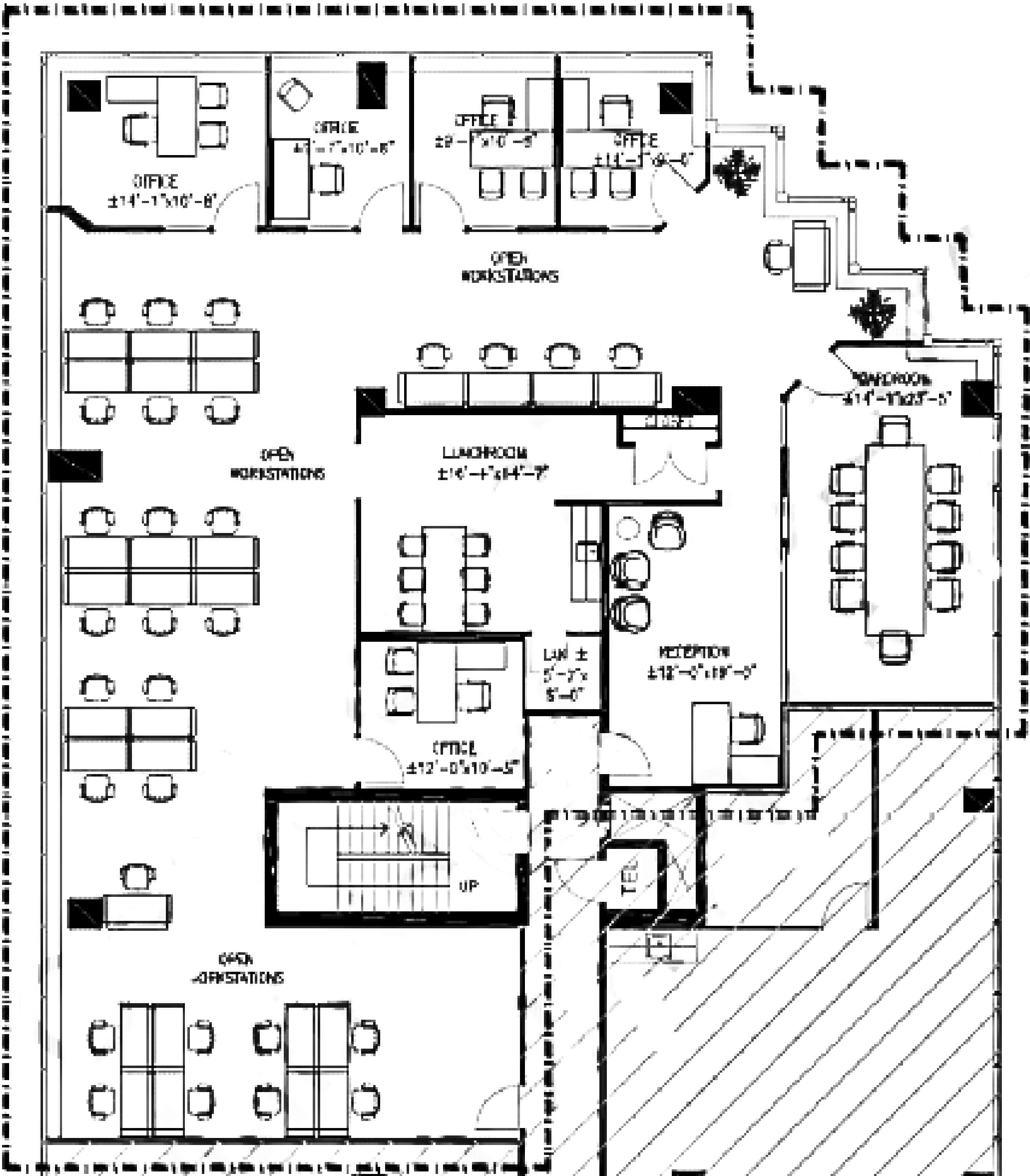
Photos

Suite 510 - 4,512 SF



Floor Plan

Suite 510 - 4,512 SF



JLL

Sean Cline*
Vice President
sean.cline@jll.com
+1 (647) 920 2113

Sam Meer*
Executive Vice President
sam.meer@jll.com
+1 (416) 304 6045

Brandon Marcello*
Associate
brandon.marcello@jll.com
+1 (647) 919 9194

Although information contained herein has been obtained from sources deemed reliable, the owner, Jones Lang LaSalle Real Estate Services, Inc. ("JLL Canada"), and/or their representatives, brokers or agents make no guarantees as to the accuracy of the information contained herein, and offer the property/portfolio without express or implied warranties of any kind. The property/portfolio may be withdrawn without notice. If the recipient of this information has signed a confidentiality agreement regarding this matter, this information is subject to the terms of that agreement. © 2025 JLL Canada. All rights reserved.

***Sales Representative **Broker**