

INDUSTRIAL LAND

For Sale

5703 HAMLET AVENUE
CLEVELAND, OH



ACRES AVAILABLE

12.5







5703 HAMLET AVENUE

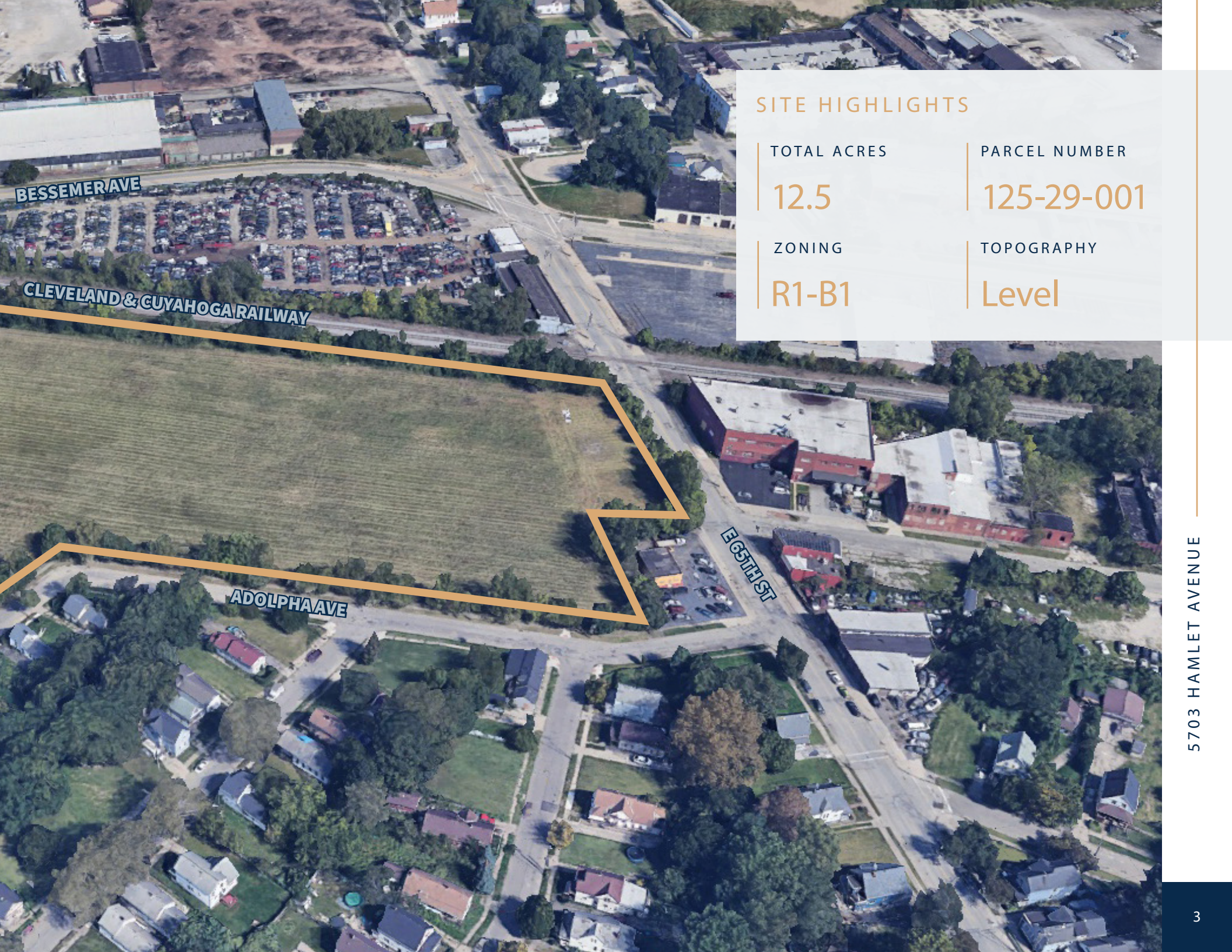
FOR SALE

12.5 acres of infill industrial land is available for sale in Cleveland. This site is uniquely located near downtown Cleveland with easy access to major interstates (1.2 miles to I-490; 2 miles to I-77; 4 miles to I-71; 4 miles to I-90) and Opportunity Corridor (1.2 miles). The property is zoned Residence-Industry (R1-B1) and is located adjacent to a historically heavy industrial area. The site offers a rare opportunity to acquire prime vacant land in a market with tight supply.

PROPERTY OVERVIEW

-  For Sale - \$1,625,000 (\$130,000 per Acre)
-  Site was the home of a BP oil refinery for many years. All facilities have been razed and extensive environmental remediation has been completed
-  Located near Norfolk Southern rail line with possible access
-  Great access via I-77, I-490, I-90 , I-71 & I-480. Located just 2 miles southeast of Downtown Cleveland





BESSEMER AVE

CLEVELAND & CUYAHOGA RAILWAY

ADOLPH AVE

E 65TH ST

SITE HIGHLIGHTS

TOTAL ACRES

12.5

PARCEL NUMBER

125-29-001

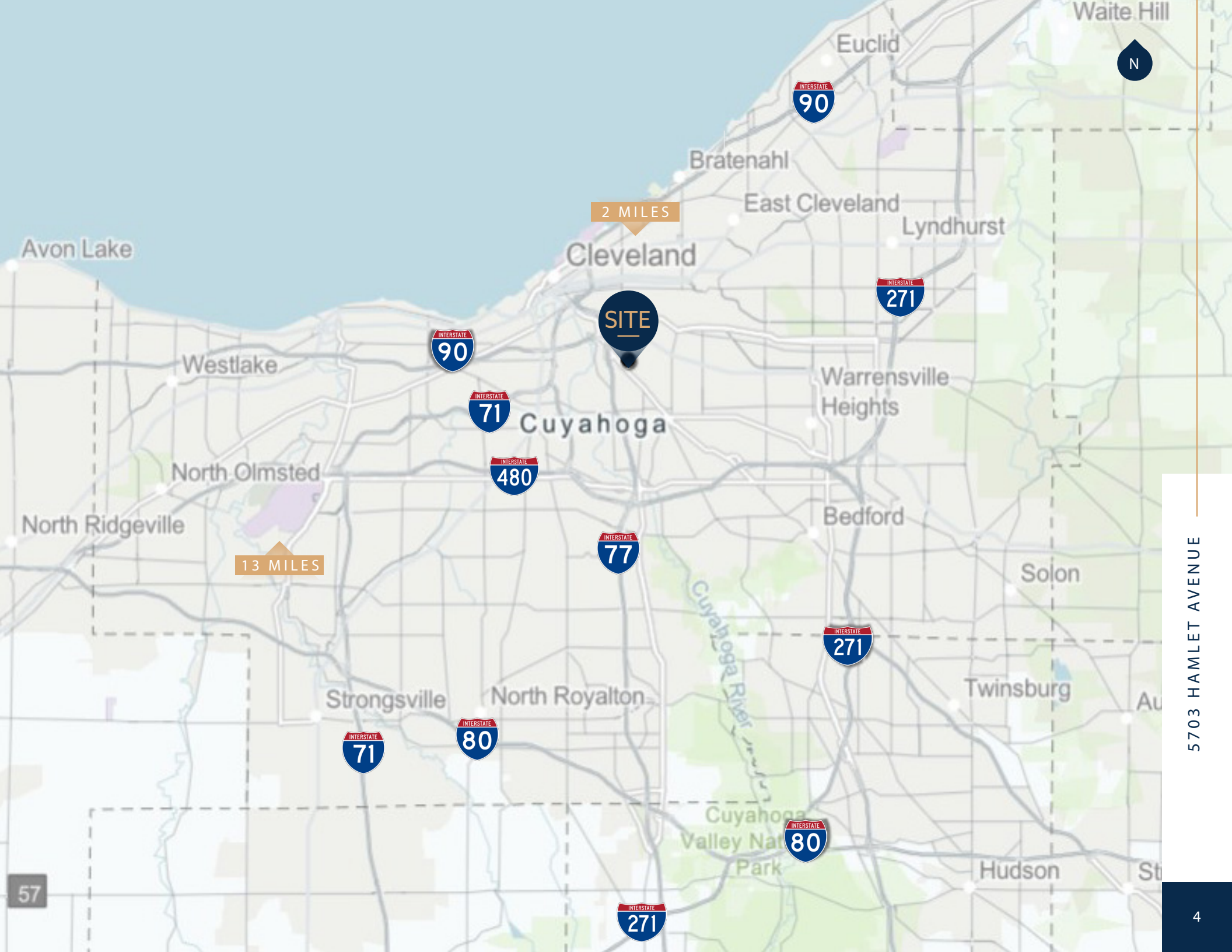
ZONING

R1-B1

TOPOGRAPHY

Level

5703 HAMLET AVENUE



5703 HAMLET AVENUE

AERIAL VIEW



CONTACT US

DON BAIN, JR SIOR

Executive Vice President

don.bainjr@jll.com

+1 216 937 4377

SAM EVERSON

Associate

samuel.everson@jll.com

+1 216 912 4509



Although information has been obtained from sources deemed reliable, neither Owner nor JLL makes any guarantees, warranties or representations, express or implied, as to the completeness or accuracy as to the information contained herein. Any projections, opinions, assumptions or estimates used are for example only. There may be differences between projected and actual results, and those differences may be material. The Property may be withdrawn without notice. Neither Owner nor JLL accepts any liability for any loss or damage suffered by any party resulting from reliance on this information. If the recipient of this information has signed a confidentiality agreement regarding this matter, this information is subject to the terms of that agreement. ©2025 Jones Lang LaSalle IP, Inc. All rights reserved.