

19224 LONGMEADOW RD
HAGERSTOWN, MD 21742

FOR SALE OR LEASE

287,300 SF on 20 Acres Divisible



SALE BENEFITS
EXISTING TOWER INCOME
SOLAR ROOF LEASE



JLL INDUSTRIAL

BEN MEISELS

443 451 2614

ben.meisels@jll.com

RYAN BURROWS

443 342 1514

ryan.burrows@jll.com

Property Highlights

- For Sale or Lease
- 287,300 SF on 20 Acres
- Divisible
- Rail served (CSX)
- Clear Height:
 - * North Side: 25' - 37'
 - * South Side: 18' - 24'
- Immediate Availability
- Dock and Drive-in Loading
- Former Warehouse Certification:
 - * GMP with UL Lab
 - * SFI, FSC and PEFC with Intertek
 - * ISO 14001, Enviromental, as a dependent of Sanford Mill certificated
- Wet Sprinkler
- Heavy Power
- LED Lighting on motion sensors
- IG Zoning
- 1.75 Acres of IOS/Parking
- Easy access to I-81



LOCATION

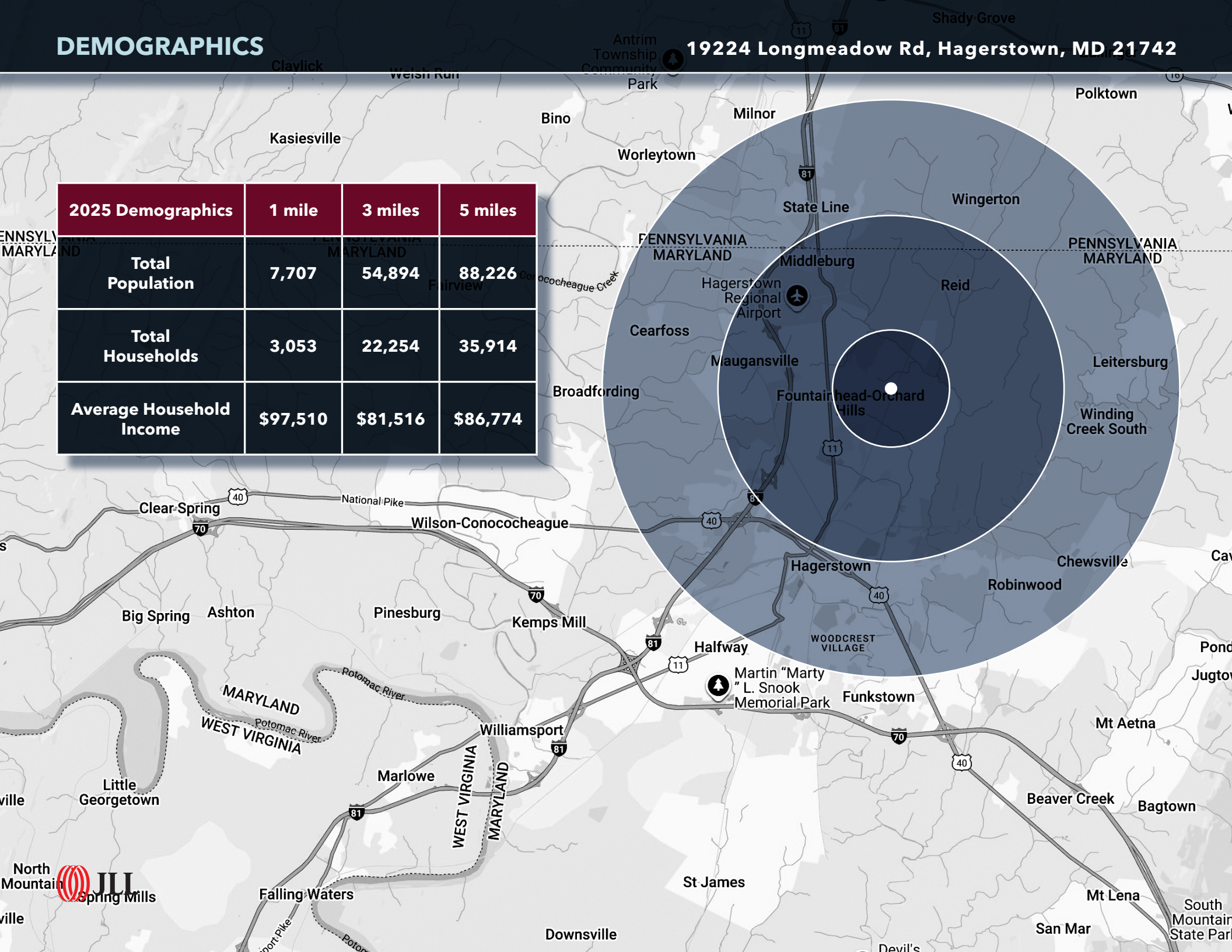
19224 Longmeadow Rd, Hagerstown, MD 21742



DEMOGRAPHICS

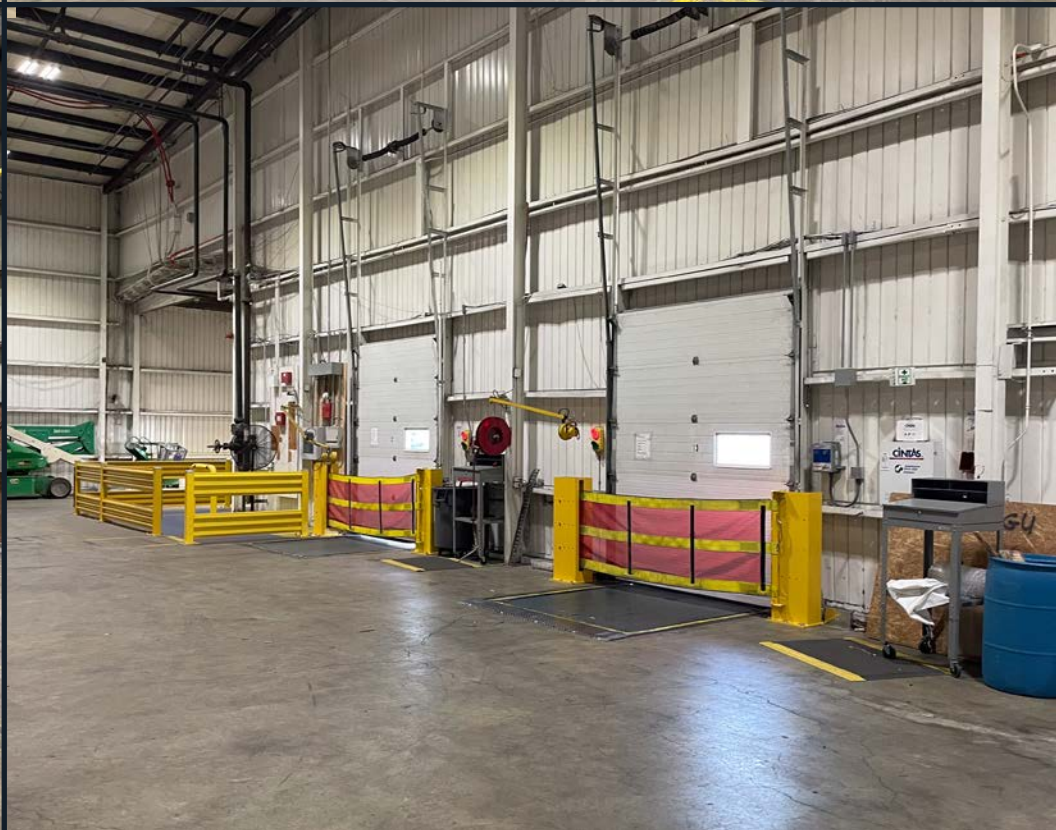
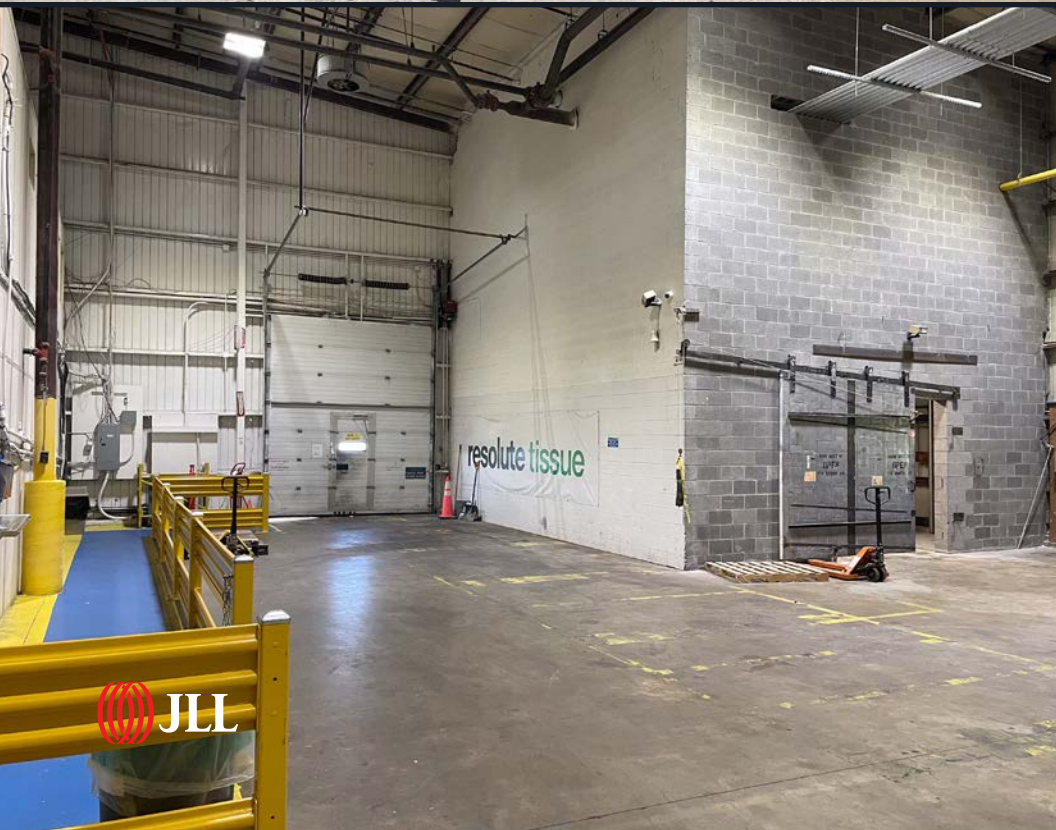
19224 Longmeadow Rd, Hagerstown, MD 21742

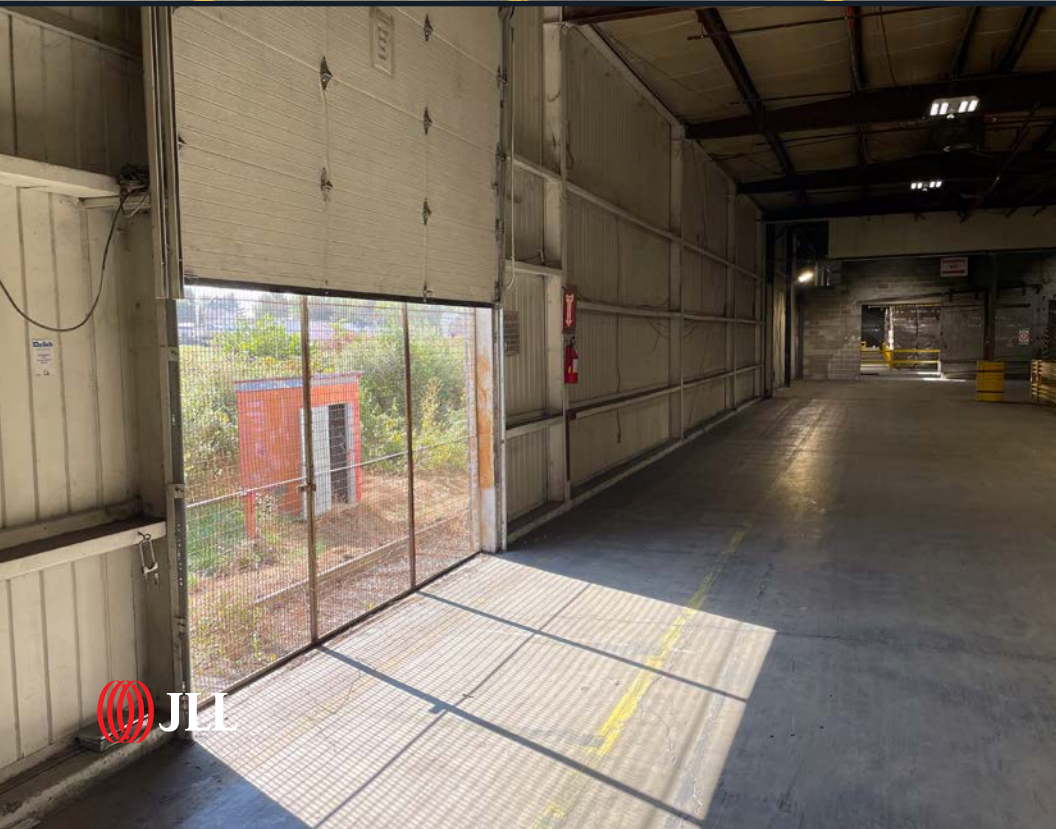
2025 Demographics	1 mile	3 miles	5 miles
Total Population	7,707	54,894	88,226
Total Households	3,053	22,254	35,914
Average Household Income	\$97,510	\$81,516	\$86,774











Although information has been obtained from sources deemed reliable, JLL does not make any guarantees, warranties or representations, express or implied, as to the completeness or accuracy as to the information contained herein. Any projections, opinions, assumptions or estimates used are for example only. There may be differences between projected and actual results, and those differences may be material. JLL does not accept any liability for any loss or damage suffered by any party resulting from reliance on this information. If the recipient of this information has signed a confidentiality agreement with JLL regarding this matter, this information is subject to the terms of that agreement. ©2025 Jones Lang LaSalle Brokerage, Inc. All rights reserved.

**FOR MORE INFORMATION,
PLEASE CONTACT:**

BEN MEISELS

443 451 2614

ben.meisels@jll.com

RYAN BURROWS

443 342 1514

ryan.burrows@jll.com

