

# For lease

222 Bloomingdale Road White Plains, NY  
A solution for any sized tenant





## Location Map



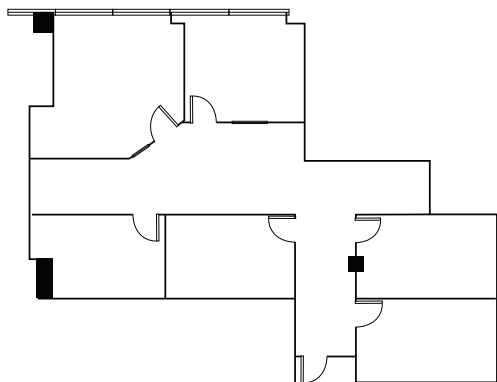
### Restaurants & Food

1. Tre Angelina
2. What a Bagel cafe
3. Chop It Up salads and smoothies
4. Ice Cream Social
5. Araras Coffee & More

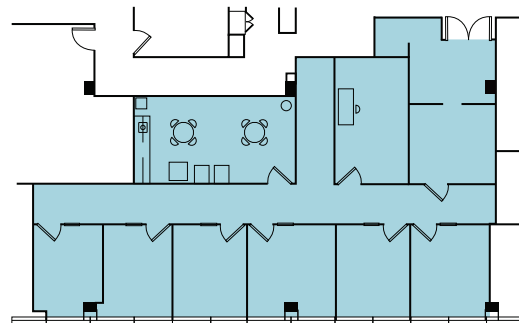
### Services

6. Whole Foods Market
7. The Westchester (0.7 Miles)
8. Bloomingdales
9. Orangetheory Fitness
10. CVS

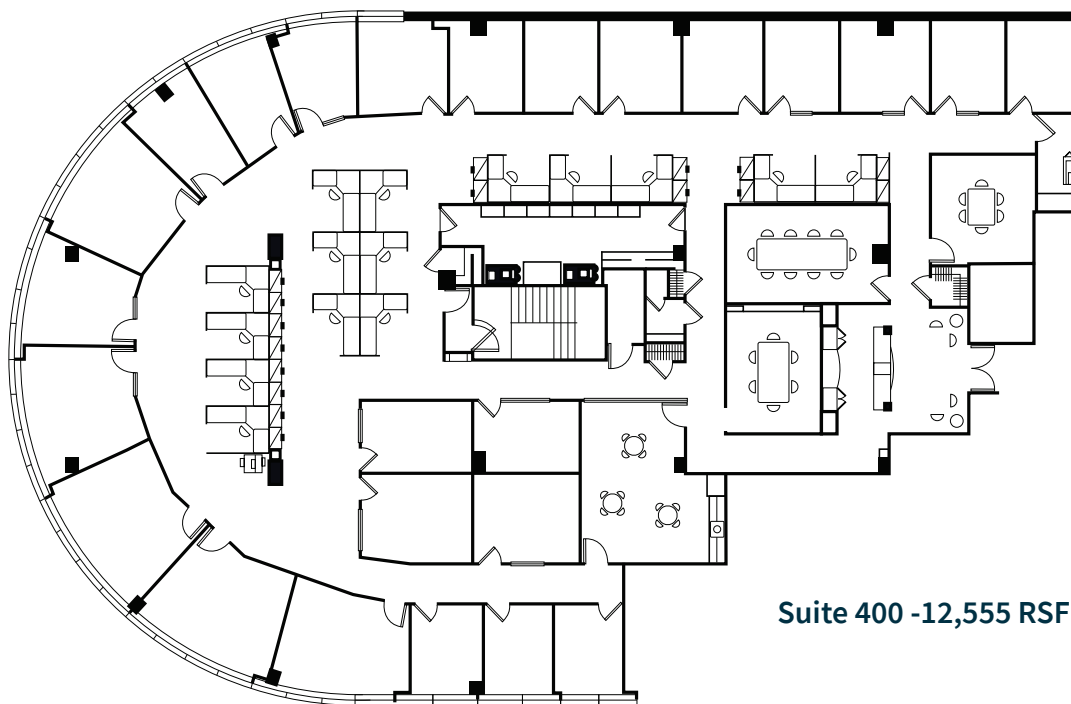
# Floor Plans



**Suite 303a -1,594 RSF**



**Suite 412 -2,421 RSF**



**Suite 400 -12,555 RSF**

## Highlights

- Excellent access to I-287, Merritt Parkway, and I-95.
- 4 minute drive to White Plains station; 12 minutes to Westchester County Airport
- At the corner of Mamaroneck Avenue and Bloomingdale Road
- Uber service to and from White Plains Train Station
- Newly upgraded common areas
- Rent- \$28.00 Gross + electric
- Term- Flexible
- On-site property management and ownership
- 3 Levels of structured parking - 3.4/1,000
- On-site Kiddie Academy daycare
- Short walk to the Westchester

# Thank you

## About JLL

For over 200 years, JLL (NYSE: JLL), a leading global commercial real estate and investment management company, has helped clients buy, build, occupy, manage and invest in a variety of commercial, industrial, hotel, residential and retail properties. A Fortune 500® company with annual revenue of \$20.9 billion and operations in over 80 countries around the world, our more than 103,000 employees bring the power of a global platform combined with local expertise. Driven by our purpose to shape the future of real estate for a better world, we help our clients, people and communities SEE A BRIGHTER WAY<sup>SM</sup>. JLL is the brand name, and a registered trademark, of Jones Lang LaSalle Incorporated. For further information, visit [jll.com](https://jll.com).

## JLL

### Al Gutierrez

*Senior Managing Director*

[al.gutierrez@jll.com](mailto:al.gutierrez@jll.com)

(914) 419 . 3446

### Rick Rosencrans

*Vice President*

[rick.rosencrans@jll.com](mailto:rick.rosencrans@jll.com)

(203) 561 . 0617