

For lease

Warehouses with large yards

Building C: $\pm 24,400$ SF with $\pm 18,131$ SF yard

Building D: $\pm 9,600$ SF with $\pm 14,365$ SF yard

3730 & 3750 Happy Lane
Sacramento, CA 95827

Located in the Happy Lane Business Park, less than 2 miles south of Highway 50 at the Bradshaw Road exit. The original Business Park was completed in 2009, these two buildings are the final phase.

- Zoning: M-1, Light Industrial (County of Sacramento)
- Grade-level loading
 - Building C: 12'x14' (1) and 16'x14' (3)
 - Building D: 12'x14' (2)
- Spec office:
 - Building C: $\pm 1,339$ SF
 - Building D: $\pm 1,043$ SF
- Electrical service:
 - 800 amps, 120/280v each building
(to be independently verified by tenant prior to entering into a binding agreement)
- Clear height: $\pm 22'$
- Asking lease rate:
 - contact Broker for more information

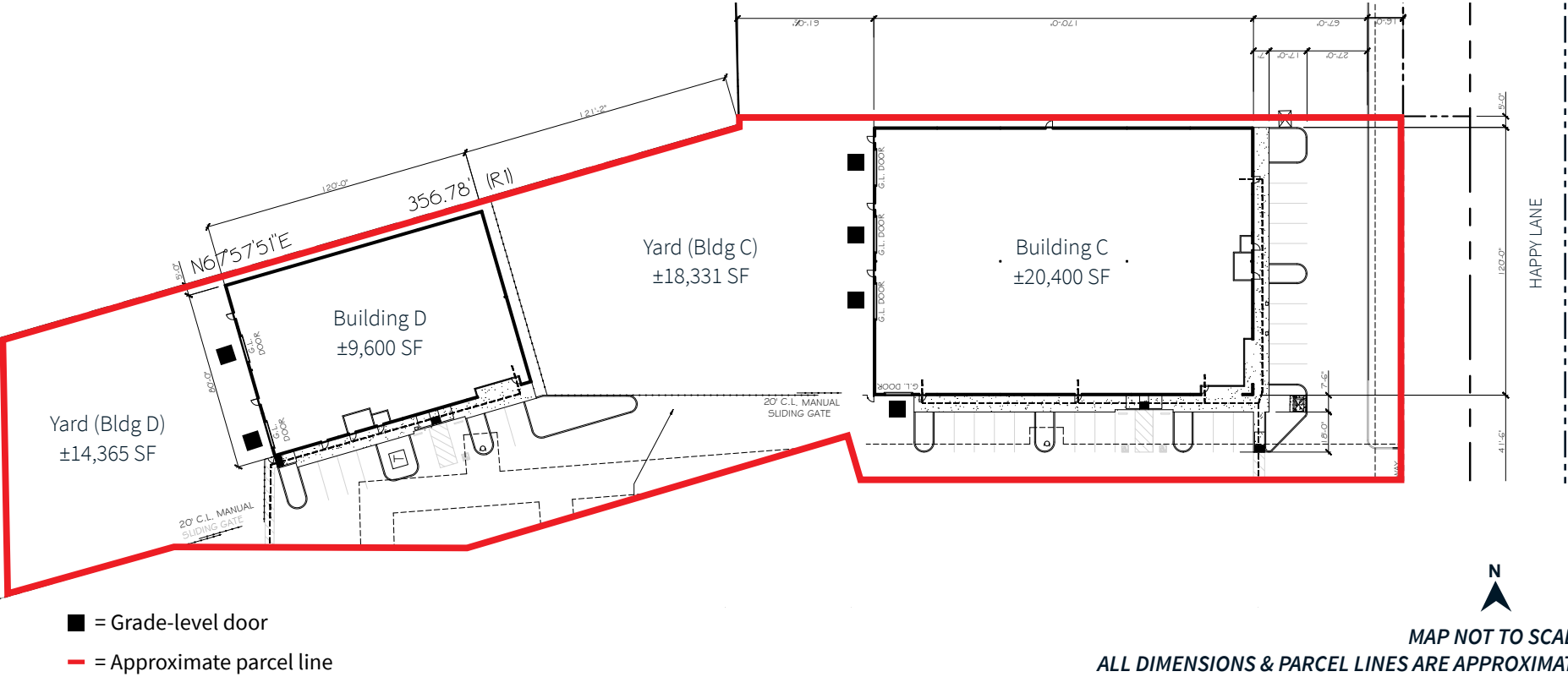


Under Construction | May 2026 estimated delivery date

Site plan

Building C: 3730 Happy Lane	
Total SF	±20,400
Office SF	±1,339
Parking	28 spaces
Yard area	±18,331 SF
Grade-level loading	4 grade-level doors

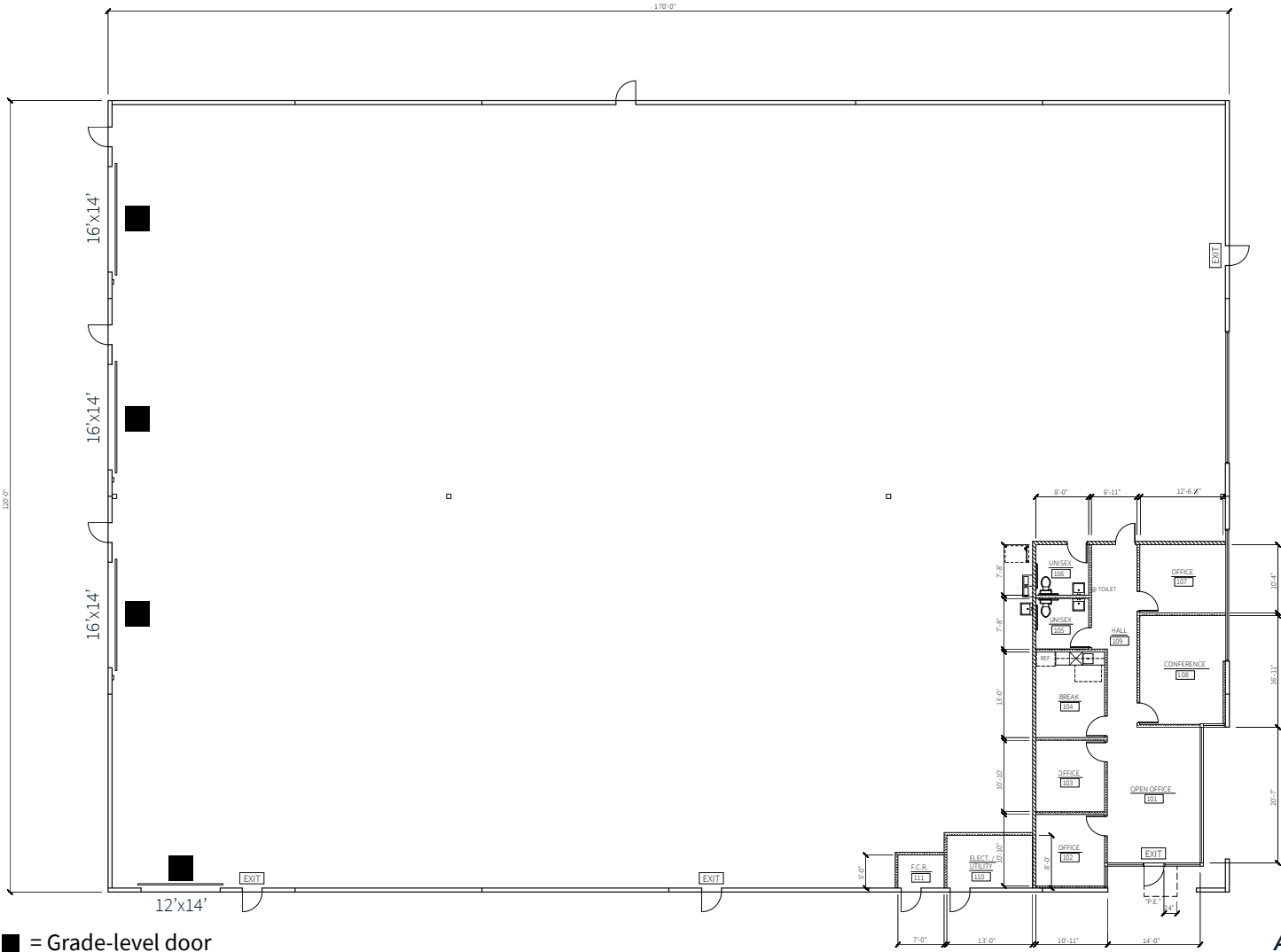
Building D: 3750 Happy Lane	
Total SF	±9,600
Office SF	±1,043
Parking	8 spaces
Yard area	±14,365 SF
Grade-level loading	2 grade-level doors



Building C floor plan

Total SF: ±20,400

Includes: ±1,339 SF office | ±19,061 SF warehouse

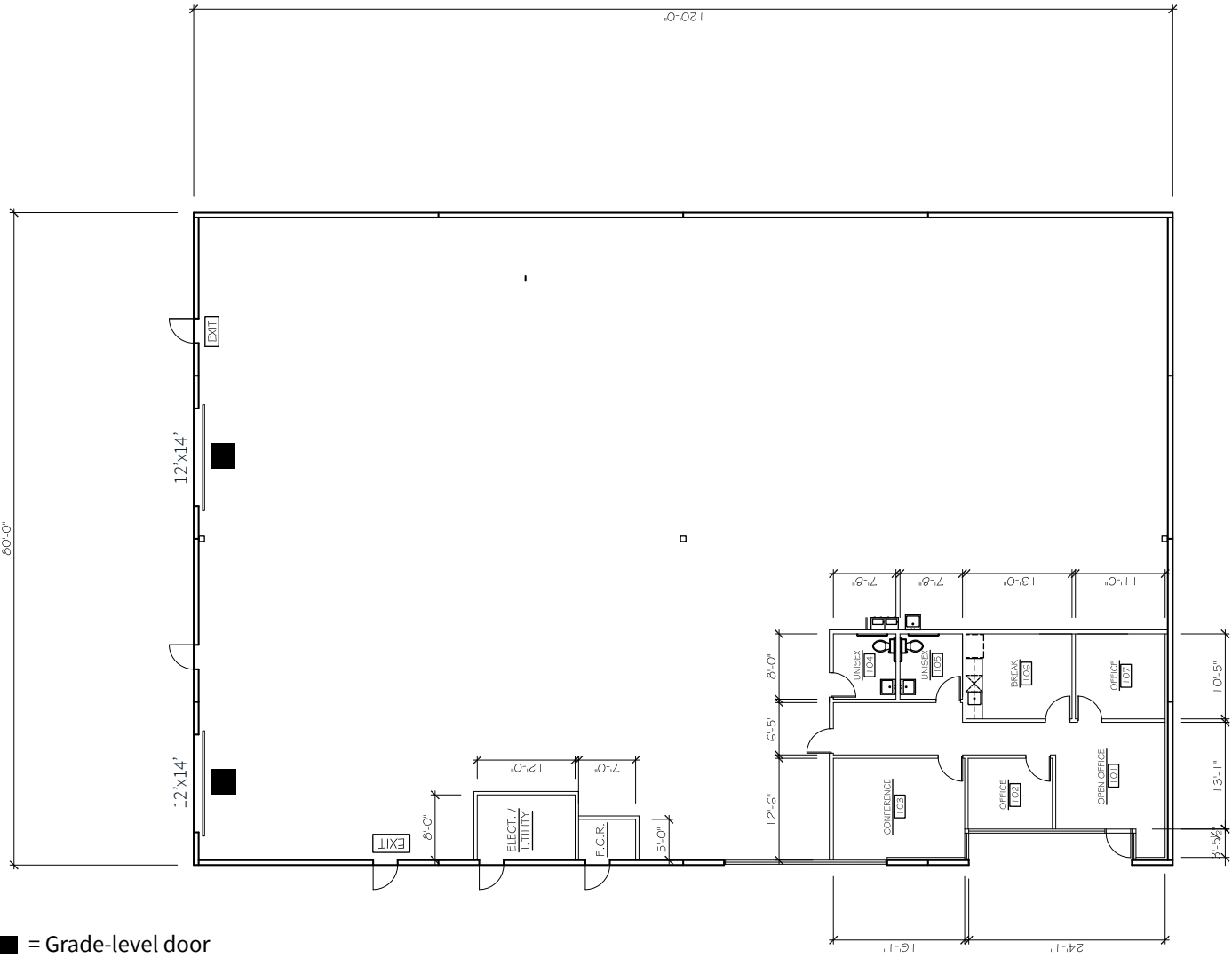


FLOOR PLAN NOT TO SCALE.
ALL MEASUREMENTS ARE APPROXIMATE.

Building D floor plan

Total SF: ±9,600

Includes: ±1,043 SF office | ±8,557 SF warehouse

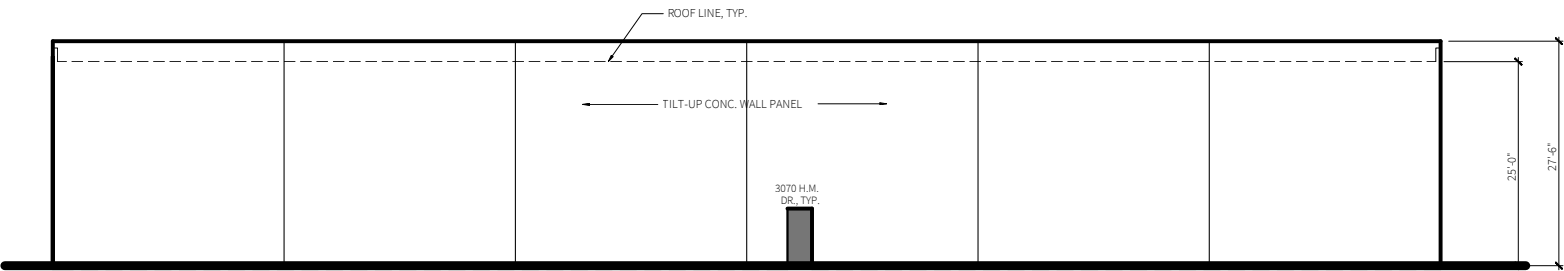


FLOOR PLAN NOT TO SCALE.
ALL MEASUREMENTS ARE APPROXIMATE.

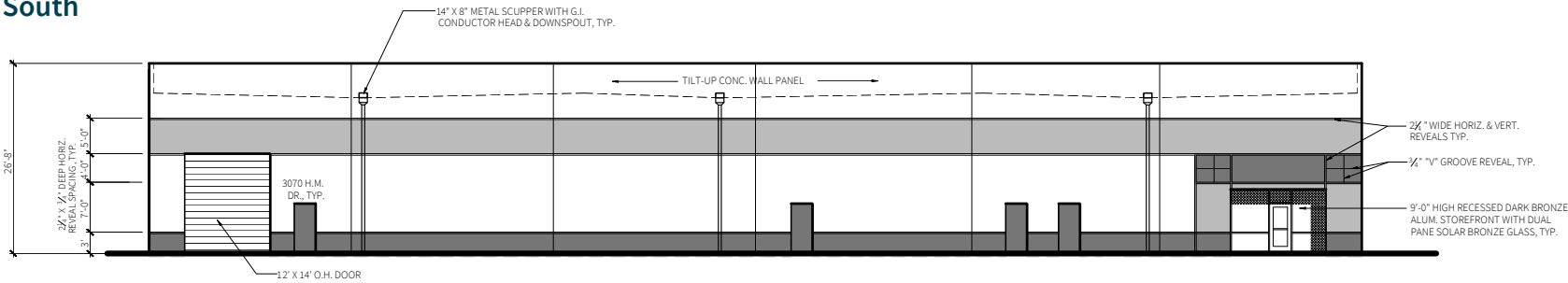
Elevations

Building C

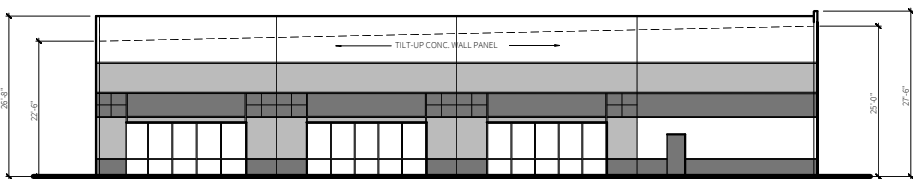
North



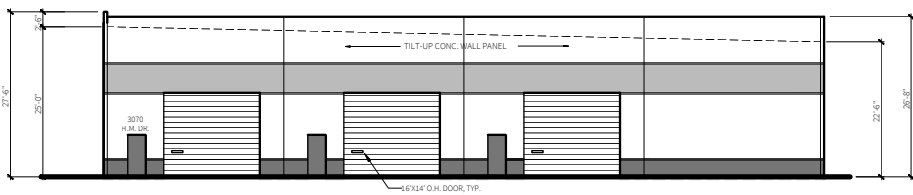
South



East



West

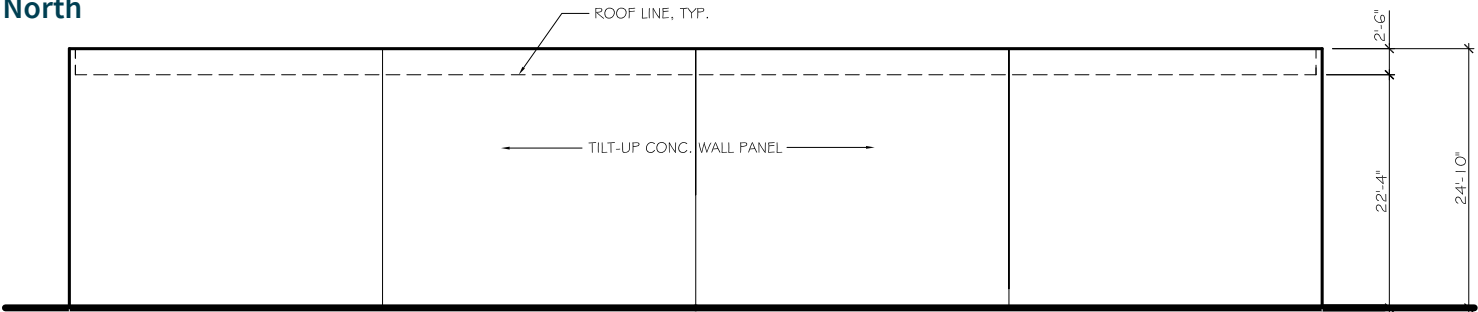


ELEVATIONS NOT TO SCALE.
ALL MEASUREMENTS ARE APPROXIMATE.

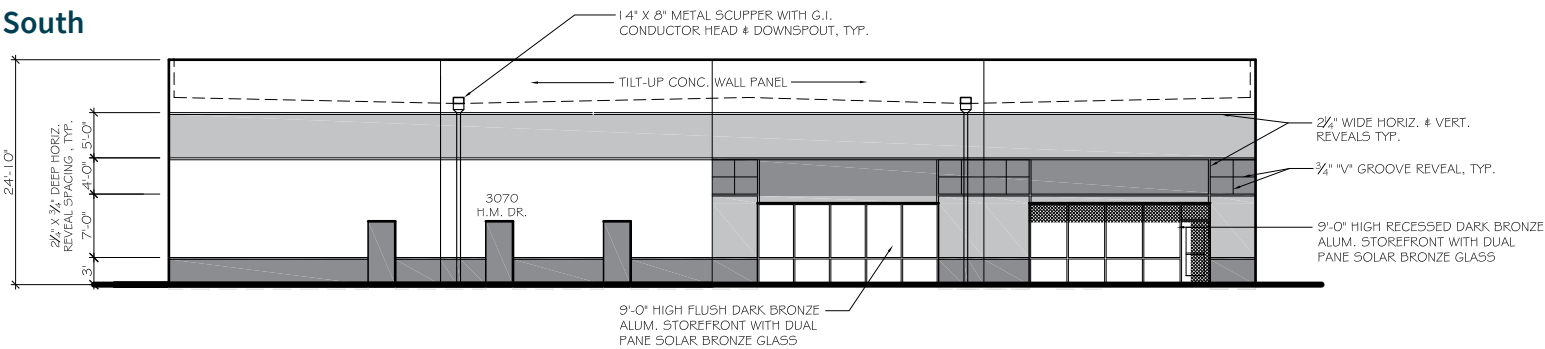
Elevations

Building D

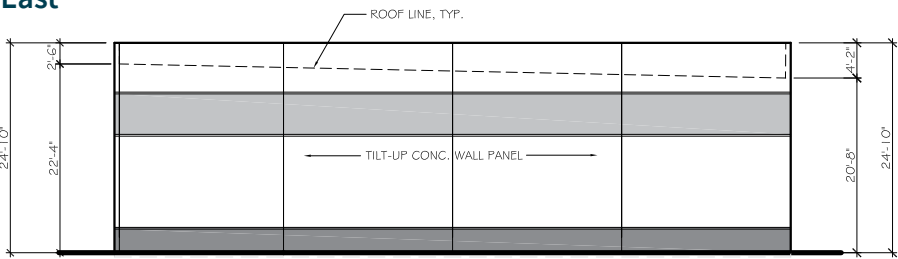
North



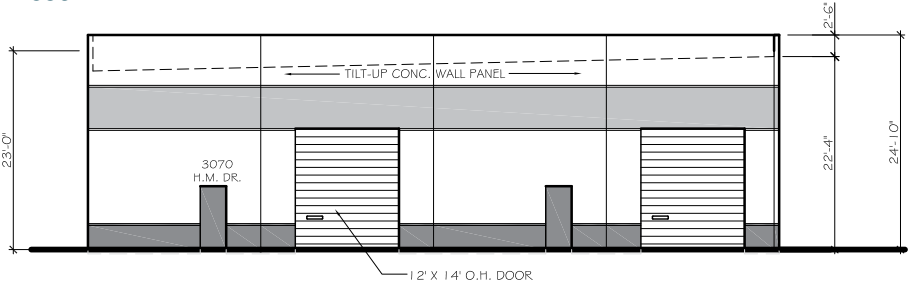
South



East

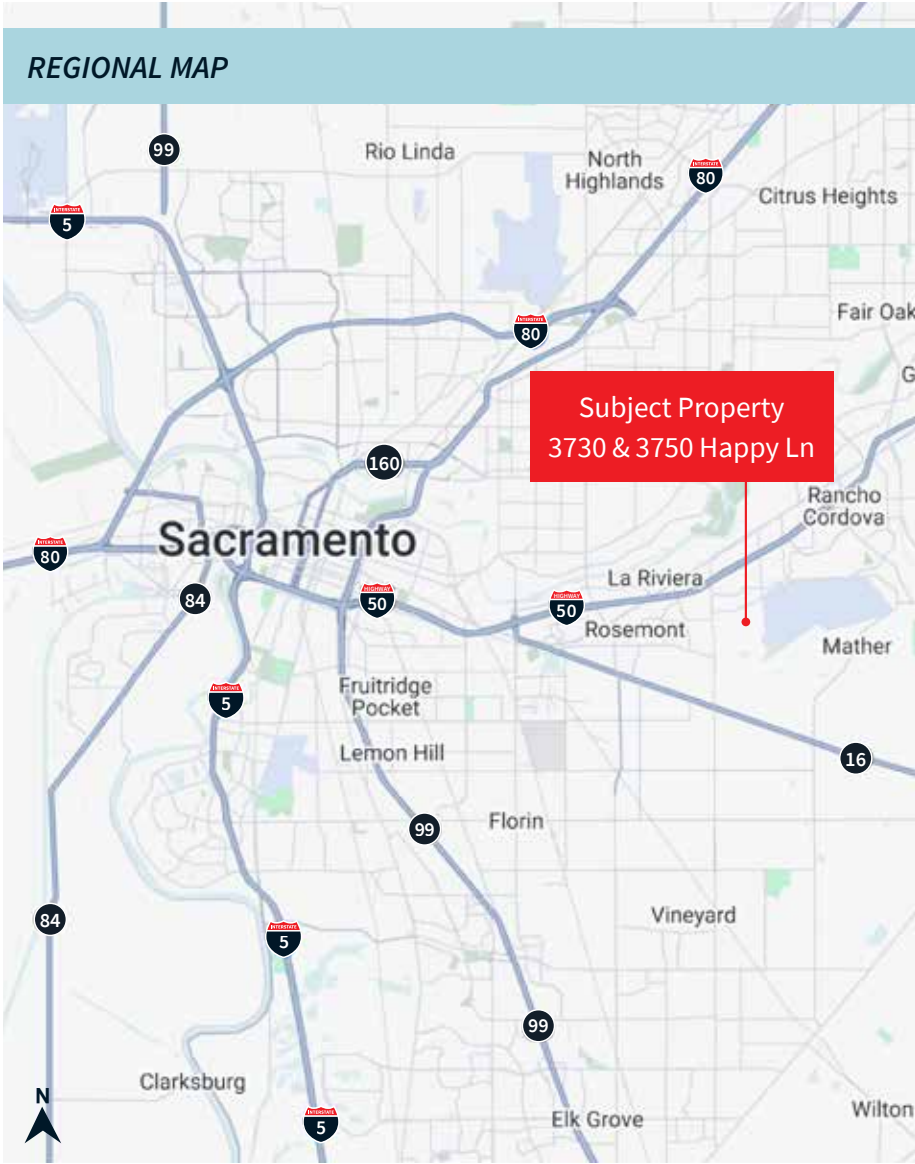
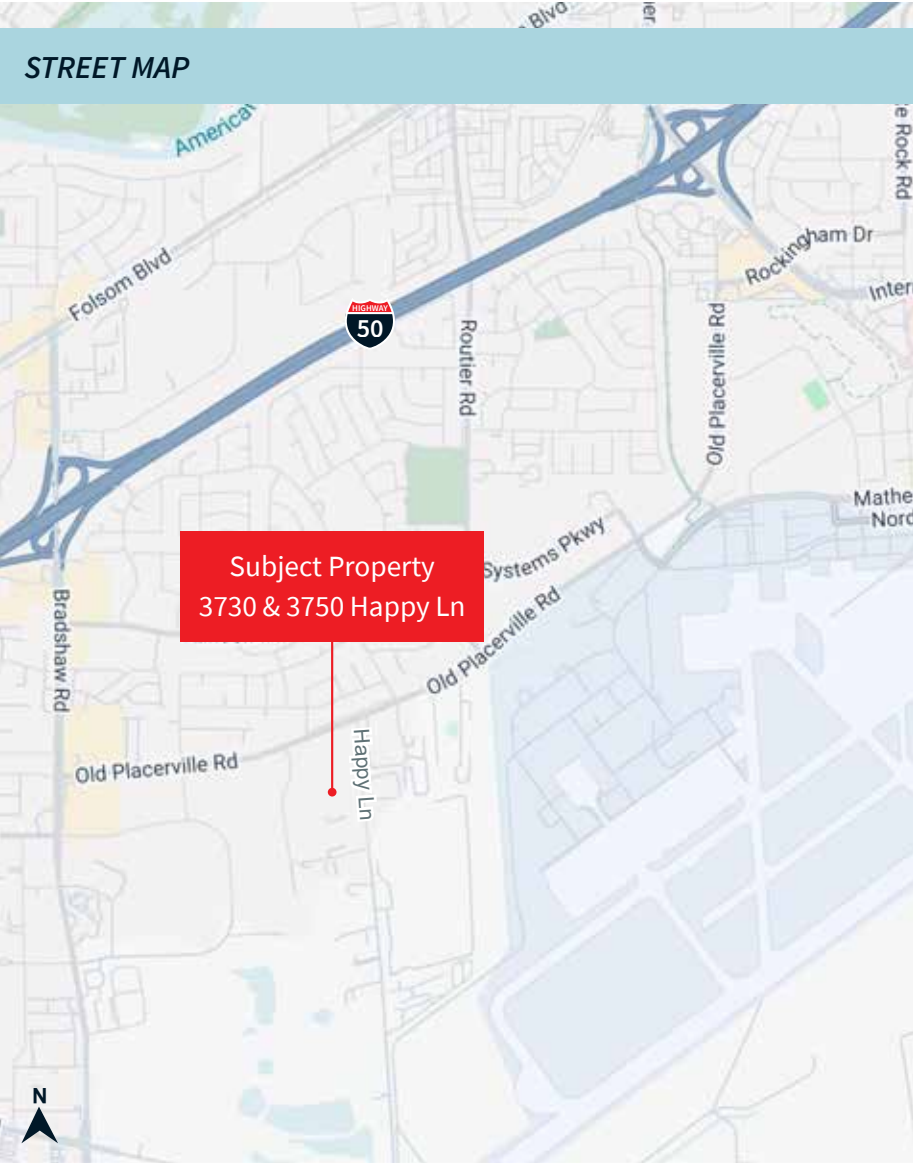


West



ELEVATIONS NOT TO SCALE.
ALL MEASUREMENTS ARE APPROXIMATE.

Location Maps



MAP NOT TO SCALE

For lease

Warehouses with large yards

Building C: ±24,400 SF with ±18,131 SF yard

Building D: ±9,600 SF with ±14,365 SF yard

3730 & 3750 Happy Lane
Sacramento, CA 95827

JLL Sacramento Industrial Team

RJ Jimenez

Associate

RJ.Jimenez@jll.com

+1 916 440 1837

Lic. 02248675

Dominic Smith

Senior Associate

Dominic.Smith@jll.com

+1 916 995 9396

Lic. 02106714

Mike Luca, SIOR

Senior Managing Director

Mike.Luca@jll.com

+1 916 214 0466

Lic. 01447904

*Jones Lang LaSalle Brokerage, Inc.
CA Real Estate License #01856260*