



For lease

150 Greenwood Industrial Parkway

McDonough, GA

255,070 - 867,140 SF Available

GCP | GROWTH
CAPITAL
PARTNERS

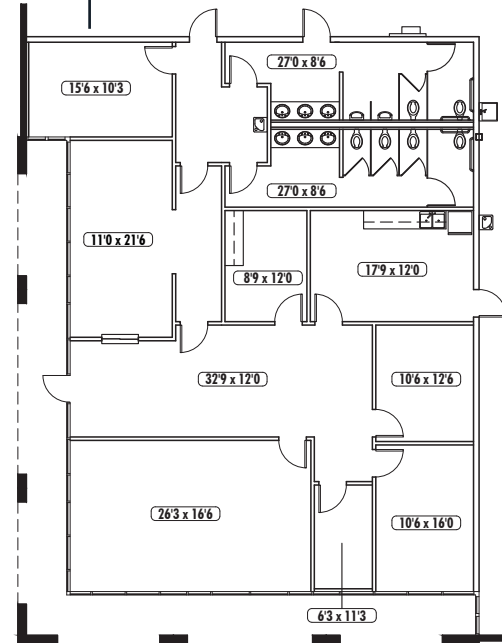
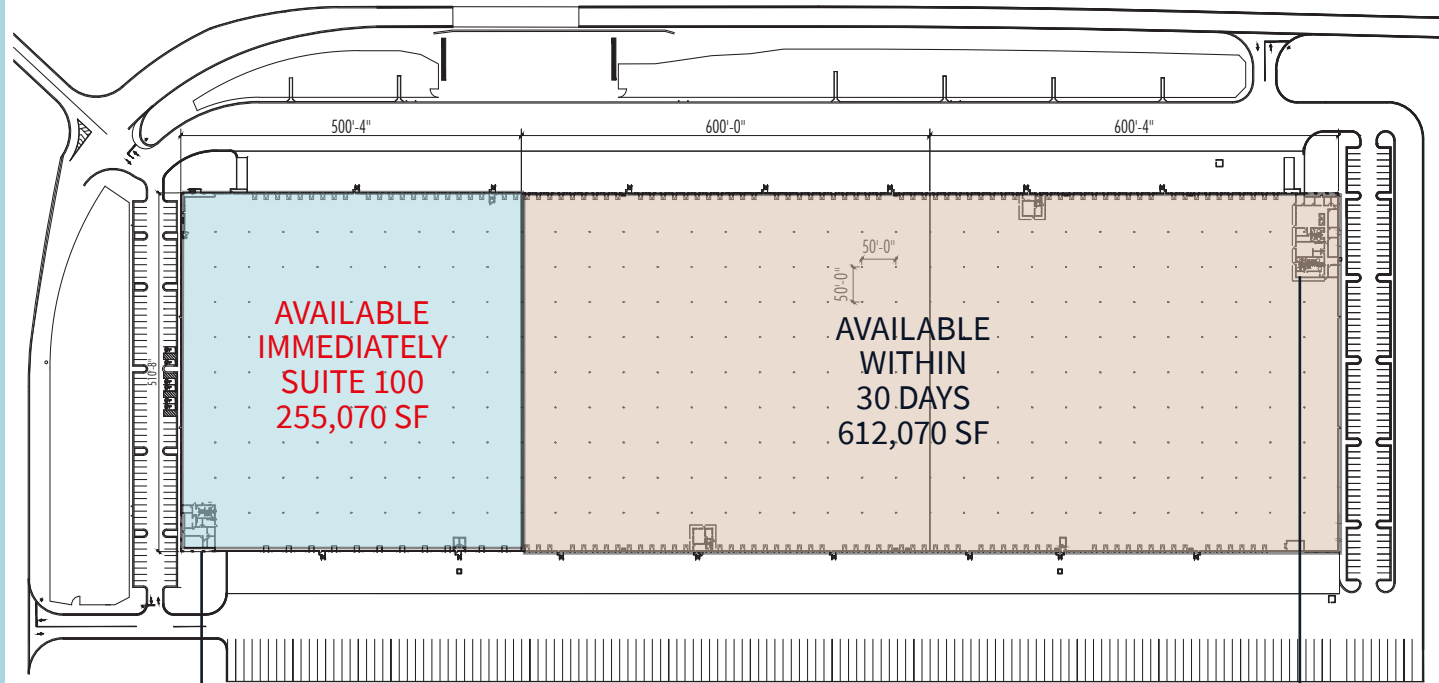


Building specifications

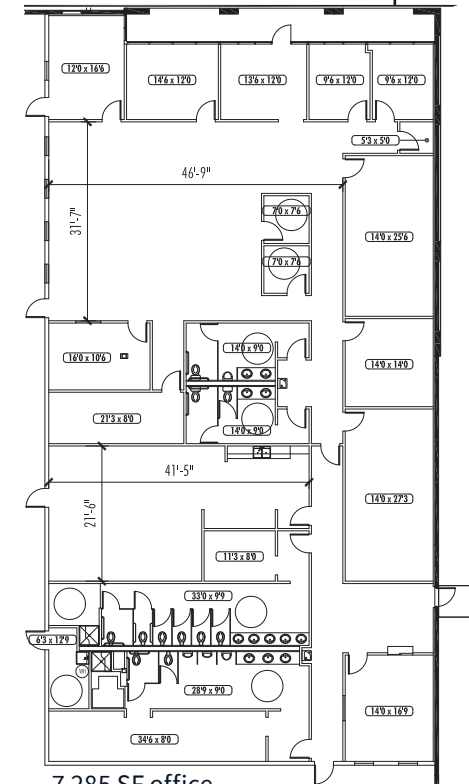
Building size	867,140 SF
Available SF	255,070 - 867,140 SF
Office SF	10,084 SF
Clear height	32'
Configuration	Cross-dock
Column spacing	50' x 50'
Auto parks	126 spaces
Trailer parks	86 spaces
Dock doors	117
Drive-in doors	2
Power	277/480v, 2,000 amps
Sprinkler	ESFR

Suite 100

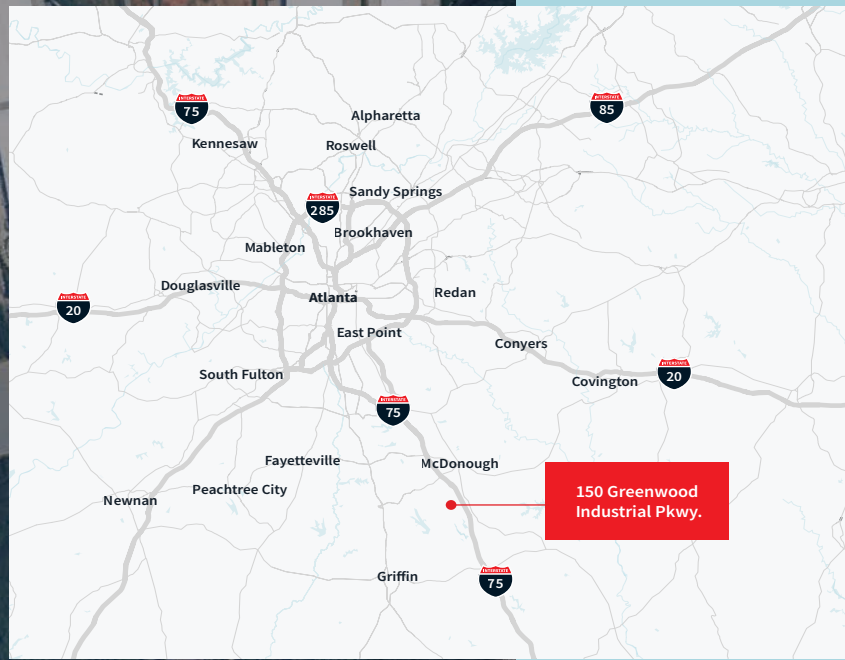
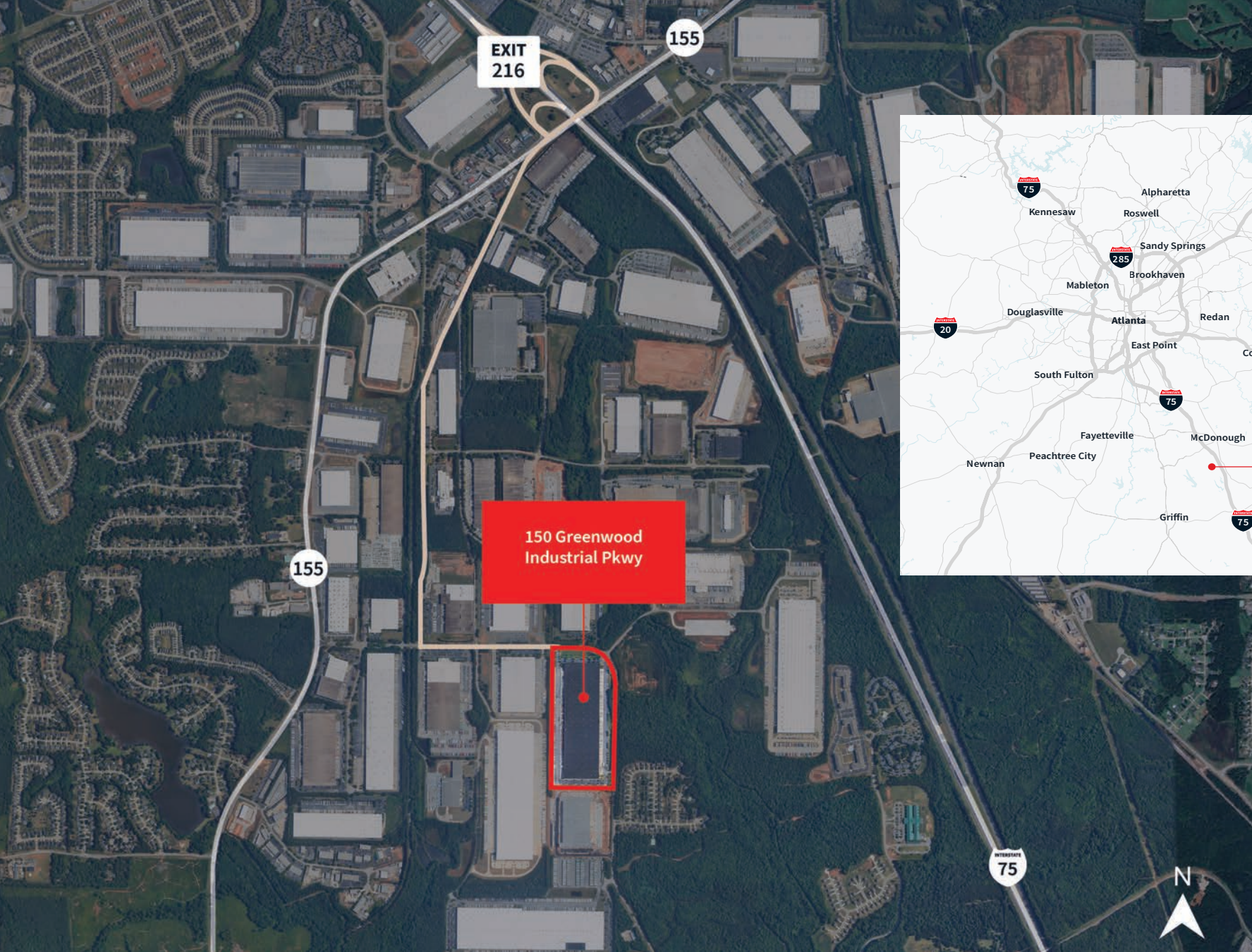
Available SF	255,070 SF
Office SF	2,799 SF
Clear height	32'
Column spacing	50' x 50'
Auto parks	108 spaces
Trailer parks	36 spaces
Dock doors	42
Drive-in doors	1
Power	277/480v, 2,000 amps
Sprinkler	ESFR



2,799 SF office



7,285 SF office



INTERSTATES

I-285	24 miles
I-75	5 miles
I-85	30 miles

RAIL

CSX/Fairburn	38 miles
Norfolk Southern/Austell	50 miles

AIR

Hartsfield-Jackson	
Atlanta Int'l Airport	30 miles

PORT CITIES

Savannah, GA	218 miles
Charleston, SC	294 miles
Jacksonville, FL	318 miles



BOB CURRIE
Vice Chairman
bob.currie@jll.com
404.995.2280

REED DAVIS, SIOR
Executive Managing Director
reed.davis@jll.com
404.995.2227

BRAD POPE, SIOR
Executive Managing Director
brad.pope@jll.com
404.995.2261

RYAN MANFREDI
Associate
ryan.manfredi@jll.com
404.995.2118

Although information has been obtained from sources deemed reliable, neither Owner nor JLL makes any guarantees, warranties or representations, express or implied, as to the completeness or accuracy as to the information contained herein. Any projections, opinions, assumptions or estimates used are for example only. There may be differences between projected and actual results, and those differences may be material. The Property may be withdrawn without notice. Neither Owner nor JLL accepts any liability for any loss or damage suffered by any party resulting from reliance on this information. If the recipient of this information has signed a confidentiality agreement regarding this matter, this information is subject to the terms of that agreement. © 2025 Jones Lang LaSalle IP, Inc. All rights reserved.