



UC San Diego

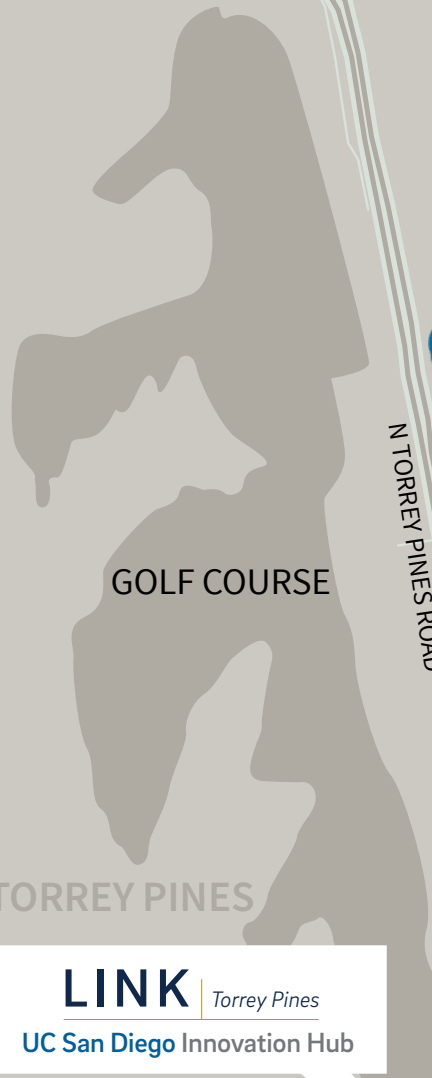
3333 - 10350
N Torrey Pines Ct

LINK | *Torrey Pines*

UC San Diego Innovation Hub

LinkTorreyPines.com

LINK *Torrey Pines*
UC San Diego Innovation Hub



ALTOS™



SYNTHETIC GENOMICS®

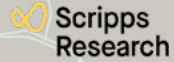
SORRENTO VALLEY



SBP

© Johnson & Johnson

SBP



TORREY PINES

PACIRA
PHARMACEUTICALS, INC.

PACIRA
PHARMACEUTICALS, INC.

Gary & Mary
West Wireless Health
Institute™

conKwest

astellas

GENERAL ATOMICS

LabCorp

ThermoFisher
SCIENTIFIC

GENESEE AVENUE

SALK INSTITUTE
FOR BIOLOGICAL STUDIES

UC San Diego

Click here to take flight and see the unmatched views that **LINK** has to offer

3344

3366

3377

3333

10350

LINK TODAY WITH YESTERDAY

Perched above the Pacific Ocean and nestled along the 10th hole of the Torrey Pines Golf Course, Link boasts panoramic views, awe-inspiring sunsets and cool ocean breezes. Come be a part of this community rich with history, overlooking a famous course built on the site of Camp Callan, a U.S. Army installation during World War II.

TOP 5 BENEFITS

More than a workplace, LINK offers exceptional benefits to keep your team motivated, productive, and energized.

01

Unmatched Quality of Life

Campus setting with Panoramic Pacific Ocean views overlooking the world-famous Torrey Pines Golf Course enhances the workplace experience, providing employees and visitors alike with a sense of balance and well-being.

02

Quick Freeway Access

Minutes from I-5 and I-805 for convenient regional connectivity.

03

Torrey Pines Prestige

Attract top talent by locating in a landmark innovation hub. The only multi-tenant office project in the Torrey Pines market.

04

Enhanced Employee Experience

Benefit your team with exclusive on-site amenities, including a state-of-the-art fitness center, on-site café, and an outdoor ocean view dining patio. Adjacent to the University of California, San Diego campus, with over 50 restaurants and outdoor recreation areas.

05

Flexible Leases + Scalable Space

Expand within the project as your company grows, without relocating. Suites available from 1,000 SF – 46,000 SF.



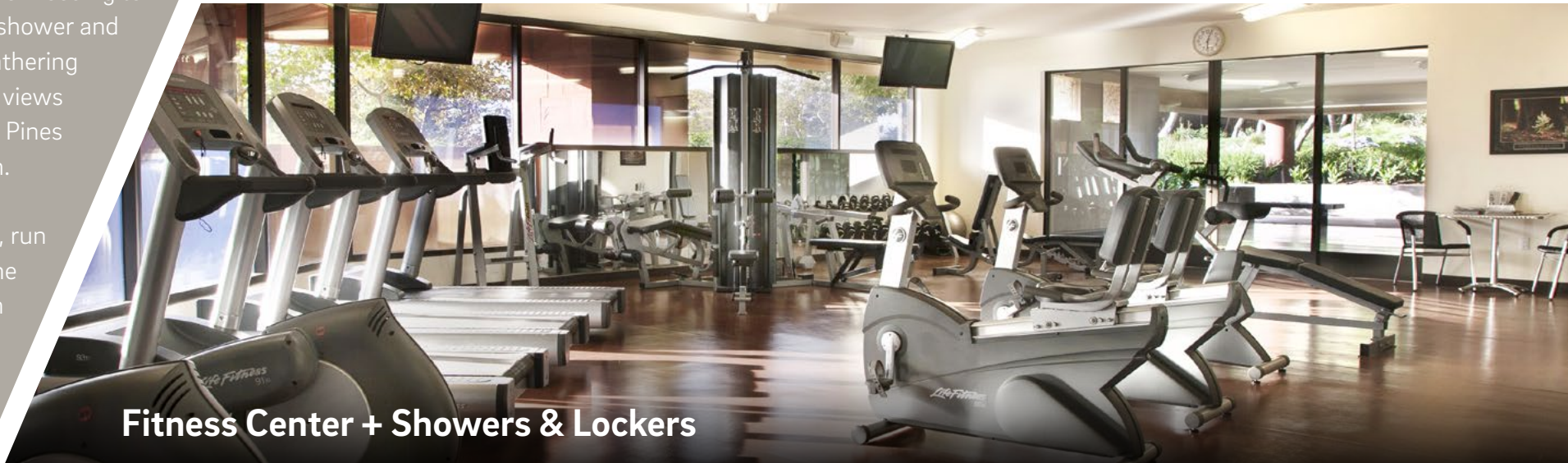
Campus Amenities

On campus without ever needing to leave. Enjoy our gym, shower and lockers, impromptu gathering spaces, and incredible views overlooking the Torrey Pines Golf Course and ocean.

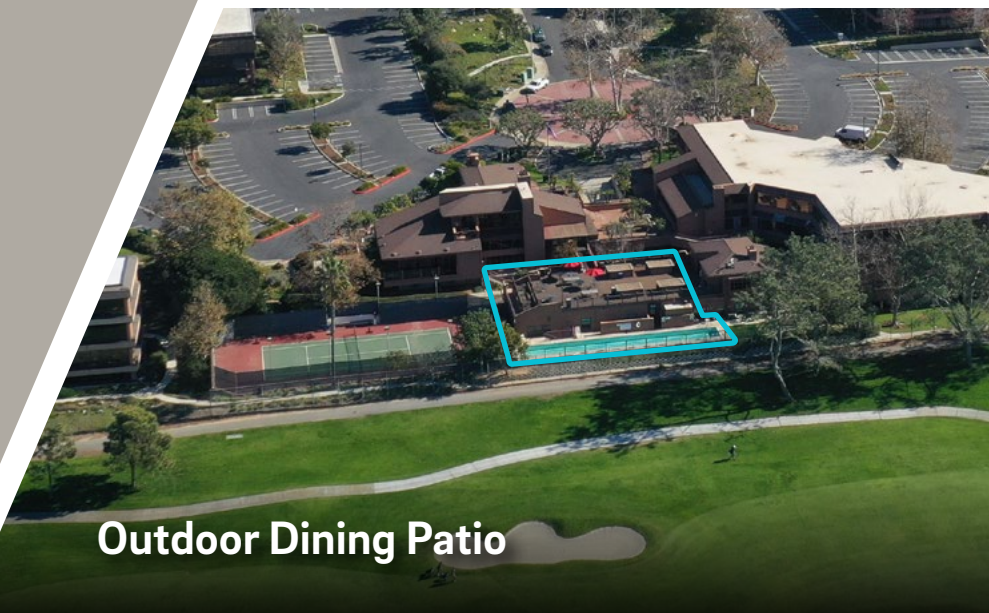
Golf, hike, surf, paddle, run and glide... We offer the quickest access to San Diego's best outdoor activities without wasting extra time.



Outdoor Seating



Fitness Center + Showers & Lockers



Outdoor Dining Patio



Weekly Food Trucks

Nearby Dining Options within ±5-minute drive



Greenfinch | Mustangs and Burros

Cliff Hanger Cafe

LINK Torrey Pines
UC San Diego Innovation Hub

The Grill at Torrey Pines

Bella Vista Social Club

The Bistro at The Strand

The Farmer & The Sea Horse

Cafe Ventanas

Joya Kitchen



LINK TO CHANGE

Are you looking for concrete floors, expansive window lines and modern finishes? Link will change the way you work with just the right workspace.

Availability Summary

Building - Suite	RSF	Details
3333 - Suite 100	8,588	Available October 2026. 11 private offices, large board room, break area, IT room, coffee/production room, storage, open office area.
3333 - Suite 200	13,165	Available October 2026. 20 private offices, 8 conference rooms, break area, IT room, 2 coffee/production rooms, mail room, storage and open office area.
3333 - Suite 300	11,238	Available October 2026. 23 private offices, reception, 2 conference rooms, 2 break areas, IT room, production room, 2 storage rooms, 3 huddle rooms and open office area. Divisible to \pm 5k SF.
3333 - Suite 400	13,487	Available October 2026. Top floor space with 28 private offices, large board room, 2 conference rooms, huddle rooms, mail room, IT room, and production room. Includes a private patio next to large break-area with unmatched ocean views. Building top signage available.
3344 - Suite 100	9,090	Available with 60 days notice. 5 conference/huddle rooms, 7 private offices, 38 workstations, "Zoom" studio, break room and kitchenette, ocean views, private balcony, and private elevator entry to lobby. Building top signage available.
3366 - Suite 110	2,400	Creative space with exposed ceilings, partial ocean views, 2 meeting rooms, conference room, open kitchen, and balance open office.
3366 - Suite 130	3,100	Creative spec suite with ocean views, 3 offices, room for 8 cubicles, conference room, open concept kitchen. Can be combined with Suite 110 for 5,500 SF.
3366 - Suite 225	2,377	Exposed ceiling and floor to ceiling window line, reception, 2 private offices, conference room & break area,
3366 - Suite 318	950	2 offices, copy/print room and reception.
3377 - Suite 150	9,095	Shell space. Direct entry from building exterior. Potential creative space with ocean views.
3377 - Suite 200	15,691	Available with 120 days' notice. Lobby/Reception, 10 private offices, 2 classrooms/training rooms, 4 conference rooms, 2 lounges, 2 workrooms, 2 break areas, open office, restrooms. Contiguous with Suite 300 for up to 31,382 sf.
3377 - Suite 300	15,691	Available with 120 days' notice. Lobby/Reception, 19 private offices, 2 classrooms/training rooms, 4 conference rooms, workroom, open office, patio with ocean views, restrooms. Contiguous with Suite 200 for up to 31,382 sf.



[Take a Virtual Tour - Fitness Center](#)





3333

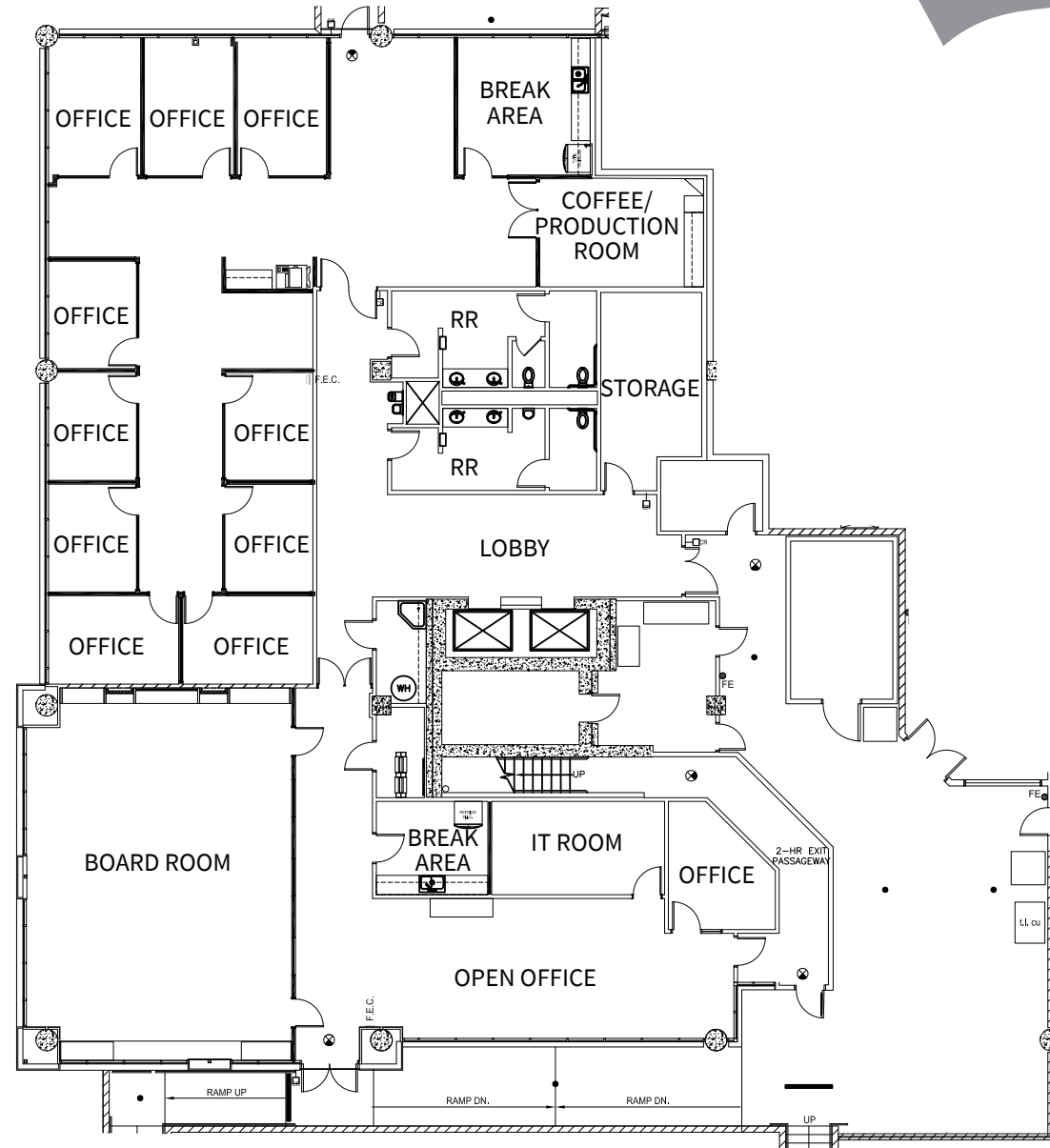
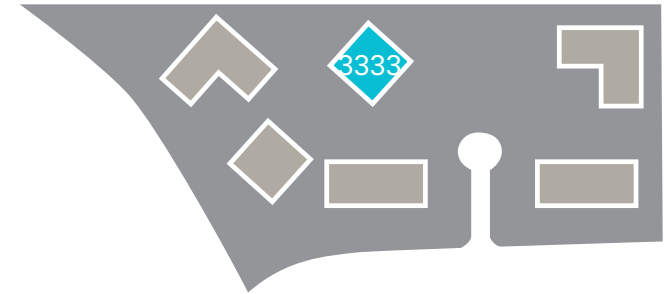


McSweeney's
RESTAURANT

3333 N. Torrey Pines Court | **First floor**
Suite 100 - 8,588 SF | available October 2026

- 11 private offices
- Large board room
- Break area
- IT room
- Coffee / Production room
- Storage
- Open office area

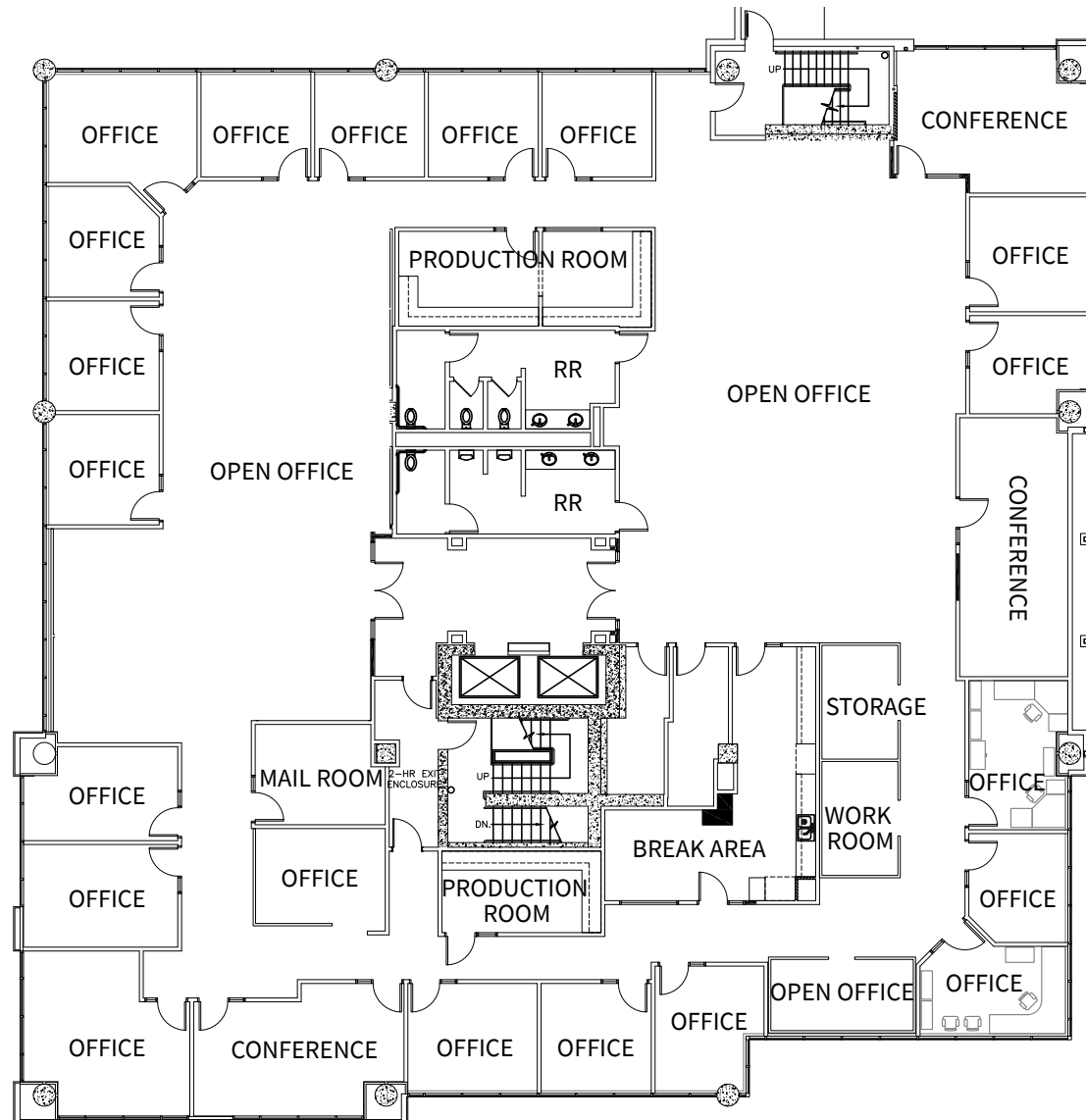
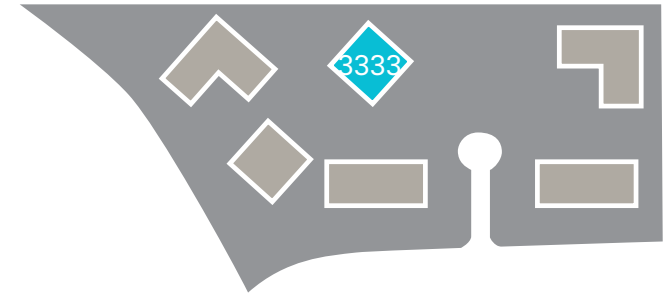
↑ West



3333 N. Torrey Pines Court | **Second floor**
Suite 200 - 13,165SF | available October 2026

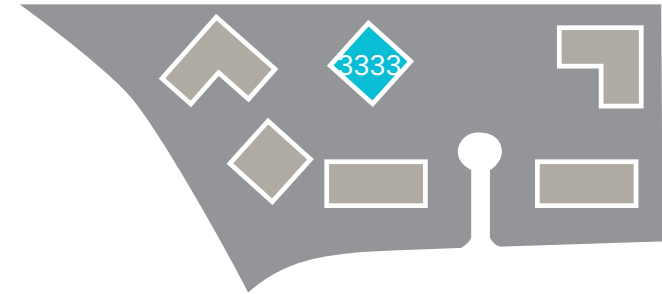
- 20 private offices
- 3 Conference rooms
- Break area
- IT room
- 2 Coffee / Production rooms
- Work room
- Mail room
- Storage
- Open office area

↑ West



3333 N. Torrey Pines Court | **Third floor**
 Suite 300 - 4,990 SF | available October 2026
 Suite 350 - 6,248 SF | available October 2026
 Contiguous up to 11,238 SF

↑ West



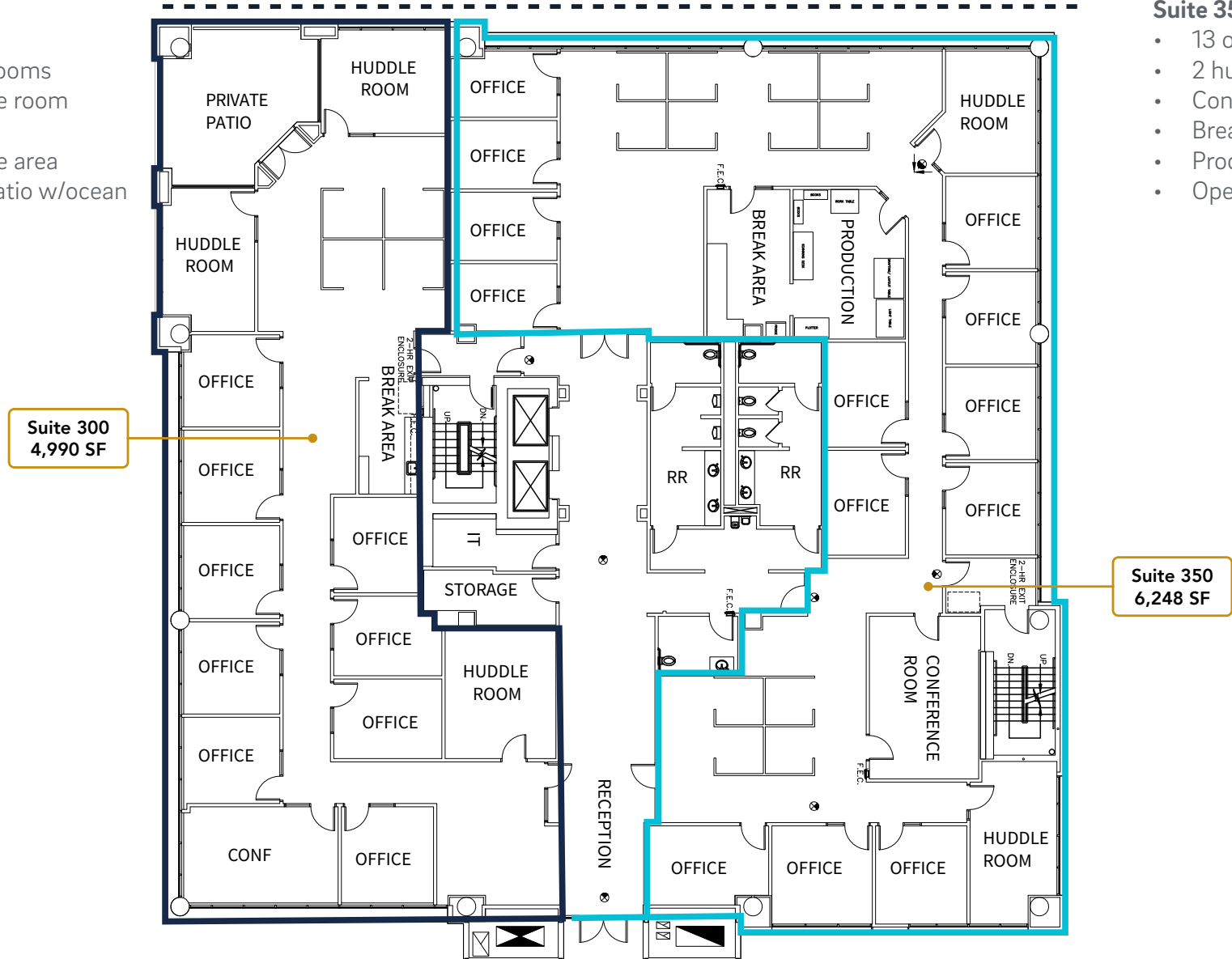
Ocean Views

Suite 300

- 9 offices
- 3 huddle rooms
- Conference room
- Break area
- Open office area
- Outdoor patio w/ocean views

Suite 350

- 13 offices
- 2 huddle rooms
- Conference room
- Break area
- Production area
- Open office area



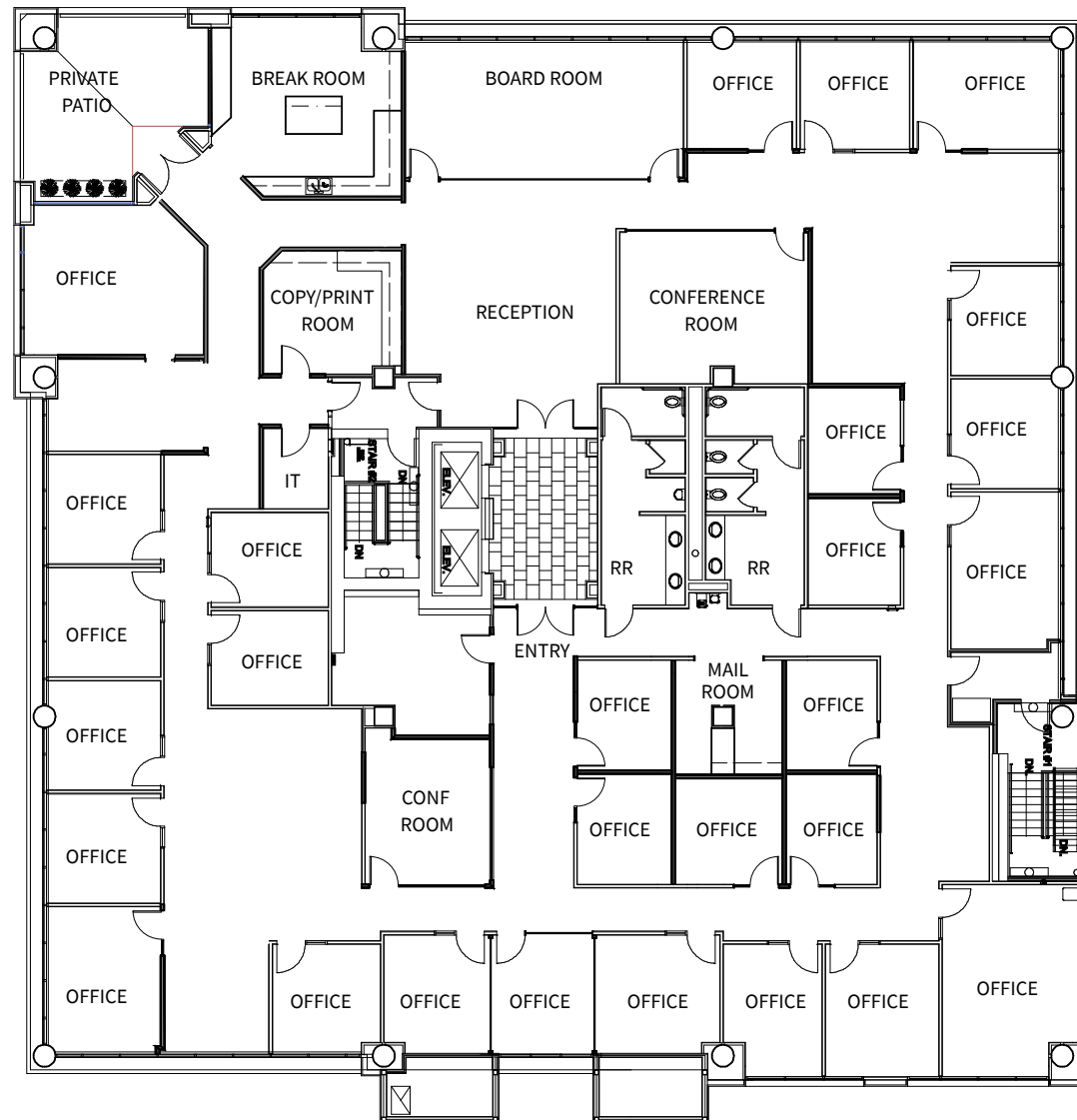
Suite 300
4,990 SF

Suite 350
6,248 SF

3333 N. Torrey Pines Court | **Fourth floor**
Suite 400 - 13,487SF | available October 2026

- 28 private offices
- Large board room
- 2 conference rooms
- Huddle rooms
- Mail room
- IT room
- Production room
- Private patio directly next to large break-area with unmatched ocean views
- Building top signage available

↑ West

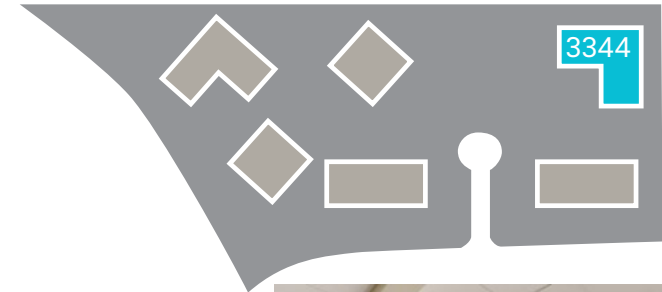




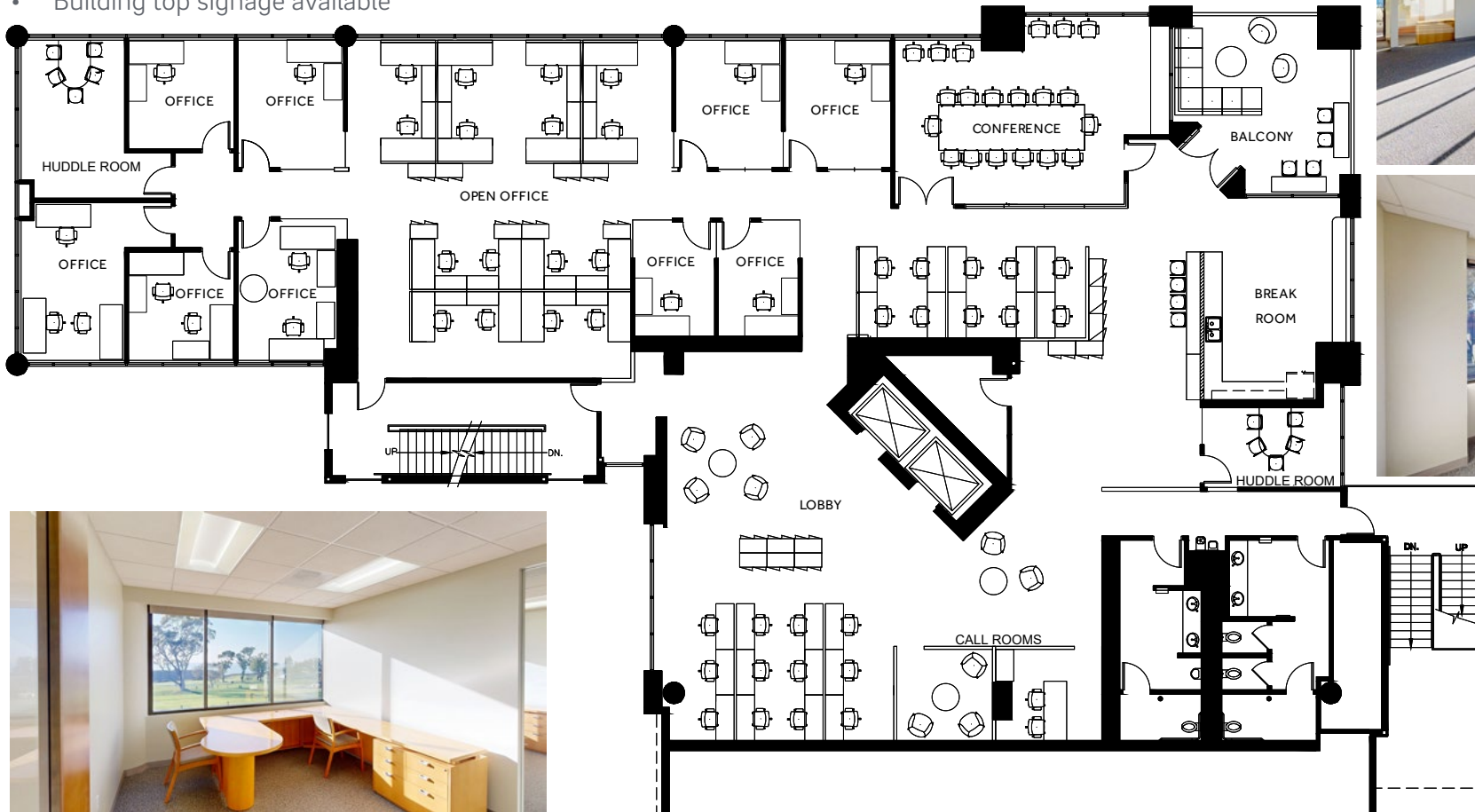
3344 N. Torrey Pines Court | **First floor**

Suite 100 - 9,090 SF | available w/60 days notice

↑ West



- 5 conference/huddle rooms
- 7 private offices
- 38 workstations
- "Zoom" studio
- Break room & kitchenette
- Ocean views
- Private balcony
- Private elevator entry to lobby
- Building top signage available



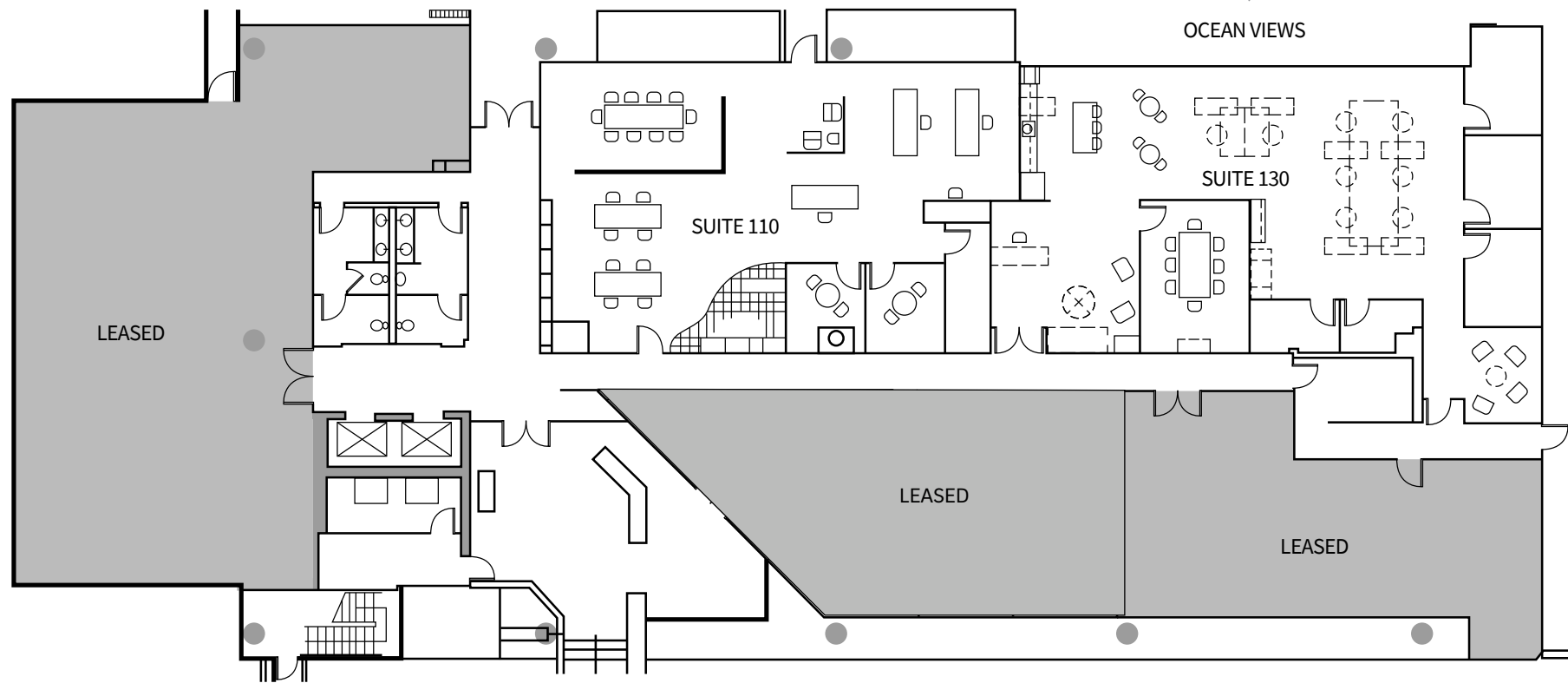
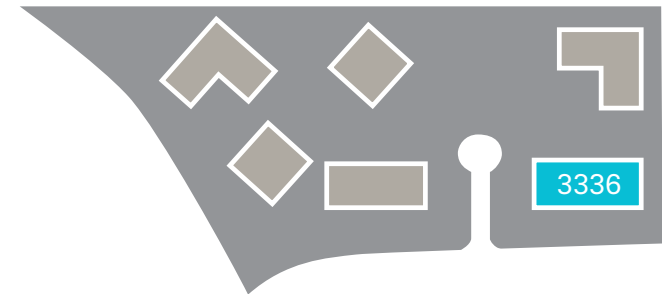


3366 N. Torrey Pines Court | **First floor**

Suite 110 - 2,400 SF | available now

Suite 130 - 3,100 SF | available now

↑ West



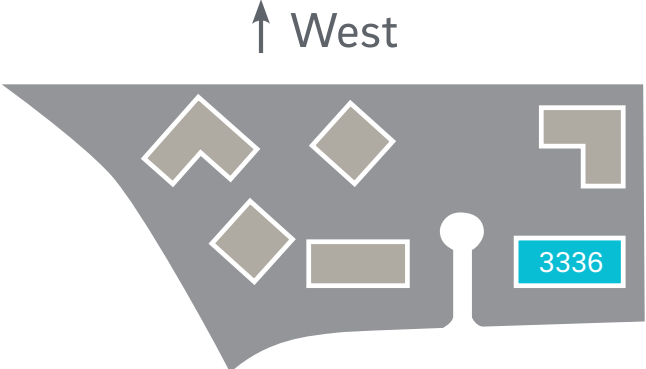
Suite 110 - 2,400 SF

- Creative space w/exposed ceilings
- Partial ocean views
- 2 meeting rooms
- Conference room
- Open kitchen
- Balance open office

Suite 130 - 3,100 SF

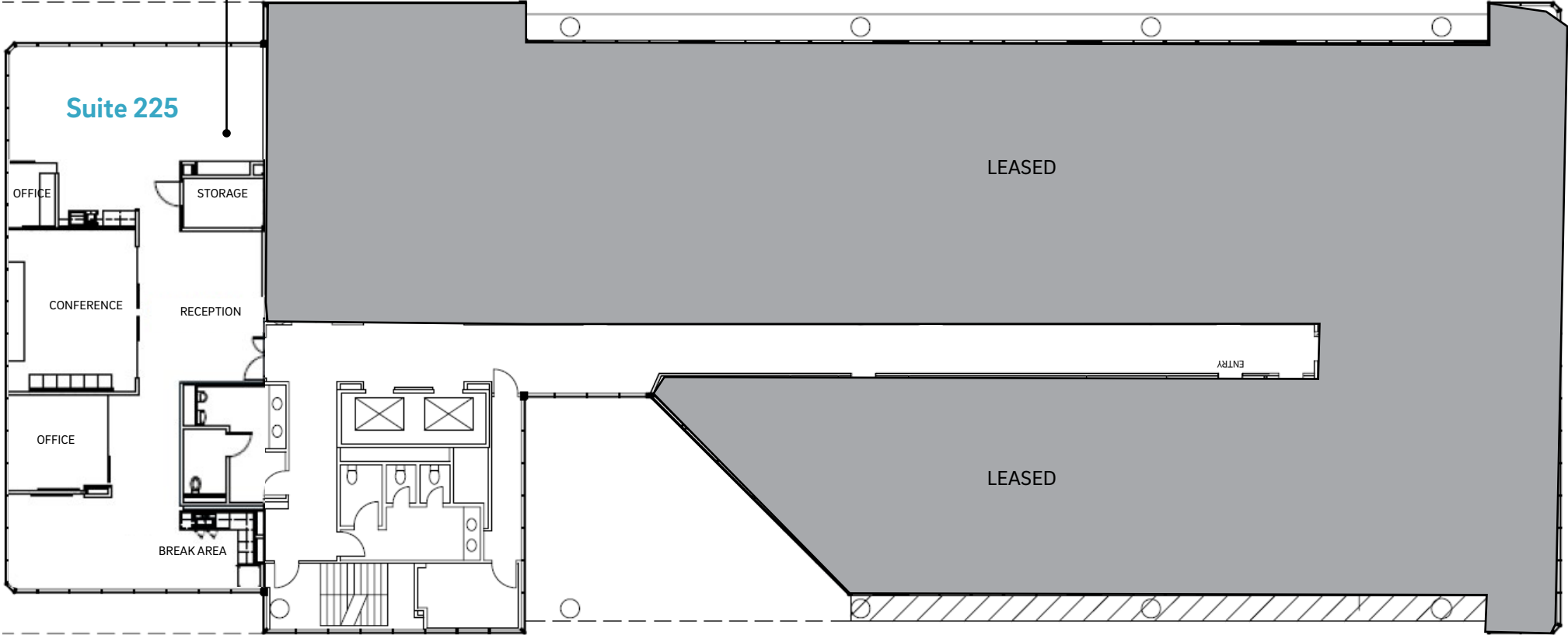
- Creative spec suite w/ocean views
- 4 Offices
- Room for 8 cubicles
- Conference room
- Open kitchen

3366 N. Torrey Pines Court | **Second floor**
Suite 225 - 2,377 SF | available now



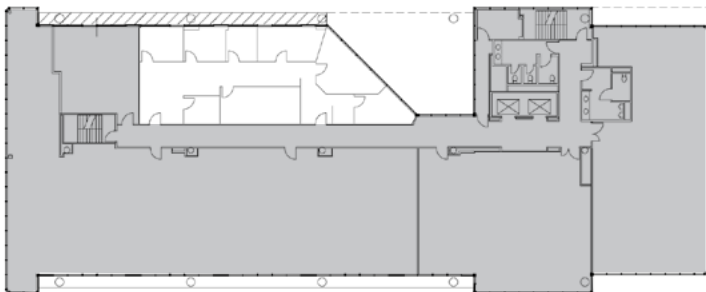
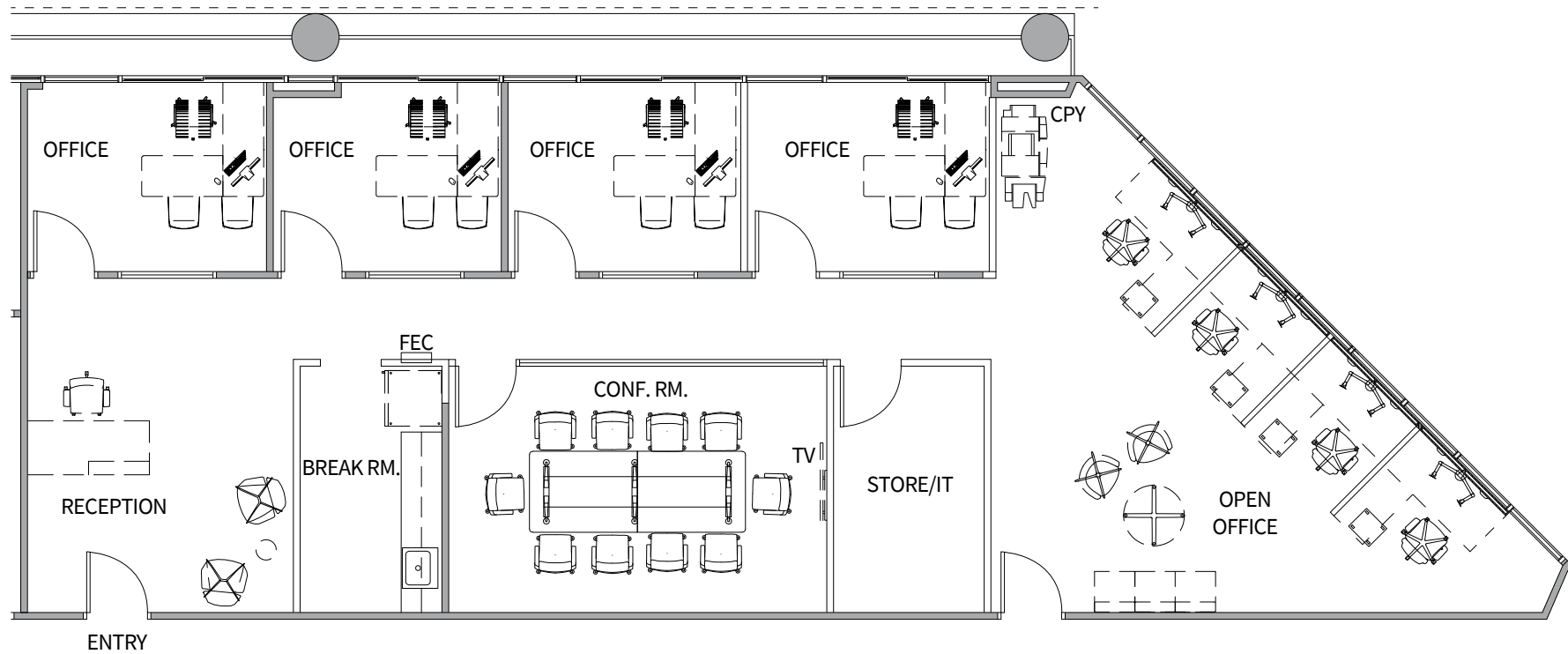
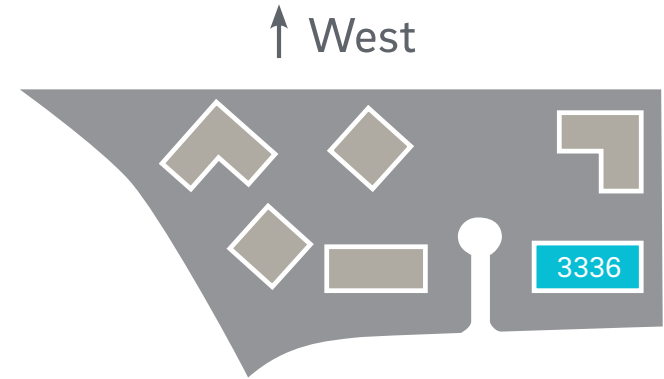
Suite 225 - 2,377 SF

- Exposed ceiling and floor to ceiling window line
- Reception
- 2 private offices
- Conference room
- Break area



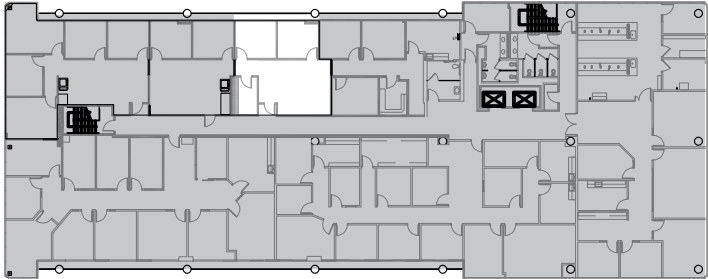
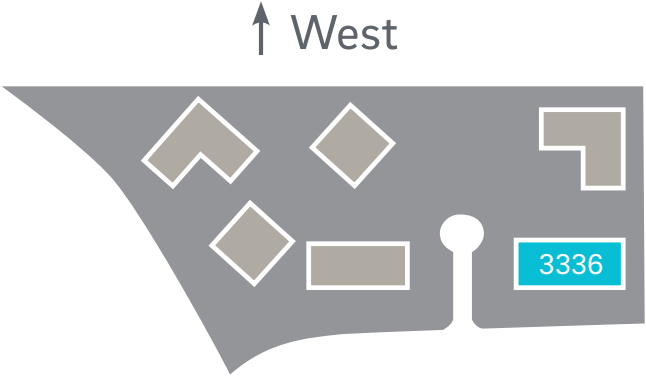
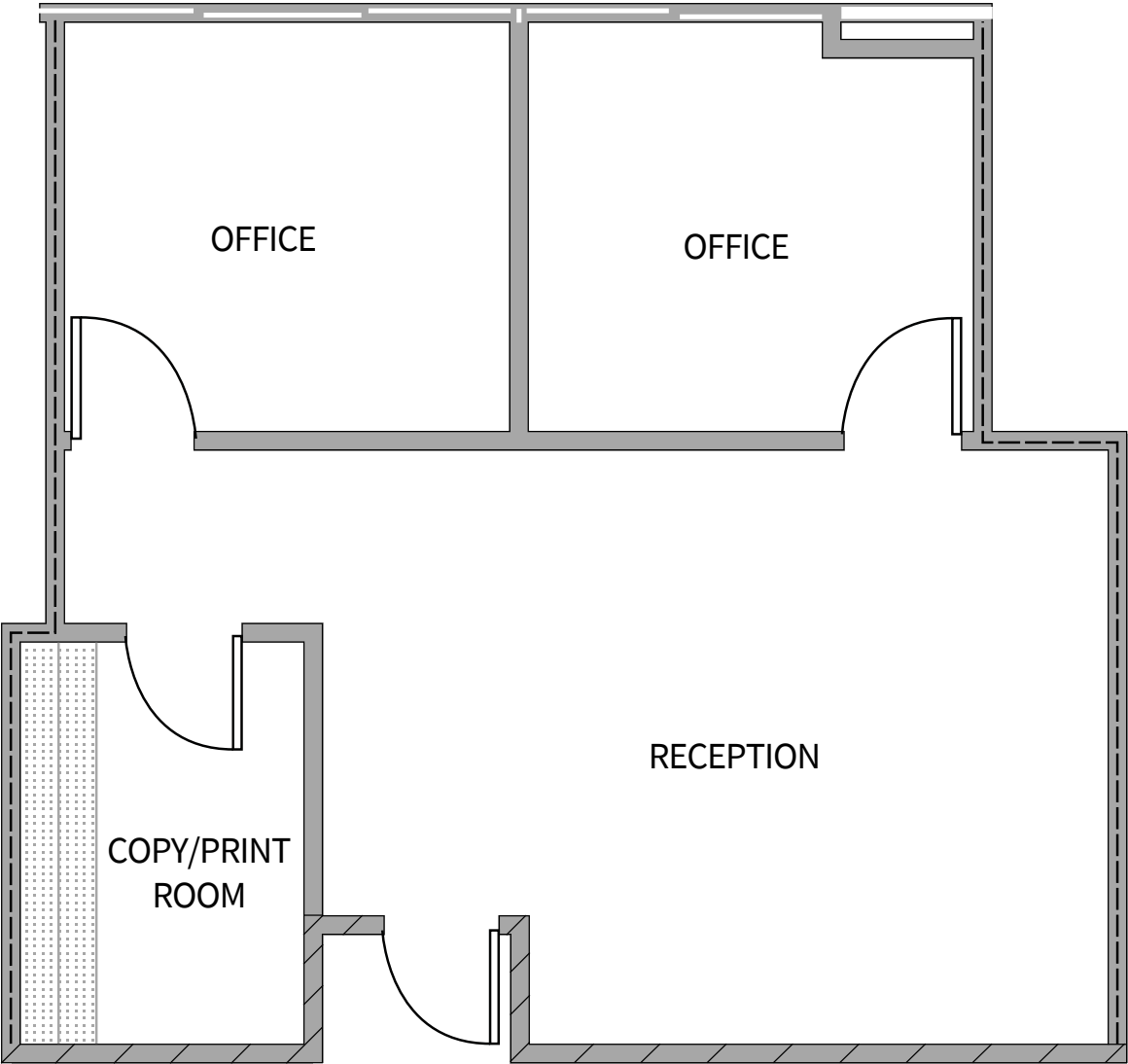
3366 N. Torrey Pines Court | **Second floor** Suite 250 - 2,153 SF | available Q1 2026

- To be Delivered Spec Suite
- Reception
- 4 Offices
- Break room
- Conference room
- Storage/server room
- Open office area



3366 N. Torrey Pines Court | **Third floor**
Suite 318 - 950 SF | available now

- 2 offices
- Copy/print room
- Reception





3377

 Center for Creative Leadership

3377
N. TORREY PINES COURT

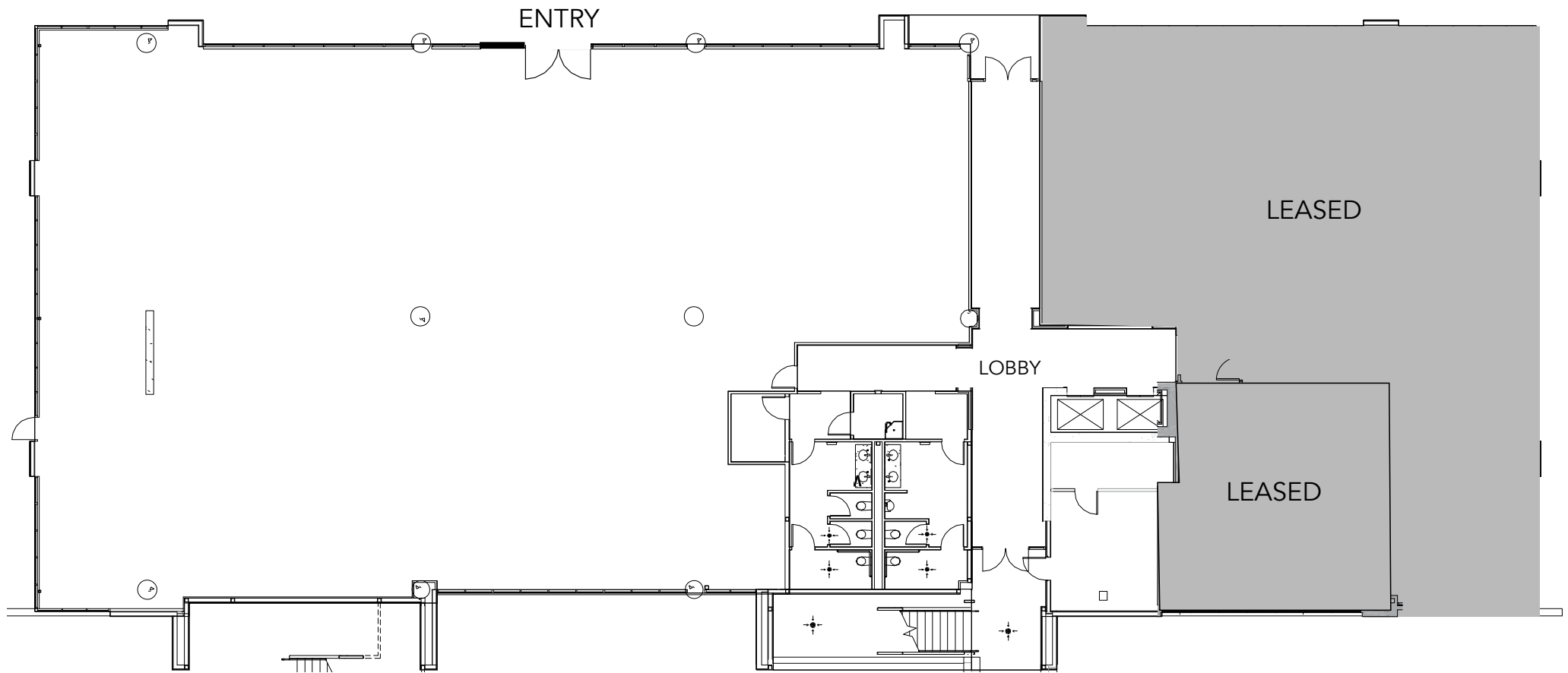
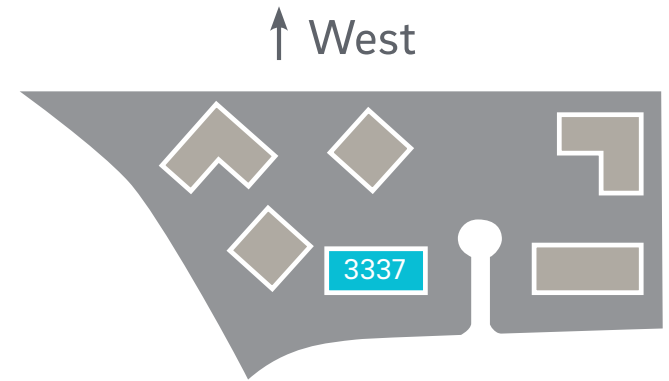
 Center for
Creative Leadership

3377 N. Torrey Pines Court | **First floor**

Suite 150 - 9,095 SF | available now

- Shell Condition - potential creative space
- Direct entry from building exterior
- Ocean views

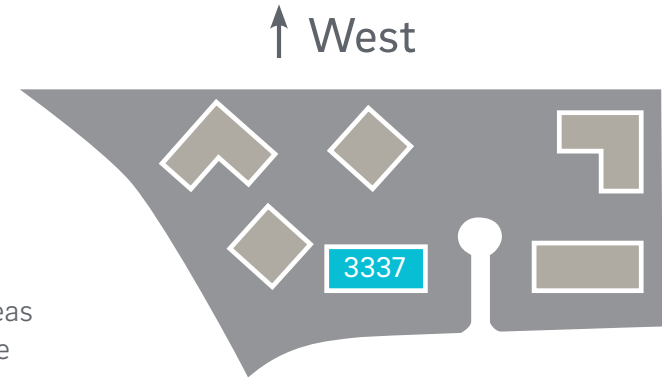
[Take a Virtual Tour - 3377 #150](#)



3377 N. Torrey Pines Court | **Second floor**

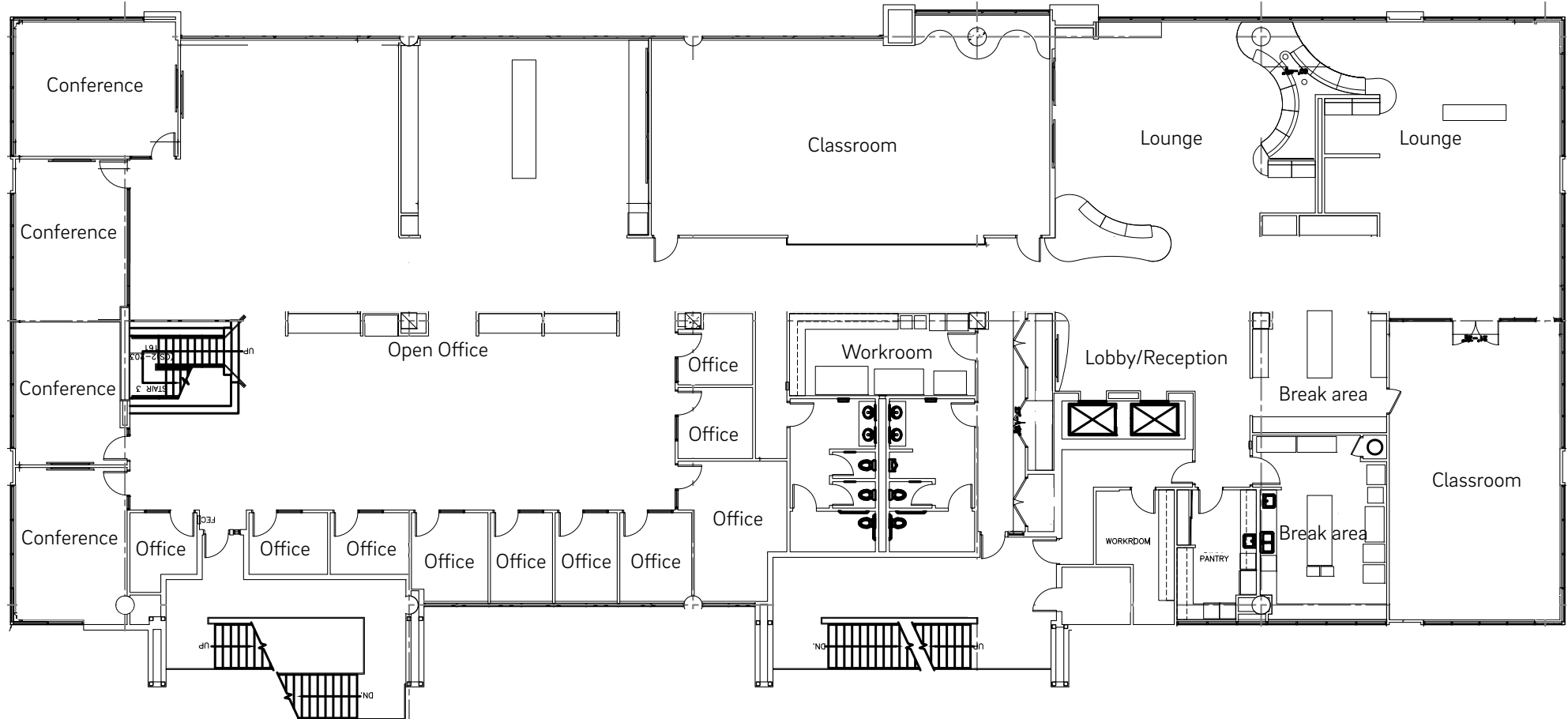
Suite 200 - 15,691 SF | available with 120 day's notice
(suites 200 & 300 contiguous for up to 31,382 sf)

- Lobby/Reception
- 10 private offices
- 2 classrooms/training rooms
- 4 conference rooms
- 2 lounges
- 2 workrooms
- 2 break areas
- Open office
- Restrooms



[Take a Virtual Tour - 3377 #200](#)

Ocean Views



3377 N Torrey Pines Court,
Suite 200 | Photos



3377 N. Torrey Pines Court | **Third floor**

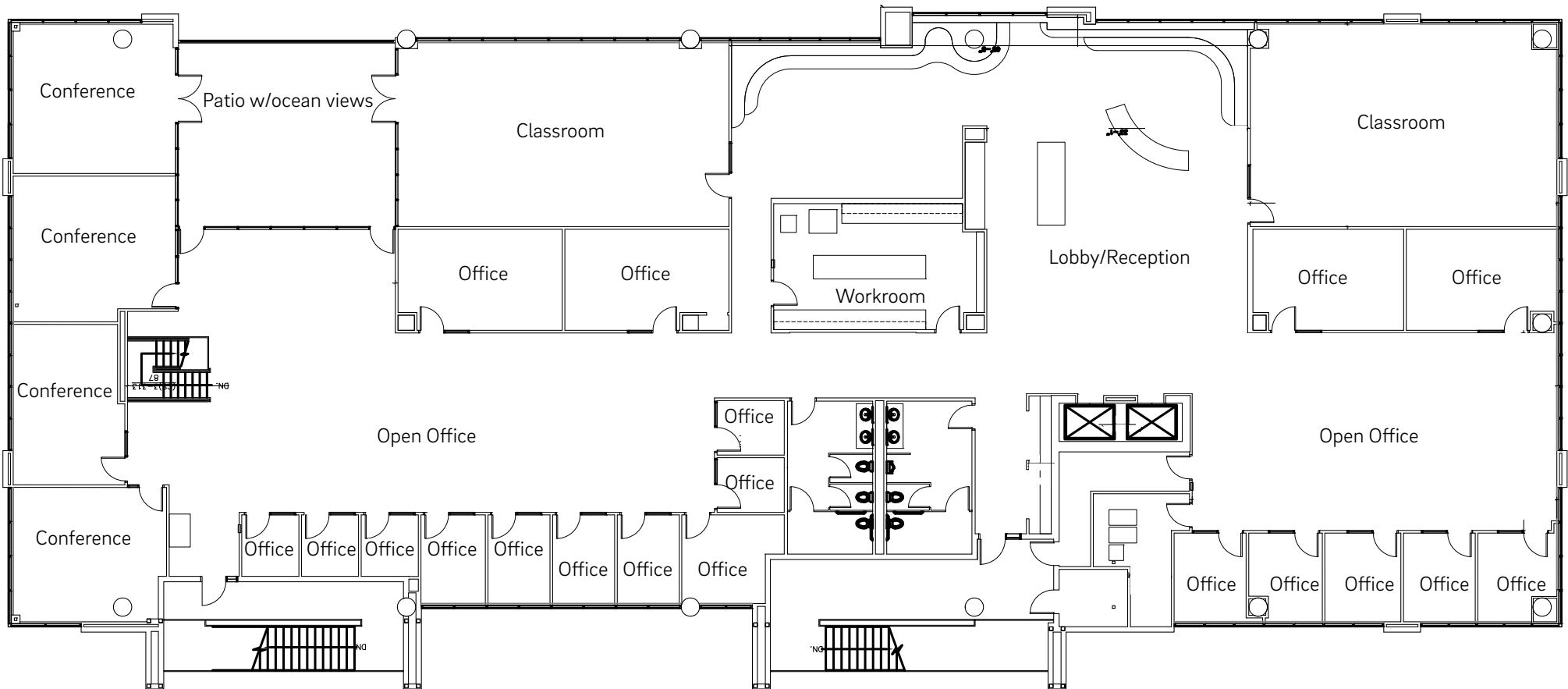
Suite 300 - 15,691 SF | available with 120 day's notice
(suites 200 & 300 contiguous for up to 31,382 sf)

- Lobby/Reception
- 19 private offices
- 2 classrooms/training rooms
- 4 conference rooms
- Workroom
- Open office
- Patio with ocean views
- Restrooms



[Take a Virtual Tour - 3377 #300](#)

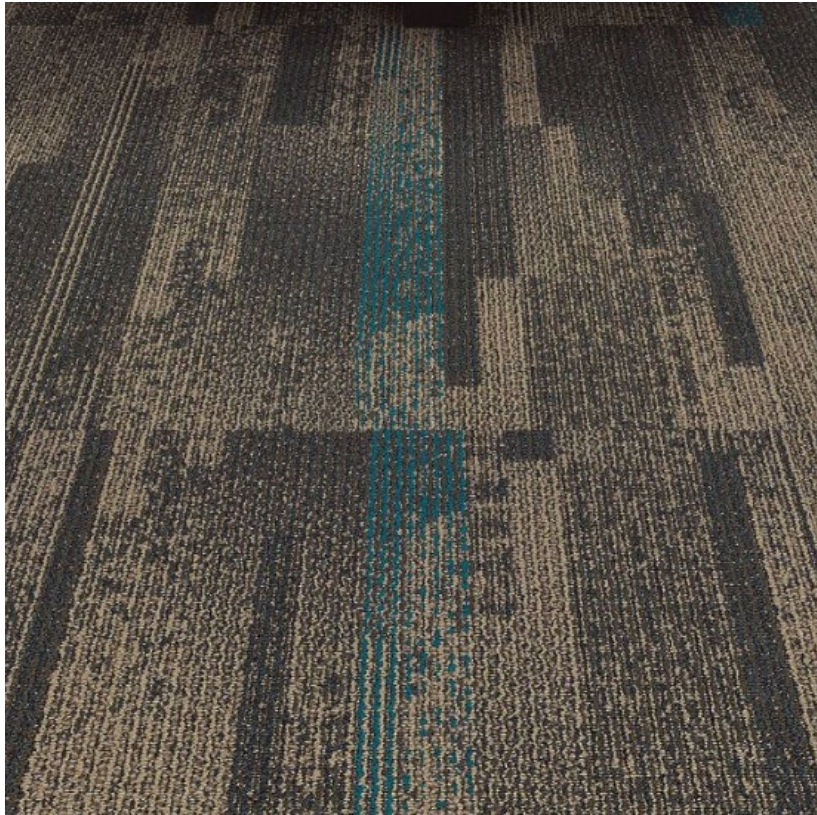
Ocean Views



3377 N Torrey Pines Court,
Suite 300 | Photos



Spec Suite Finishes



CARPET



ENTRY CHANDELIER



ISLAND PENDANT



GENERAL LIGHTING



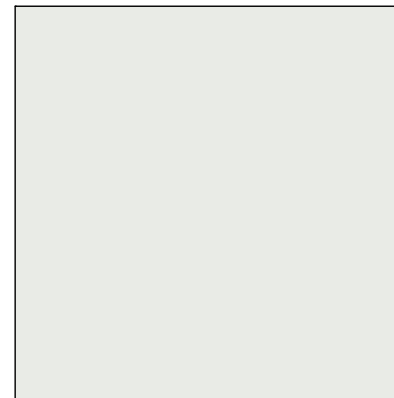
SOLID SURFACE COUNTERTOP



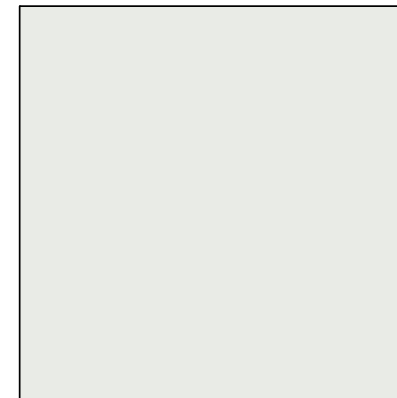
MILLWORK LAMINATE



TILE BACKSPLASH



FIELD PAINT



WALL BASE



Tim Olson
858.410.1253
tim.olson@jll.com
RE lic. #01364117

Greg Moore
858.410.6367
greg.moore@jll.com
RE lic. #02068852