

For sale

Former beverage distribution
facility and warehouse

Sale Price: \$5,250,000

71 Loren Avenue
Chico, CA 95928

Contact Us

Tim O'Rourke
Exec. Managing Director
RE Lic. 01008331

Mike Luca, SIOR
Sr. Managing Director
RE Lic. 01447904

RJ Jimenez
Associate
RE Lic. 02248675



Zoned HI - Heavy Industrial (Butte County)

71 Loren Avenue / Chico, CA

Property features

Building total SF: ±64,951

- Existing racking available
- Fluorescent lighting throughout
- Grade-level doors: 8 total - (6) ±14' x 16' & (2) ±12' x 16'
- Dock doors: 4 total
- Power Panel: 2 power panels 400A each
(to be independently verified by buyer prior to entering into a binding agreement)
- Building connected to septic system and private well water

Area A - ±5,420 SF office & ±15,409 SF warehouse

- ±42'L x 60'W x 15'H walk-in cooler in warehouse
- Warehouse clear height: ±18'
- Grade-level doors: (1) ±14' x 16'
- Dock doors: 2 with levelers
- Concrete vault in office area

Area B - ±30,279 SF warehouse

- Clear height: ±22' - 25'
- Column spacing: ±48' x 70'
- Grade-level doors: (5) ±14' x 16' (4 with drive-through capability)
- Dock doors: 2
- Cooling capability down to ±70 degrees

Area C - ±12,043 SF warehouse

- Clear height: ±20' - 22'
- Has cooling capabilities

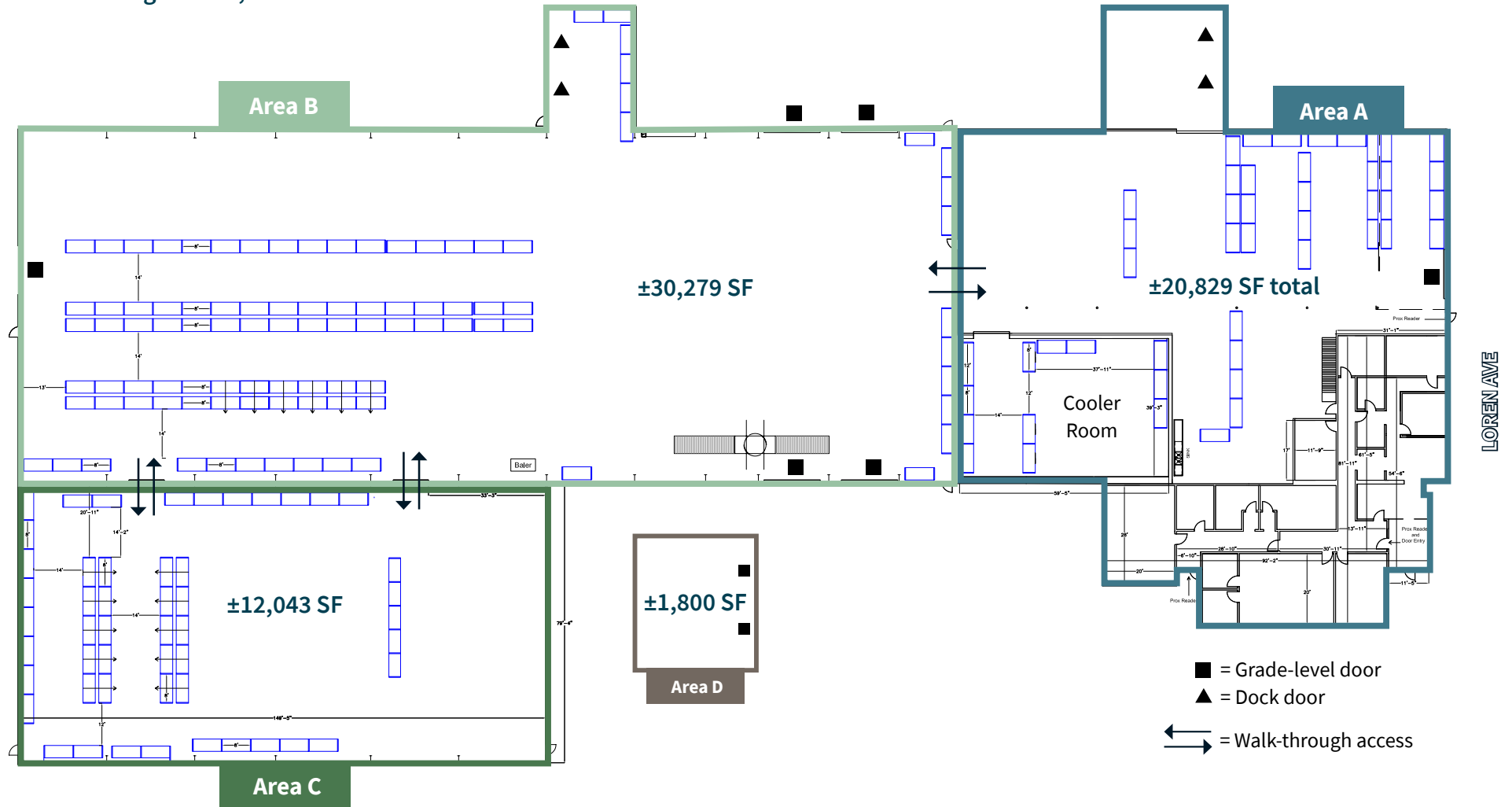
Area D - ±1,800 SF maintenance shop

- (2) ±12' x 16' bay doors



Site plan

Total Building SF: ±64,951



LOREN AVE



MAP NOT TO SCALE

Exterior photos



West side of areas B, C & D



Area B - back view of loading docks



Area C - northwest side



Area A - southeast docks



Area A - southeast view

Interior photos



Area B - east side of warehouse



Area B - north side of warehouse



Area A - cooler room



Area B - south side of warehouse



Area B - north side of warehouse

Allowed uses (partial list)

Zoned HI - Heavy Industrial (Butte County)

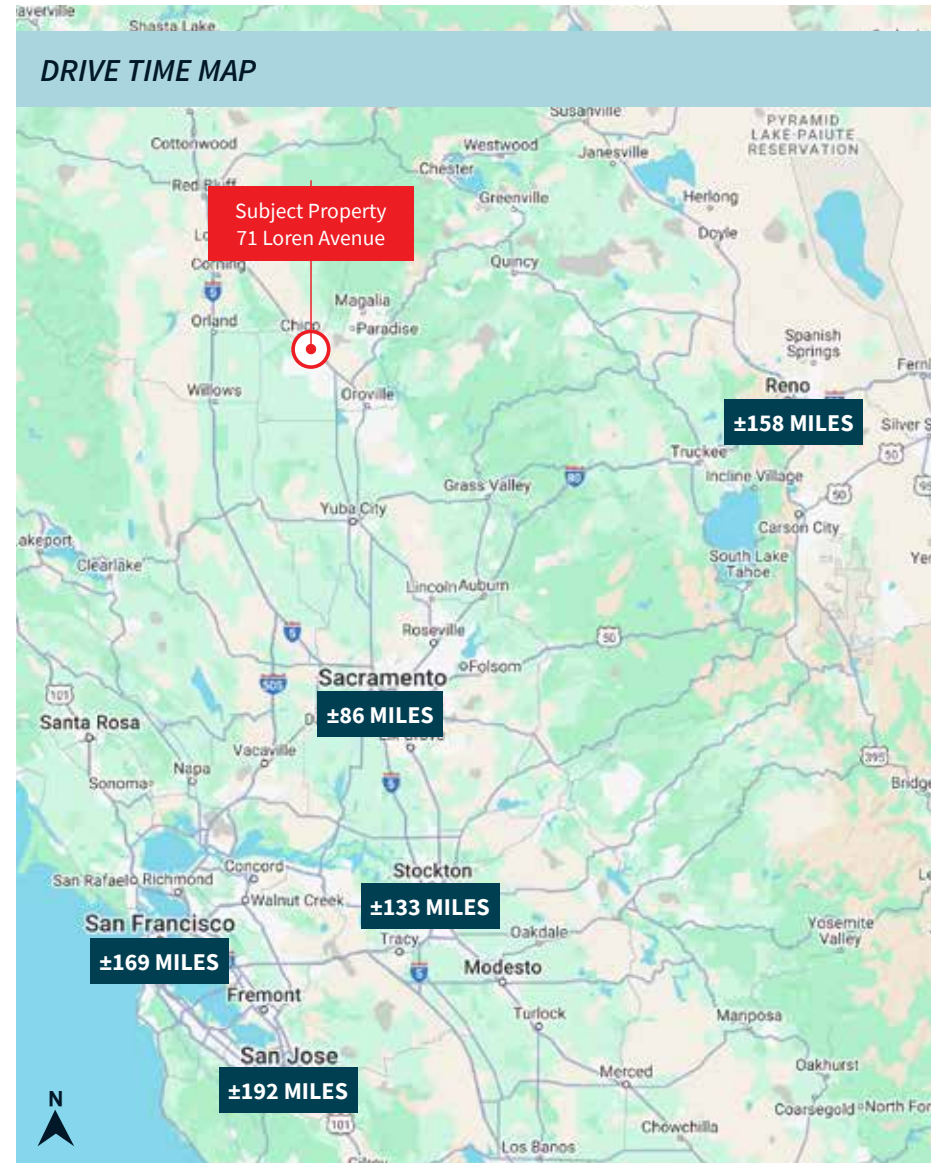
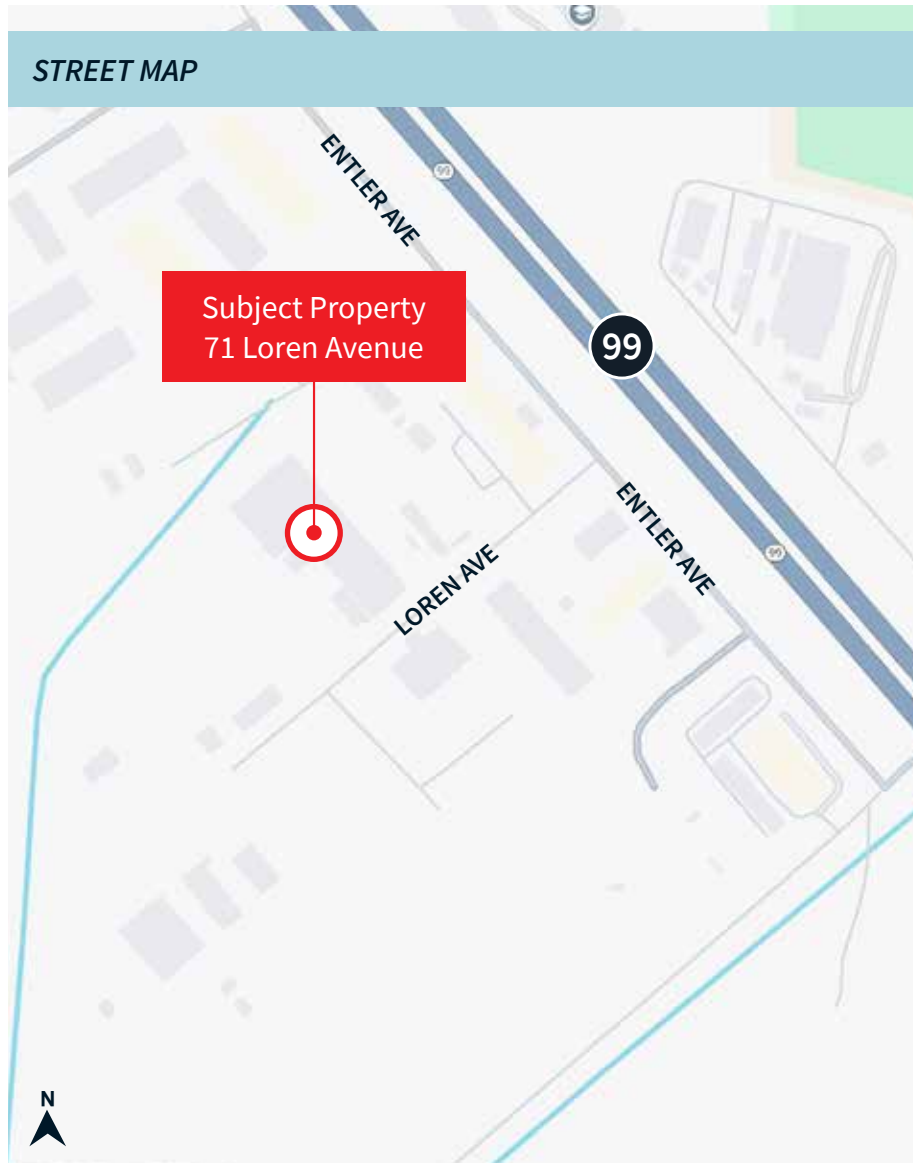


For more information, view or download the full Butte County Municipal Code

Commercial Uses	Permitted or CUP	Industrial Uses	Permitted or CUP
Assessment facility	Permitted	Composting facilities	Permitted
Construction, maintenance and repair services	Permitted	Manufacturing, general	Permitted
Equipment sales and rentals	Permitted	Manufacturing, light	Permitted
Firewood storage, processing and off-site sales, large	Permitted	Manufacturing, heavy	CUP
Heavy equipment storage	Permitted	Research and development	Permitted
Vehicle sales & rental	Permitted	Warehousing, wholesaling and distribution	Permitted
Vehicle service, repair and maintenance	Permitted	Freight and truck terminals and yards	Permitted

NOTE: This partial list is provided as a courtesy only, and is any potential occupant's responsibility to confirm any intended use for the property with the Butte County Development Services Department at (530) 552-3700.

Location Maps



MAP NOT TO SCALE

For sale

Former beverage distribution facility and warehouse

71 Loren Avenue
Chico, CA 95928

Contact Us

Tim O'Rourke

Executive Managing Director

Tim.ORourke@jll.com

+1 213 2396231

Lic. 01008331

Mike Luca, SIOR

Senior Managing Director

Mike.Luca@jll.com

+1 916 2014 0466

Lic. 01447904

RJ Jimenez

Associate

RJ.Jimenez@jll.com

+1 940 597 9341

RE Lic. 02248675

Jones Lang LaSalle Brokerage, Inc.

CA Real Estate License #01856260

Although information has been obtained from sources deemed reliable, JLL does not make any guarantees, warranties or representations, express or implied, as to the completeness or accuracy as to the information contained herein. Any projections, opinions, assumptions or estimates used are for example only. There may be differences between projected and actual results, and those differences may be material. JLL does not accept any liability for any loss or damage suffered by any party @resulting from reliance on this information If the recipient of this information has signed a confidentiality agreement with JLL regarding this matter, this information is subject to the terms of that agreement. ©2025. Jones Lang LaSalle Brokerage Inc. All rights reserved. JMYERS LorenAve_71@Marketing>Brochure