



Bay Centre Food Terrace

1150 Douglas St, Victoria, BC

Property overview

Opportunity

Position your business in this high profile location situated on level 4 of the Bay Centre. Align your brand with a complimentary mix of international, national and local tenants providing proven traffic, waiting to discover your brand. The food terrace includes access to a 450-seat food terrace rich with natural light from floor to ceiling windows, a 120-seat outdoor heated patio with skyline views, state-of-the-art washrooms and 24-hour security.

Location

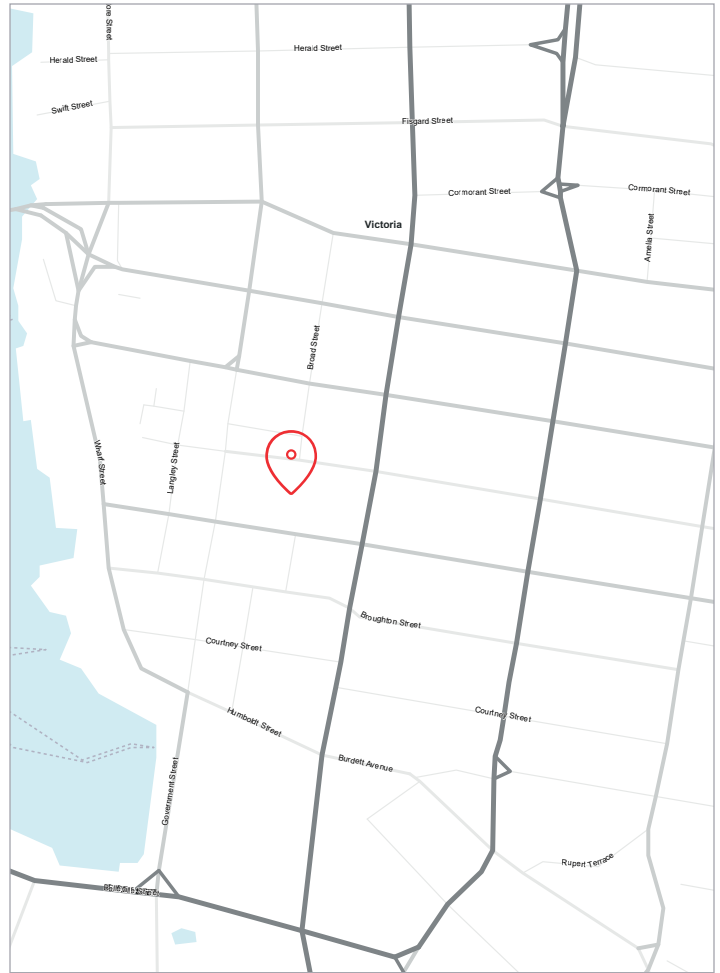
Located in the centre of the City of Victoria's shopping, business and tourism districts at 1150 Douglas Street, Victoria, BC, the Bay Centre's downtown location offers a favourable demographic composition with its balanced customer base combining daytime office workers, downtown residents and the city's 4 million annual tourists.

Zoning

C-8 (community commercial zone)

Net asking rate

Please contact listing agent



\$1,130 PSF

Sales productivity



465

Interior seats



120

Heated outdoor patio seats



80

Shops and services



24/7

Security program



5 Million

Shoppers per year



Anchored by:

**Winners, Sport Chek
& Service Canada**



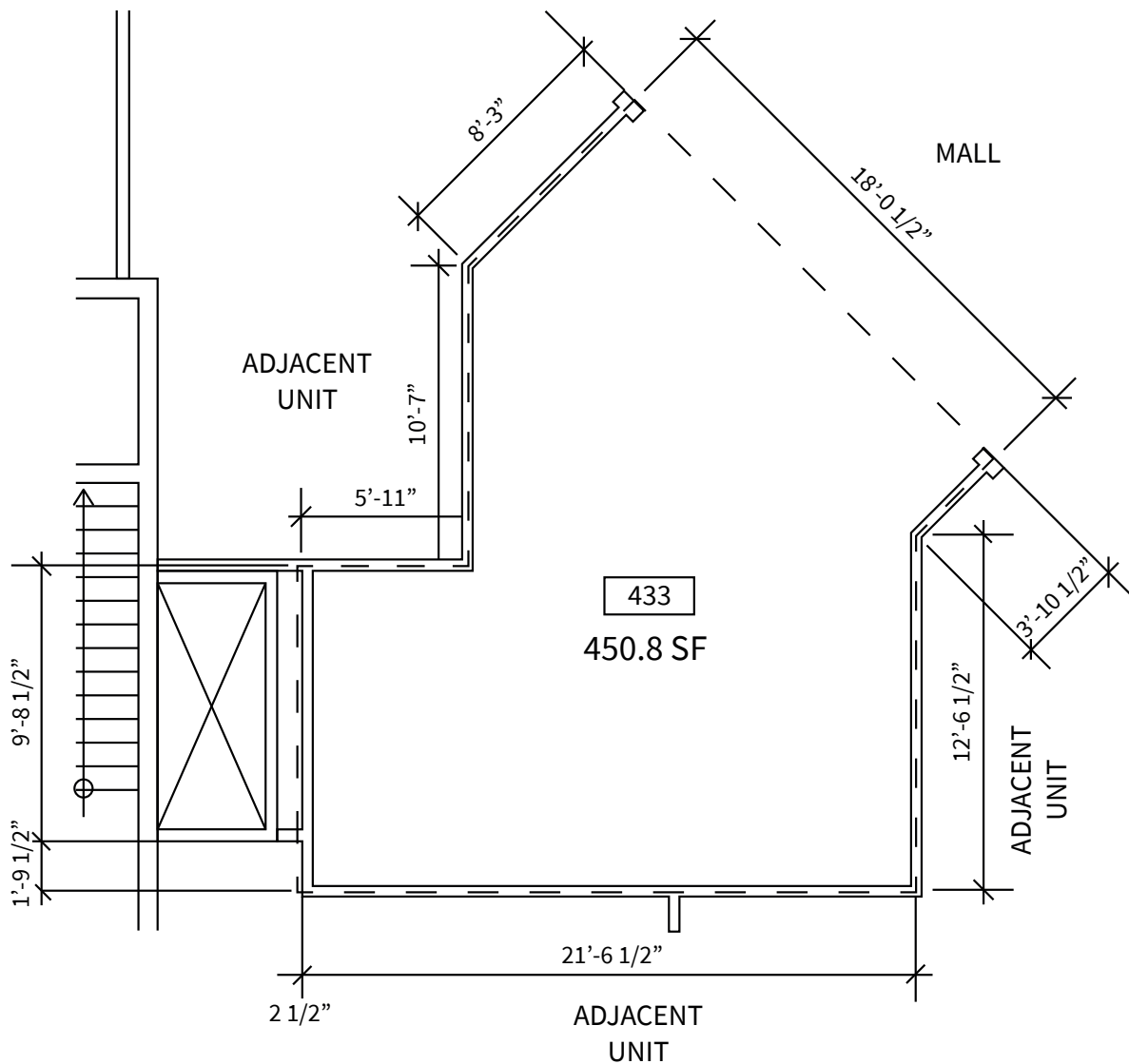
138,671

Downtown Victoria daytime population increases by 34%. Daytime population increases by 85% within a 15-min walk radius including over 57,000 people at work

Available space

Food terrace opportunity

Unit 433 | 434 SF

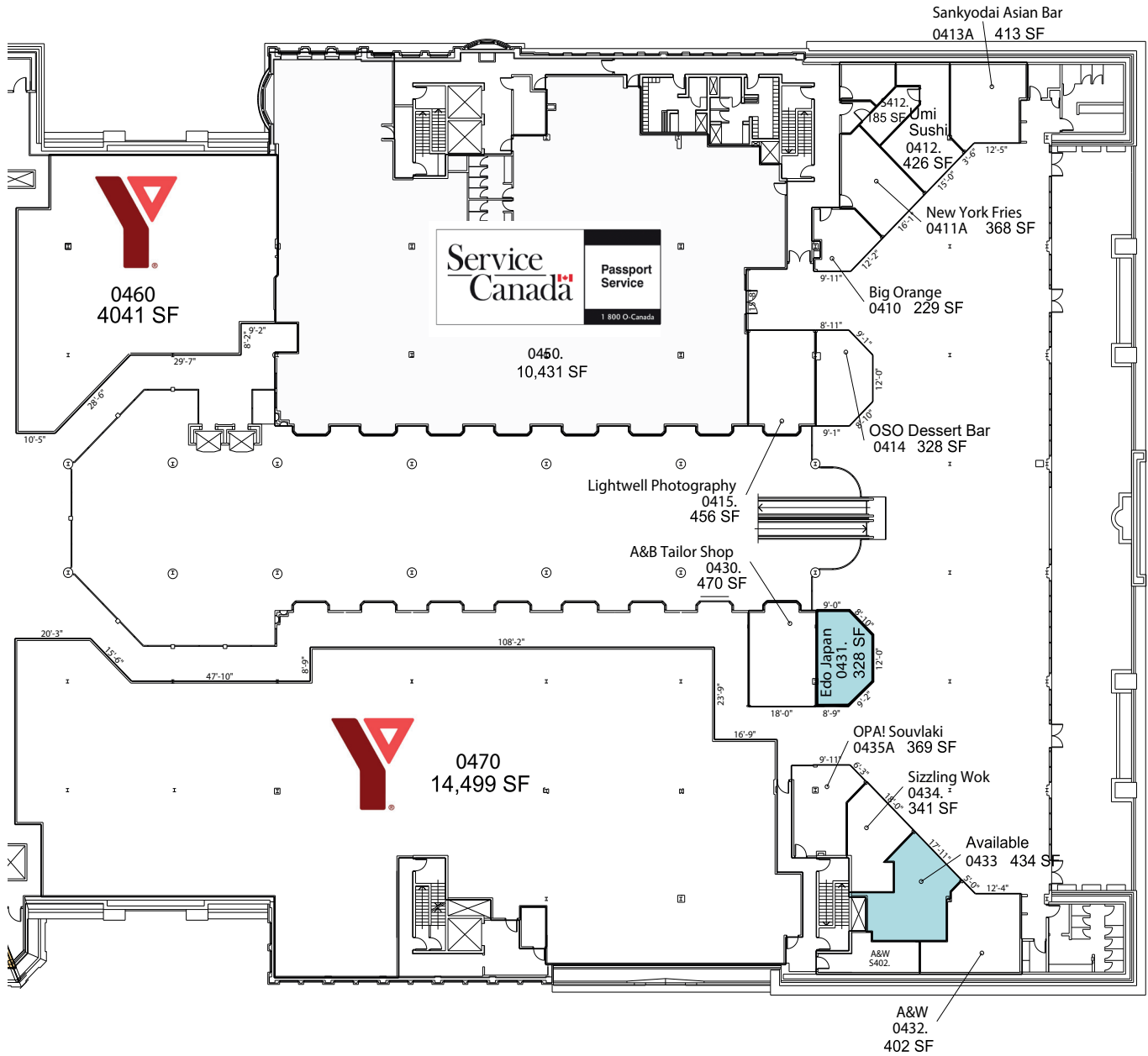


Overview

- Empty space ready to build to suit. Includes some tenant improvements
- High traffic area located next to the food terrace's highest performing eatery

Bay Centre - Floor 4 Food Terrace

SITE PLAN



Ashley Roberts

Director Retail Leasing, Western Canada
403-616-7247 | Ash.Roberts@jll.com