



For Lease

Wesmount Campus

4954 and 5010 Richard Road SW
Calgary, AB

Available retail spaces:

1,645 SF, and 2,457 SF

Close proximity to Mount Royal University, Flames
Community Arenas, North Glenmore Park, Lakeview,
and Marda Loop



Property overview

- Modern inner city corporate campus containing 780,000 SF of Class A office buildings with tremendous potential for amenity retail uses
- Close proximity to Mount Royal University, Flames Community Arenas, North Glenmore Park, Lakeview, and Marda Loop
- Along Richard Road and Mount Royal Gate near the Glenmore Trail/Crowchild Trail interchange
- Convenient access from multiple access points, excellent directional signage and convenient visitor parking areas provide both onsite and visitor customers convenient access to existing and future retail operators
- Space plan prepared specifically for coffee shop operation, including equipment layout and customer flow design

Westmount Corporate Campus Certifications & Awards

4954 Richard Road SW

- BOMA BEST Gold Certification
- Fitwel Viral Response Certification
- Energy Star Certification

5010 Richard Road SW

- BOMA BEST Silver Certification
- Fitwel Viral Response Certification



Property details

Municipal address	4954 & 5010 Richard Road SW Calgary, AB
Available space	4954 - Unit 115: 2,457 SF 5010 - Unit 110: 1,645 SF
Lease rate (PSF)	Market
Additional rent (PSF)	4954 Richard Road SW Additional Rent: \$20.40 (Est. 2026) 5010 Richard Road SW Additional Rent: \$25.63 (Est. 2026)
Available	Immediate
Zoning	DC
Major Tenants	4954 Richard Road SW Pandell, BMO Nesbitt Burns 5010 Richard Road SW Surrideo Orthodontics, Slokker Homes, Infinity Pediatrics
Other retailers	5010 - Freshii





Main floor leasing opportunity



Prime location suitable for Office or Retail

4954 - Unit 115 Specs

Size	2,457 SF
Availability	Immediate
Entrance	Entrance to main floor lobby
Power	225A 120/208V 3ph 42Ccts
Enhaust and Venting	HVAC: 5 VAVs with zone control, no exhaust
Plumbing and Water	Domestic cold water; dedicated hot water tank with leak prevention system; under sink sump pump

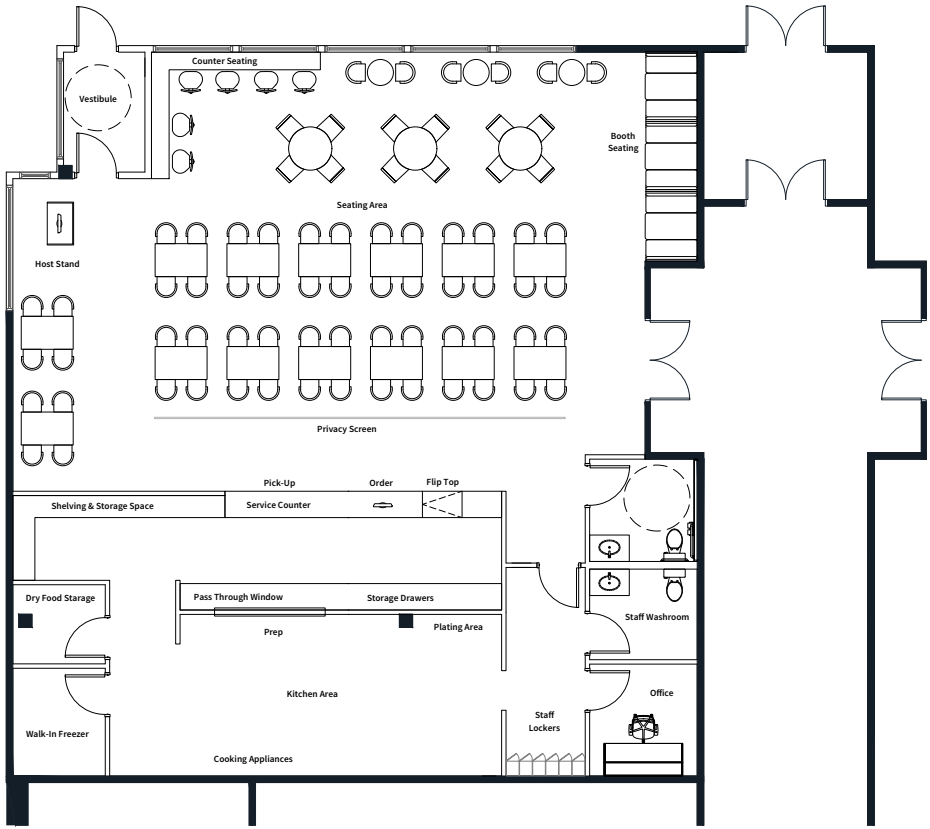
Preferred uses

- Coffee
- Quick service restaurant

Available space

4954 Richard Road SW
Unit 115 | 2,457 SF

Test Fit: Restaurant plan for Unit 115

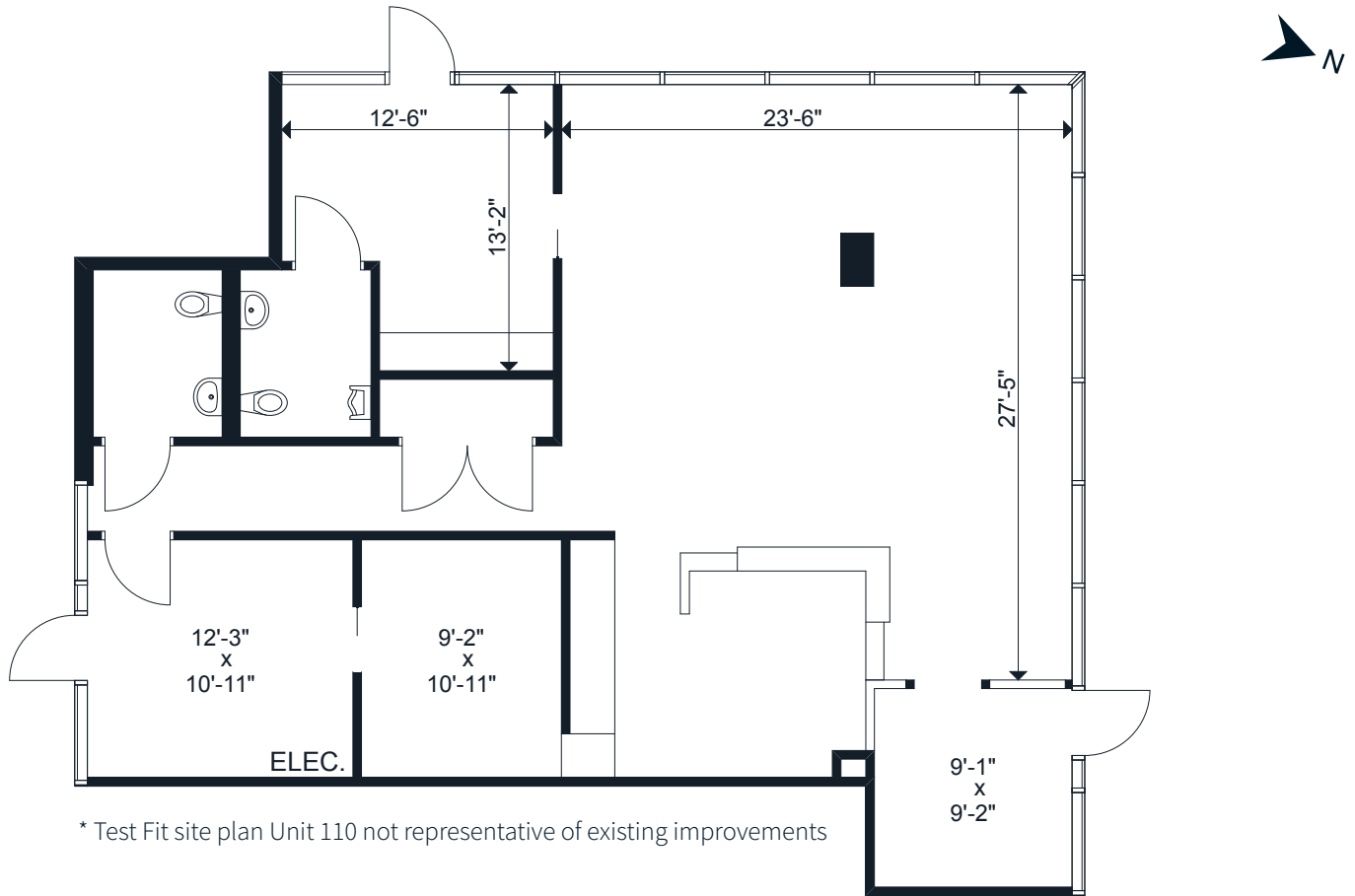


* Test Fit site plan Unit 115 not representative of existing improvements





Main floor leasing opportunity



Prime location suitable for Office or Retail

5010 - Unit 110 Specs

Size	1,645 SF
Availability	Immediate
Entrance	Exterior entrances at front and rear of suite
Power	225A 120/208V 3ph 60Ccts
Enhaust and Venting	HVAC: 5 VAVs with zone control, washroom exhaust fans
Plumbing and Water	Domestic cold water; dedicated hot water tank; 2 washrooms

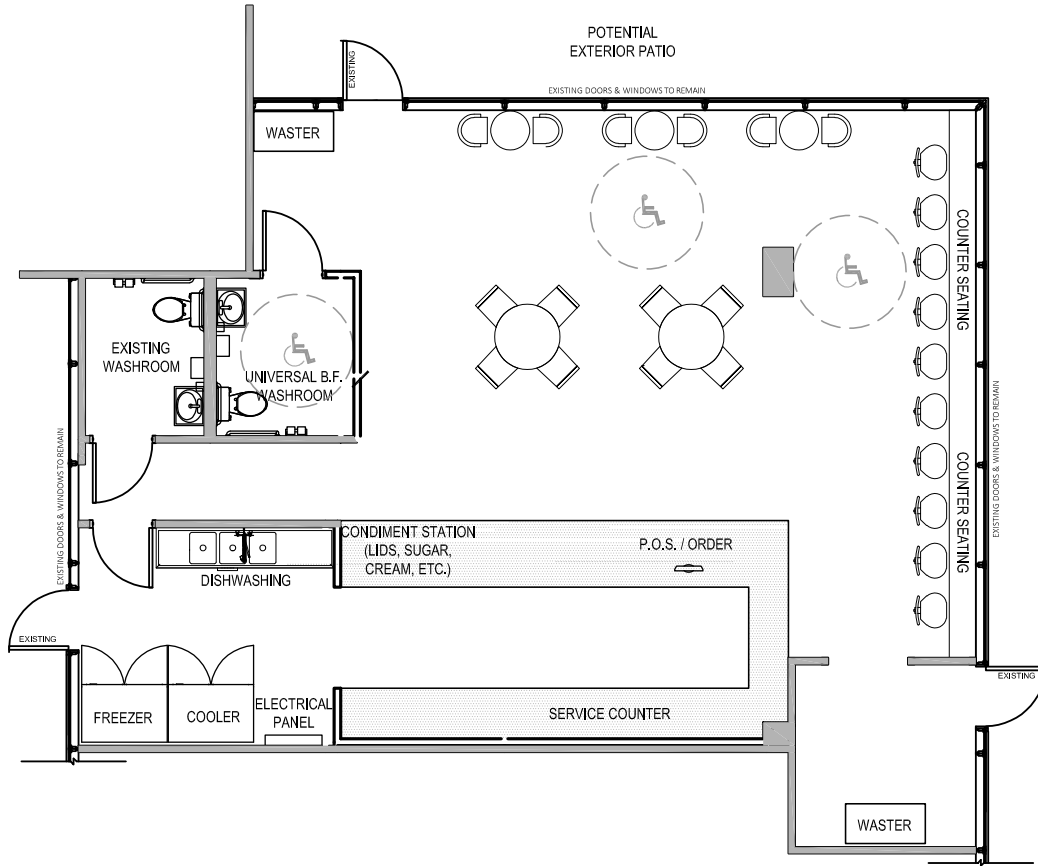
Preferred uses

- Coffee
- Quick service restaurant





Available space

5010 Richard Road SW
Unit 110 | 1,645 SF

Test Fit: Coffee shop plan for Unit 110



Area demographics

	1 km	3 km	5 km
 Population	6,843	60,718	180,895
 Households	2,821	25,060	80,183
 Avg. household income	131,655	159,397	150,830
 Median age	39	39	39





For more information, please contact:

Ron Odagaki

Associate Vice President

(403) 456-3245

ron.odagaki@jll.com

Lauren Yanick

Associate

(403) 456-3136

lauren.yanick@jll.com

JLL Calgary Retail

Bankers Hall East

855 2 St SW #3900

Calgary, Alberta T2P 4K7

(403) 456-2233

Although information has been obtained from sources deemed reliable, JLL does not make any guarantees, warranties or representations, express or implied, as to the completeness or accuracy as to the information contained herein. Any projections, opinions, assumptions or estimates used are for example only. There may be differences between projected and actual results, and those differences may be material. JLL does not accept any liability for any loss or damage suffered by any party resulting from reliance on this information. If the recipient of this information has signed a confidentiality agreement with JLL regarding this matter, this information is subject to the terms of that agreement. ©2026 Jones Lang LaSalle Brokerage, Inc. All rights reserved.