

10 KING EAST

THE HIDDEN GEM OF FINANCIAL DISTRICT

\$1 PSF
Visa Gift Card

BROKER
PROMOTION

for all deals completed before
June 1st 2026*

YEAR 1 NET RENT - PROMOTION
\$5.00 PSF Discount

On Net Rent for terms 3 years or longer**

*Firm and binding. **After year 1, the year 2 rate goes back to the Asking Net Rent. Valid until June 1, 2026.

KATE
RIZZARDO*
Associate
kate.rizzardo@jll.com
+1 (647) 464-5033

Yorkstone

10 KING EAST

THE HIDDEN GEM OF FINANCIAL DISTRICT

Situated at the prime intersection of Yonge and King Street, **10 King Street East** offers a prestigious office address in the vibrant core of downtown Toronto. This recently renovated, 15-story building boasts a total of 59,268 Sq.Ft. of modern, flexible workspace to accommodate businesses of all sizes. With a range of available suites from 1,500 to 4,400 Sq.Ft., 10 King Street East provides the perfect canvas for companies seeking to elevate their presence in the city's thriving commercial landscape.



Property Overview



Total square footage:
59,268 sq. ft.



Available suite sizes:
1,500 - 4,400 sq. ft.



Recent renovations
completed in 2024



Cutting-edge technological
amenities, including high-
speed internet and smart
building features



Efficient, column-free
floor plates with abundant
natural light

10 KING EAST

THE HIDDEN GEM OF FINANCIAL DISTRICT



YEAR 1 NET RENT - PROMOTION
\$5.00 PSF Discount

On Net Rent for terms 3 years or longer

Availabilities

SUITE	SIZE	AVAILABILITY
200	4,371 SF	30 Days
400	4,348 SF	Immediate
800	1,421 SF	July 1st, 2026
801	2,926 SF	Immediate
1100	4,354 SF	30 Days
1401	1,660 SF	Immediate

Additional Rent Est (2026): \$28.92 psf

Asking Net Rent: Please contact Kate

*Utilities included

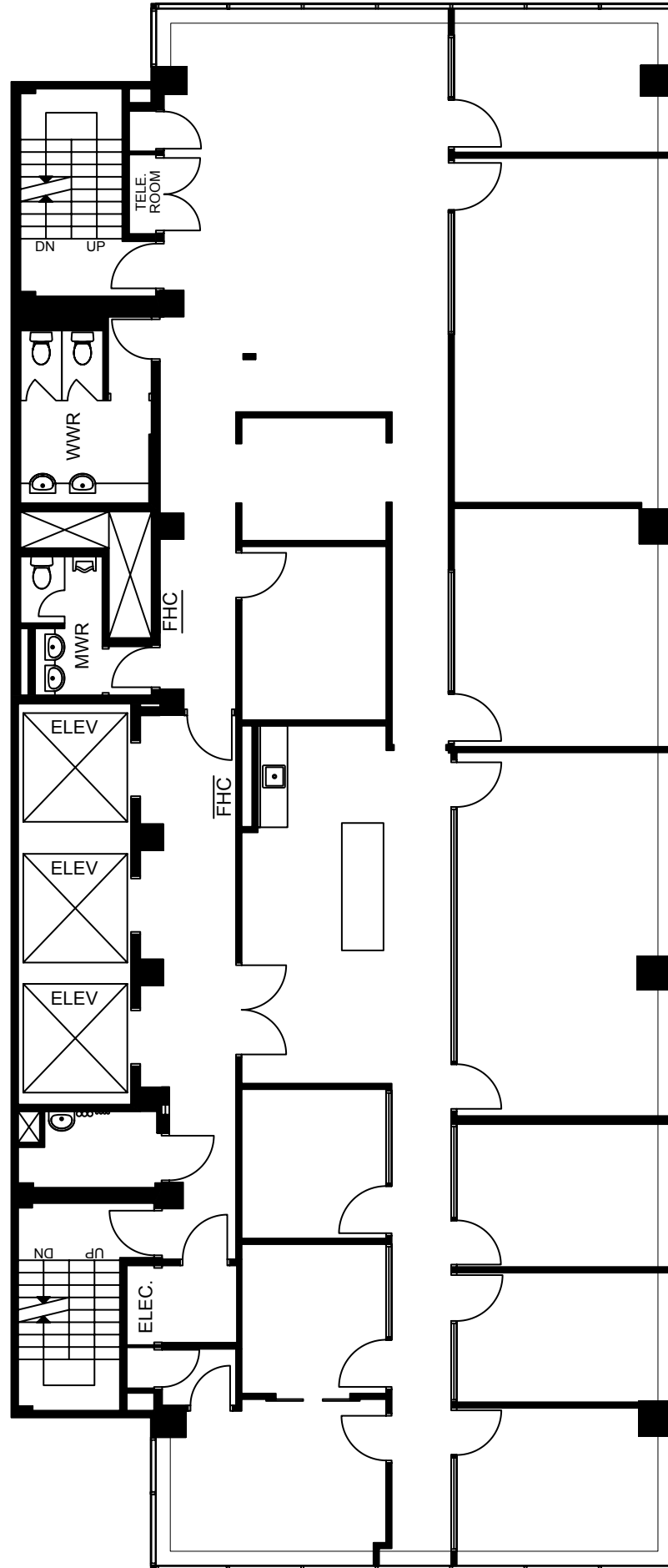
2nd Floor | Suite 200

Size: **4,371 SF**

- Full-floor office
- Large conference room
- Nine private offices
- Spacious open-concept work area
- Copy room/storage
- Kitchen
- Large windows throughout the unit, filled with natural light



Potential Design

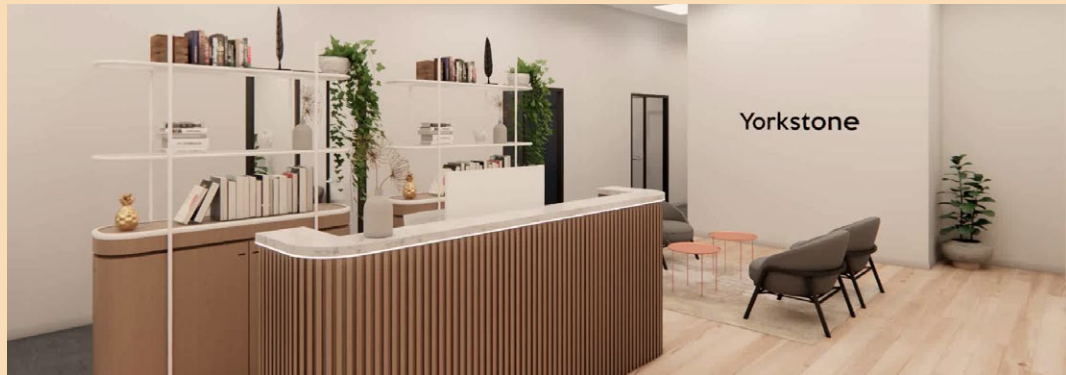




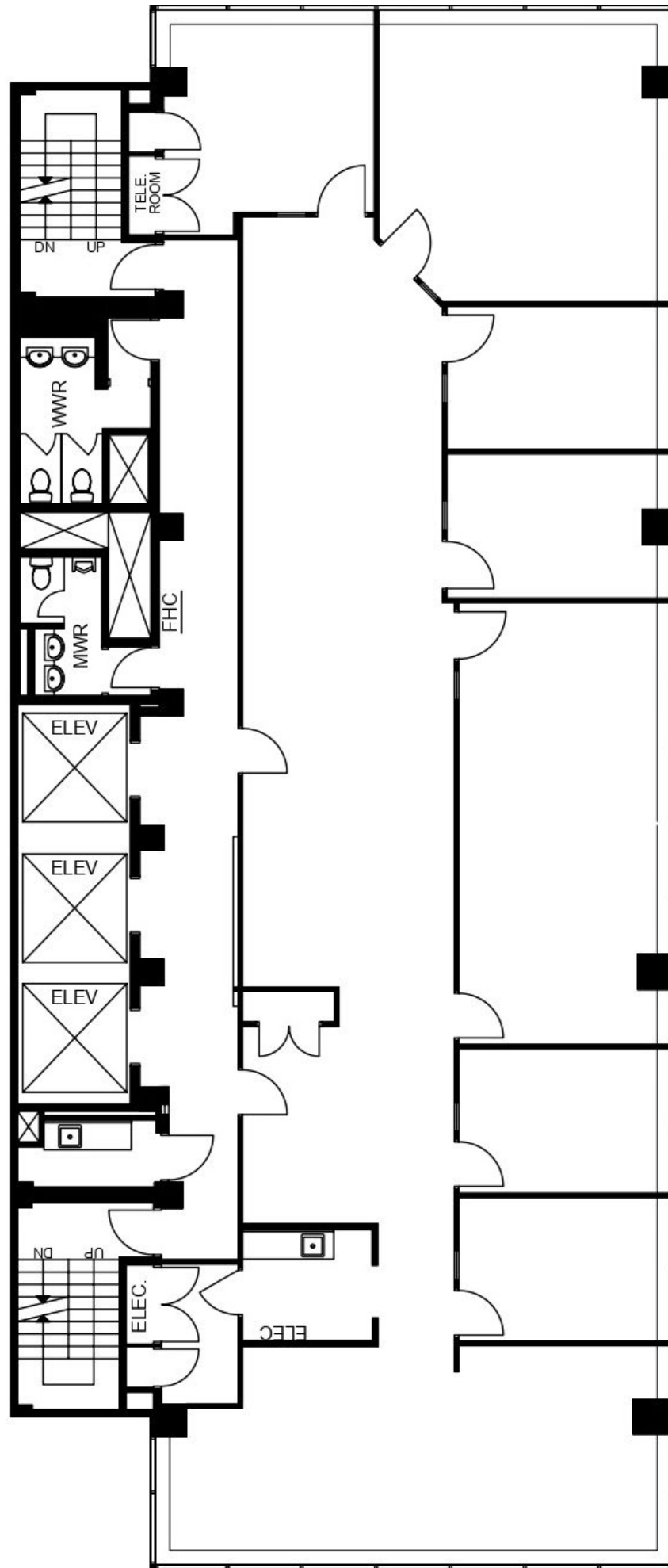
4th Floor | Suite 400

Size: **4,348 SF**

- Full-floor office space
- Potential of dividing into two smaller offices with separate entrances
- Spacious reception area
- 1 Large conference room
- 1 Meeting room/breakout room
- 5 Private Offices
- Two spacious open-concept work areas
- Separate fully-equipped kitchen
- Large windows throughout the unit, filled with natural light
- Furniture available



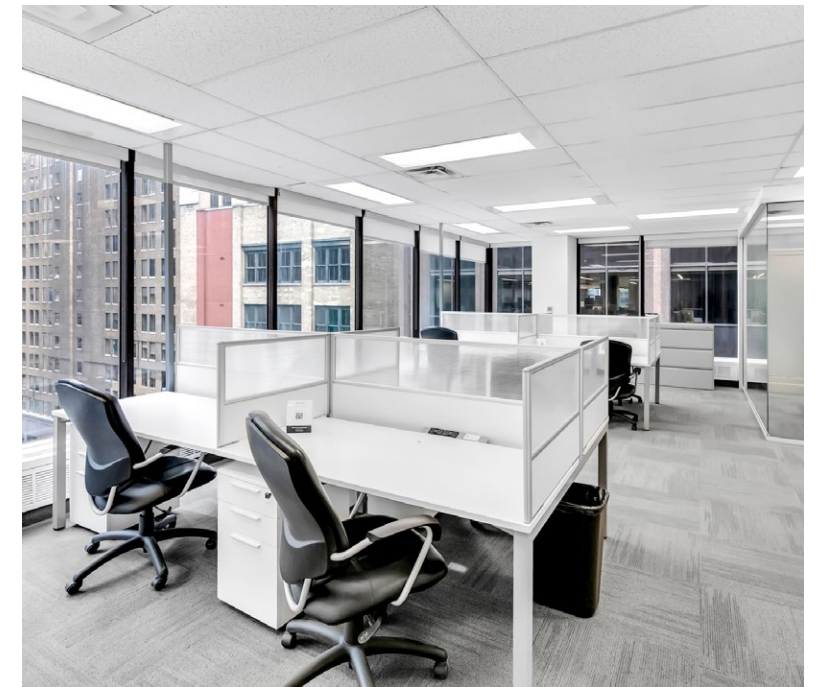
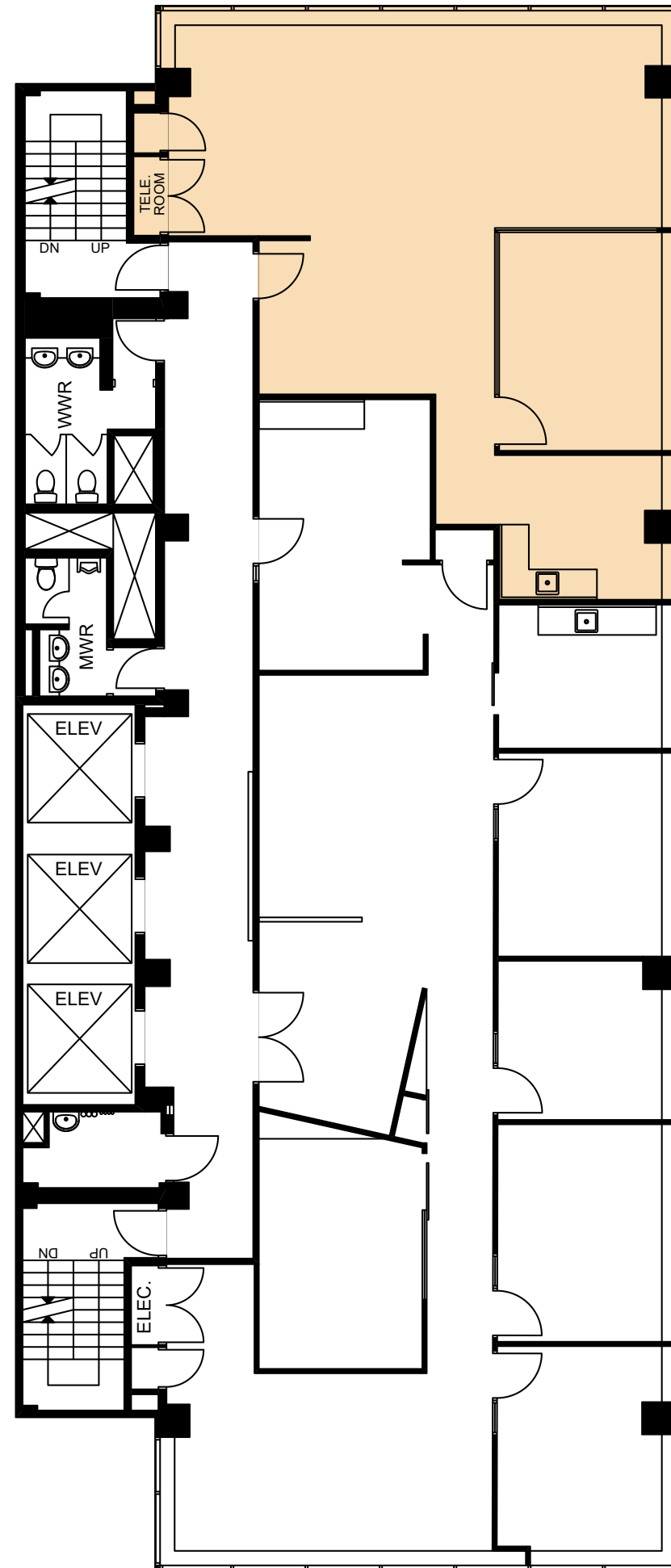
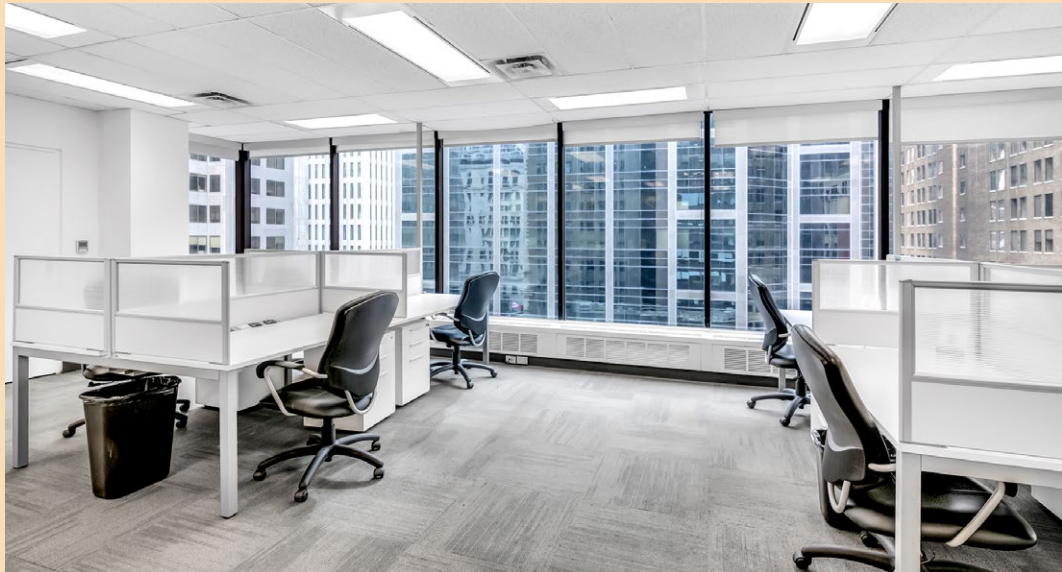
Potential Design



8th Floor | Suite 800

Size: **1,421 SF**

- Fully furnished
- Built out
- 10 Workstations
- 1 Glass Boardroom
- Kitchenette.
- North facing corner unit with lots of natural light.

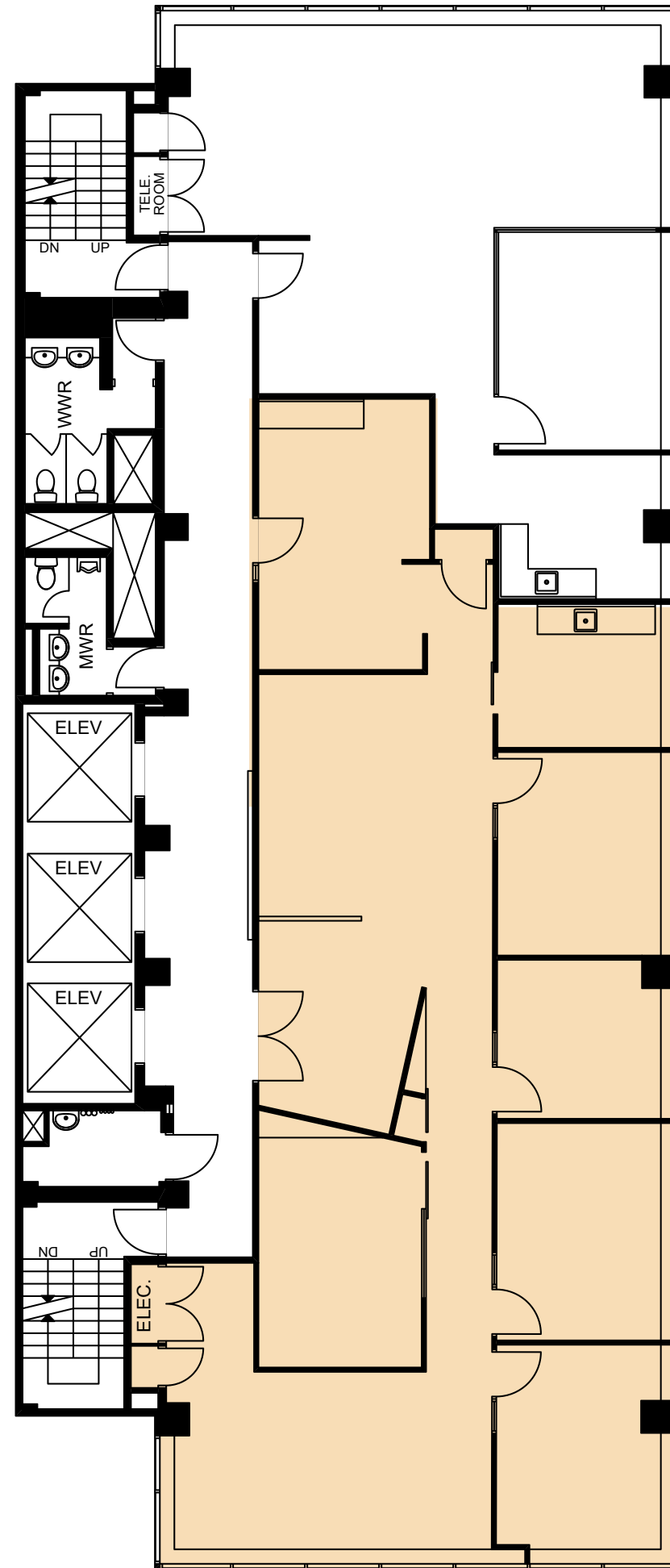




8th Floor | Suite 801

Size: **2,926 SF**

- Reception area
- 1 meeting room
- 4 private offices
- Multiple open-concept work areas
- Copy room/storage
- Separate kitchen
- Large windows throughout the unit
- Furniture available

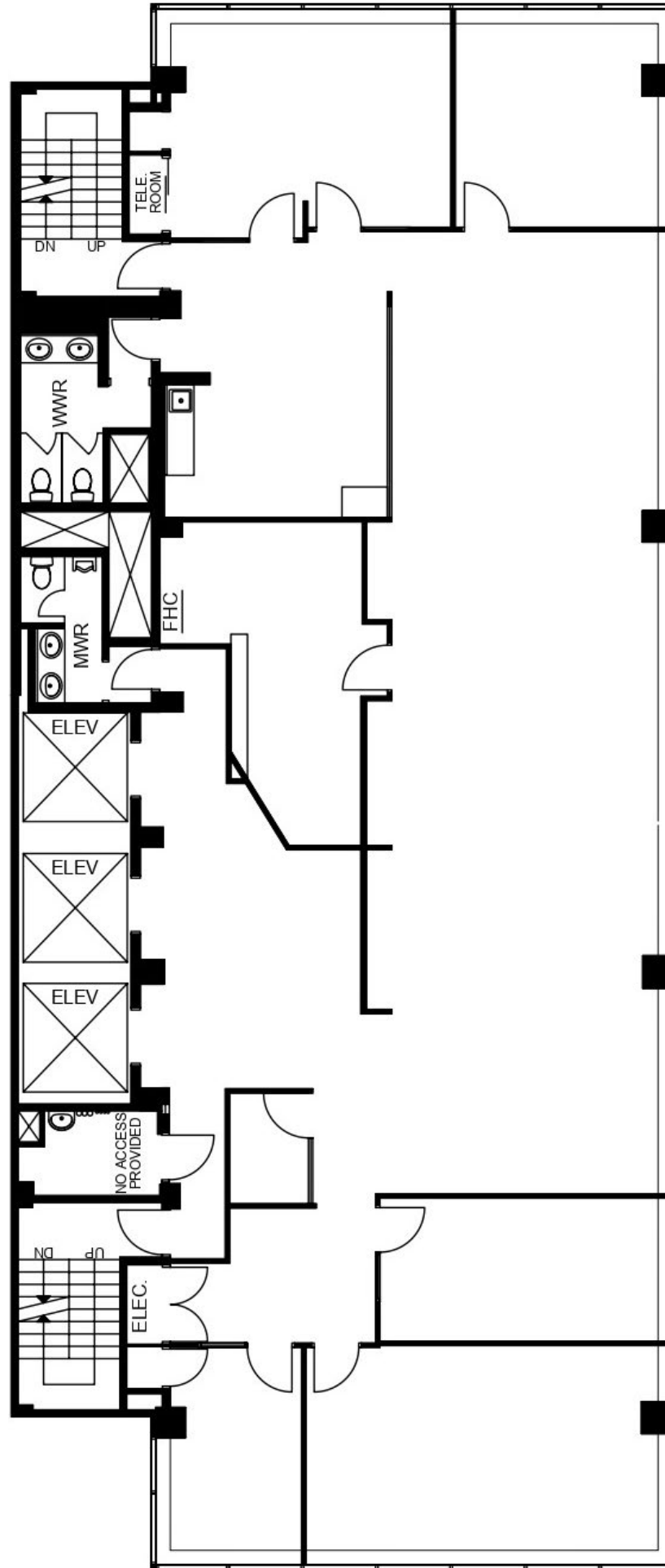
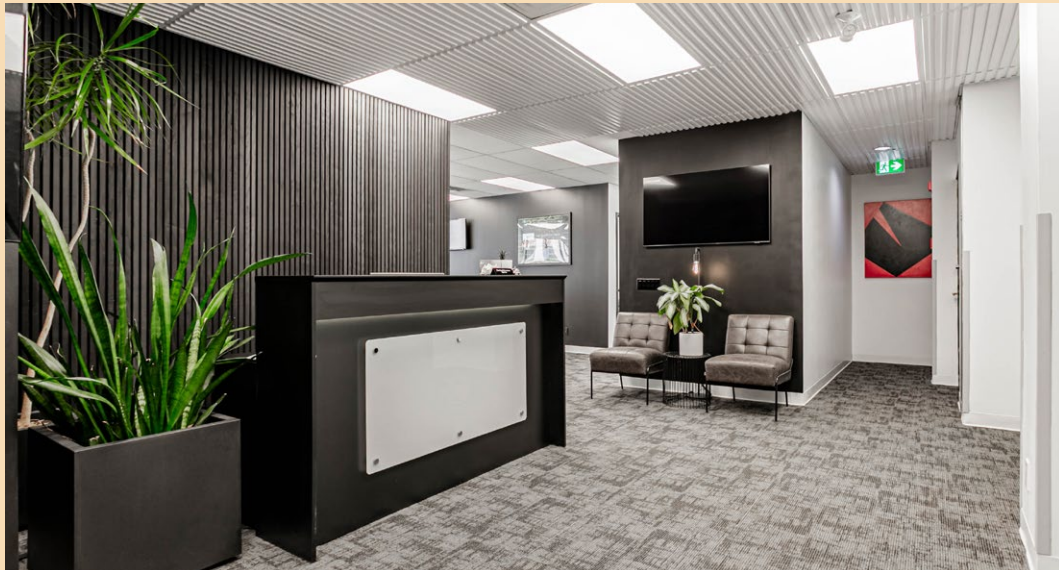




11th Floor | Suite 1100

Size: **4,354 SF**

- Full-floor
- Dedicated reception area
- 1 large conference room
- 4 private offices
- 1 phone room
- 1 Storage room
- Spacious open-concept work area
- Fully-equipped kitchen
- Lounge area
- Large windows throughout the unit, filled with natural light
- Furniture available

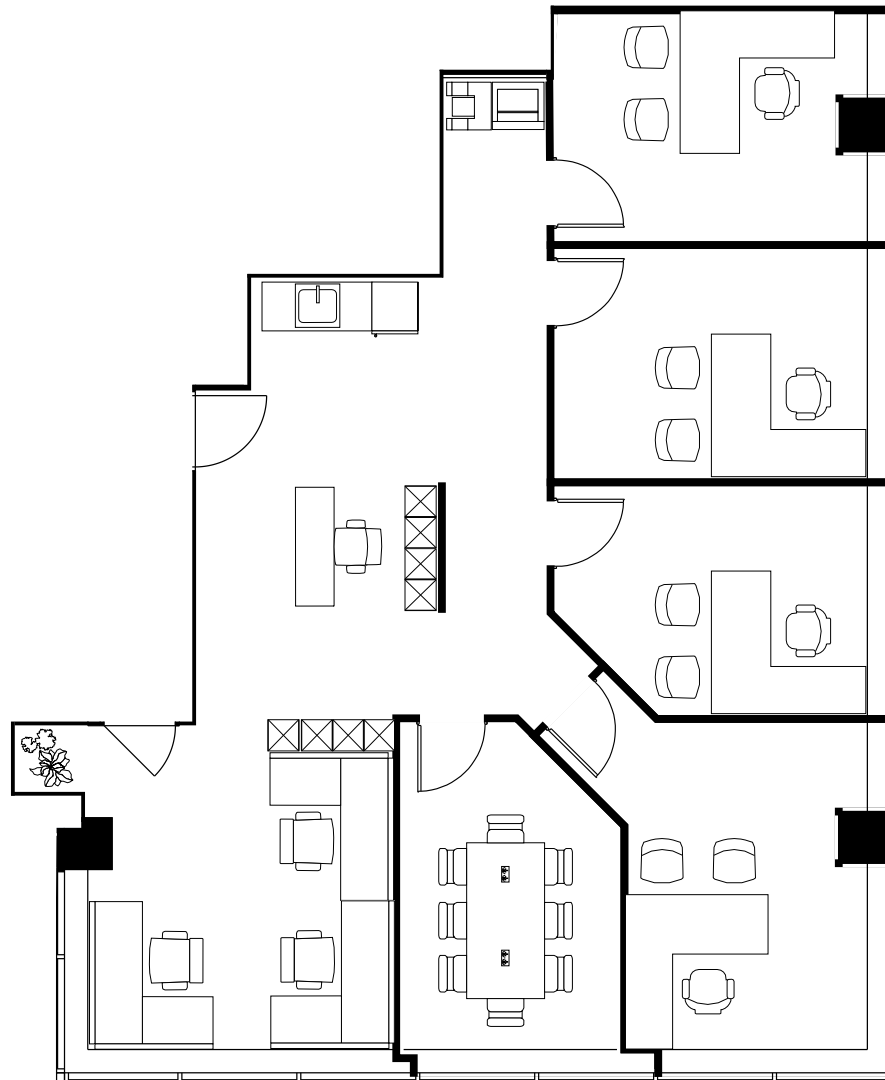
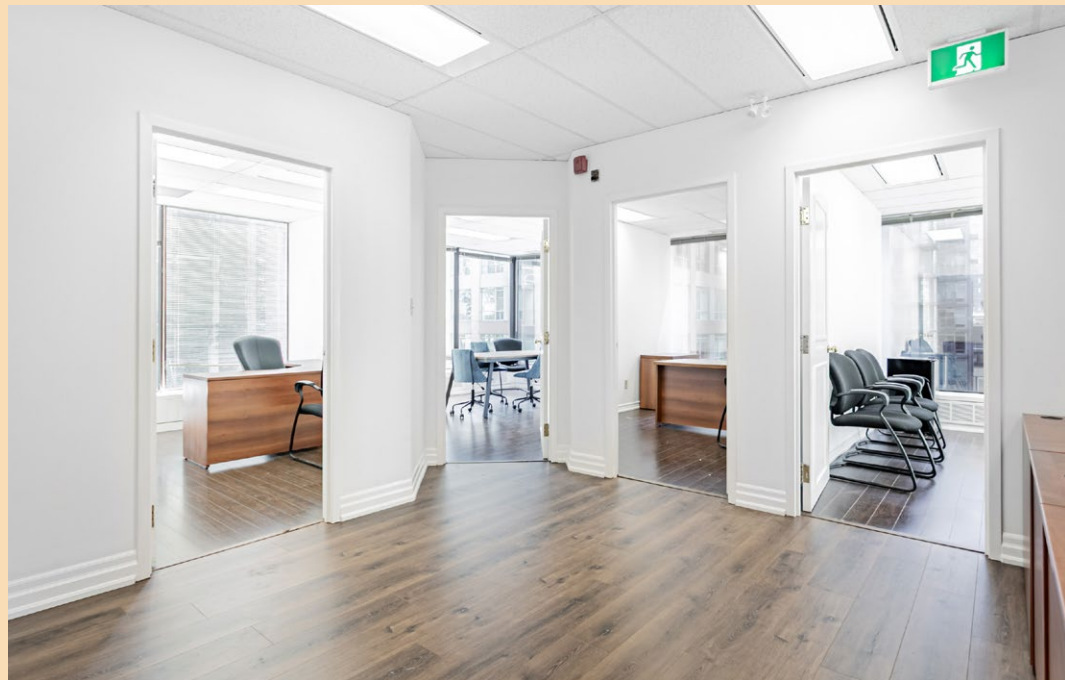




14th Floor | Suite 1401

Size: **1,660 SF**

- 6 private offices/meeting rooms
- Open-concept work area
- Floor to ceiling windows
- Hardwood floors
- Furniture available



Landlord to complete the above floor plan for incoming tenant.





Sustainability & Tenant Amenities



LEED Gold certification, showcasing the building's commitment to environmental sustainability



Onsite property management and 24/7 security



Secure bicycle storage



Inviting lobby and common areas designed to foster collaboration and productivity

Location



Steps from the King
Subway Station, and PATH
network.
3 blocks to Union Station



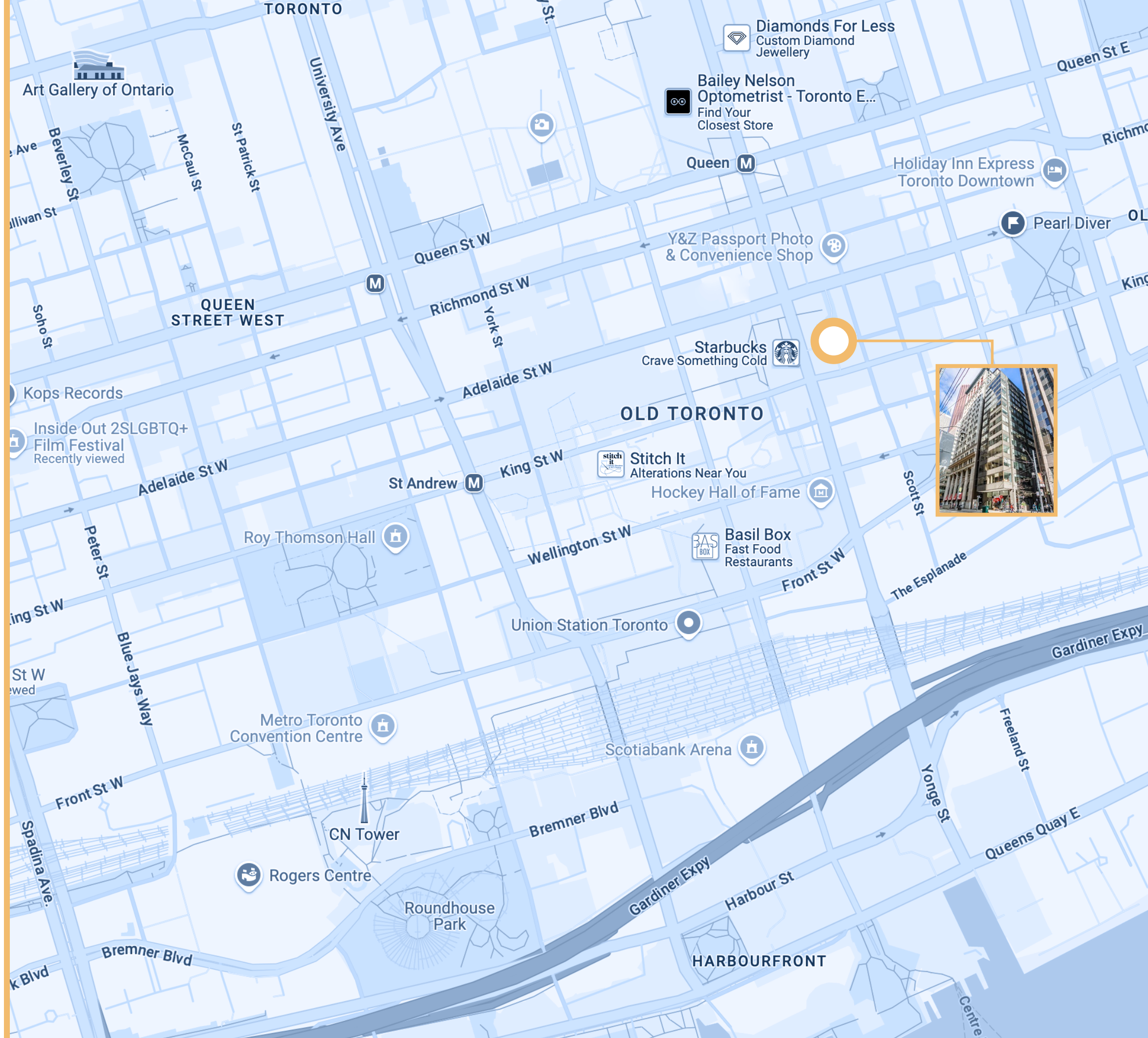
Surrounded by an
abundance of dining, retail,
and entertainment options



Easy access to TTC Subway and
Streetcar



Convenient access to major
highways and Toronto
Pearson International Airport



10 KING EAST

THE HIDDEN GEM OF
FINANCIAL DISTRICT

**KATE
RIZZARDO***
Associate
kate.rizzardo@jll.com
+1 (647) 464-5033