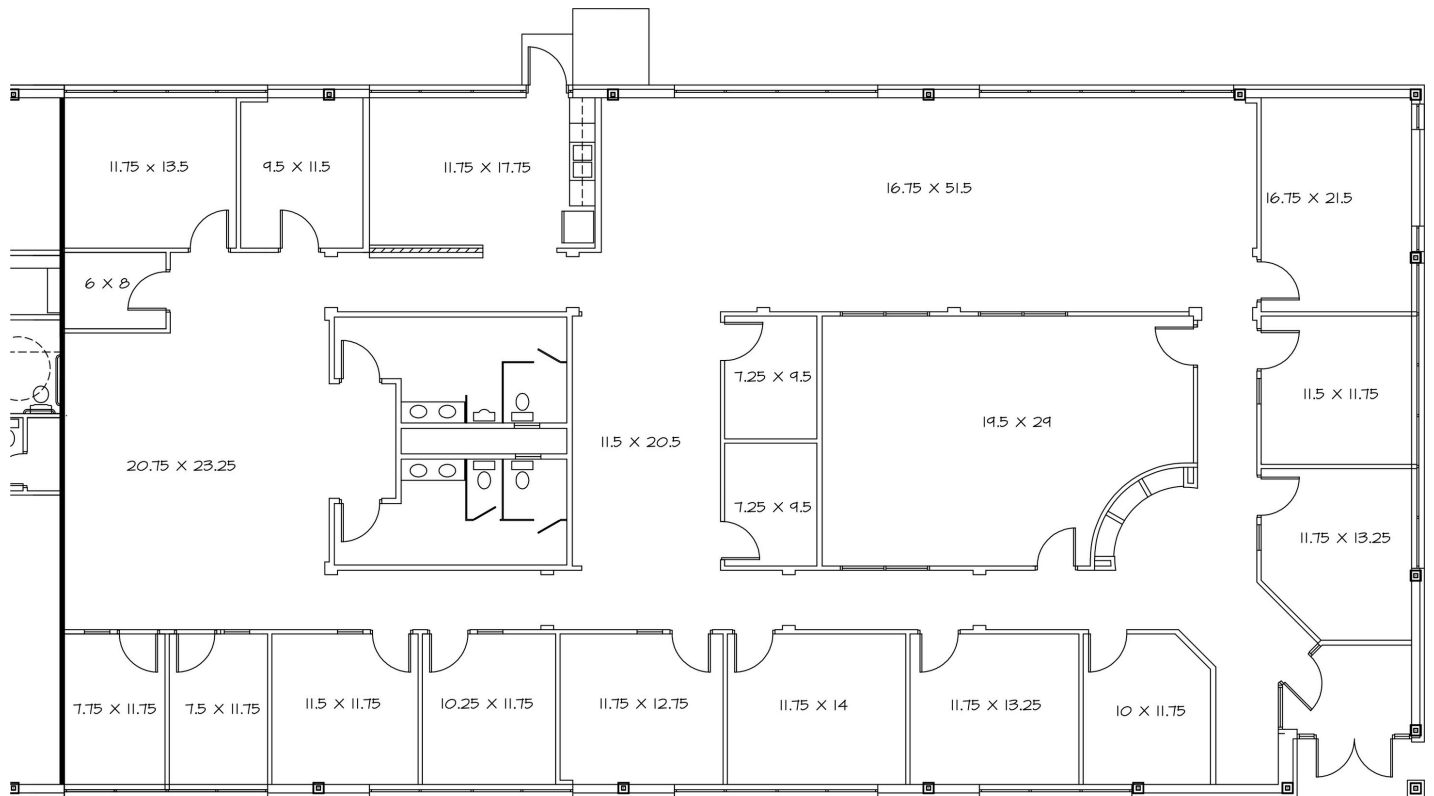
 **JLL** SEE A BRIGHTER WAY

For lease

9311 N. Meridian Street
Indianapolis, IN 46260

Floorplan

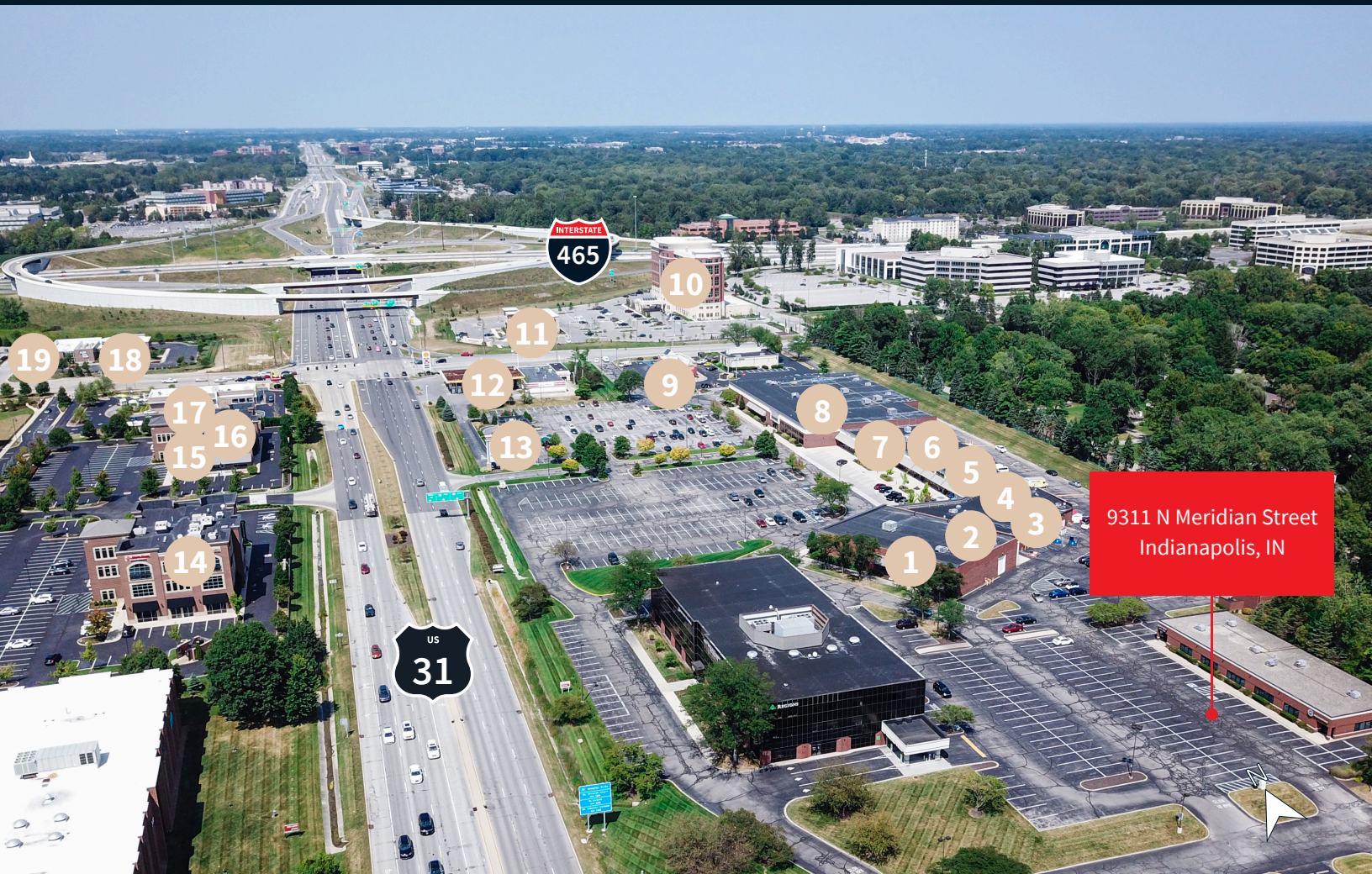


Property Highlights

- Office space available
- Ideally and centrally located at 96th & Meridian Street with immediate access to I-465
- 4/1,000 SF parking ratio
- High visibility with more than 45,000+ vehicles passing the building daily
- Direct / private suite entry
- Building signage opportunity

Location highlights

Highly amenitized area with Starbucks, Daddy Jack's/Kona Jack's, Another Broken Egg, Drury Plaza Hotel, IN Fitness Club, Dogtopia Doggie Daycare, plus a variety of other surrounding gym, restaurants, shopping, hotels and daycare centers. The building is 5 minutes to Downtown Carmel, 9 minutes to the Fashion Mall, 12 minutes to Clay Terrace, 20 minutes to Downtown Indianapolis, and 30 minutes to the Indianapolis International Airport, and



9311 N Meridian Street
Indianapolis, IN

- | | | | | |
|--|----------------------------------|--------------------------------------|----------------------------|---------------------------------|
| 1 Indy Dance Academy | 5 Yujo Ramen Bar | 9 Arby's | 13 Starbucks | 17 McDonald's |
| 2 Little Nail Shop | 6 Another Broken Egg Cafe | 10 Drury Plaza Hotel | 14 McAlister's Deli | 18 Lake City Bank |
| 3 Kona Jacks/Daddy Jacks | 7 Dogtopia | 11 Firebirds Wood Fired Grill | 15 Luciana's | 19 Aberdeen Social House |
| 4 Jacquie's Northside Nutrition Bar | 8 IN Fitness Club | 12 Circle K | 16 Swig | |



JLL

Connor Scott

Vice President

Connor.Scott@jll.com

+1 (317) 810-6399