

1776 N. MERIDIAN STREET, INDIANAPOLIS, IN 46202

FOR LEASE



OFFICE SPACE IN THE HEART OF THE INDY HEALTH DISTRICT



STRATEGIC HEALTH DISTRICT LOCATION

1776 N. Meridian Street sits at the heart of Indianapolis's thriving Health District with direct IndyGo Red Line access and proximity to the \$4 billion IU Health campus expansion. This rapidly evolving neighborhood combines vibrant residential developments like Wesley Place and The Stella with IU School of Medicine innovation, creating a unique live-work environment where healthcare leaders, researchers, and business professionals collaborate daily. With expanding dining and retail options plus direct access to Indiana's largest healthcare ecosystem, this location positions your organization within Indianapolis's most significant economic development success story.

DISTANCE TO



- 1 MIN** INDYGO RED LINE STOP
- 2 MIN** THE STELLA & WESLEY PLACE
- 4 MIN** CVS & WALGREENS
- 4 MIN** IU HEALTH METHODIST HOSPITAL
- 5 MIN** IU SCHOOL OF MEDICINE



1776 N. MERIDIAN STREET

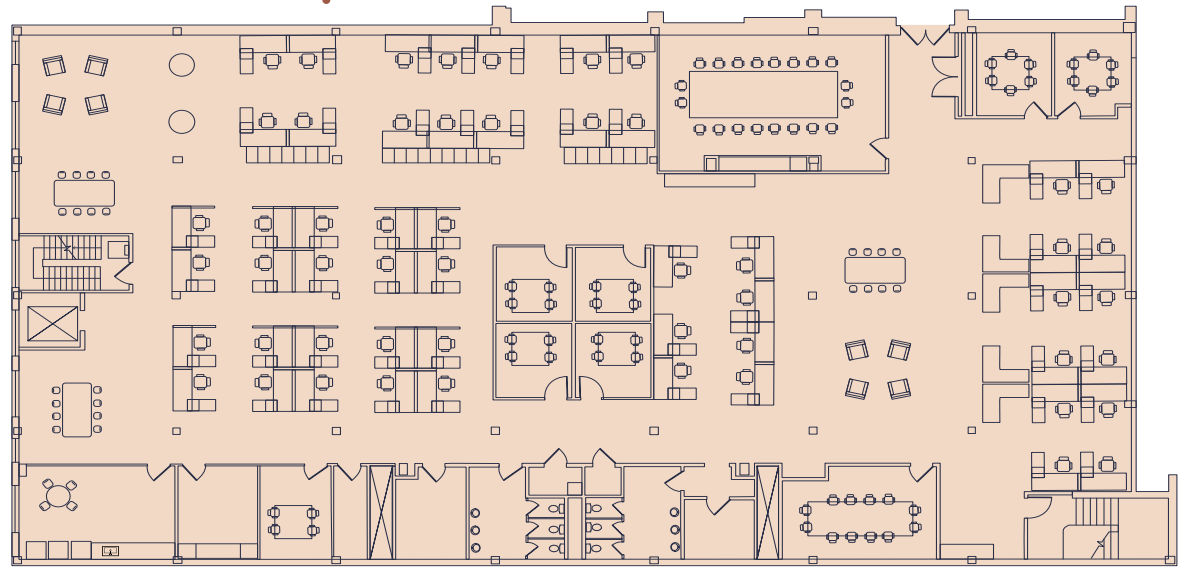
The Annex, located at 1776 N. Meridian Street is a well-maintained 23,743 SF professional office building positioned in Indianapolis's Health District. This property delivers the essential amenities and flexible spaces that modern businesses require, with white-box conditioning that allows for complete customization to meet any Tenant's needs.

- On-site surface-level parking
- Secured building with 24/7 key code access
- Prominent signage opportunity
- Located on high-traffic Meridian Street
- Direct proximity to IndyGo Red Line

11,133 RSF OF CUSTOMIZABLE SPACE

- Full floor
- White-box space
- Ample natural light
- Flexible layout
- Exterior signage opportunity
- Contact broker for pricing

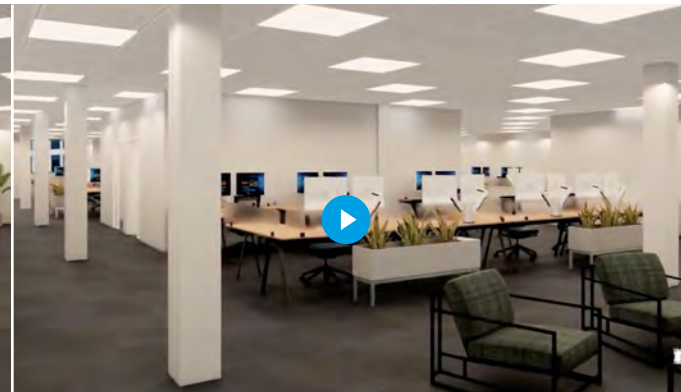
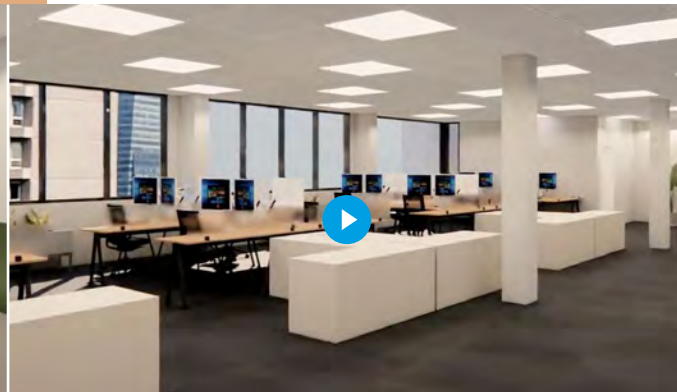
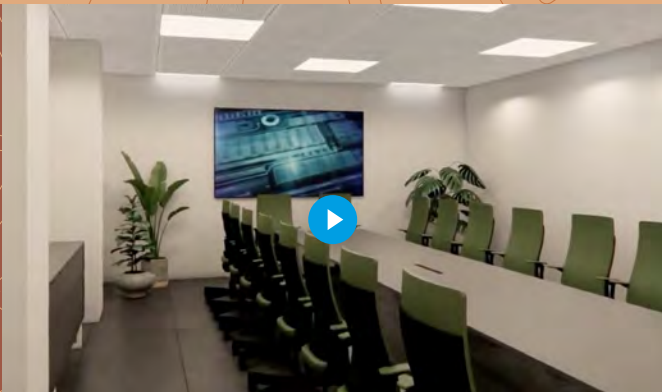
FLOOR 2



*Note: Current space does not have furniture.
Plan given is used as an example layout*

3D VIRTUAL TOUR

Click or scan to watch



CONTACT

CONNOR SCOTT

+1 317 810 6399

connor.scott@jll.com

WILDER CART

+1 317 810 7176

wilder.cart@jll.com



Although information has been obtained from sources deemed reliable, JLL does not make any guarantees, warranties or representations, express or implied, as to the completeness or accuracy as to the information contained herein. Any projections, opinions, assumptions or estimates used are for example only. There may be differences between projected and actual results, and those differences may be material. JLL does not accept any liability for any loss or damage suffered by any party resulting from reliance on this information. If the recipient of this information has signed a confidentiality agreement with JLL regarding this matter, this information is subject to the terms of that agreement. ©2026 Jones Lang LaSalle Brokerage, Inc. All rights reserved.