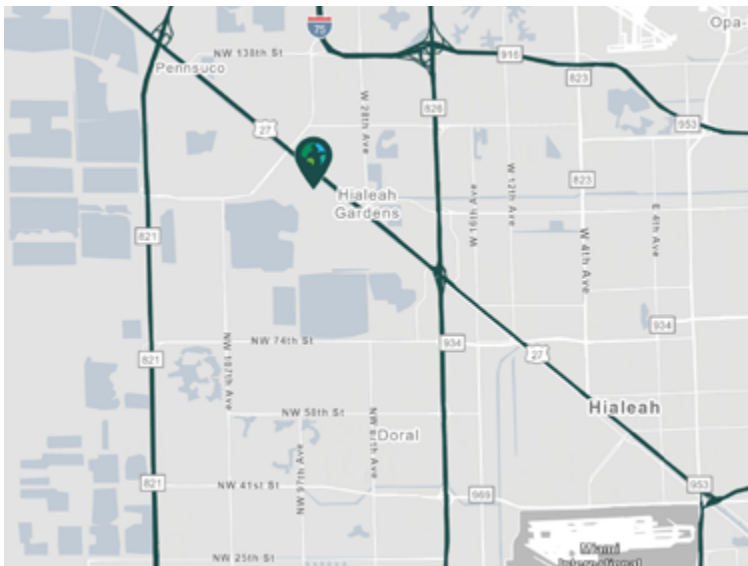


3,951 SF

**9401 NW 106th Street
Medley, FL 33178 USA**

Prologis Medley Palms



- Strategically positioned in the heart of Medley, this warehouse offers an exceptional opportunity for businesses seeking a prime logistics hub in an strategic industrial zone.
- Situated just minutes from the Palmetto Expressway (SR 826) and the Dolphin Expressway (SR 836), ensuring swift access to Miami International Airport and PortMiami.

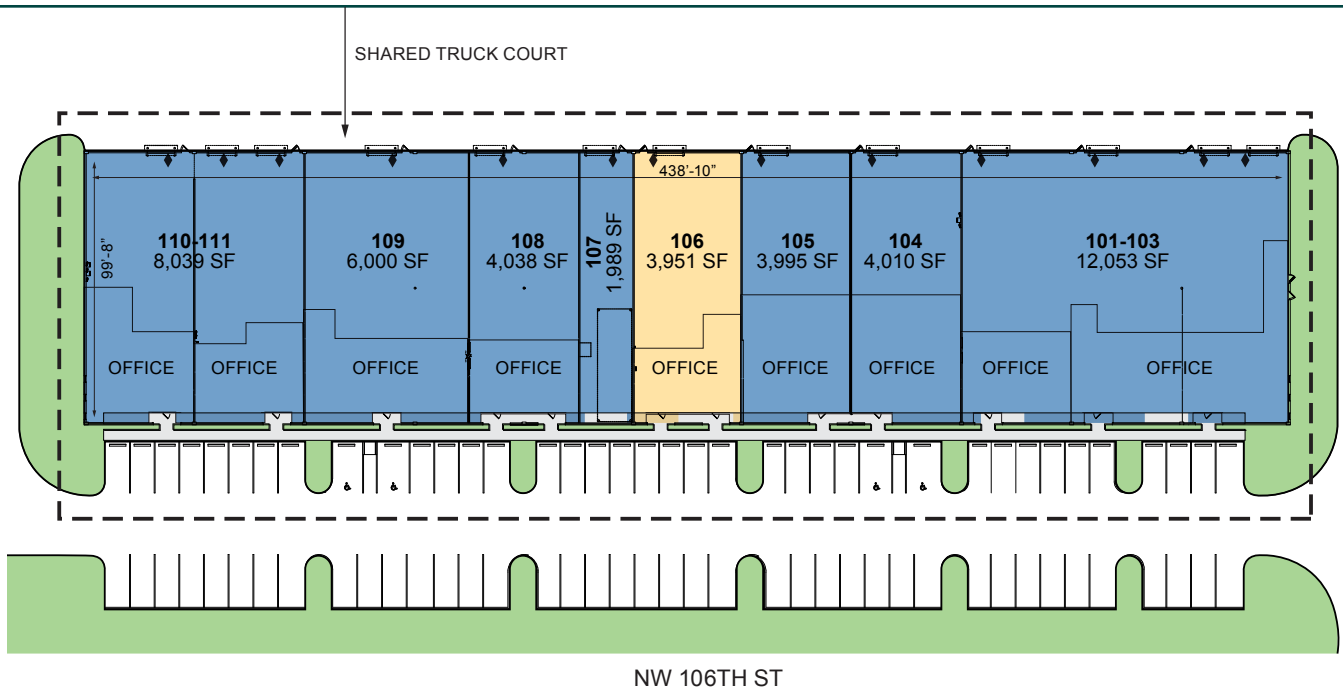
Property Features

Available Space	3,951 SF
Office SF	1,286 SF
Clear Height	18'
Drive-in Doors	1
Zoning	M-1
Car Parking Ratio	0.34/1,000SF
Trailer Parking	Adjacent 4.8 acres available
Sprinkler	Wet system
Available	Immediately

Prologis Clear Lease® – Know your lease expenses and capital cost with greater certainty before your sign



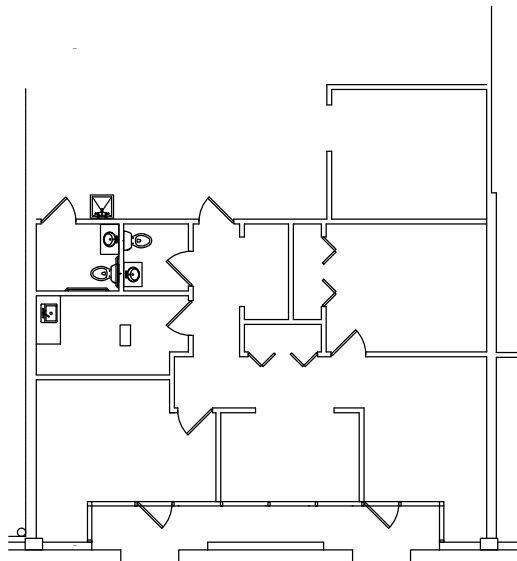
Unlock the full potential of your warehouse with one strategic, single-source partner.



SUITE 106 OFFICE

LEGEND

- ▼ Dock position
- ◆ Drive-in door
- Available
- Leased
- Land



JLL
Ana Rivera
 ana.rivera@jll.com
 ph +1 305 778 7652

JLL
Juan Mazuera
 juan.mazuera@jll.com
 ph +1 786 553 5131

Prologis
Natalie Roque
 nroque@prologis.com
 ph +1 305 392 4260

prologis.com