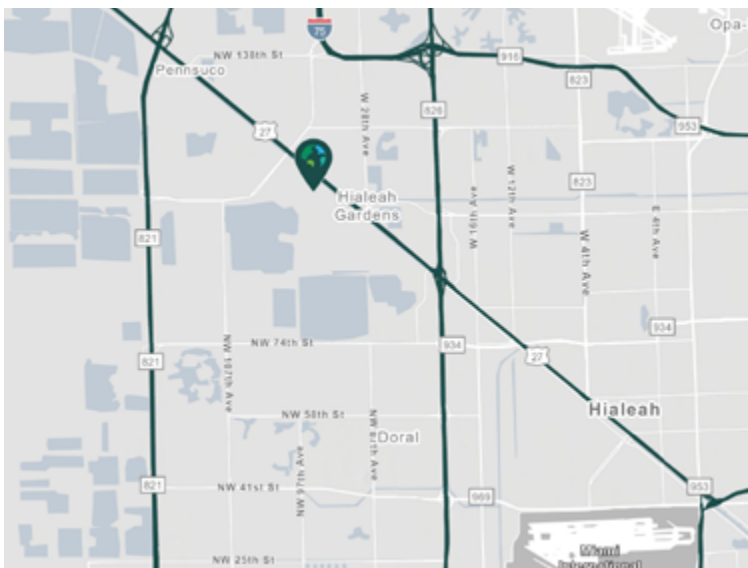


3,995 SF

9401 NW 106th Street
Medley, FL 33178 USA

Prologis Medley Palms



- Strategically positioned in the heart of Medley, this warehouse offers an exceptional opportunity for businesses seeking a prime logistics hub in an strategic industrial zone.
- Situated just minutes from the Palmetto Expressway (SR 826) and the Dolphin Expressway (SR 836), ensuring swift access to Miami International Airport and PortMiami.

Property Features

Available Space	3,995 SF
Office SF	1,874 SF
Clear Height	18'
Drive-in Doors	1
Car Parking Ratio	0.34/1,000SF
Trailer Parking	Adjacent 4.8 acres available
Zoning	M-1
Sprinklers	Wet system
Available	Immediately

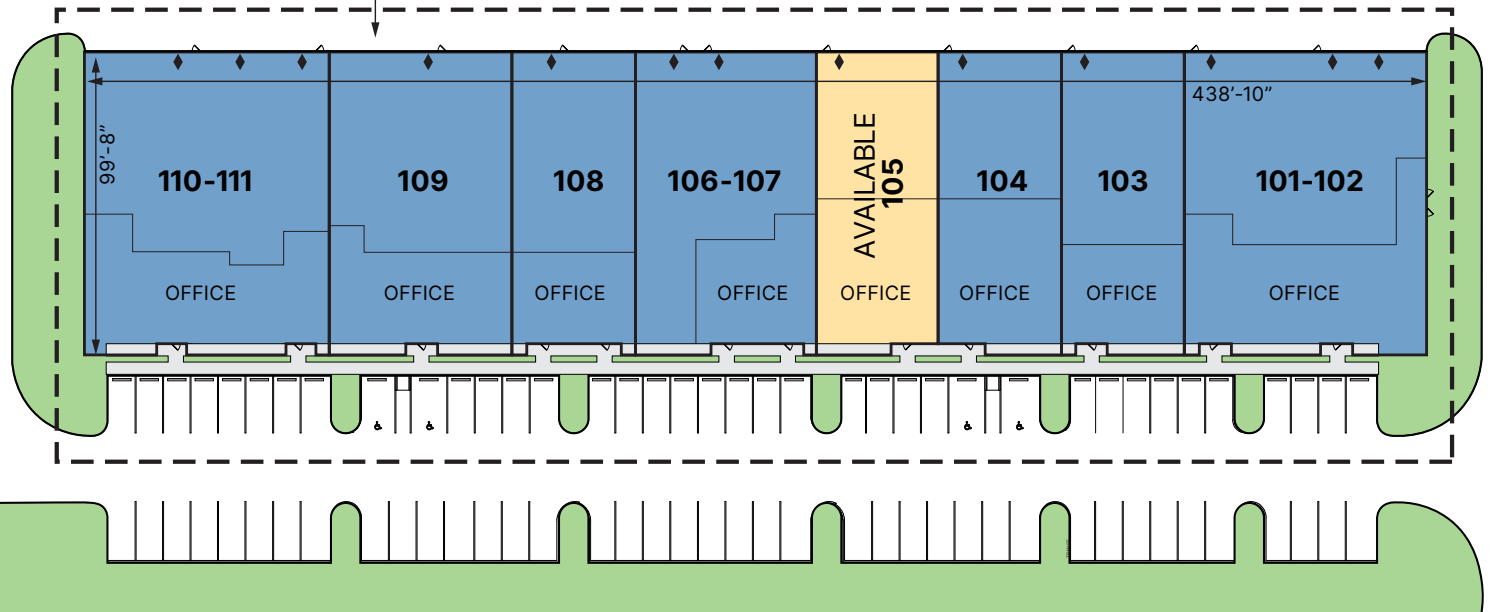
Prologis Clear Lease® – Know your lease expenses and capital cost with greater certainty before your sign



Unlock the full potential of your warehouse with one strategic, single-source partner.



SHARED TRUCK COURT



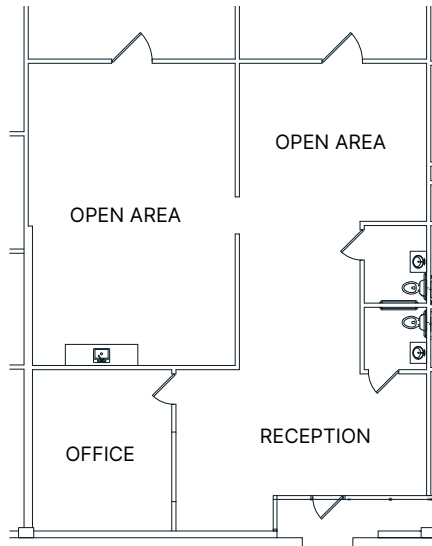
NW 106TH ST



SUITES 105 OFFICE
1,874 SF

LEGEND

- ▼ Dock position
- ◆ Drive-in door
- Available
- Leased
- Land



JLL
Ana Rivera
ana.rivera@jll.com
ph +1 305 778 7652

JLL
Juan Mazuera
juan.mazuera@jll.com
ph +1 786 553 5131

Prologis
Natalie Roque
nroque@prologis.com
ph +1 305 392 4260

prologis.com