



For Lease

6115 Falls Road
Baltimore, MD 21209

Matt Haas

Senior Managing Director

matt.haas@jll.com

+1 410 707 5820

Kevin Haus

Senior Managing Director

kevin.haus@jll.com

+1 410 960 2450

Jesse Schwartzman

Vice President

jesse.schwartzman@jll.com

+1 410-852 4106

Availabilities

Lower Level

- 3,206 rentable square feet

First floor

- Suite 100: 2,303 rentable square feet

Second floor

- 9,164 rentable square feet

Third floor

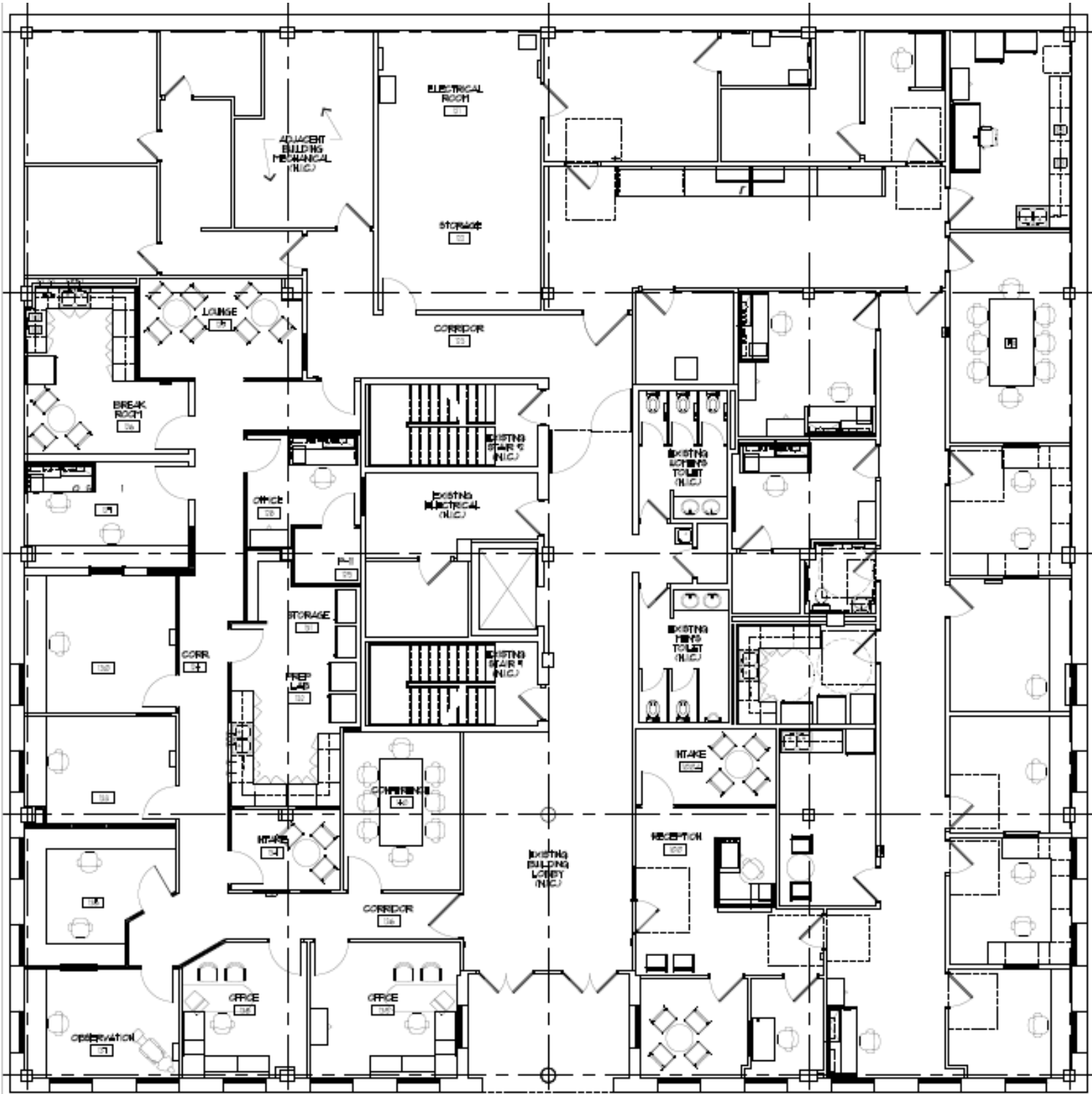
- Suite 350: 2,707 rentable square feet

Building Highlights

- Efficient existing buildout
- On-site ownership and property management
- Within walking distance to restaurants and shopping
- Conveniently located next to the Falls Road Light Rail Station, exits to I-83, Lake Roland Park, nature Center and several walking trails
- Ample surface parking
- Rental rate: \$25.00 p.s.f. full service

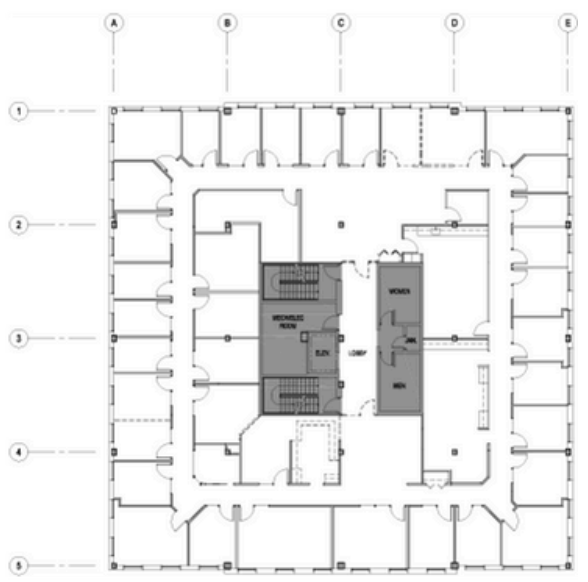
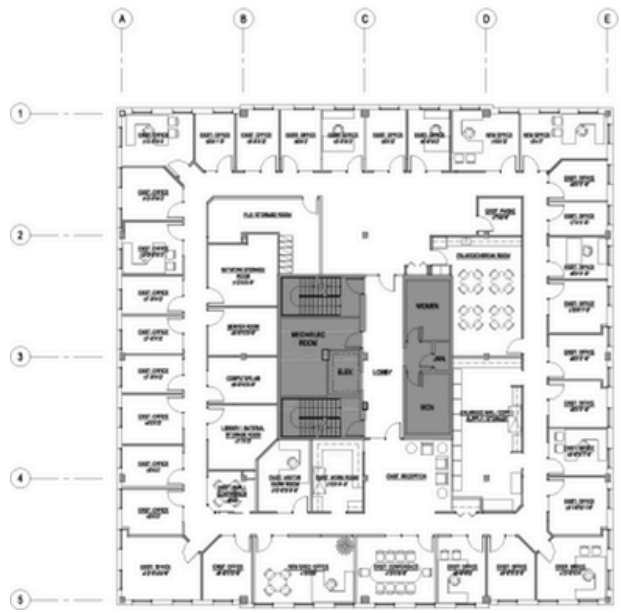
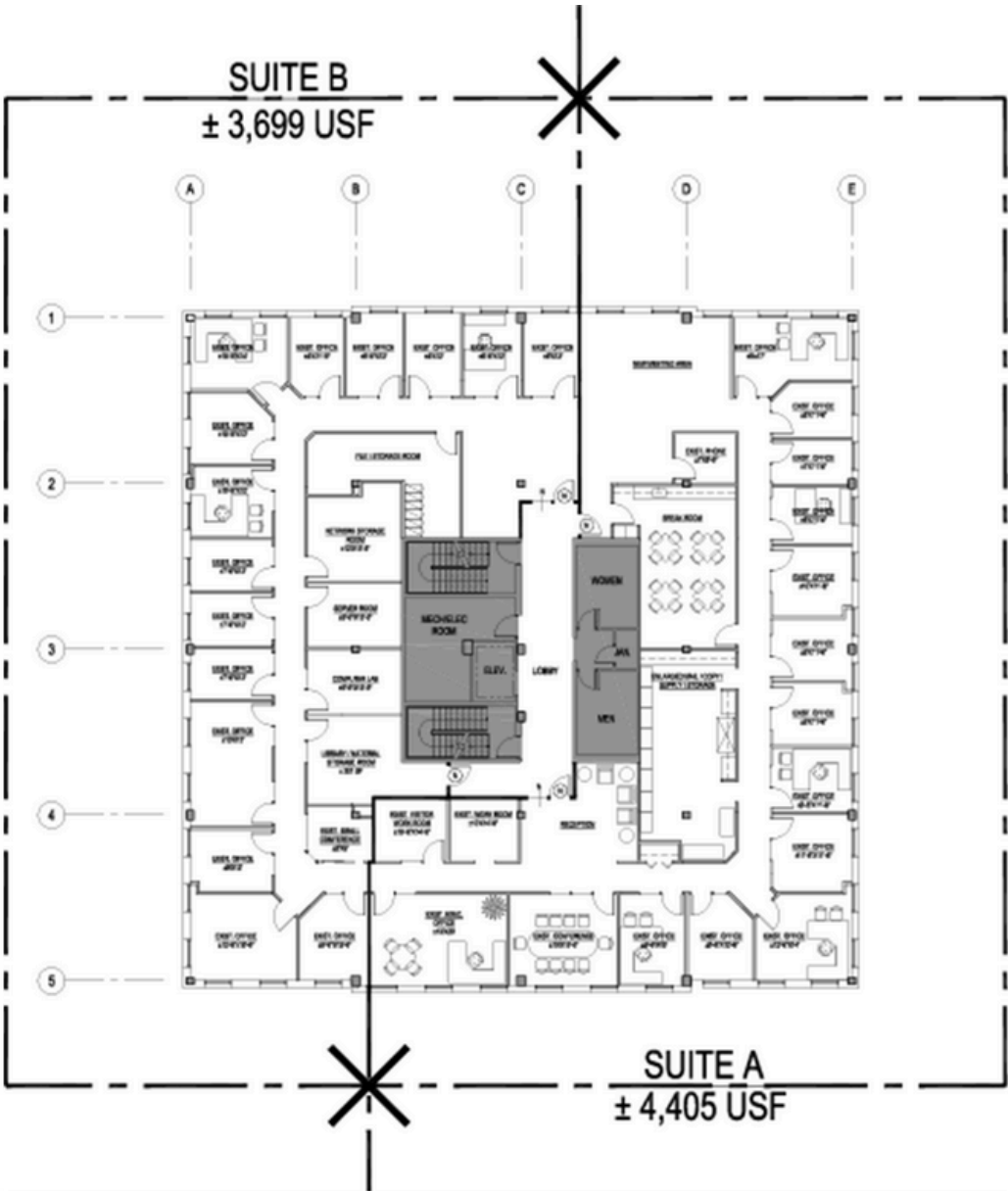
Floorplan

Lower level



Floorplans

2nd floor



Photos





Matt Haas

Senior Managing Director
matt.haas@jll.com
+1 410 707 5820

Kevin Haus

Senior Managing Director
kevin.haus@jll.com
+1 410 960 2450

Jesse Schwartzman

Vice President
jesse.schwartzman@jll.com
+1 410-852 4106