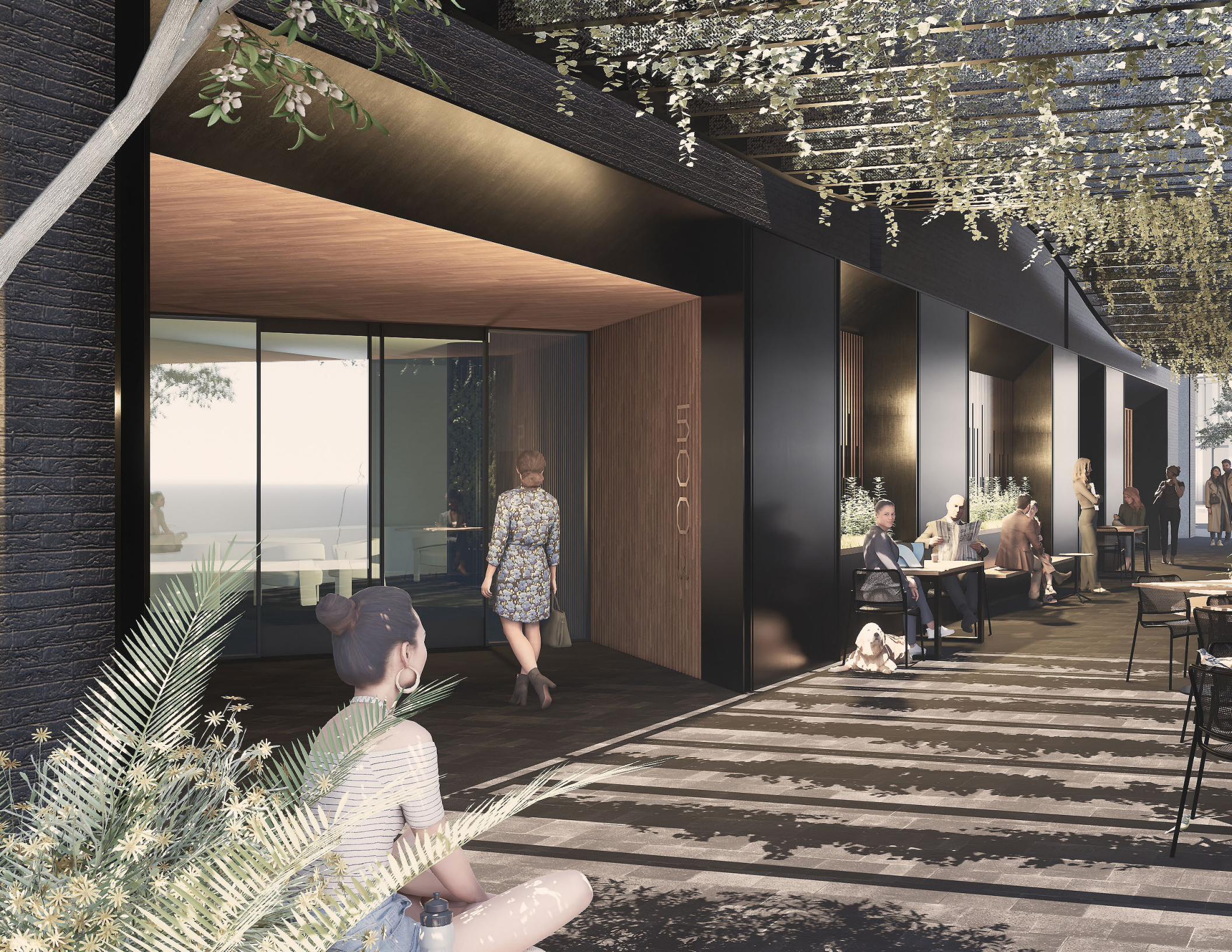


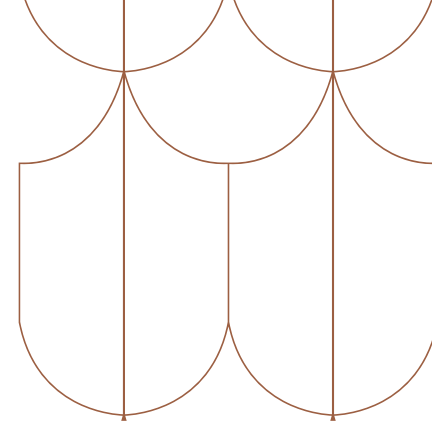


PARK

washington

500 WASHINGTON STREET • SAN FRANCISCO

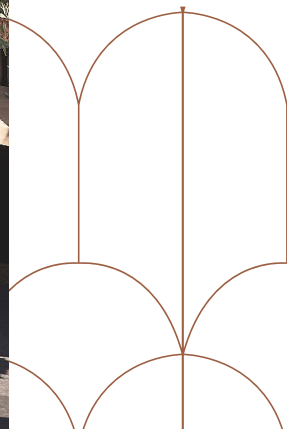




Welcome to Park Washington

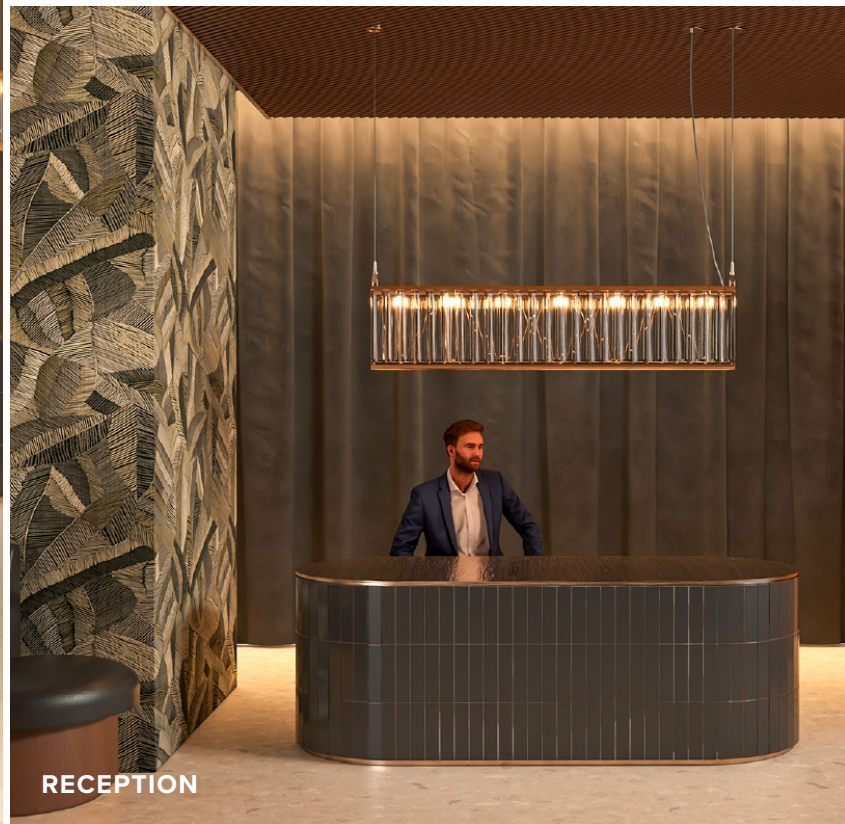
JACKSON SQUARE'S NEW CHAPTER

Park Washington isn't just a building; it's a statement. This boutique office destination is crafted for those who dare to think differently - the creatives, the innovators, and the forward-thinkers who shape our future. Here, at the heart of San Francisco's rich tapestry of culture and commerce, we're writing the next chapter of Jackson Square's storied history.





LOBBY



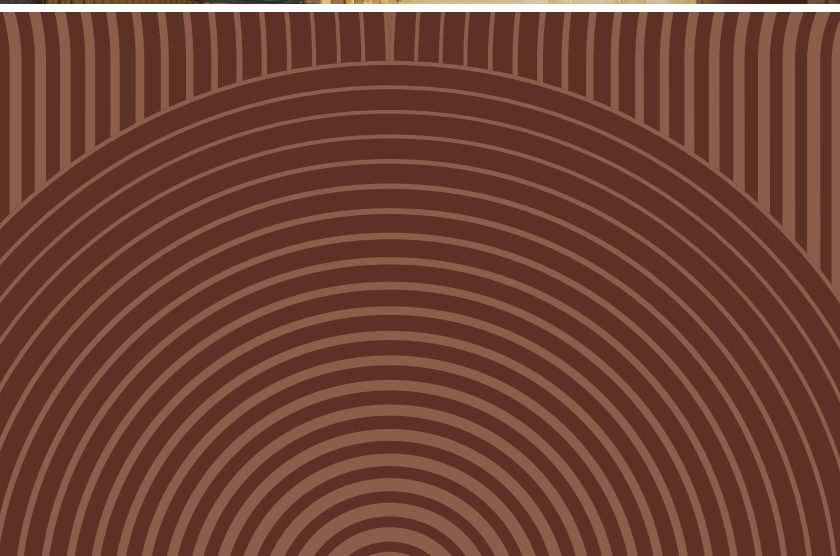
RECEPTION



WELLNESS CENTER



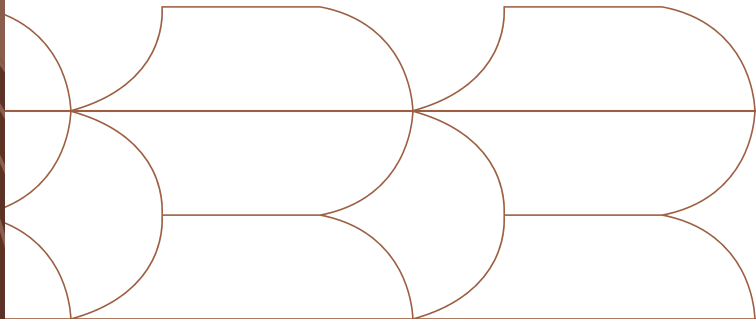
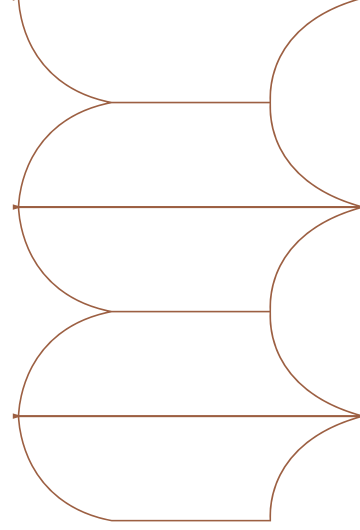
EUREKA LOUNGE



Vision

Park Washington is more than a workplace—it's a cultivated extension of daily life. Set within the fabric of Jackson Square's historic charm, it invites you to linger, to connect, and to recharge. Whether you're dining with colleagues, taking time to reflect between meetings, or moving seamlessly from work to wellness, Park Washington offers a concentrated blend of thoughtful amenities—cafés, bars, a gym, and gathering spaces—designed for those who seek more than just a desk.

It is a place to belong when you're not at home.



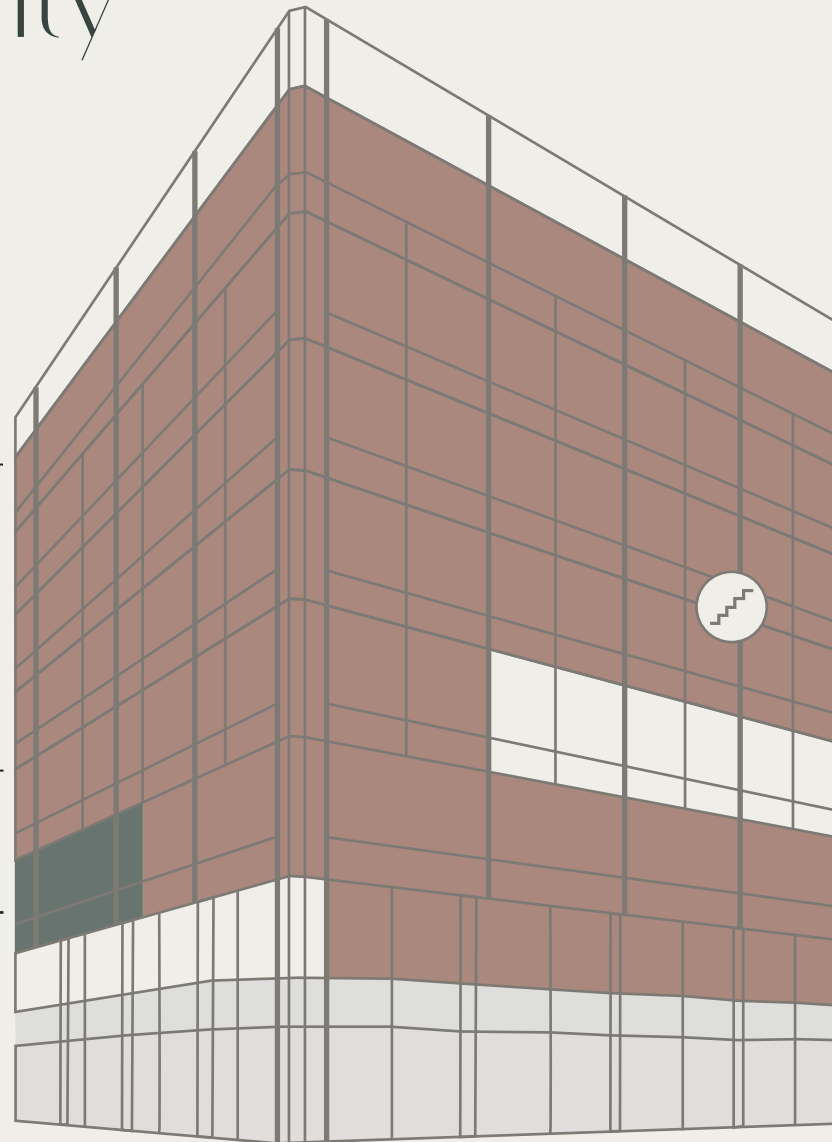
*Preliminary design subject to change

Availability

- Occupancy-Ready Suites
- Eureka Lounge
- Ⓢ Interconnecting stairs between levels 5 & 6

**58,358 RSF
CONTIGUOUS
BLOCK**

EUREKA LOUNGE



PRIVATE TERRACES

| 11/1/26

| Vacant

| Vacant

| Vacant

| Vacant

| Vacant

| Vacant



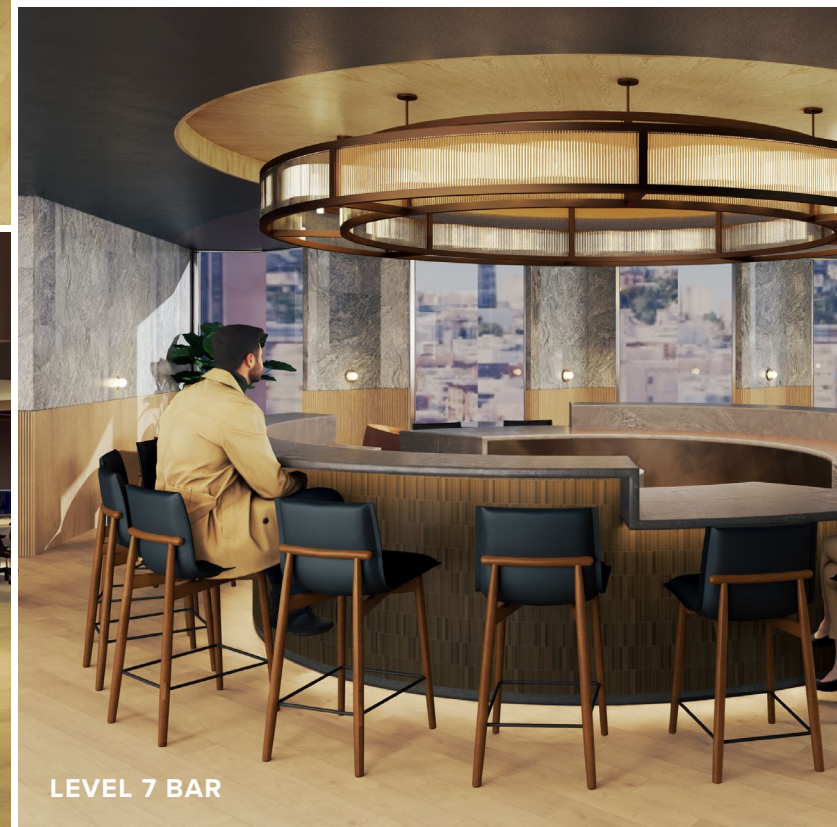
Click on floor numbers to view available floors



EUREKA LOUNGE



LEVEL 7 BAR SEATING



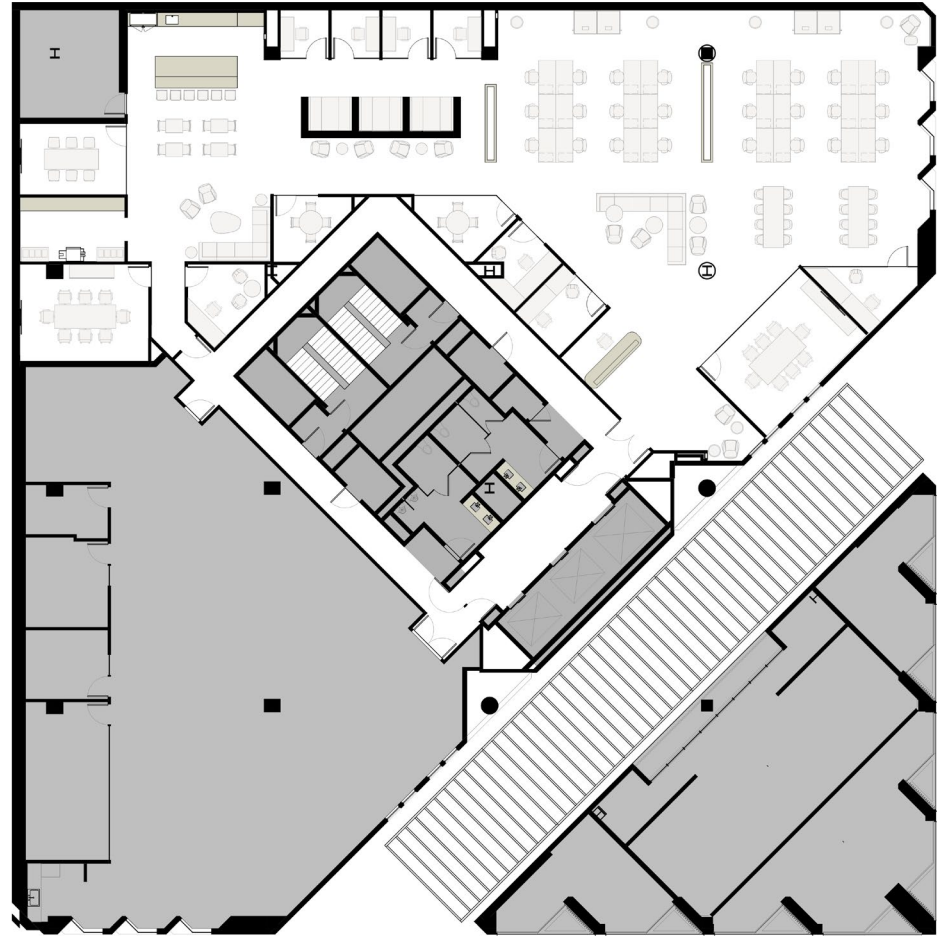
LEVEL 7 BAR

SUITE 250

±8,936 SF | Vacant



**Photos display hypothetical buildout*



Fully furnished, high-end, spec-suite available now.

SUITE 300

±6,500 SF | Vacant



**Photos display hypothetical buildout*



Hypothetical plan available on "turnkey" basis. Exclusive roof deck, conference facility/tenant lounge (Eureka Room) on balance of the floor.

SUITE 350

±4,000 SF | Vacant



**Photos display hypothetical buildout*



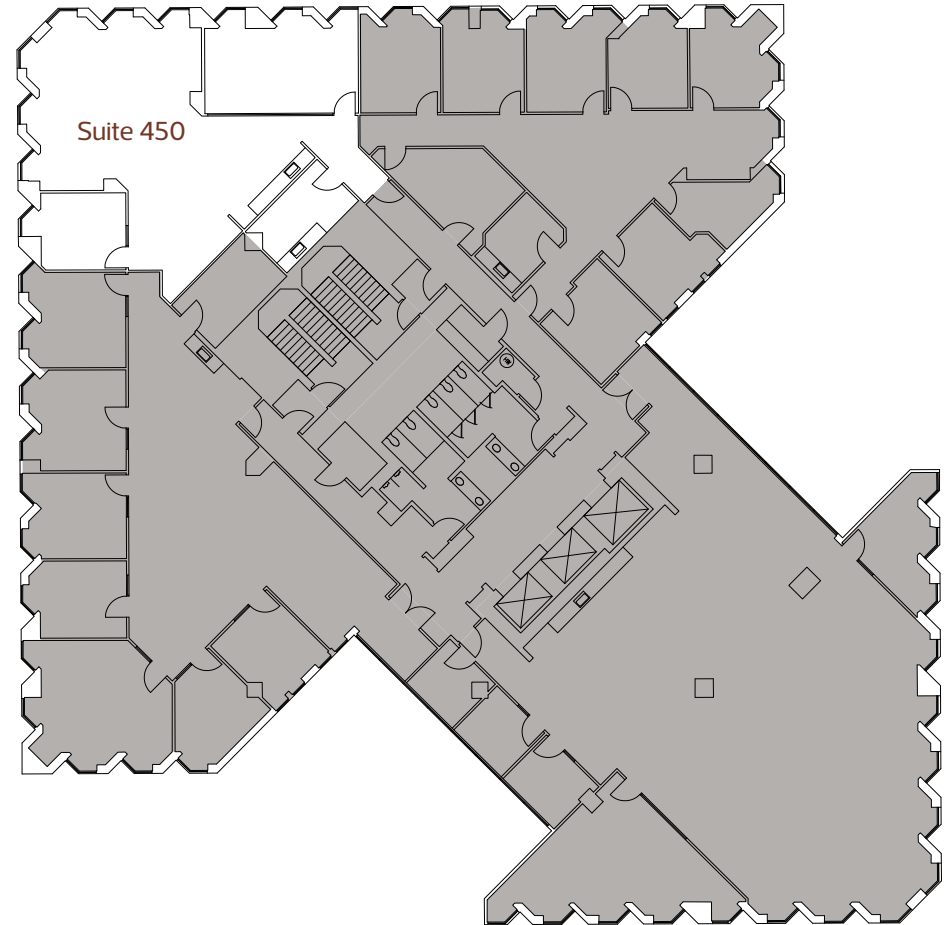
Hypothetical plan available on "turnkey" basis. Conference facility/tenant lounge (Eureka Room) on balance of the floor.

SUITE 450

±2,233 SF | Available Jan 2027



**Photos display hypothetical buildout*



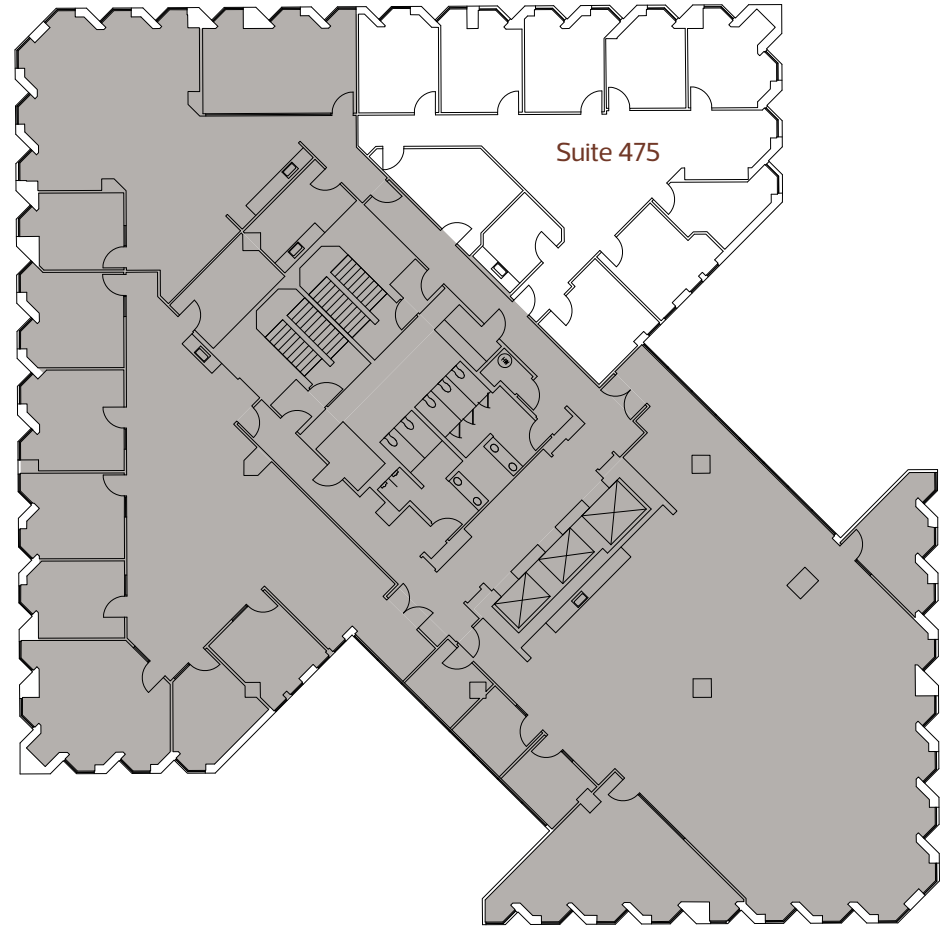
1 conference room | 1 private office | Kitchen | Open area

SUITE 475

±2,971 SF | Available within 30-60 days



**Photos display hypothetical buildout*



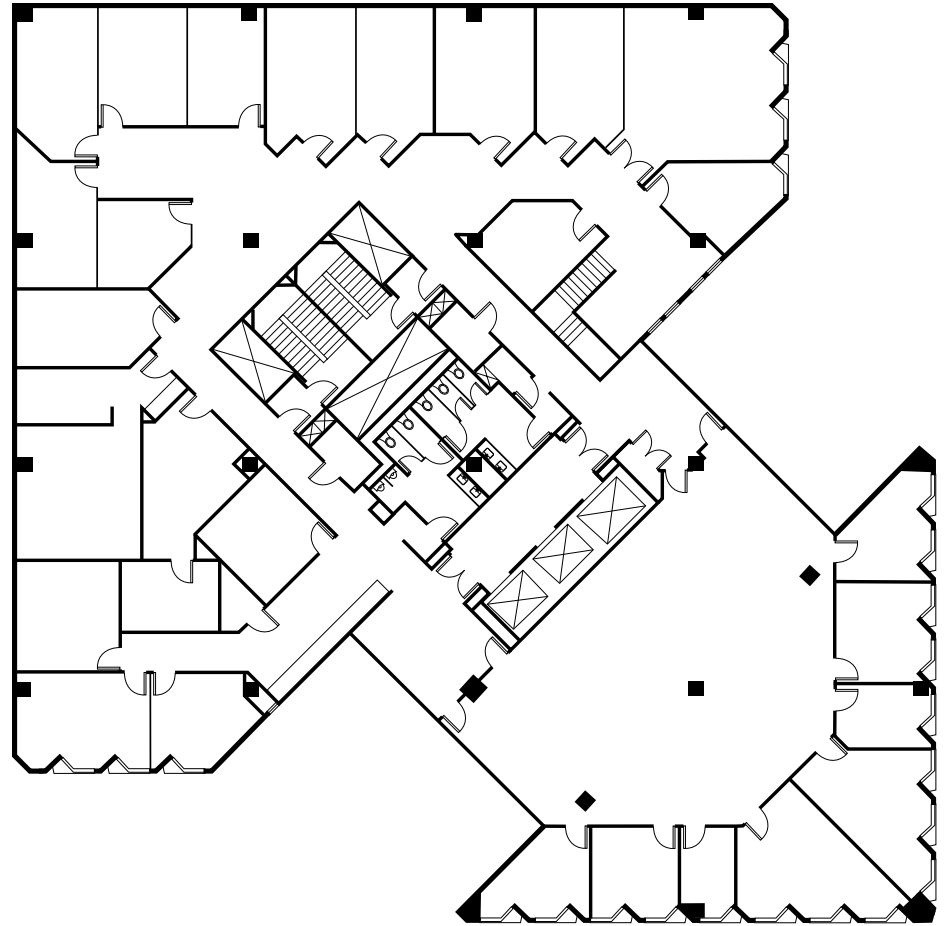
9 private offices | Kitchen | Open area

SUITE 500

±14,493 SF | Vacant



**Photos display hypothetical buildout*



Interconnecting stairwell between the 5th and 6th floors.

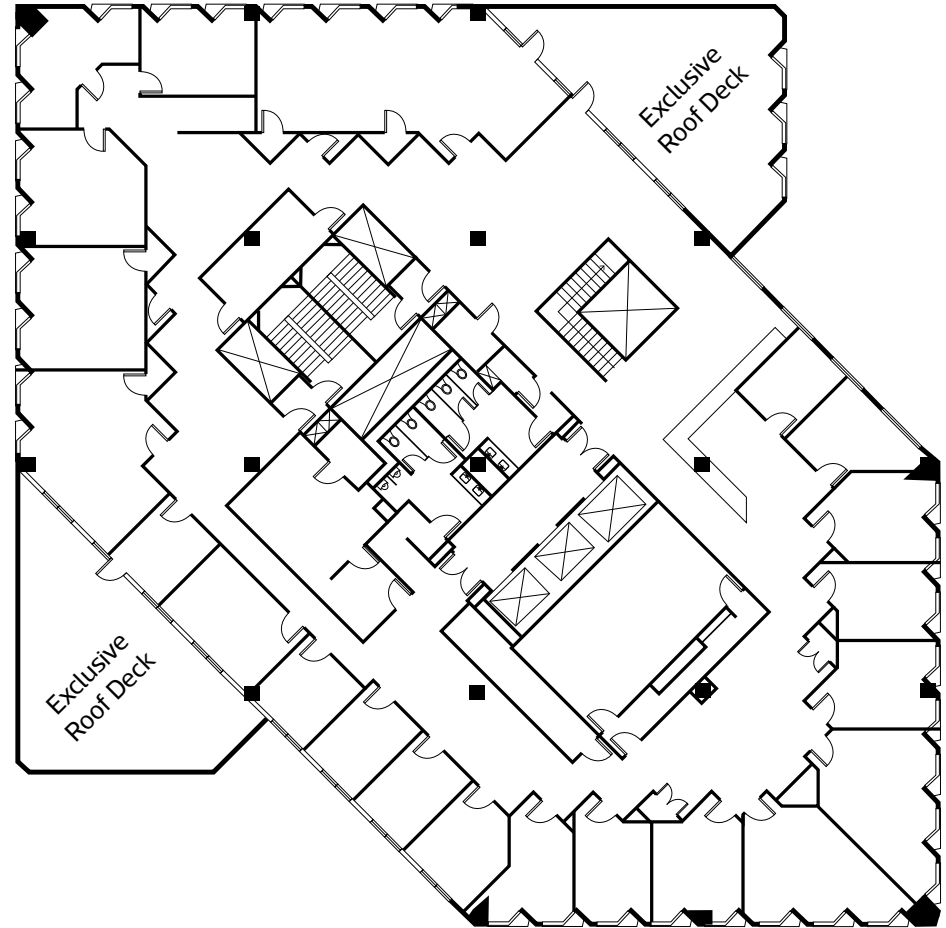
Can be combined with floors 6-8 for a total of 58,358 RSF

SUITE 600

±15,763 SF | Vacant



**Photos display hypothetical buildout*



Two exclusive roof decks overlooking Coit Tower and Redwood Park. Interconnecting stairwell between the 5th and 6th floors.

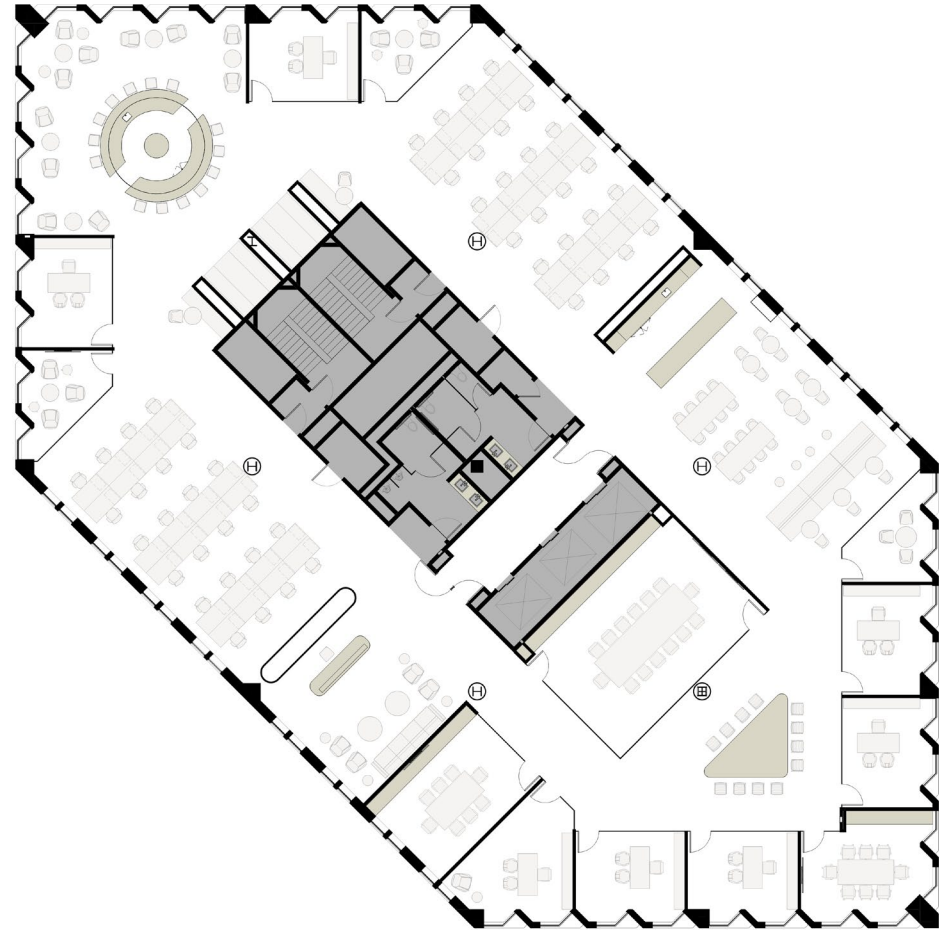
Can be combined with floors 5, 7, and 8 for a total of 58,358 RSF

SUITE 700

±14,051 SF | Vacant



**Photos display hypothetical buildout*



Hypothetical plan available on "turnkey" basis. 360 degree, unimpacted views of Jackson Square, Redwood Park, Coit Tower, and water.

Can be combined with floors 5, 6, and 8 for a total of 58,358 RSF

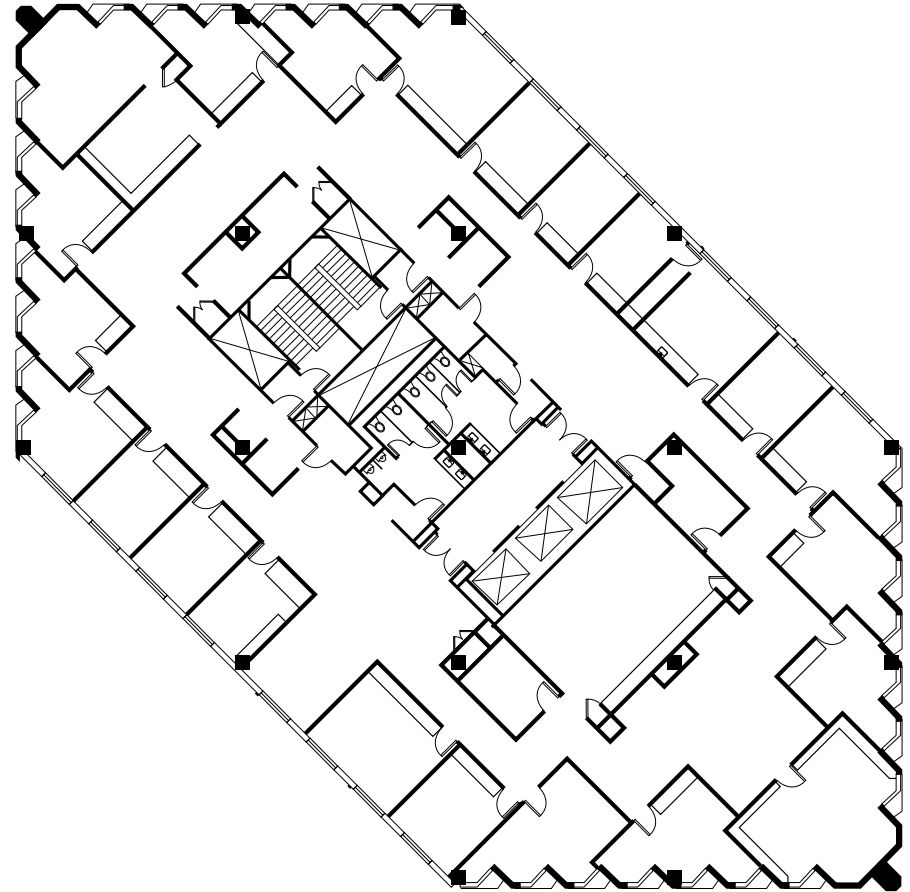
1 conference room | 5 meeting rooms | 7 offices

SUITE 800

±14,051 SF | Available 11/1/2026

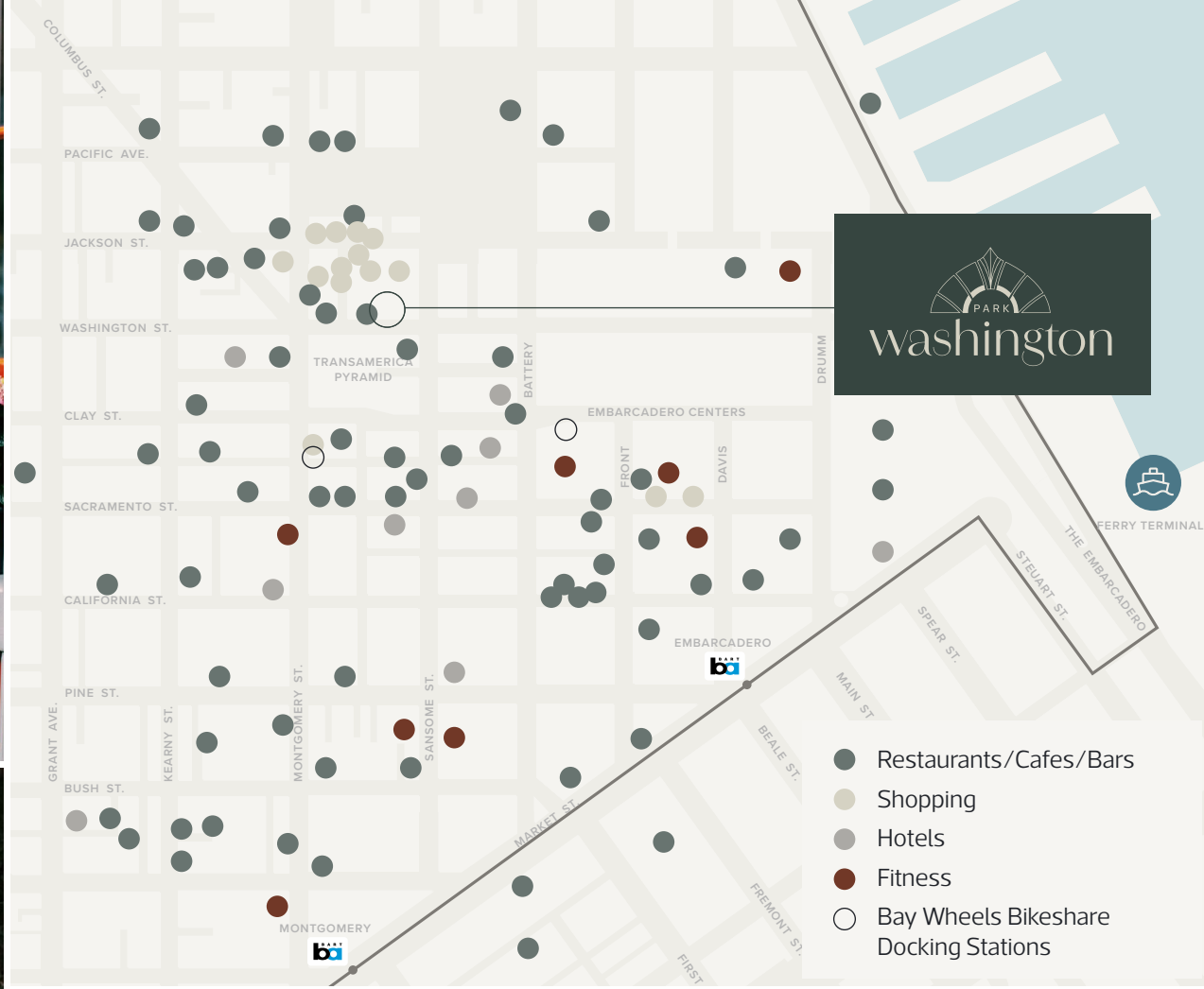


**Photos display hypothetical buildout*



Penthouse with 360 degree, unimpacted views of Jackson Square, Redwood Park, Coit Tower, and water.

Can be combined with floors 5-7 for a total of 58,358 RSF



99

WALK SCORE

8

MIN WALK to
Montgomery BART/MUNI

100

TRANSIT SCORE

8

MIN WALK to
Embarcadero BART/MUNI

87

BIKE SCORE

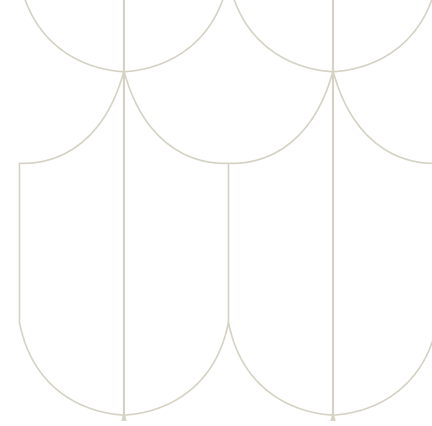
11

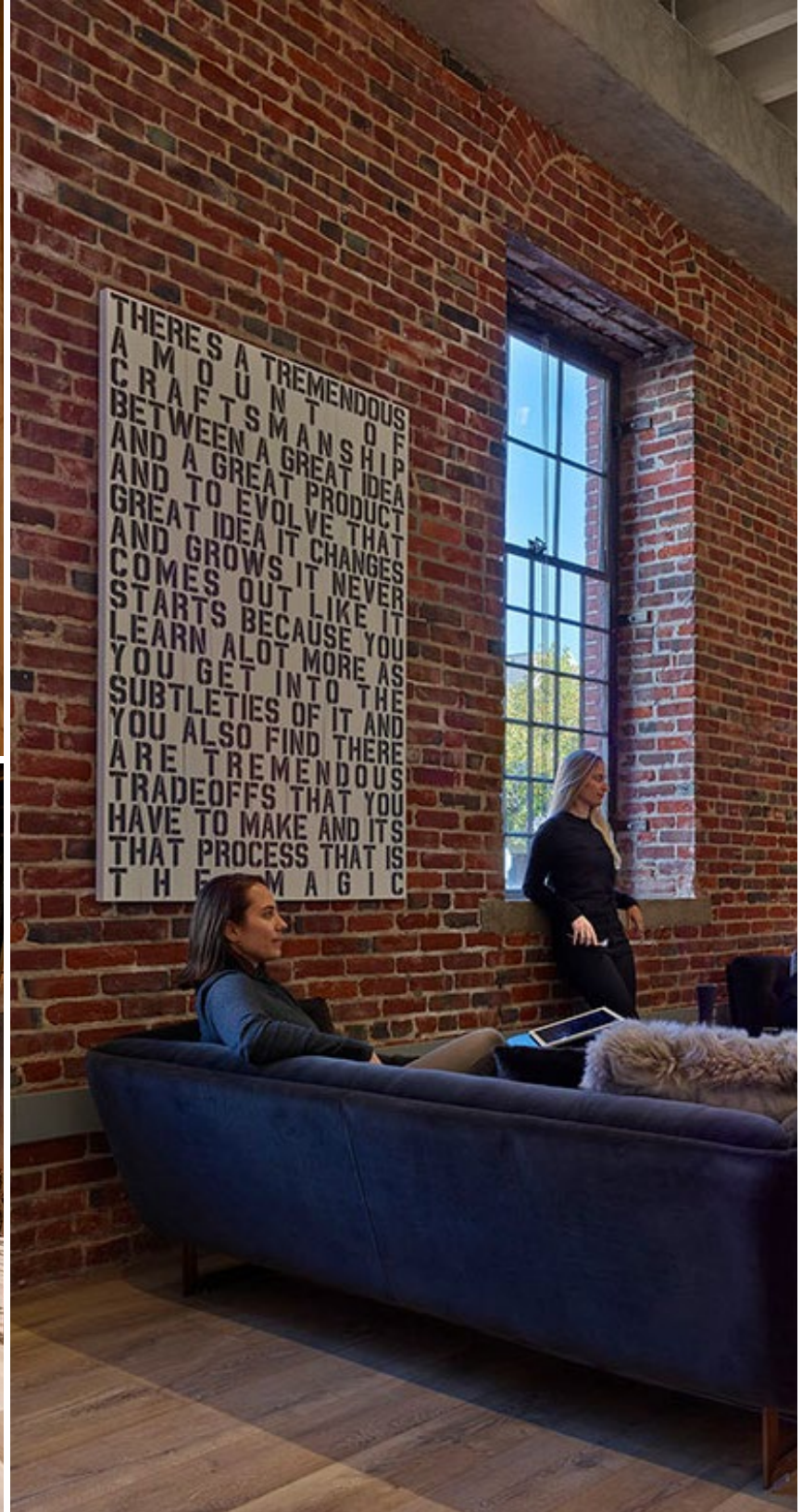
MIN WALK to the
Ferry Building

A Detailed Look at Jackson Square

A charming blend of old and new, Jackson Square's tree-lined streets and quaint alleys provide a unique backdrop for a diverse community of businesses. The area has grown to host an eclectic mix of high-end boutiques, inviting restaurants, and creative design firms.

In recent years, Jackson Square has quietly become an attractive destination for emerging tech companies and venture capital firms. These businesses are drawn to the neighborhood's distinctive character and the inspiring spaces it offers – a refreshing alternative to conventional office environments.







About Brick & Timber Collective

Brick & Timber Collective is a San Francisco-based real estate development firm focused on the acquisition, renovation, and repositioning of properties uniquely suited for the venture capital, private equity, and startup community. Brick & Timber's portfolio contains many of San Francisco's most historically significant buildings. The firm focuses on creating spaces that honor the historic character of the original structure while simultaneously utilizing architectural materials and technology to produce an avant-garde experience.



PARK
washington

Dan Johnson
Lic. 01919201
415.265.5216
dan.johnson@jll.com

John Diepenbrock
Lic. 01911627
916.296.7185
john.diepenbrock@jll.com

Tom Doupe
Lic. 01921218
415.395.4933
tom.doupe@jll.com



Jones Lang LaSalle Brokerage, Inc.
License #01856260

Although information has been obtained from sources deemed reliable, JLL does not make any guarantees, warranties or representations, express or implied, as to the completeness or accuracy as to the information contained herein. Any projections, opinions, assumptions or estimates used are for example only. There may be differences between projected and actual results, and those differences may be material. JLL does not accept any liability for any loss or damage suffered by any party resulting from reliance on this information. If the recipient of this information has signed a confidentiality agreement with JLL regarding this matter, this information is subject to the terms of that agreement. ©2026 Jones Lang LaSalle Brokerage, Inc. All rights reserved.