



# For lease

20,535 - 212,358 SF of industrial warehouse space

8800 E Adamo Dr  
Tampa, FL 33619



# Building highlights

|                     |  |
|---------------------|--|
| <b>Space A</b>      | 59,145 SF  |
| <b>Space B</b>      | 21,160 SF  |
| <b>Space C</b>      | 132,053 SF   |
| <b>Loading</b>      | Dock-high doors  |
| <b>Clear height</b> | 22'  |
| <b>Sprinklers</b>   | Sprinklered  |
| <b>Lighting</b>     | LED  |
| <b>Highlights</b>   | Spaces are contiguous and can be demised for ultimate flexibility.                             |
| <b>Location</b>     | Adamo frontage, excellent and immediate access to US Hwy 301, I-75, Selmon Expressway, and I-4 |



**John Dunphy** CCIM, SIOR  
Executive Managing Director  
johnc.dunphy@jll.com  
+1 813 387 1312

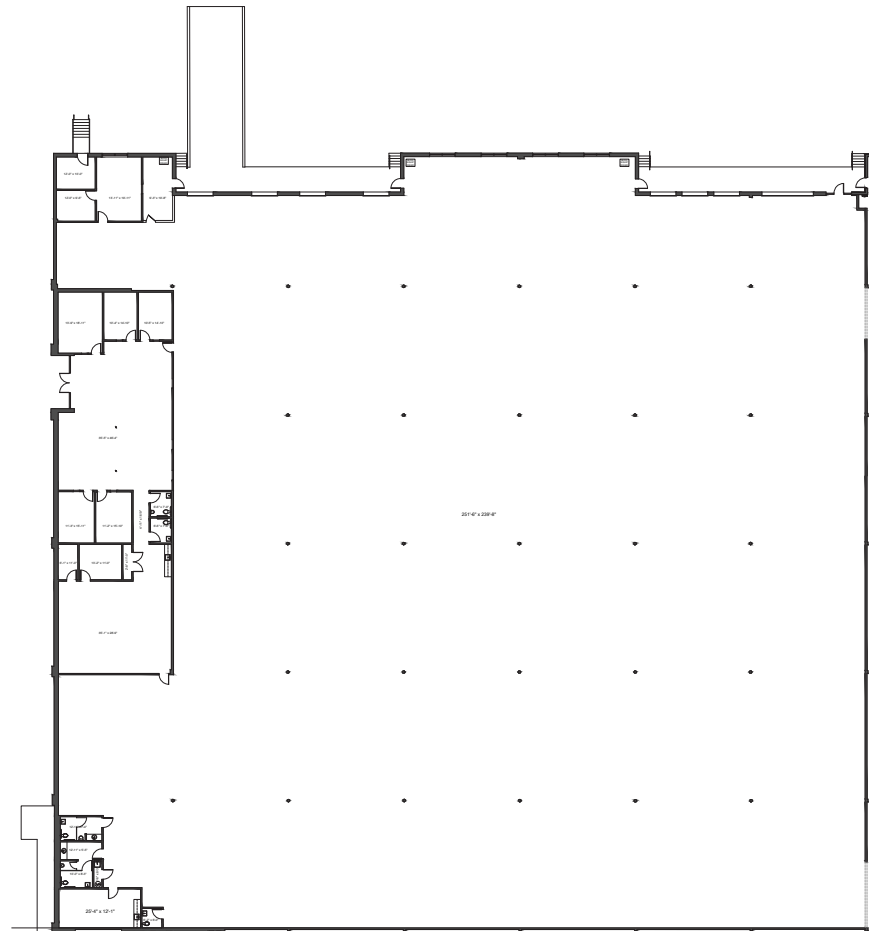
**Peter Cecora** SIOR  
Executive Managing Director  
peter.cecora@jll.com  
+1 813 387 1297



8800 E Adamo Dr

# Space A

|                     |  |
|---------------------|--|
| <b>Size</b>         | 59,145 SF                              |
| <b>Office</b>       | 8,800                                  |
| <b>Construction</b> | Masonry                                |
| <b>Loading</b>      | Eigh (8) dock-high doors, one (1) ramp |
| <b>Clear height</b> | 22'                                    |
| <b>Sprinklers</b>   | Sprinklered                            |
| <b>Lighting</b>     | LED                                    |



**John Dunphy** CCIM, SIOR  
Executive Managing Director  
johnc.dunphy@jll.com  
+1 813 387 1312

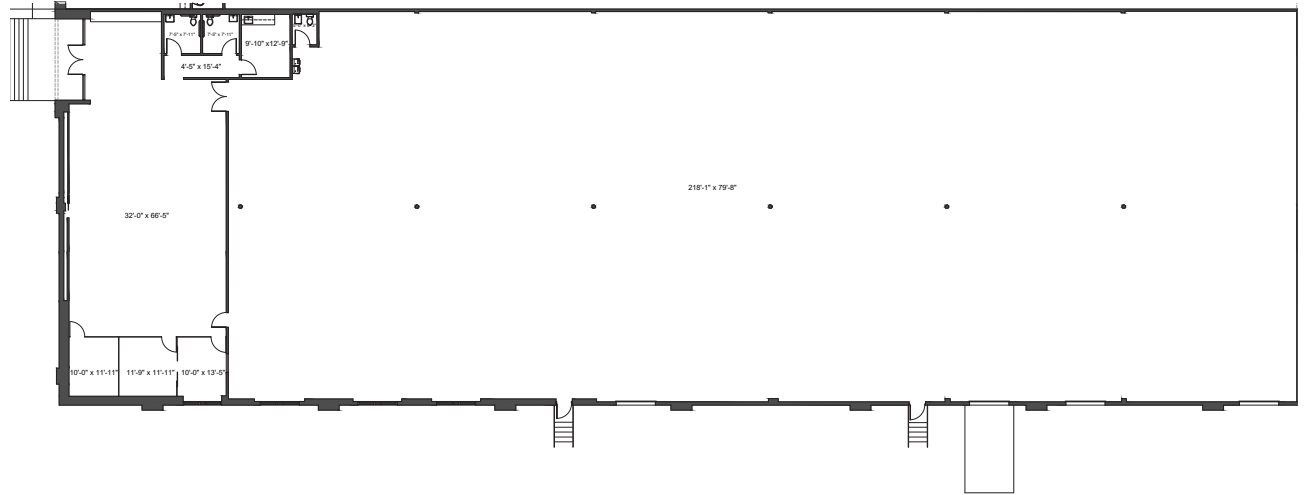
**Peter Cecora** SIOR  
Executive Managing Director  
peter.cecora@jll.com  
+1 813 387 1297



8800 E Adamo Dr

## Space B

|                     |                           |
|---------------------|---------------------------|
| <b>Size</b>         | 21,160 SF                 |
| <b>Office</b>       | ± 1,500 SF                |
| <b>Construction</b> | Masonry                   |
| <b>Loading</b>      | Three (3) dock-high doors |
| <b>Clear height</b> | 22'                       |
| <b>Sprinklers</b>   | Sprinklered               |
| <b>Lighting</b>     | LED                       |



**John Dunphy** CCIM, SIOR  
Executive Managing Director  
johnc.dunphy@jll.com  
+1 813 387 1312

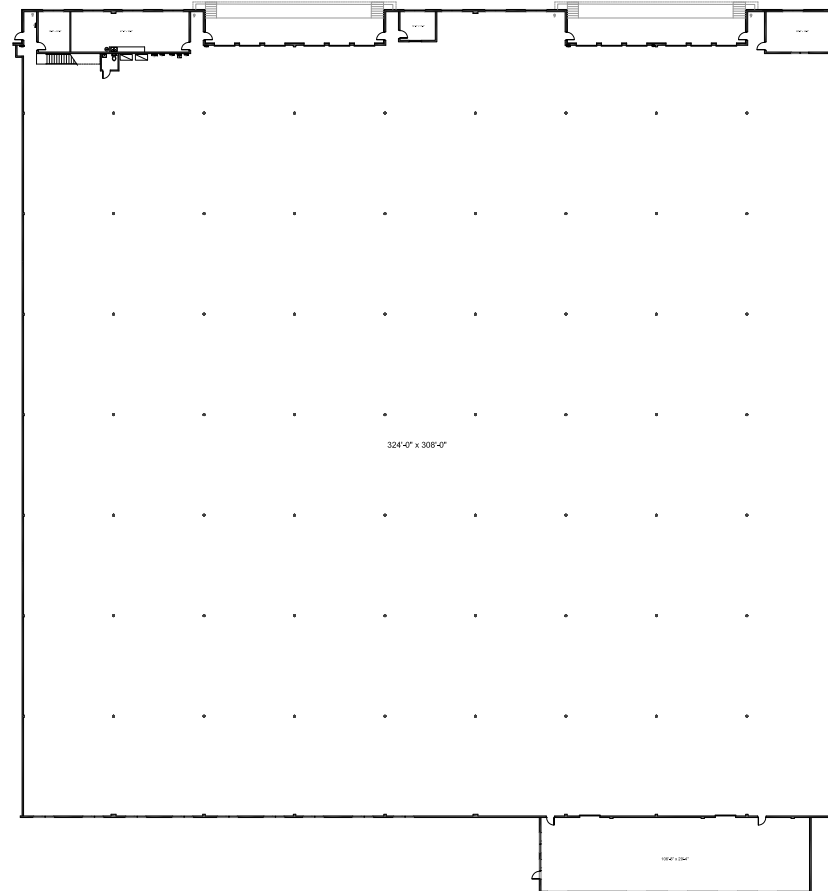
**Peter Cecora** SIOR  
Executive Managing Director  
peter.cecora@jll.com  
+1 813 387 1297



8800 E Adamo Dr

# Space C

|                     |                         |
|---------------------|-------------------------|
| <b>Size</b>         | 132,053 SF              |
| <b>Office</b>       | 3,245 SF                |
| <b>Construction</b> | Masonry                 |
| <b>Loading</b>      | Six (6) dock-high doors |
| <b>Clear height</b> | 22'                     |
| <b>Sprinklers</b>   | Sprinklered             |
| <b>Lighting</b>     | LED                     |



**John Dunphy** CCIM, SIOR  
Executive Managing Director  
johnc.dunphy@jll.com  
+1 813 387 1312

**Peter Cecora** SIOR  
Executive Managing Director  
peter.cecora@jll.com  
+1 813 387 1297



8800 E Adamo Dr

# Location



**John Dunphy** CCIM, SIOR  
*Executive Managing Director*  
johnc.dunphy@jll.com  
+1 813 387 1312

**Peter Cecora** SIOR  
*Executive Managing Director*  
peter.cecora@jll.com  
+1 813 387 1297



Although information has been obtained from sources deemed reliable, JLL does not make any guarantees, warranties or representations, express or implied, as to the completeness or accuracy as to the information contained herein. Any projections, opinions, assumptions or estimates used are for example only. There may be differences between projected and actual results, and those differences may be material. JLL does not accept any liability for any loss or damage suffered by any party resulting from reliance on this information. If the recipient of this information has signed a confidentiality agreement with JLL regarding this matter, this information is subject to the terms of that agreement. ©2025 Jones Lang LaSalle Brokerage, Inc. All rights reserved.