



Innovation Corporate Center

15333 Avenue of Science Drive, San Diego, CA



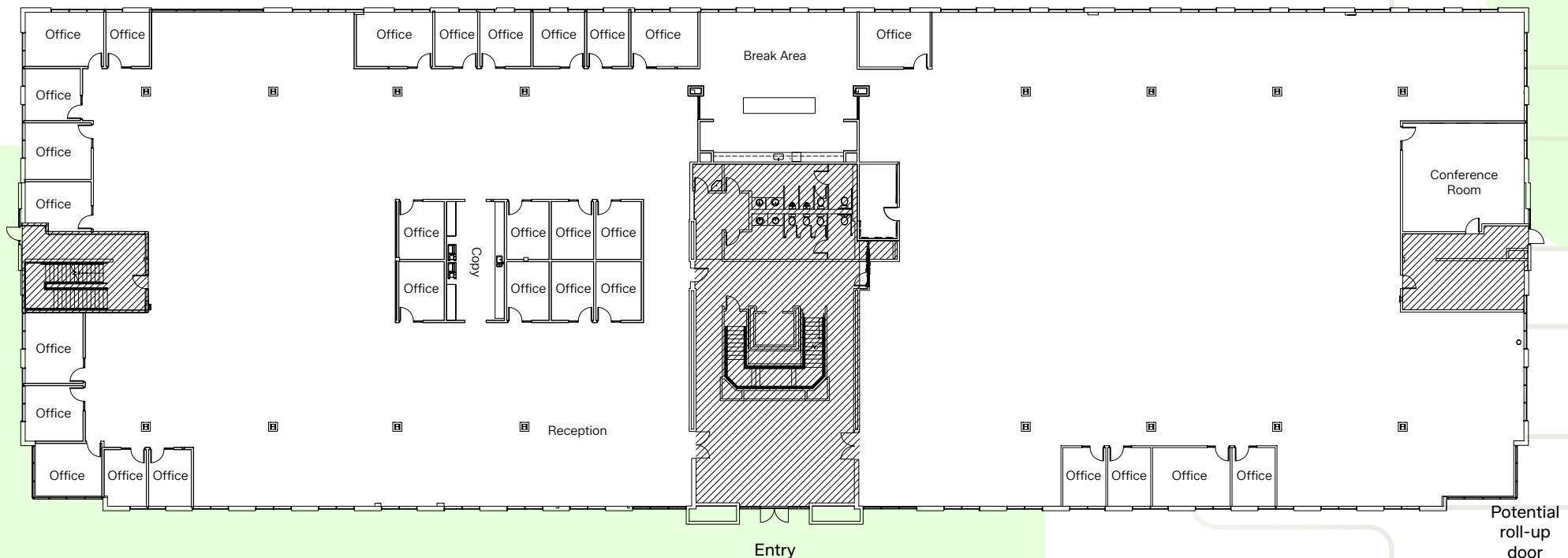
Availability

Building - Suite	RSF	Details
15333 – Suite 100	±36,617	Available now. Prominent double-door entrance directly off lobby with 29 private offices, Conference room, Storage room, IT room, and Break area. Partial exposed ceiling with polished concrete and remainder of the space is 11' drop ceilings. Potential to add loading.
15333 – Suite 250	±8,441	Available now. 4 Private offices, 2 Meeting rooms, IT room, Break area, and open cube space. 11' ceilings, double-door glass entrance, and ample natural light.

15333 Avenue of Science

Suite 100 | 36,617 RSF

- 29 private offices
- Conference room
- Storage room
- IT room
- Break area
- Prominent double-door entrance directly off lobby
- Partial exposed ceiling with polished concrete and remainder of the space is 11' drop ceilings
- Potential to add load loading



15333 Avenue of Science

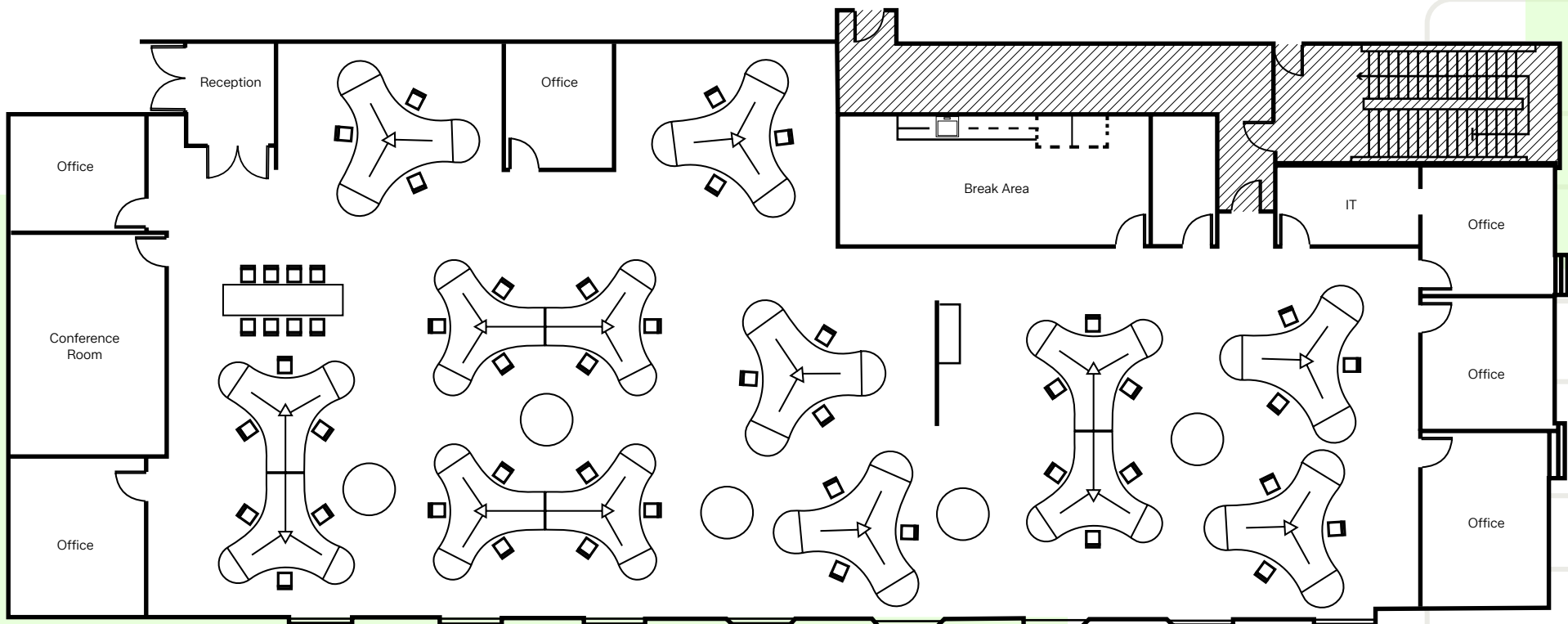
Suite 100 | 36,617 RSF



15333 Avenue of Science

Suite 250 | 8,441 RSF

- 6 private offices
- 2 conference rooms
- IT room
- Break area
- Open office area
- 11' ceilings
- Double-door glass entrance and ample natural light



15333 Avenue of Science

Suite 250 | 8,441 RSF



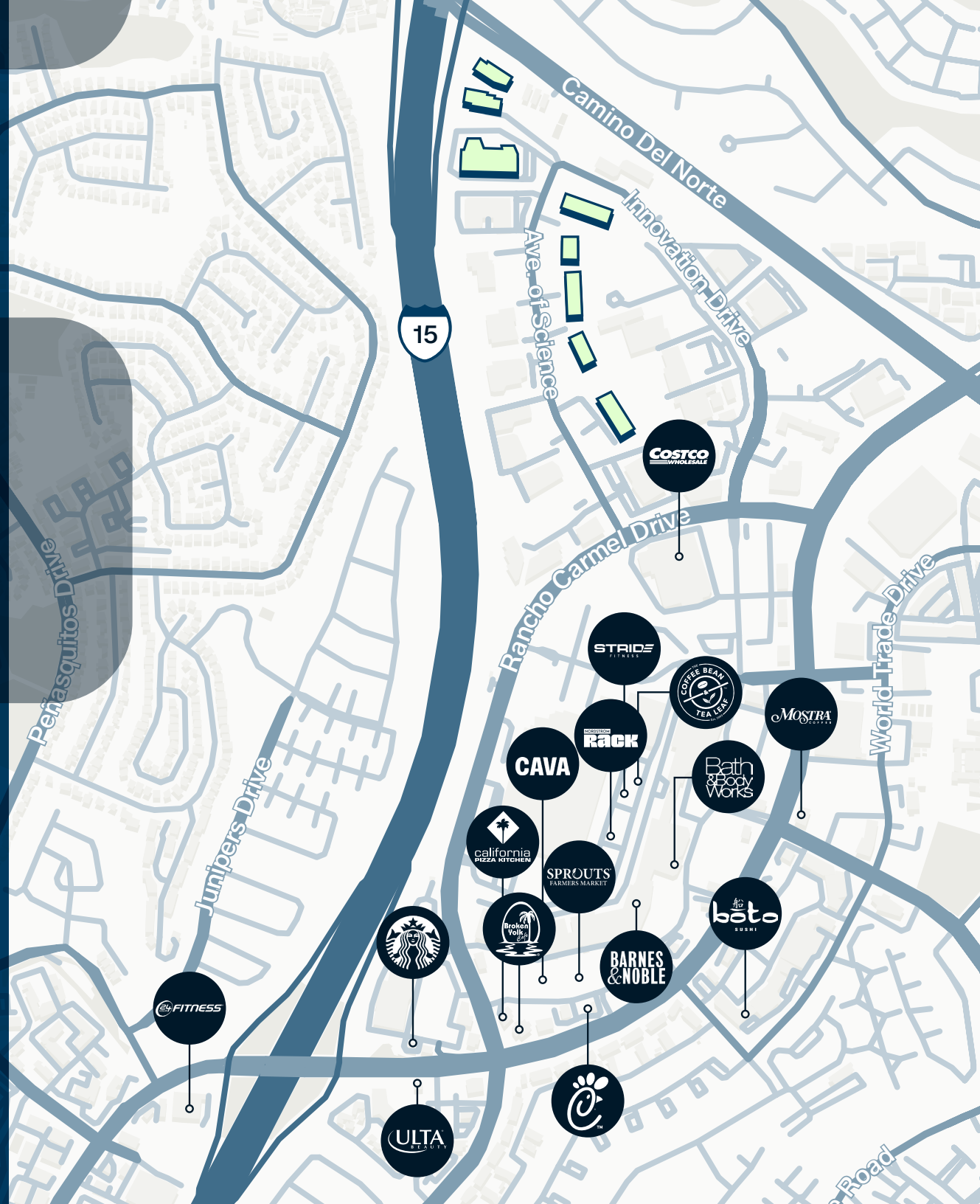
Area Amenities

Additional Restaurants

- Best Pizza & Brew
- Café Luna
- California Fish Grill
- Chick-fil-A
- Chipotle
- Delhi Kitchen
- El Pollo Loco
- Epic Wings
- Greek Corner Café
- In-N-Out
- Islands Restaurant
- L&L Hawaiian Barbeque
- Olive Garden
- Panera Bread
- Sushi Gato
- The Kebab Shop
- The Stand
- Urban Thai Kitchen
- Which Which
- Yesenia's Mexican Food

Additional Services/Retail

- 24 Hour Fitness
- Bank of America's
- Chase Bank
- F45 Training
- Home Depot
- Marshalls
- Petco
- Ralphs
- Sephora
- Target
- Trader Joe's
- USPS
- Valvoline
- Wells Fargo





Innovation Corporate Center

Tim Olson

+1 858 410 1253

tim.olson@jll.com

RE license #01364117

Greg Moore

+1 858 410 6367

greg.moore@jll.com

RE license #02068852

Carly Ross

+1 858 352 2911

carly.ross@jll.com

RE license #02157346

Although information has been obtained from sources deemed reliable, neither Owner nor JLL makes any guarantees, warranties or representations, express or implied, as to the completeness or accuracy as to the information contained herein. Any projections, opinions, assumptions or estimates used are for example only. There may be differences between projected and actual results, and those differences may be material. The Property may be withdrawn without notice. Neither Owner nor JLL accepts any liability for any loss or damage suffered by any party resulting from reliance on this information. If the recipient of this information has signed a confidentiality agreement regarding this matter, this information is subject to the terms of that agreement. ©2026. Jones Lang LaSalle IP, Inc. All rights reserved.

