



 **JLL** SEE A BRIGHTER WAY

# For Lease

**101 S. Main Street**  
Ann Arbor, Michigan

## Property Highlights

- 4,259 - 9,007 SF available
- Located in the heart of downtown Ann Arbor
- Excellent space for office or retail
- Close proximity to freeways and U of M campus

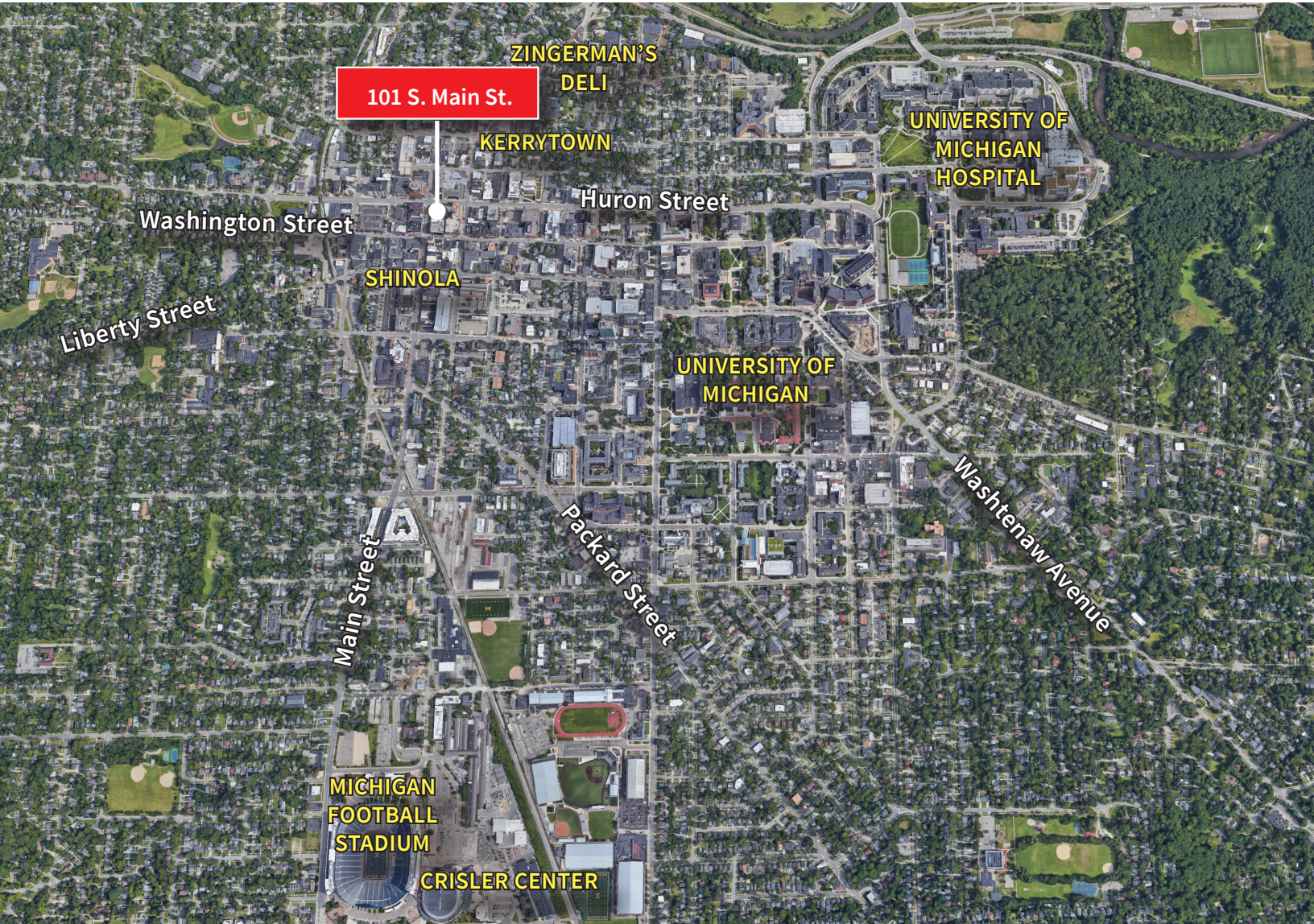
**Asking rent: \$29.50 SF MG + Utilities & Janitorial**

**JLL**

**Neal Warling**

neal.warling@jll.com

+1 734 769 3201



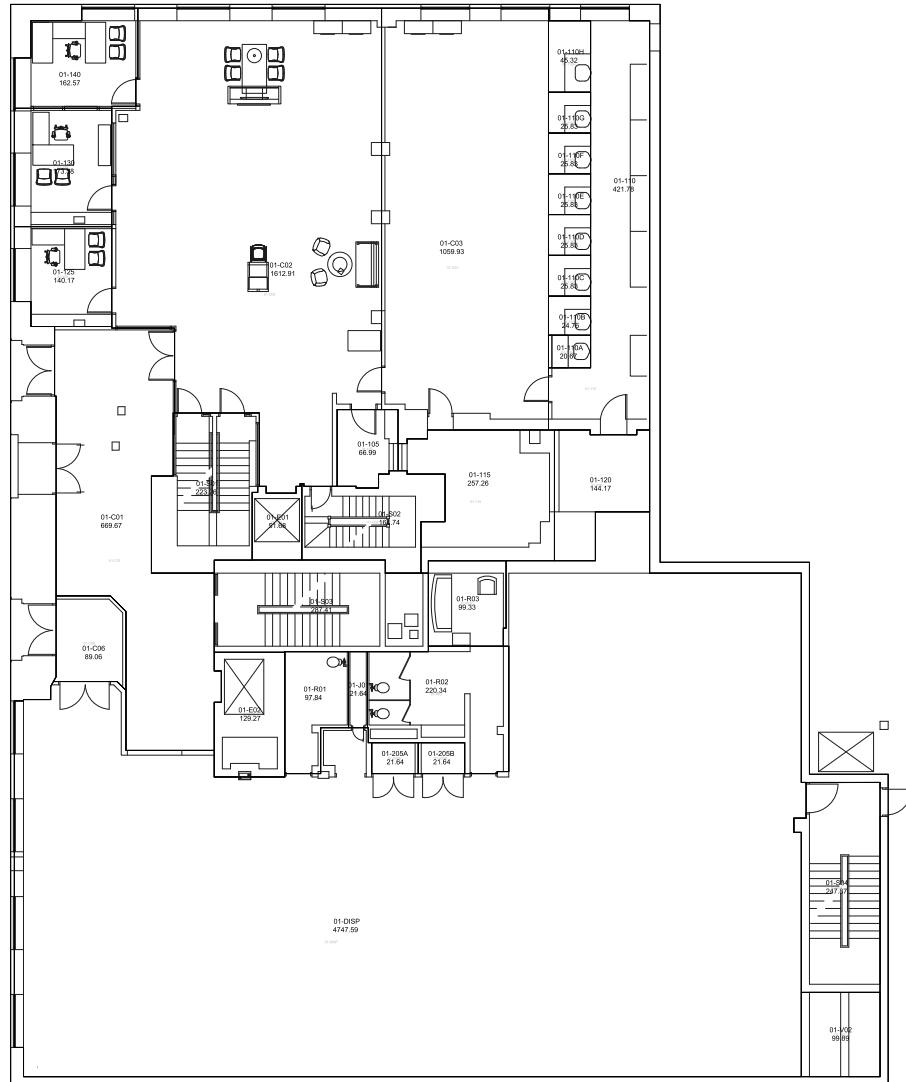
**JLL**

**Neal Warling**

neal.warling@jll.com

+1 734 769 3201

**First Floor Plan**  
**9,007 SF**



**JLL**

**Neal Warling**

neal.warling@jll.com

+1 734 769 3201