

25 S
HANFORD
STREET

Entire Standalone Warehouse Building

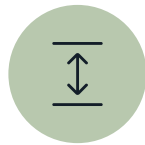
34,997 SF Available

25 S Hanford Street, Seattle, WA 98134





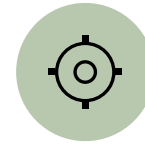
Mix of Office & Warehouse Space



Clear Height:
15'



Total Loading Doors:
5 Dock-high



Zoning:
Maritime zoning



34,997 SF Total Available



Tenant Signage:
Prominent signage available



Directly adjacent to the Port of Seattle



Excellent Truck maneuvering and parking with close-in location

SUITE 25

▲ NORTH

16,321 SF TOTAL
4,743 SF OFFICE
11,578 SF WAREHOUSE
AVAILABLE NOW

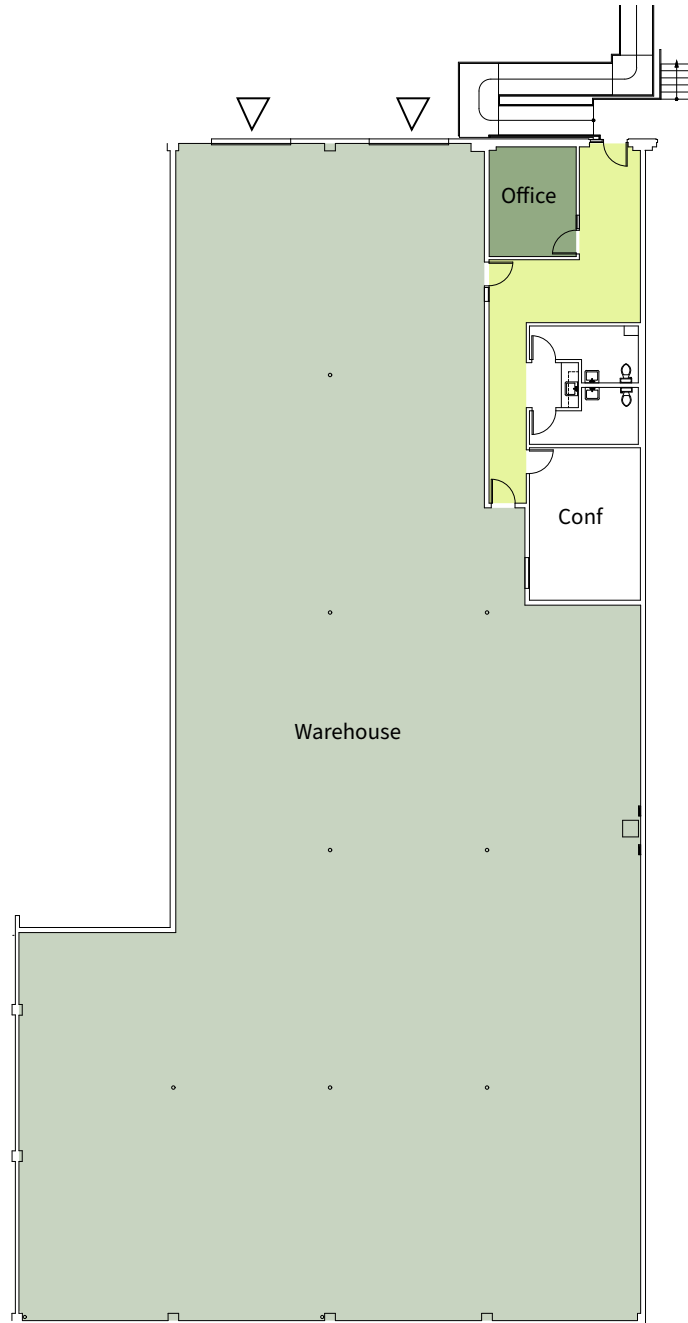


- Office
- Work Area
- Warehouse
- ▽ Dock-high Loading

SUITE 27

9,907 SF TOTAL
1,093 SF OFFICE
8,814 SF WAREHOUSE
AVAILABLE NOW

▲ NORTH



Office



Work Area



Warehouse



Dock-high Loading

SUITE 29

8,769 SF TOTAL

1,057 SF OFFICE

7,712 SF WAREHOUSE

AVAILABLE WITH 30 DAYS' NOTICE



▲ NORTH



Office



Work Area



Warehouse



Dock-high Loading

SUITES 25 + 27

26,228 SF TOTAL
5,836 SF OFFICE
20,392 SF WAREHOUSE
AVAILABLE NOW

▲ NORTH

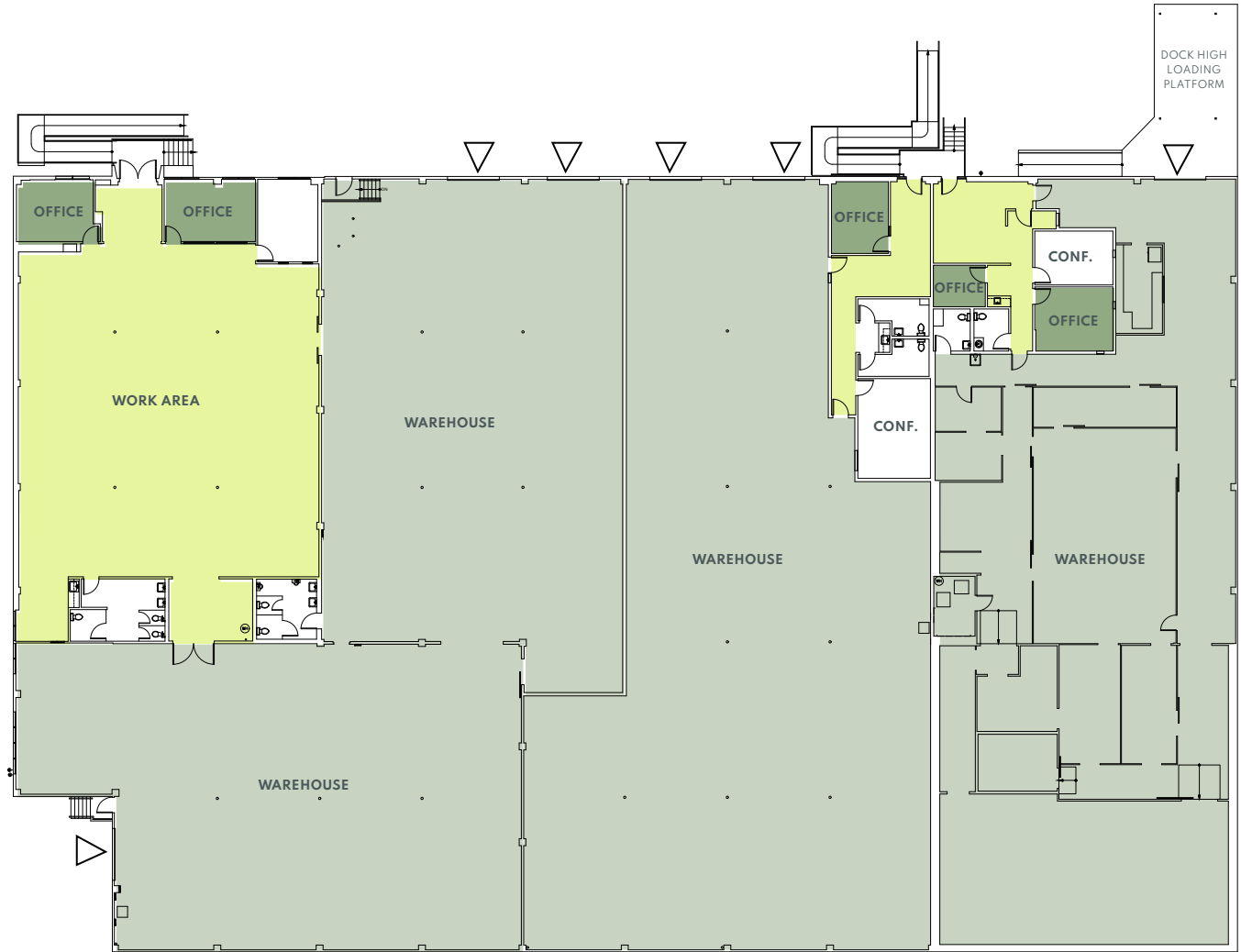


- Office
- Work Area
- Warehouse
- ▽ Dock-high Loading

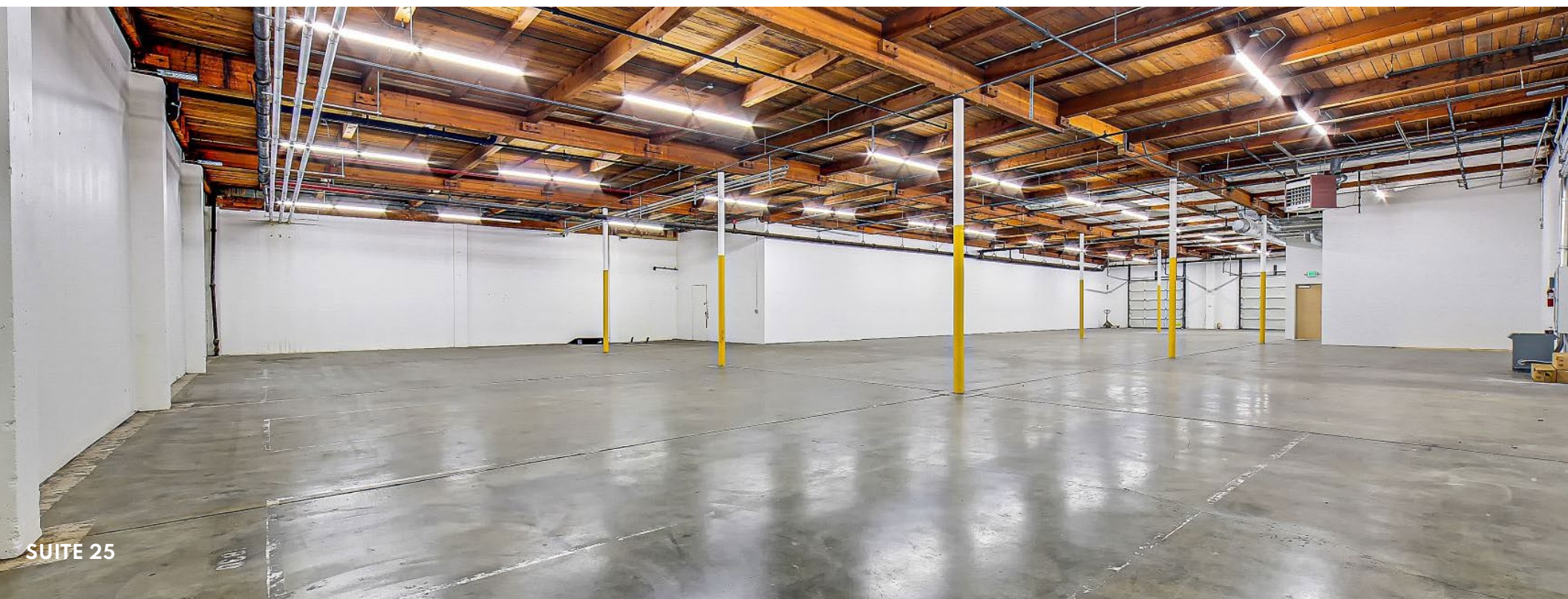
SUITES 25+27+29

▲ NORTH

34,997 SF TOTAL
6,893 SF OFFICE
28,104 SF WAREHOUSE
**AVAILABLE WITH
30 DAYS' NOTICE**



■ Office ■ Work Area ■ Warehouse ▽ Dock-high Loading





DRIVE TIMES

0.5 miles
Port of Seattle

2 Miles
Downtown Seattle

11 Miles
SeaTac Airport

12 Miles
Downtown Bellevue

25 S HANFORD STREET

Jake Bos

jake.bos@jll.com
+1 206 384 3814

Bailey Hallis

bailey.hallis@jll.com
+1 206 777 5203



Although information has been obtained from sources deemed reliable, JLL does not make any guarantees, warranties or representations, express or implied, as to the completeness or accuracy as to the information contained herein. Any projections, opinions, assumptions or estimates used are for example only. There may be differences between projected and actual results, and those differences may be material. JLL does not accept any liability for any loss or damage suffered by any party resulting from reliance on this information. If the recipient of this information has signed a confidentiality agreement with JLL regarding this matter, this information is subject to the terms of that agreement. ©2026 Jones Lang LaSalle Brokerage, Inc. All rights reserved.