

# For lease

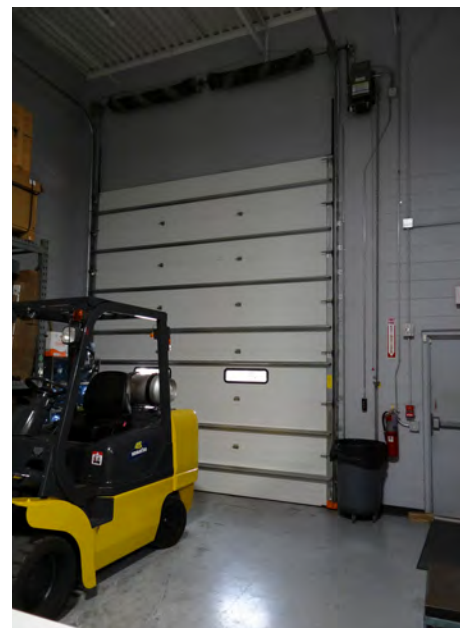
Metropointe Commerce Center

9875 18th St N, St. Petersburg, FL 33716



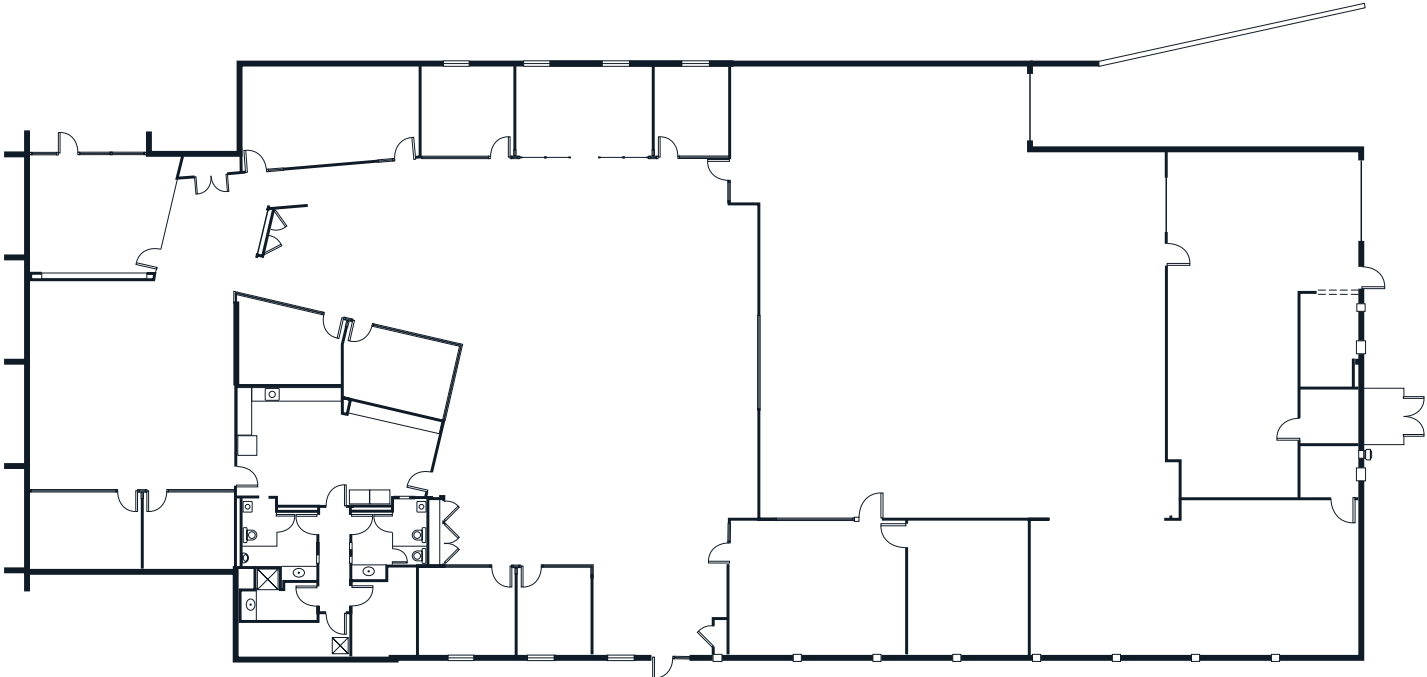
## Property highlights

- Available Now
- 16,715 SF standalone building
- +10,036 SF office
- +6,679 SF air-conditioned warehouse
- Concrete block construction with red brick facade
- 1 grade-level door & 1 truck well
- 18' clear height
- 3-phase power
- Sprinklered
- I-275 access: 1 mile
- U.S. Highway 19 access: 2.5 miles
- Gandy Blvd. access: 0.25 miles



# Floor plan

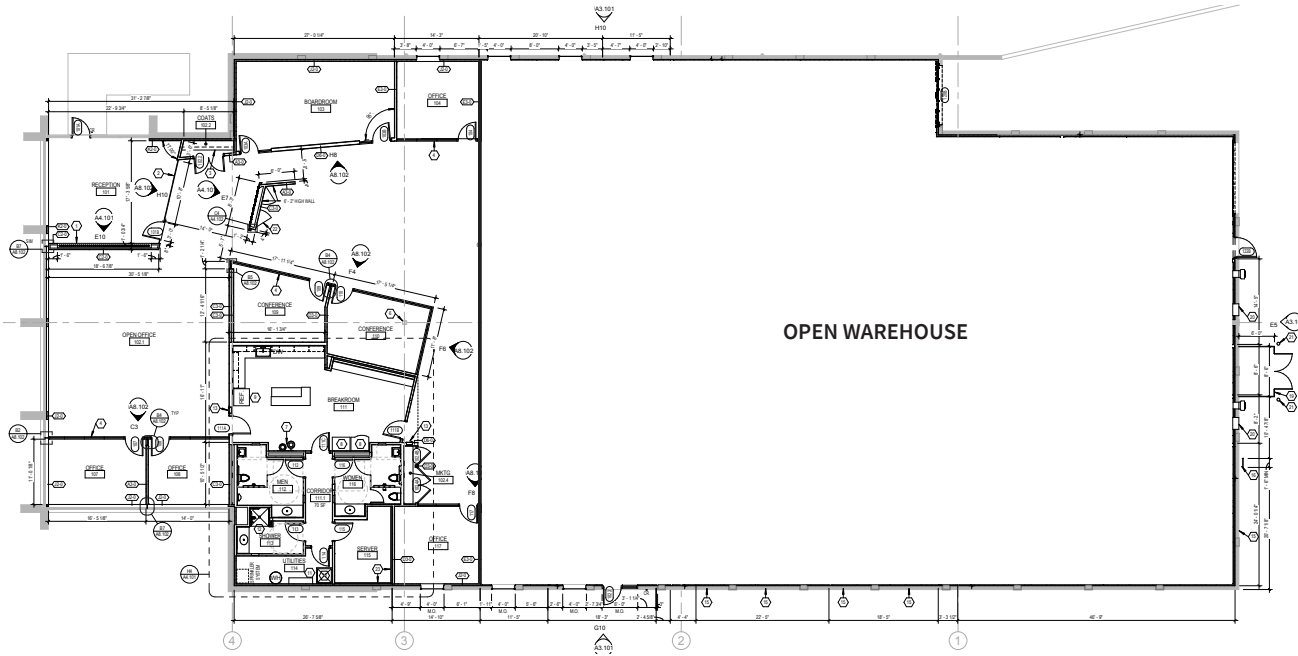
**16,715 SF**



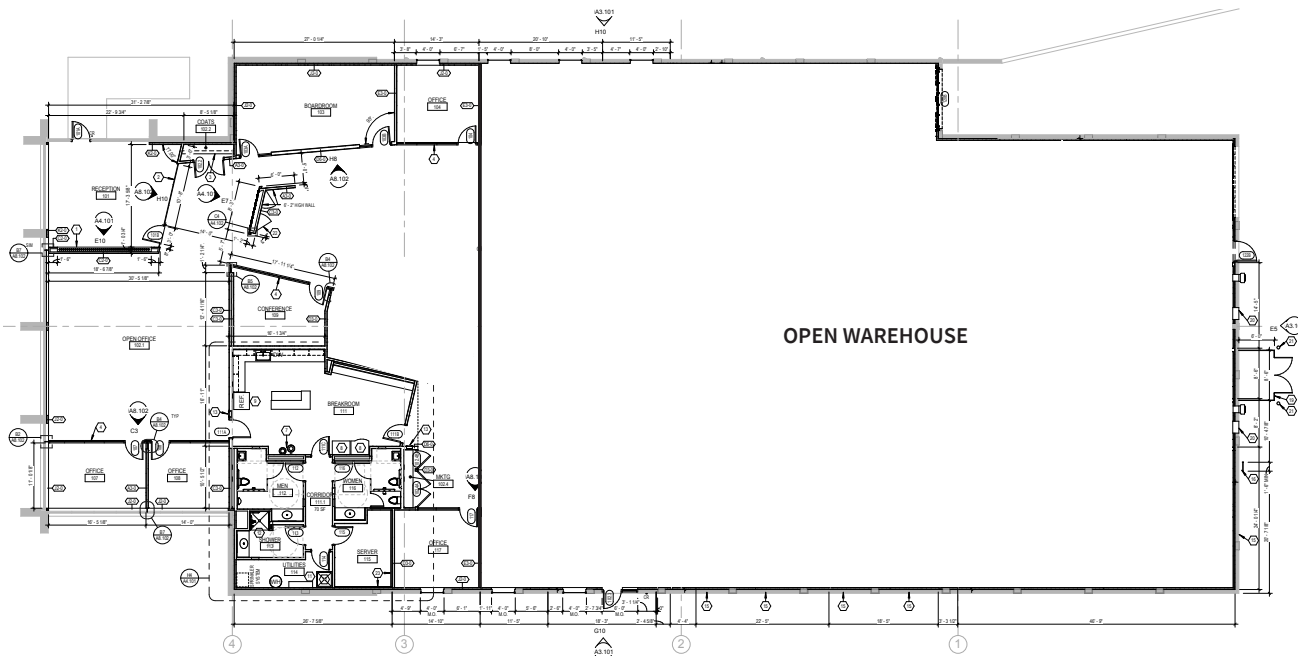
# Alternative floor plan options

**16,715 SF**

## Option 1



## Option 2





### Ideal location

Metropointe Commerce Center is located just 1.0 mile from Interstate 275, 0.25 miles from Gandy Boulevard and 2.5 miles from U.S. Highway 19. Located approximately five miles south of the St. Petersburg–Clearwater Airport and less than 20 minutes from Tampa International Airport, this business park allows for easy domestic and international travel. The central location of this park and access to both the Howard Franklin and Gandy bridges allows businesses to draw an employment base from both sides of Tampa bay.

### Contact:

**John C. Dunphy, CCIM, SIOR**  
*Executive Managing Director*  
johnc.dunphy@jll.com  
+1 813 387 1312