

FOR LEASE



2349 & 2351 N Watney Way | Solano Business Park | Fairfield

One Unit Remaining! ±4,090 SF Industrial Suite Available

Jones Lang LaSalle Brokerage, Inc.
Real Estate Lic#01856260



THE PROPERTY

2349 & 2351 N Watney Way | Fairfield, CA

- **±72,200 SF in two light industrial buildings**
 - 2349 North Watney Way: ±25,690 SF building
 - 2351 North Watney Way: ±45,521 SF building
- **Extensive glass line**
- **18'-20' warehouse clear height**
- **Dock and grade-level loading**
- **Power**
 - 2349 N Watney: 1,200amps 120/208v, 3-phase
 - 2351 N Watney: 2,000amps, 120/208v, 3-phase
- **Immediate access to Hwy 12, I-80 and within 4 miles to I-680**
- **Building signage**



2349 & 2351
N WATNEY WAY

**Centrally located at the intersection of I-80 and Hwy 12
within the prestigious Solano Business Park**



Solano Business Park is
located midpoint between San
Francisco and Sacramento



One of the premier distribution
and manufacturing hubs in the
San Francisco Bay Area



12 miles to the Napa
Valley wine country



Abundant water and
sewer capacity

STRATEGIC LOCATION

2349 & 2351
N WATNEY WAY



Saxco International

SAVER GLASS

berlin



Guittard
CHOCOLATE COMPANY

IRON MOUNTAIN

CHADBOURNE RD



Warehouses Inc.

VICI

CAYMUS VINEYARDS

AIRSTREAM

Calbee

COURAGE DR

WB
WAREHOUSING & LOGISTIC
MANAGEMENT & PACKAGING SOLUTIONS

amcor

MEYER CORPORATION



1/4 mile



1/2 mile

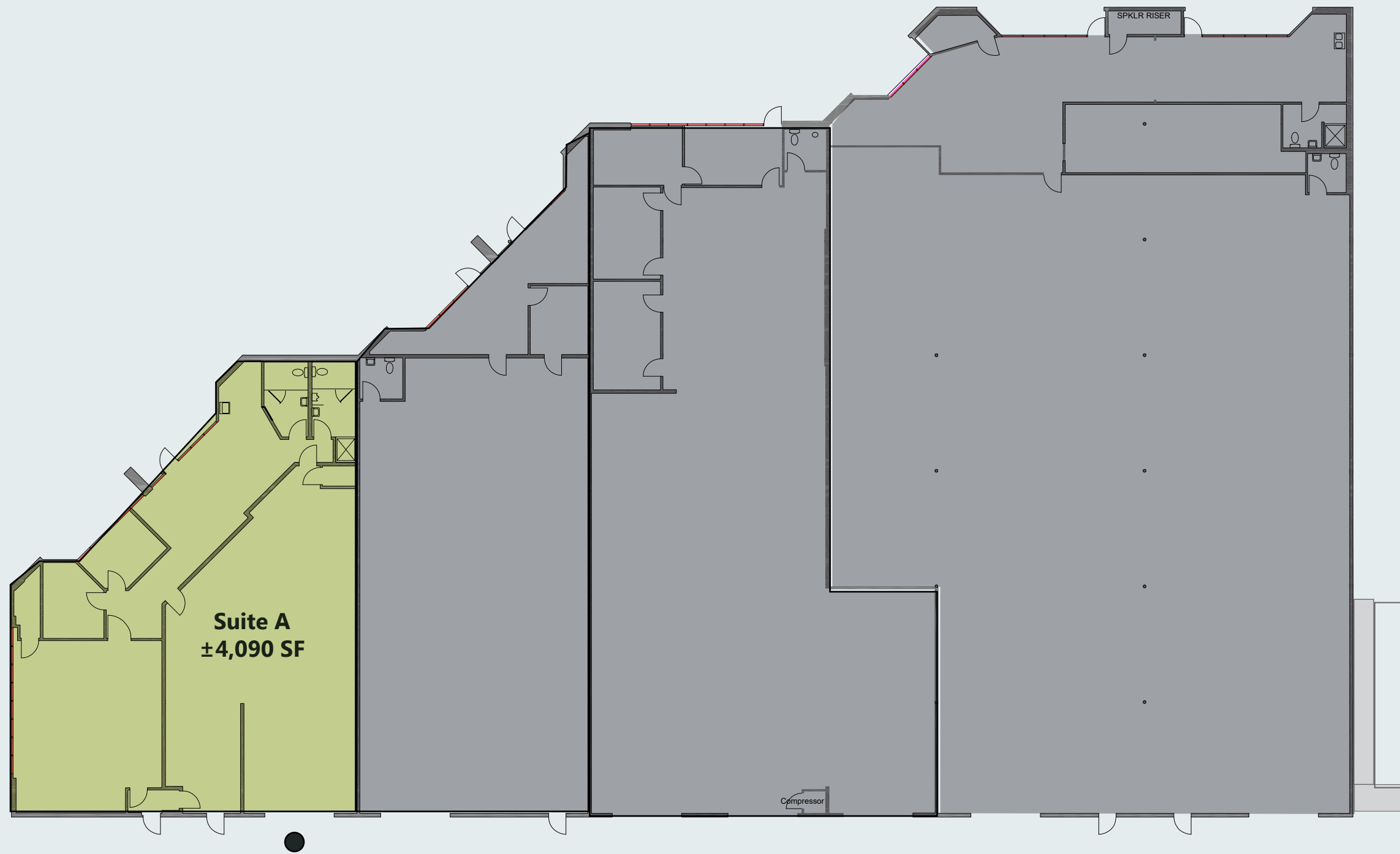


4 miles

TRICORBRAUN

CORDELIA RD

Ankaa



Available

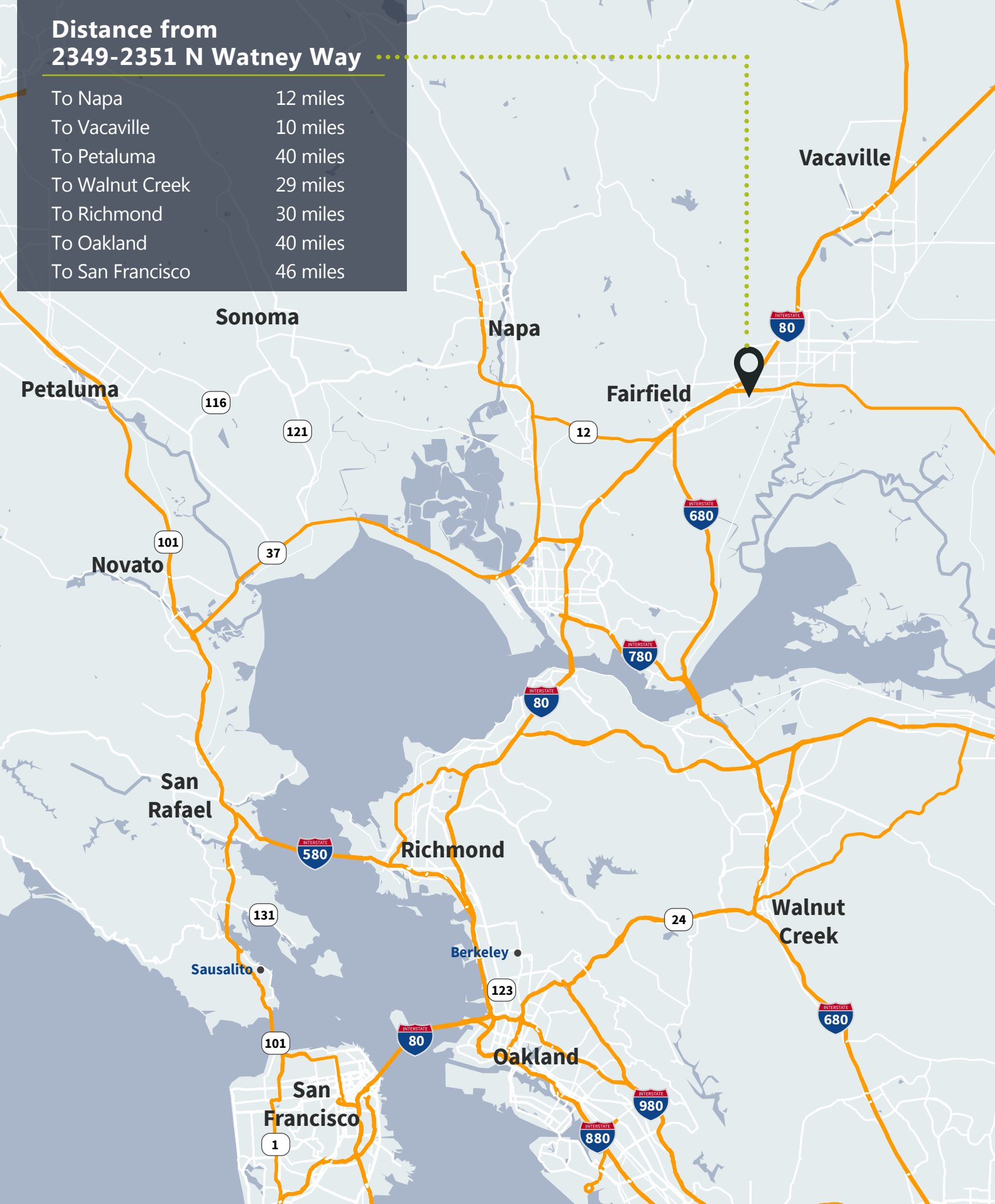
Suite A | ±4,090 SF

- 1 grade-level door
- ±18' clear height
- Open office space
- 2 private offices
- Break room and 2 restrooms

● GRADE-LEVEL DOOR

Distance from 2349-2351 N Watney Way

To Napa	12 miles
To Vacaville	10 miles
To Petaluma	40 miles
To Walnut Creek	29 miles
To Richmond	30 miles
To Oakland	40 miles
To San Francisco	46 miles



For Information Contact:

Chris Neeb
chris.neeb@jll.com
+1 707 495 7777
License #01324612

Matt Bracco
matt.bracco@jll.com
+1 925 200 3537
License #01185434

Glen Dowling
glen.dowling@jll.com
+1 415 299 6868
License #00890450



Jones Lang LaSalle Brokerage, Inc. Real Estate Lic#01856260

Jones Lang LaSalle Brokerage, Inc. Real Estate License #: 01856260 Although information has been obtained from sources deemed reliable, neither Owner nor JLL makes any guarantees, warranties or representations, express or implied, as to the completeness or accuracy as to the information contained herein. Any projections, opinions, assumptions or estimates used are for example only. There may be differences between projected and actual results, and those differences may be material. The Property may be withdrawn without notice. Neither Owner nor JLL accepts any liability for any loss or damage suffered by any party resulting from reliance on this information. If the recipient of this information has signed a confidentiality agreement regarding this matter, this information is subject to the terms of that agreement.

©2026. Jones Lang LaSalle IP, Inc. All rights reserved.