 **JLL** SEE A BRIGHTER WAY

# For Sublease

1367 West Broadway  
Vancouver, BC  
Suite 420 - 1,473 s.f.

## THE BUILDING & LOCATION

The building is conveniently located on the north side of West Broadway, between Birch and Hemlock Streets, offering excellent vehicular access to and from via major arterial routes. Tenants benefit from excellent views of the water, downtown and North Shore mountains. West Broadway offers a collection of various different retail amenities within walking distance to the building.

## BUILDING AMENITIES



End-of-trip  
Facilities



Bike  
Lockers



Storage



Underground  
& Visitor Parking

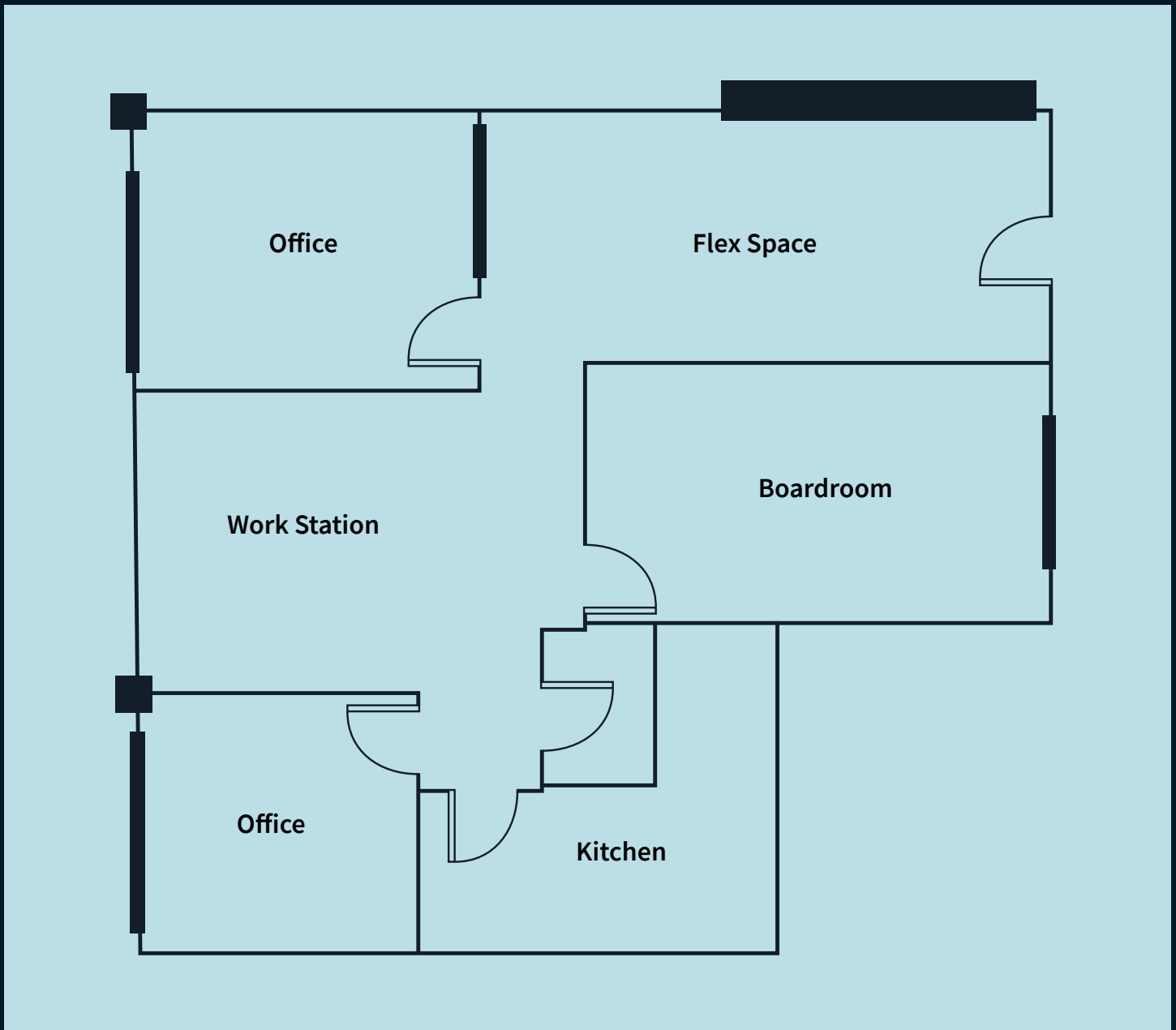


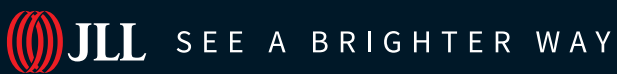
## SALIENT DETAILS

<b>Suite</b>	420	<b>Basic Rent</b>	Contact listing brokers
<b>Size</b>	1,473 s.f.	<b>Additional Rent</b>	\$22.55 psf/pa (2026)
<b>Availability</b>	May 1, 2026	<b>Parking</b>	1 stall per 500 s.f.
<b>Sublease Expiry</b>	October 30, 2026	<b>Furniture</b>	Available

## THE SUITE

The premises is nicely improved and configured with 2 private offices, a boardroom, copy/print room, kitchenette, reception area and open workspace with room for workstations.





**Corbin MacDonald\***

*Vice President*

[corbin.macdonald@jll.com](mailto:corbin.macdonald@jll.com)

+1 604 313 4572

**Graham Hyslop**

*Associate*

[graham.hyslop@jll.com](mailto:graham.hyslop@jll.com)

+1 604 354 7284

**Jack Graham**

*Associate*

[jack.graham@jll.com](mailto:jack.graham@jll.com)

+1 604 998 6057

Although information contained herein has been obtained from sources deemed reliable, the owner, Jones Lang LaSalle Real Estate Services, Inc. ("JLL Canada"), and/or their representatives, brokers or agents make no guarantees as to the accuracy of the information contained herein, and offer the property/portfolio without express or implied warranties of any kind. The property/portfolio may be withdrawn without notice. If the recipient of this information has signed a confidentiality agreement regarding this matter, this information is subject to the terms of that agreement.

© Copyright 2026 Jones Lang LaSalle IP, Inc. All rights reserved. | [jll.com](http://jll.com) | \*Personal Real Estate Corporation