

# 201 THIRD



**KILROY**



## PRIME SOMA OFFICE SPACE

Positioned at the gateway to Central SOMA, **201 Third Street** is a premier **12-story, Class A office building** offering **highly flexible ~29,000 RSF floor plates** in one of San Francisco's most dynamic and sought-after submarkets.

On-site amenities include **secure car and bike parking, 24/7 security, common-area Wi-Fi, Sextant Coffee Roasters and the upscale Brazilian steakhouse, Fogo De Chão**—offering the perfect setting for business lunches, client meetings, and after-work gatherings.

Surrounded by **over 150 top-rated restaurants, 10 hotels, and six major transit options within a six-block radius**, this location delivers unbeatable accessibility and convenience. **Just a 10-minute walk** from **Oracle Park, SF MoMA, Moscone Center, the Metreon, and San Francisco Centre**, the property places tenants at the heart of the city's cultural, business, and entertainment hubs.

Experience the best of SOMA at **201 Third Street**—where premium workspace meets unbeatable location.

## ACHIEVEMENTS

- WELL Health-Safety Rated
- LEED Gold, EBOM Energy Star Certified
- Fitwel Certified



Flexible, +29,000 SF floor plates



On-site dining options



Outdoor furnished deck



On-site parking



Bike storage and parking



24/7 security



# FRESHLY REIMAGINED FOR A PREMIUM EXPERIENCE



Renovated Lobby & Exterior



Sophisticated Hotel Inspired Lobby



Furnished Outdoor deck

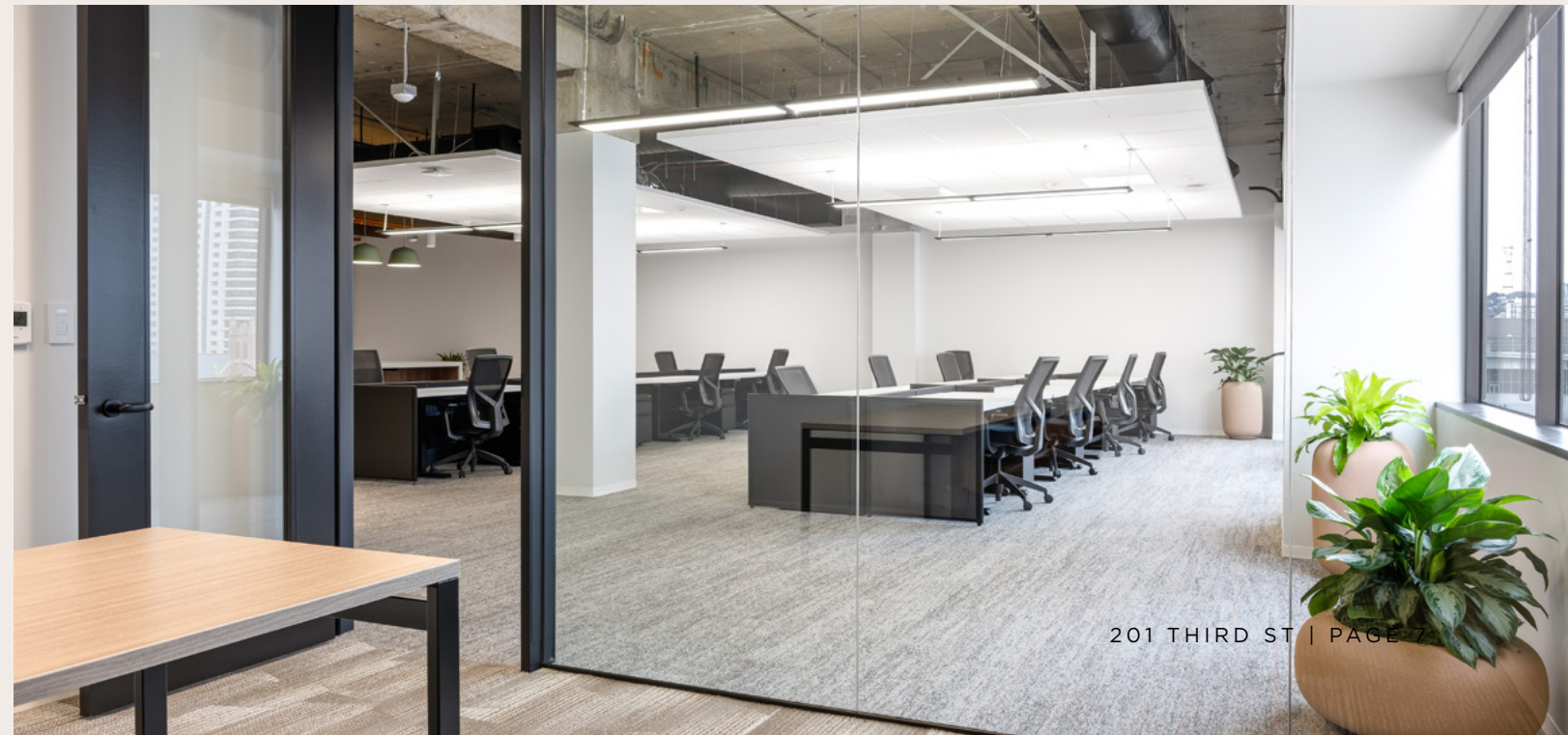
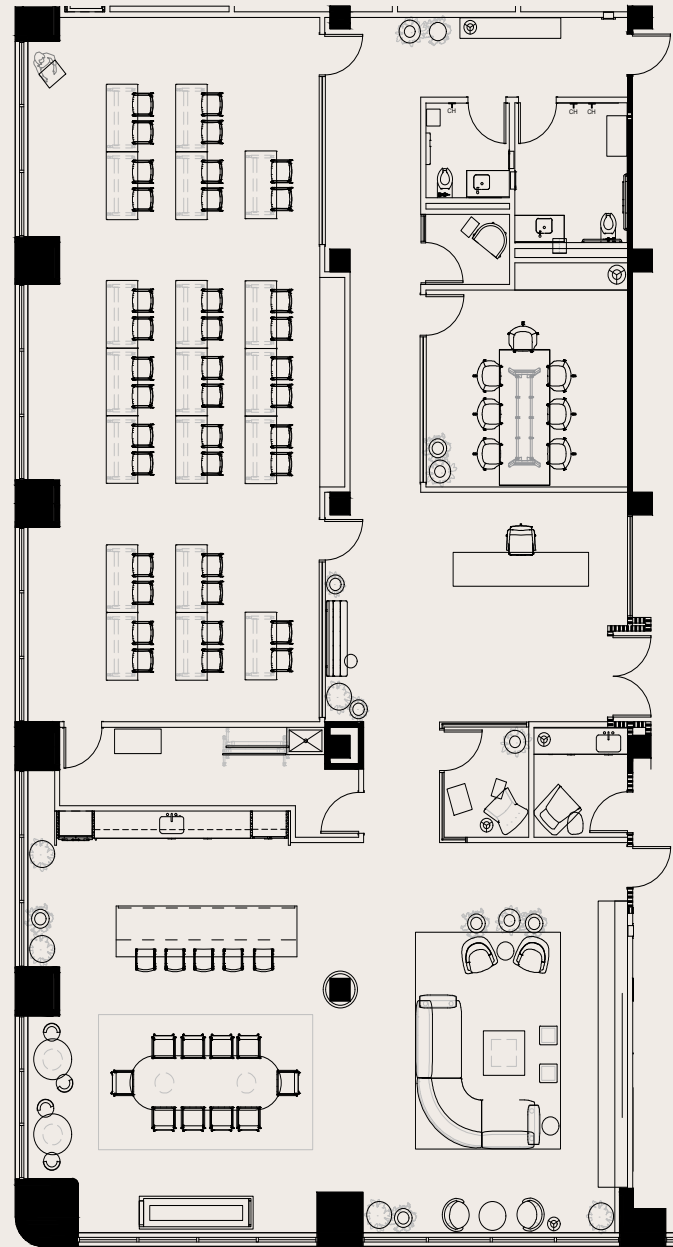


Curated Campus Art



# 9TH FLOOR REDEVELOPMENT

Coming soon to the **9th floor of 201 Third**: a brand-new amenities center designed to elevate the workplace experience for all of our tenants. This thoughtfully designed space will feature **a best-in-class conference center with multiple high-end meeting rooms, a comfortable lounge, flexible open space for events, private phone rooms, and a dedicated host to ensure seamless service.**



# CONVENIENT ACCESS

Located just **one block from BART & Muni**, with excellent access to the Bay Bridge, freeways, and both SFO and OAK airports, getting to and from the office has never been easier.

## KILLROY OPERATED SHUTTLE SERVICES

**—** A.M Schedule 7a.m - 10a.m  
 P.M Schedule 3p.m - 6p.m  
 Pickup/Drop Off:  
 Montgomery Street BART & King Steet Caltrain

### BART

**- - -** Richmond, Antioch, Dublin/  
 Pleasanton, Fremont, Daly City,  
 Milbrae, SFO line (9 min walk)

### MUNI

**—** Market St. bus lines - 1, 5, 6, 9, 21,  
 38, 71 (11 min walk)

**—** F Streetcar (13 min walk)

**—** Metro J, K, L, M, N, T (9 min walk)

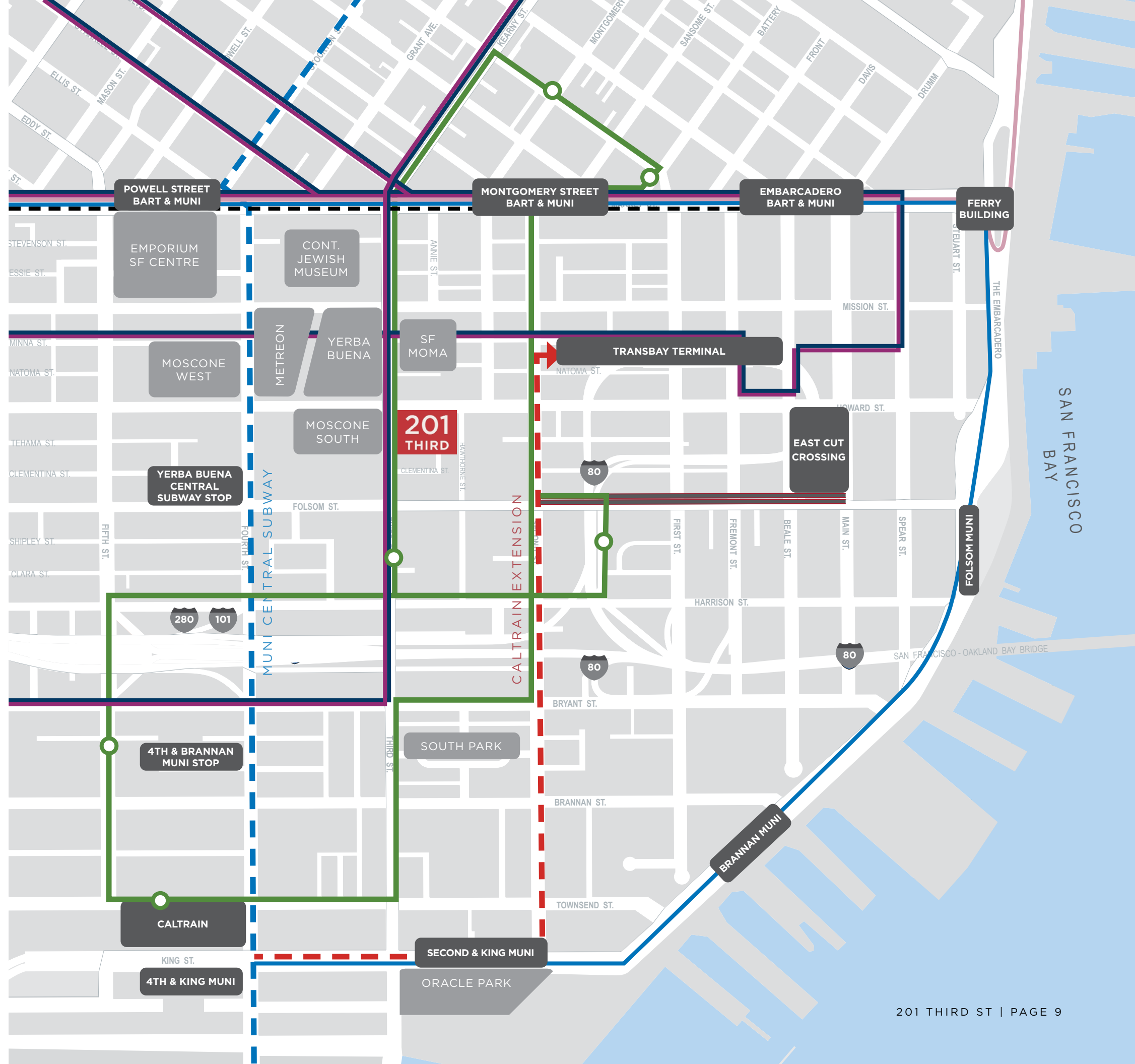
**- - -** Central Subway (7 min walk)

**—** Limited, express bus 8X, 38L  
 (2 min walk)

### CALTRAIN

**- - -** 4th Street Station (18 min walk)

### KILROY





360 THIRD ROOFDECK



201 THIRD PATIO

KILROY

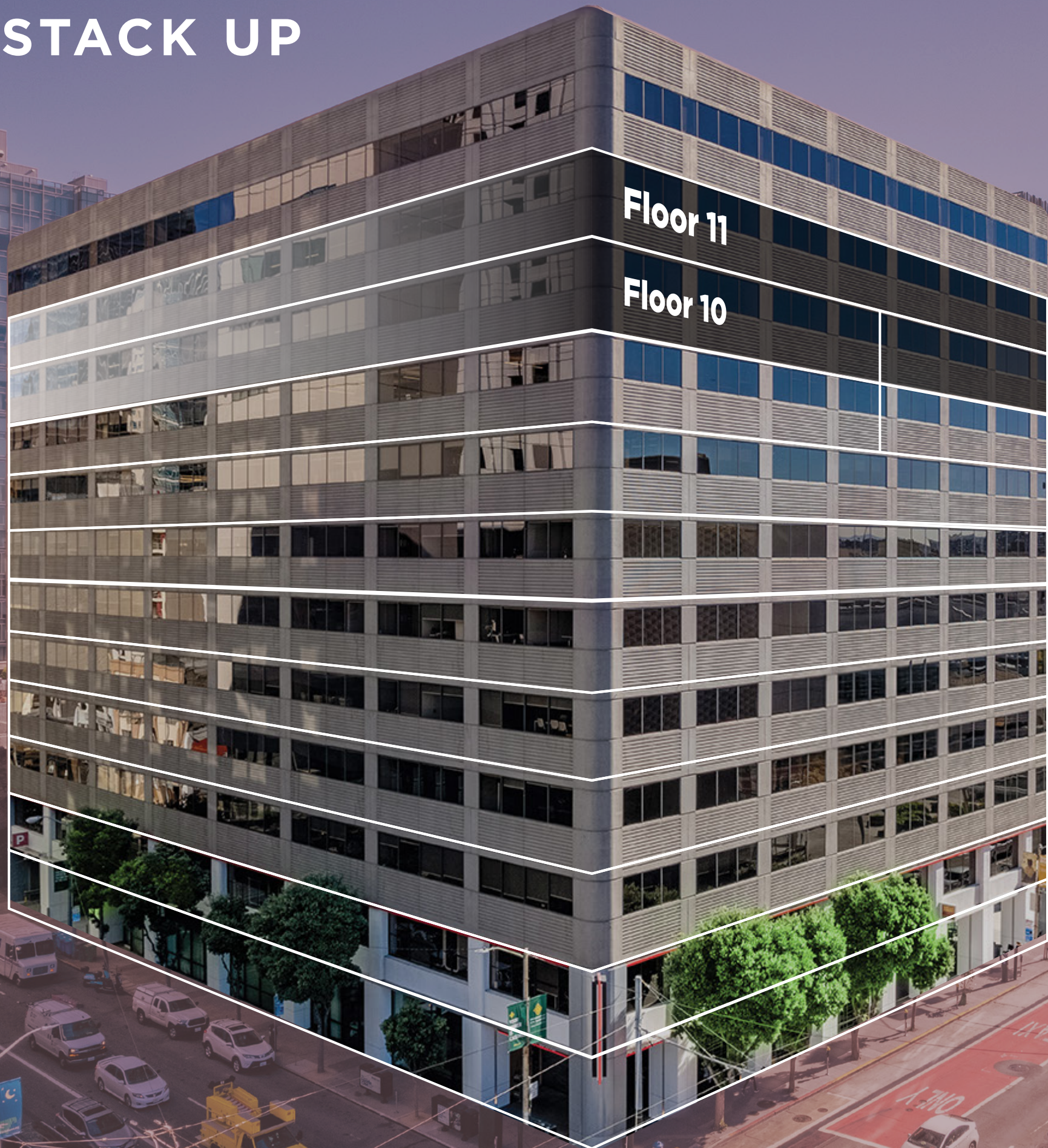
# NEARBY AMENITIES

● Restaurants ● Hotels



- |                  |                            |                      |                         |
|------------------|----------------------------|----------------------|-------------------------|
| 1. Fogo De Chao  | 10. Working Girls' Cafe    | 19. Buckhorn Grill   | 28. Hyatt Regency       |
| 2. Benu          | 11. The Bird               | 20. Super Duper      | 29. Four Seasons        |
| 3. Fang          | 12. Henery's Hunan         | 21. Mixt             | 30. Marriot Marquis     |
| 4. Trace         | 13. Sana'a Cafe            | 22. Amber India      | 31. The Mosser          |
| 5. The Grove     | 14. Soma Eats              | 23. Ippudo SF        | 32. InterContinental SF |
| 6. Oren's Hummus | 15. El Dorado Latin Fusion | 24. W. San Francisco | 33. Canopy by Hilton    |
| 7. New Ming's    | 16. Chaat Corner           | 25. The St. Regis    |                         |
| 8. Pink Elephant | 17. Pazzia                 | 26. Palace Hotel     |                         |
| 9. Ayola         | 18. Café De Soleil         | 27. The Clancy       |                         |

# HOW WE STACK UP



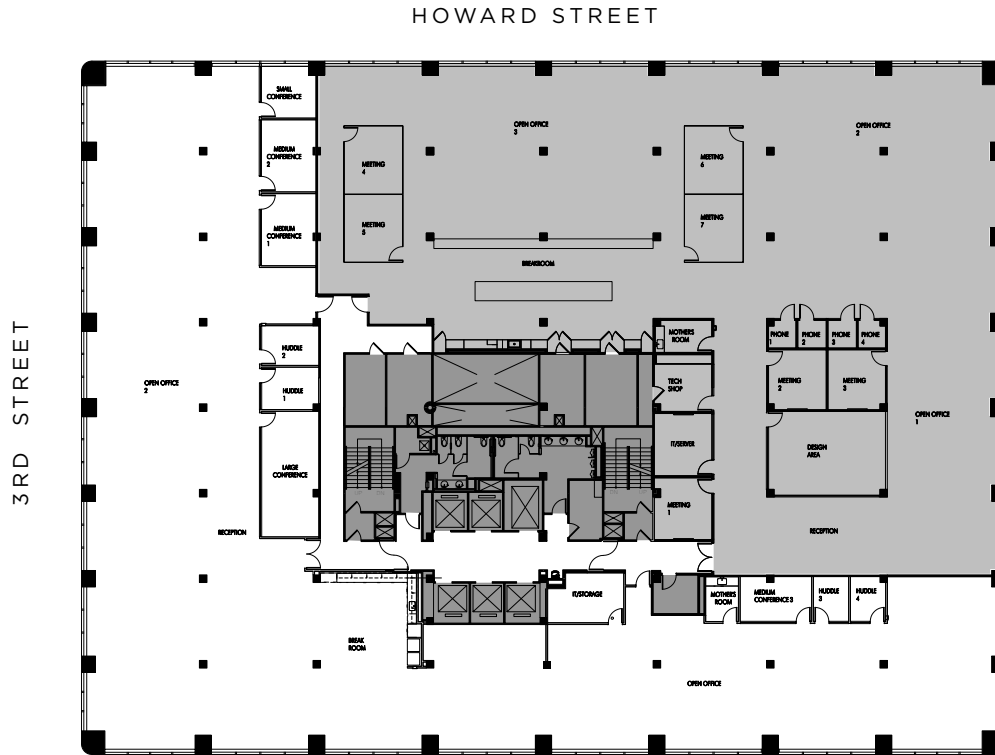
30,890 RSF  
AVAILABLE NOW

30,891 RSF  
AVAILABLE 1/2027

TENANT AMENITY  
REDEVELOPMENT

# 10TH FLOOR - SUITE 1000

FULL SUITE 1000 // 15,587 RSF



VIEW  
VIRTUAL  
TOUR



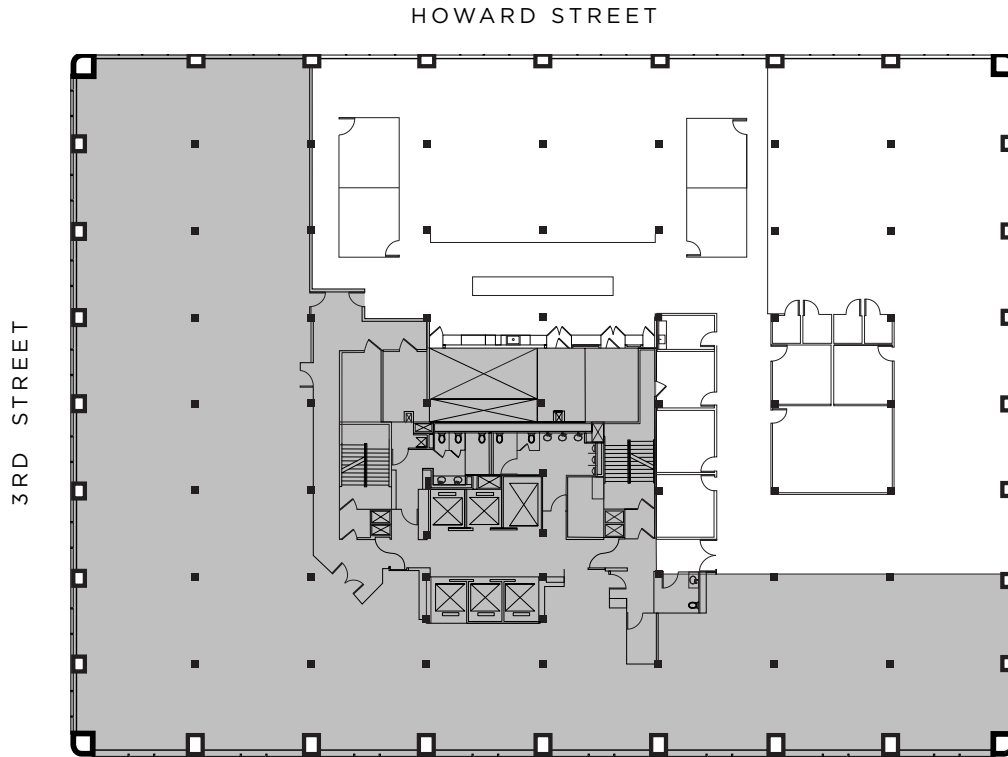
\*As-built plan

## SPECS:

- Available now
- Brand new spec suite
- Creative partial floor with exposed ceiling
- Divisible into 6,364 sq. ft. or 9,244 sq. ft. options
- Space for +/- 88 workstations
- 16 hoteling stations
- Large open kitchen and lounge
- 1 large conference room
- 4 medium conference rooms
- 4 huddle rooms
- 1 mother's room

## 10TH FLOOR - SUITE 1050

FULL SUITE 1050 // 15,304 RSF



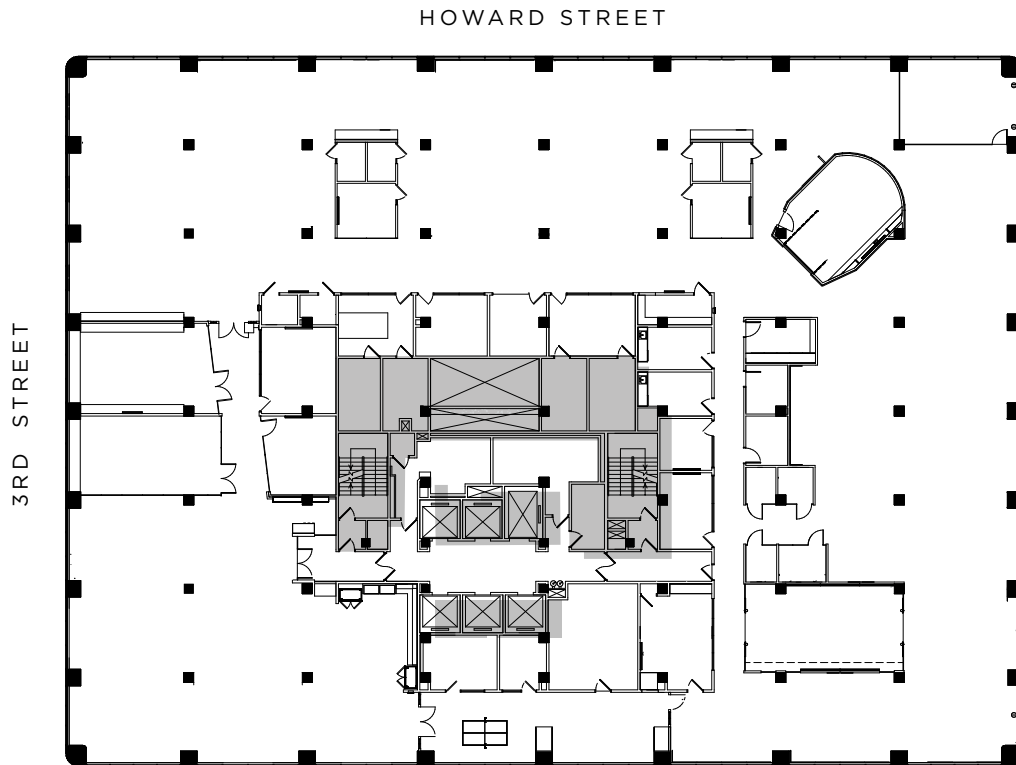
\*As-built plan

### SPECS:

- Available now 1/1/2027
- Open area with space for 95+ workstations
- 9 Private offices/ meeting rooms
- 1 large conference room
- Large open kitchen
- 4 phone rooms
- Mothers room

## 11TH FLOOR - SUITE 1100

30,890 RSF



\*As-built plan

VIEW  
VIRTUAL  
TOUR

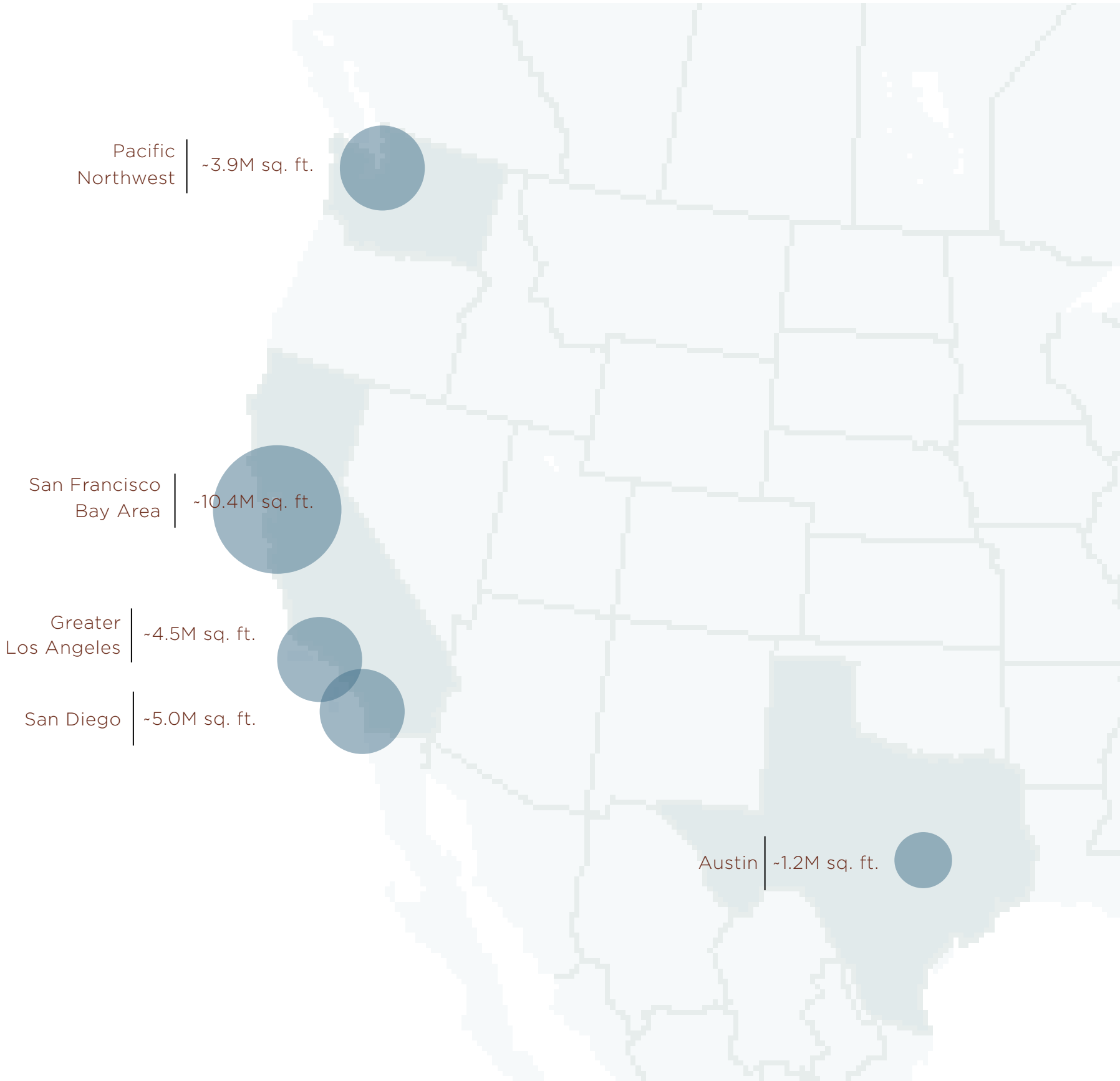


### SPECS:

- Available now
- Creative full floor build-out with exposed ceilings and polished concrete floors
- Space for +/- 158 workstations
- 2 large board rooms
- 2 large conference rooms
- 4 medium conference rooms
- 10 private offices / conference rooms
- 7 phone rooms
- 2 mother's rooms
- Speakeasy Lounge
- 360 degree City views

# BEST-IN-CLASS PORTFOLIO

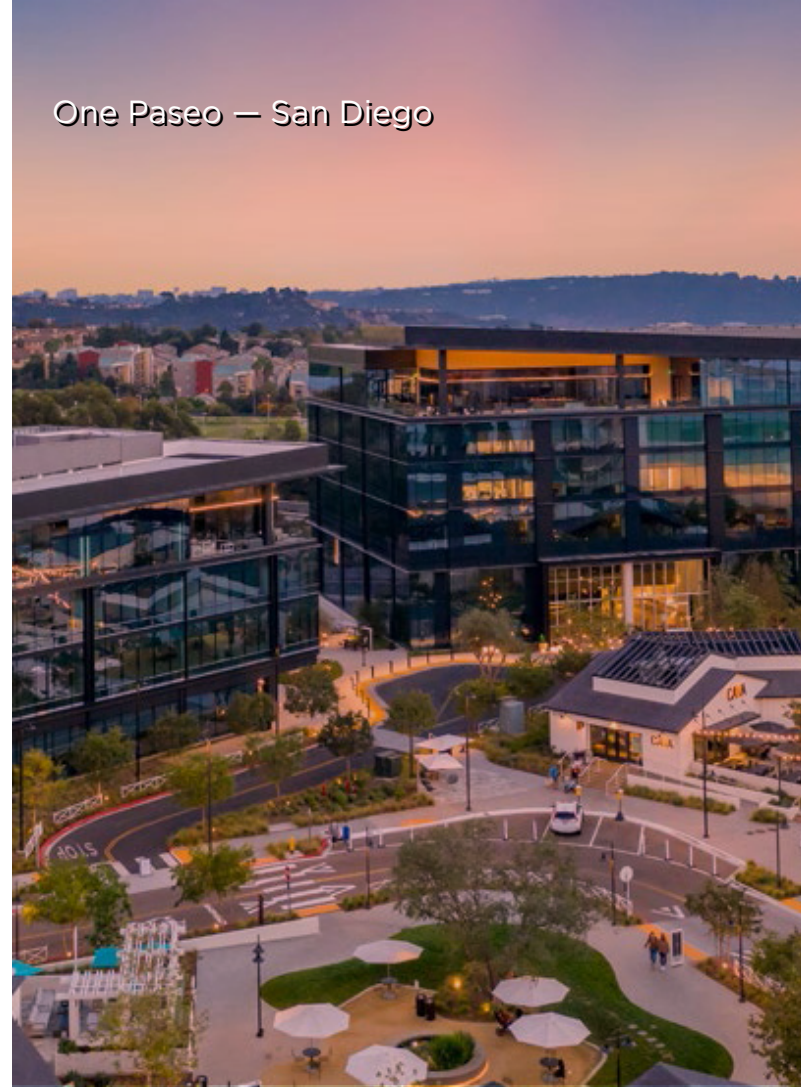
- Publicly-traded REIT (NYSE: KRC)
- Premier workplace developer and landlord
- 75+ years of operational history
- ~25M sq. ft. of operating portfolio and development pipeline\* (workplace and retail)
- Vertically-integrated platform: AWCquisitions, development, property management, leasing, and finance
- 11-year average portfolio age
- Strong commitment to sustainability



Square footages sourced from the Kilroy 2Q24 Supplemental and includes stabilized, tenant improvement, under construction, and development pipeline estimations.



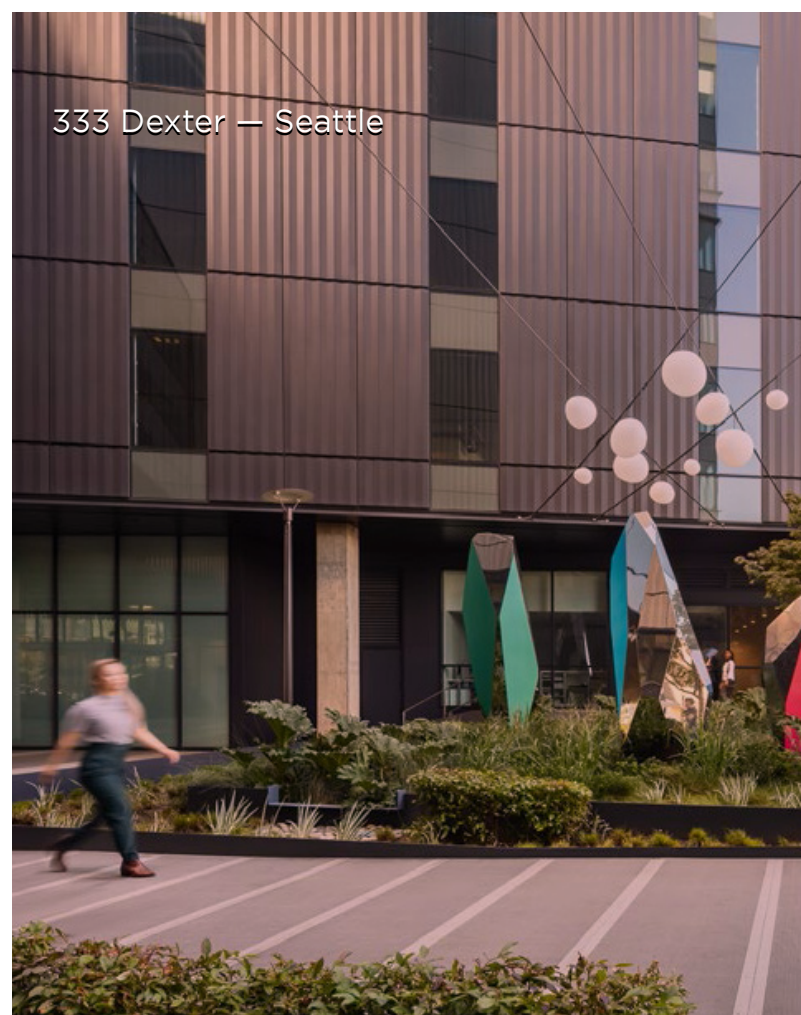
Indeed Tower — Austin



One Paseo — San Diego



On Vine — Hollywood



333 Dexter — Seattle

# THE KILROY EXPERIENCE - REDEFINING PLACES FOR NEW WORK

Kilroy Realty is a leading West Coast real estate company focused on creating sustainable, high-quality workplaces that support tenant well-being and contribute positively to the environment and community.

## SUSTAINABLE, INNOVATIVE DESIGN

- Kilroy properties emphasize sustainable design and practices, aligning with tenants' environmental goals.
- Buildings feature top-tier amenities, along with retail, public art, and community spaces, creating dynamic environments for work and leisure.

## TENANT-FOCUSED MANAGEMENT

- Kilroy's property management approach includes sustainability-focused programs and proactive support to enhance tenants' experience.
- Workspaces are designed to promote employee well-being and foster a sense of community, making them attractive to companies in tech, media, life sciences, and other innovative industries.

## KILROY IS DRIVING ENVIRONMENTAL PROGRESS THROUGH DESIGN AND OPERATIONS

Kilroy differentiates itself through an unmatched focus on sustainability and wellness. Kilroy properties are designed to the highest standards, with numerous LEED and WELL certifications, carbon-neutral operations since 2020, and extensive energy efficiency initiatives.

Our sustainability efforts are broad, and include a focus on energy, carbon, water, waste, health & wellness, and stakeholder engagement. We identify climate change as both a risk and an opportunity to our business and we build these factors into our strategy and risk management efforts. Our sustainability programs contribute to long-term value creation and help shape our corporate strategy.

This commitment to green practices positions Kilroy as a leader in environmentally responsible real estate.

Learn more: [kilroyrealty.com/sustainability](https://kilroyrealty.com/sustainability)

# SUSTAINABILITY ACHIEVEMENTS & ACCOLADES



**Carbon Neutral Operations** Kilroy has achieved carbon neutral operations across our portfolio since 2020



**Best in Building Health**  
Fitwel Excellence Award, Most Certifications of All Time, 2019-2022



**Energy Star**  
Partner of the Year, 2014-2025 Sustained Excellence, 2016-2023



**Newsweek**  
Listed on America's Most Responsible Companies, 2020-2025



**GRESB**  
5-Star Designation for Standing Assets & Development, 2015-2023



**Green Lease Leaders**  
Leader, 2014-2024  
Gold Level, 2018-2024  
Champion of the Decade, 2024



**US EPA Green Power Partnership**  
Member of National Top 100 Green Power Users, 2021-2024



**Bloomberg Gender-Equality Index**  
Member, 2020-2023



# 201 THIRD

**CHRISTOPHER T. ROEDER**

+1 415 395 4971  
chris.roeder@jll.com  
License #: 01190523

**TED DAVIES**




+1 415 395 4972  
ted.davies@jll.com  
License #: 01460185

**MICHAEL DEMARIA**

+1 415 395 7248  
michael.demaria@jll.com  
License #: 01366535



Where Innovation Works

Kilroy's socials:   

Jones Lang LaSalle Brokerage, Inc. License #01856260

JLL disclaimer (universal): Although information has been obtained from sources deemed reliable, neither Owner nor JLL makes any guarantees, warranties or representations, express or implied, as to the completeness or accuracy as to the information contained herein. Any projections, opinions, assumptions or estimates used are for example only.

There may be differences between projected and actual results, and those differences may be material.

The Property may be withdrawn without notice. Neither Owner nor JLL accepts any liability for any loss or damage suffered by any party resulting from reliance on this information. If the recipient of this information has signed a confidentiality agreement regarding this matter, this information is subject to the terms of that agreement. ©2025 Jones Lang LaSalle IP, Inc. All rights reserved.