

A photograph of the Congress Square building in Boston, showing its classic stone facade and a modern glass extension. The building is illuminated at dusk.

congress square

CREATE AND INNOVATE AT CONGRESS SQUARE

The restored and reconfigured Congress Square combines classic architecture with new, modern, efficient and dynamic office spaces. The building offers innovative spec suites and superb amenities centrally located in Downtown Boston.

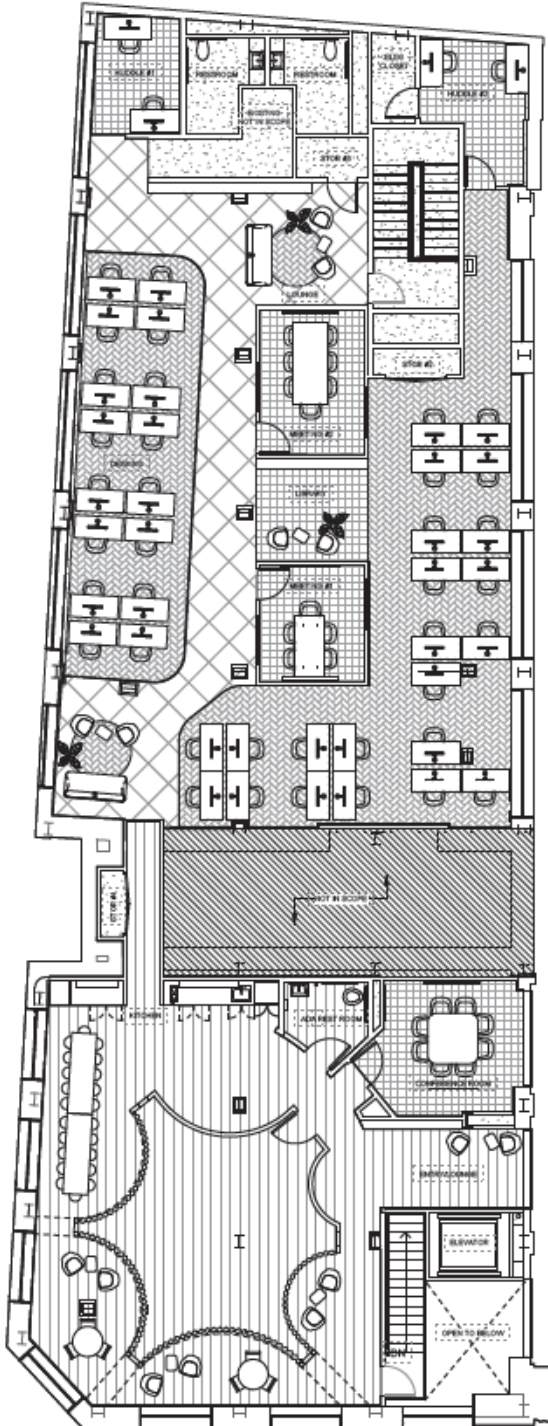
Congress Square offers tenants the following state of the art, move-in ready suites

- » Mezzanine: 6,586 RSF
- » Second Floor: 25,191 RSF
- » Sixth Floor: 23,111 RSF
- » Seventh Floor: 23,105 RSF



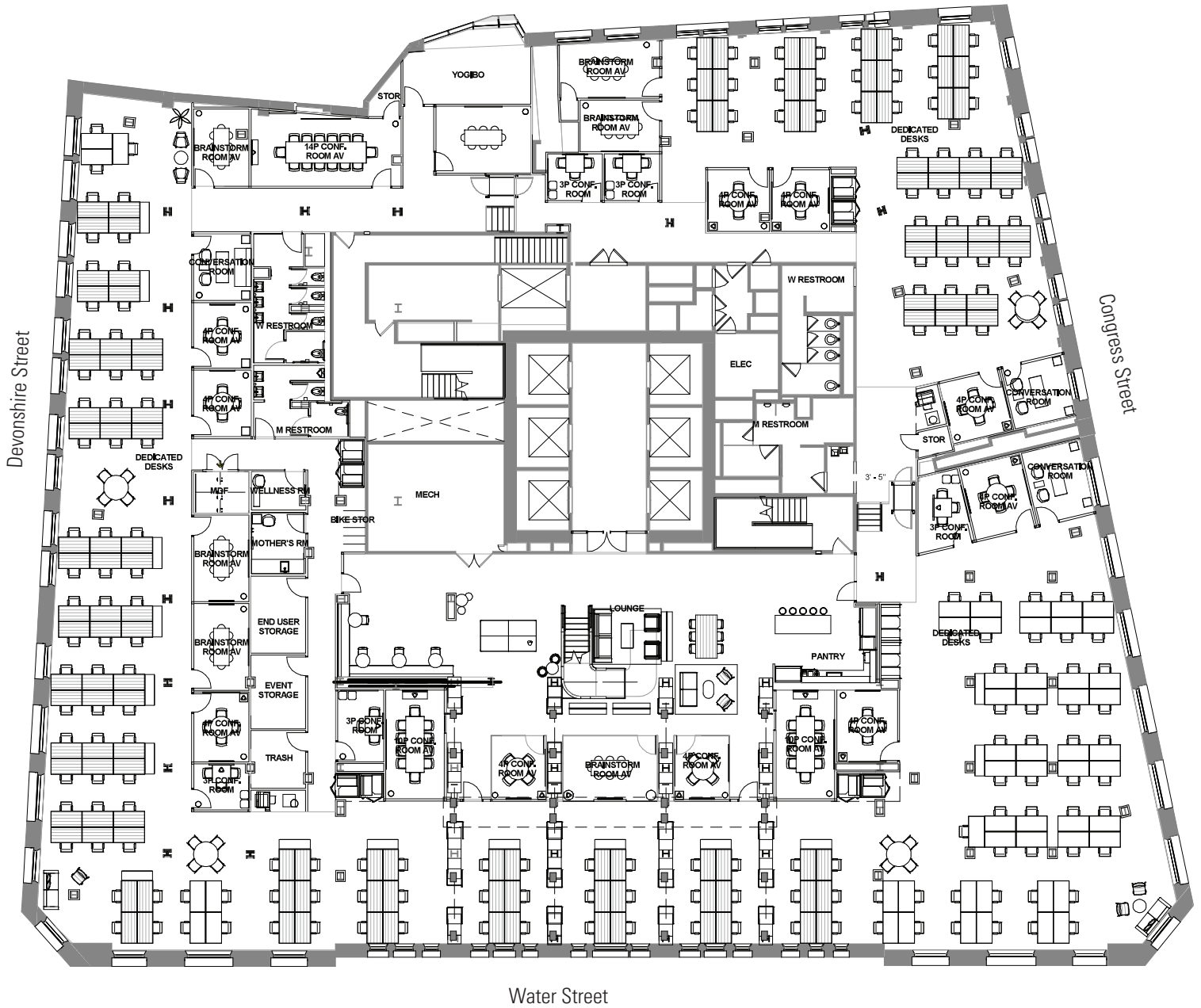
MEZZ FLOOR

6,586 RSF

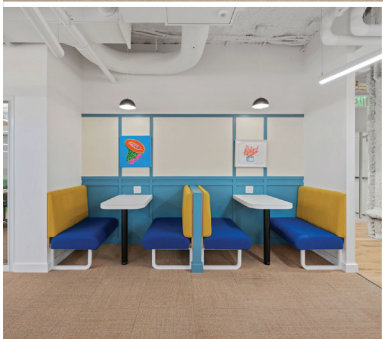


FLOOR TWO

FULL FLOOR | 25,191 RSF

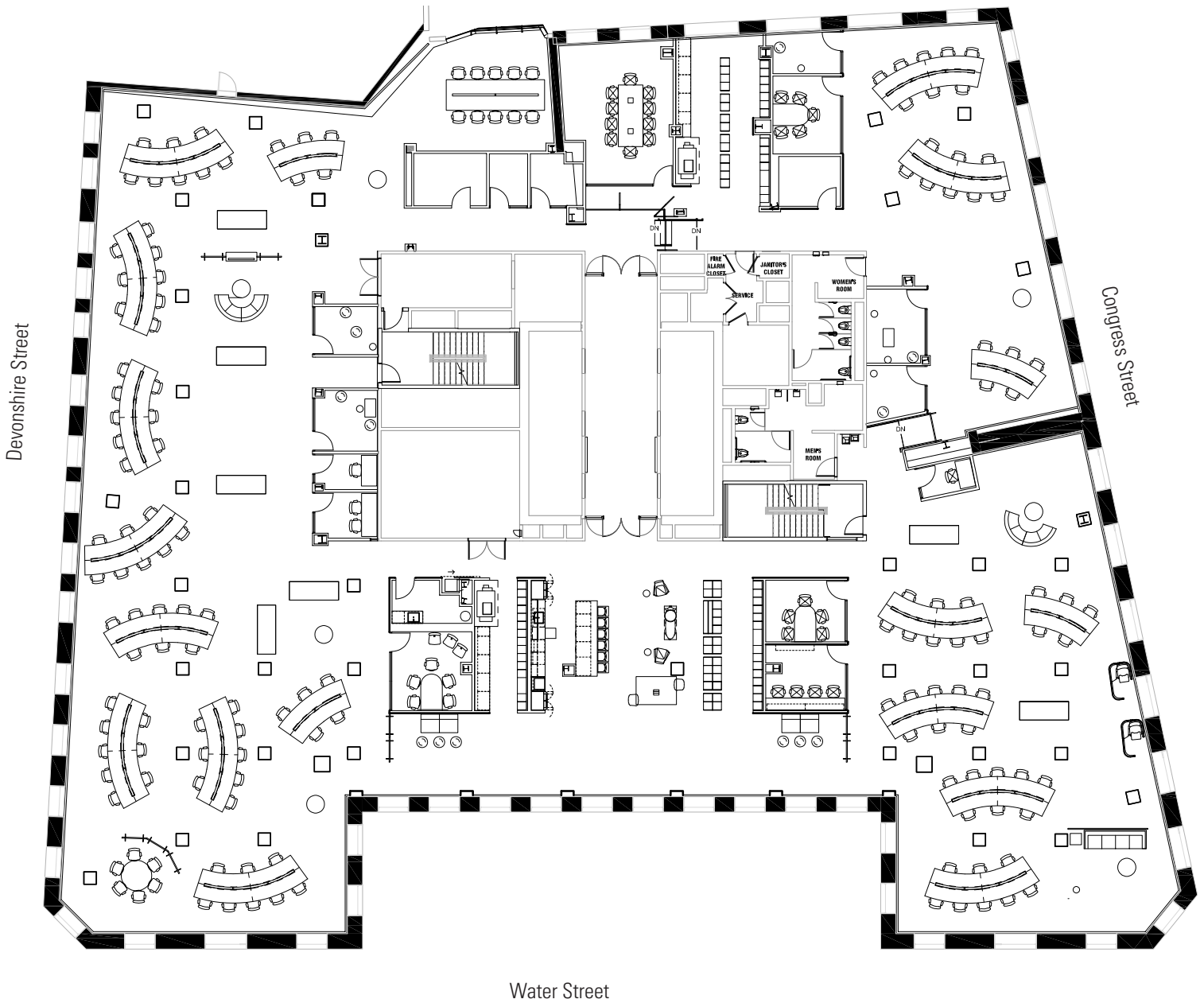


FLOOR TWO



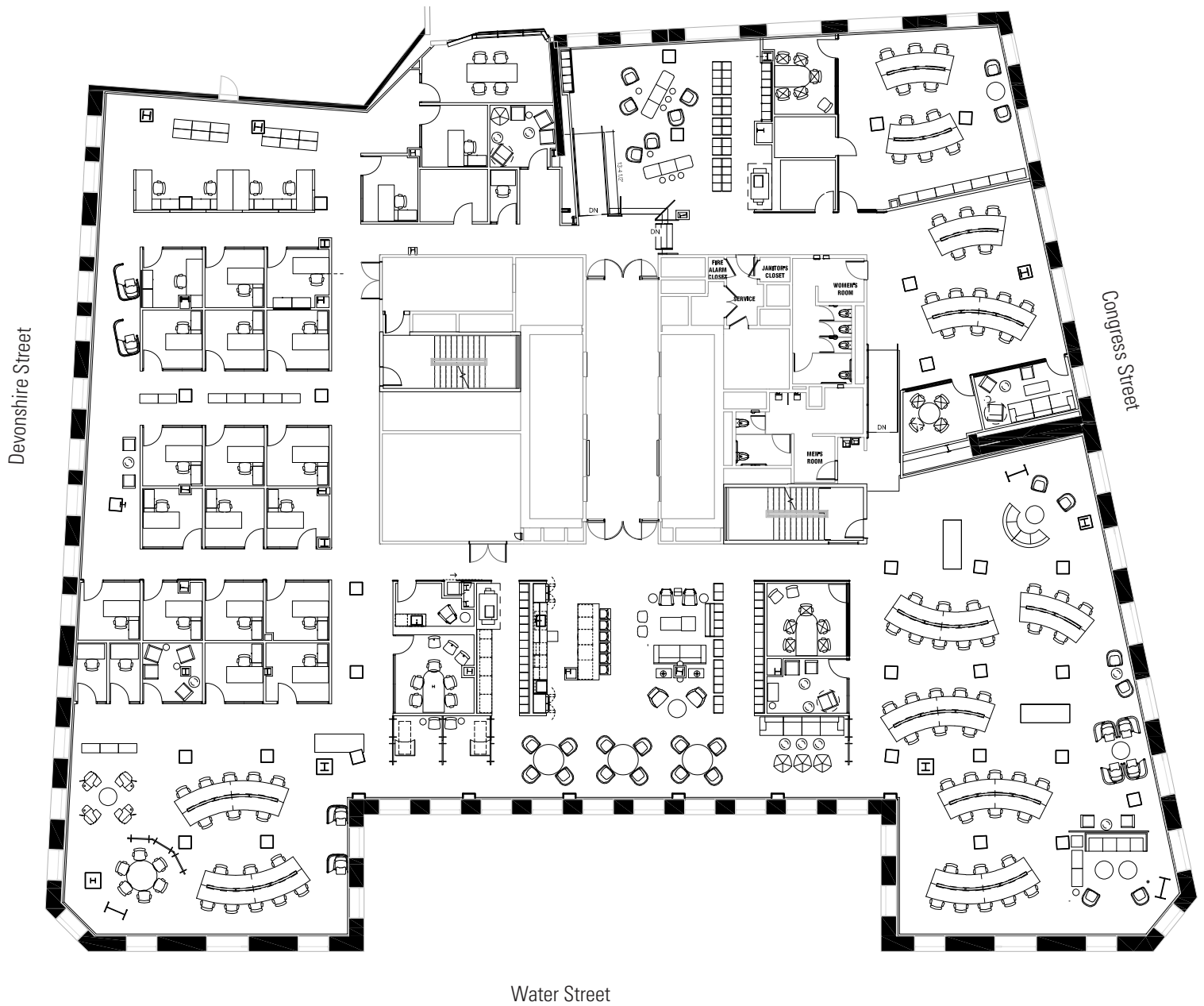
FLOOR SIX

FULL FLOOR | 23,111 RSF

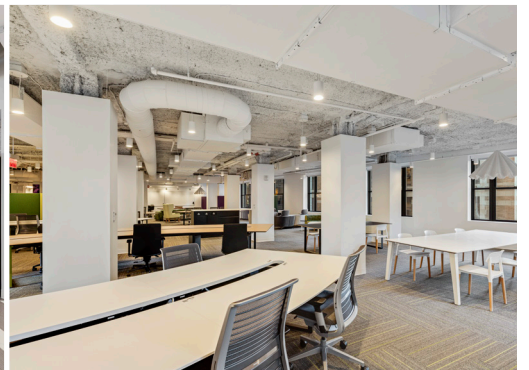
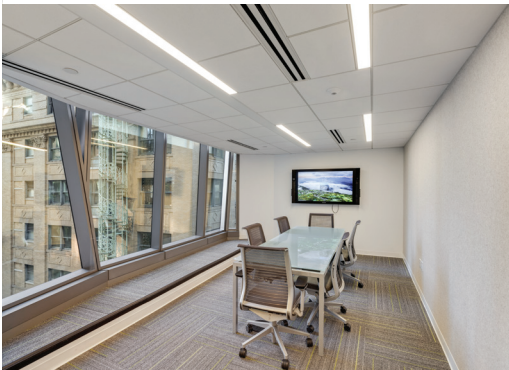


FLOOR SEVEN

FULL FLOOR | 23,105 RSF



FLOORS SIX & SEVEN



BUILDING FEATURES



Fitness center with locker rooms & showers



On-site food service



Bike storage



Conferencing facility



Tenant lounge



24/7 security

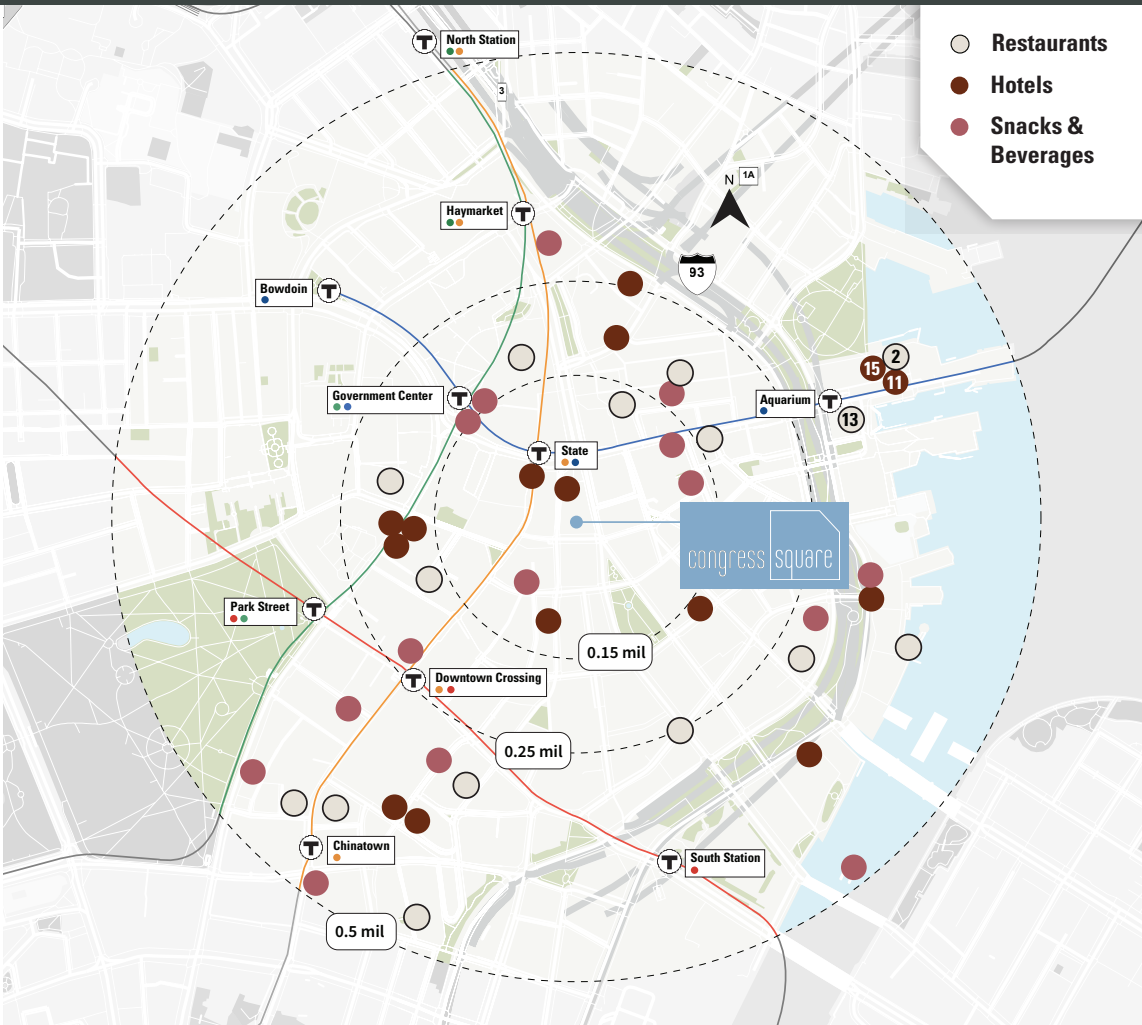


Fitness center



Tenant lounge

LOCATION HIGHLIGHTS



FOR MORE INFORMATION PLEASE CONTACT:

BRIAN FLAHERTY
 Brian.Flaherty@jll.com
 +1 617 531 4274

BEN HUX
 Ben.Hux@jll.com
 +1 617 316 6507

