

Steelwood Business Park

000 Middleton Ln, Loxley, AL, 36551



Now Leasing Phase 1

+/-15,800 SF - 65,400 SF Available

 **JLL** SEE A BRIGHTER WAY

jll.com

Jones Lang LaSalle Americas, Inc. | 04/07/2026

Property Features

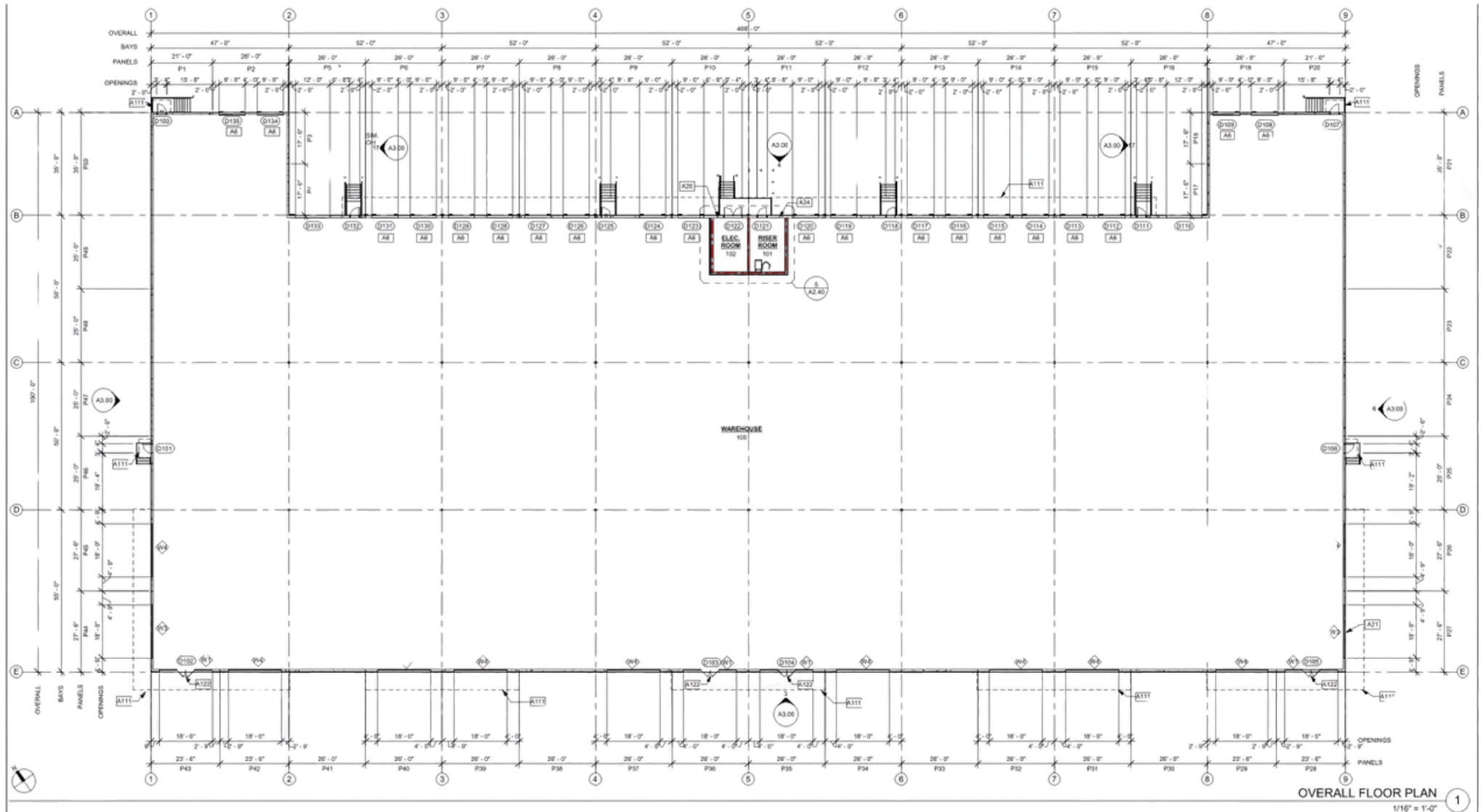
- Class A Industrial
- Delivery: Estimated 2Q2026
- Office Space: BTS
- 28' clear height
- 52'x50' column spacing
- 18 dock-high doors, 2 drive-in doors

Inquire for Pricing



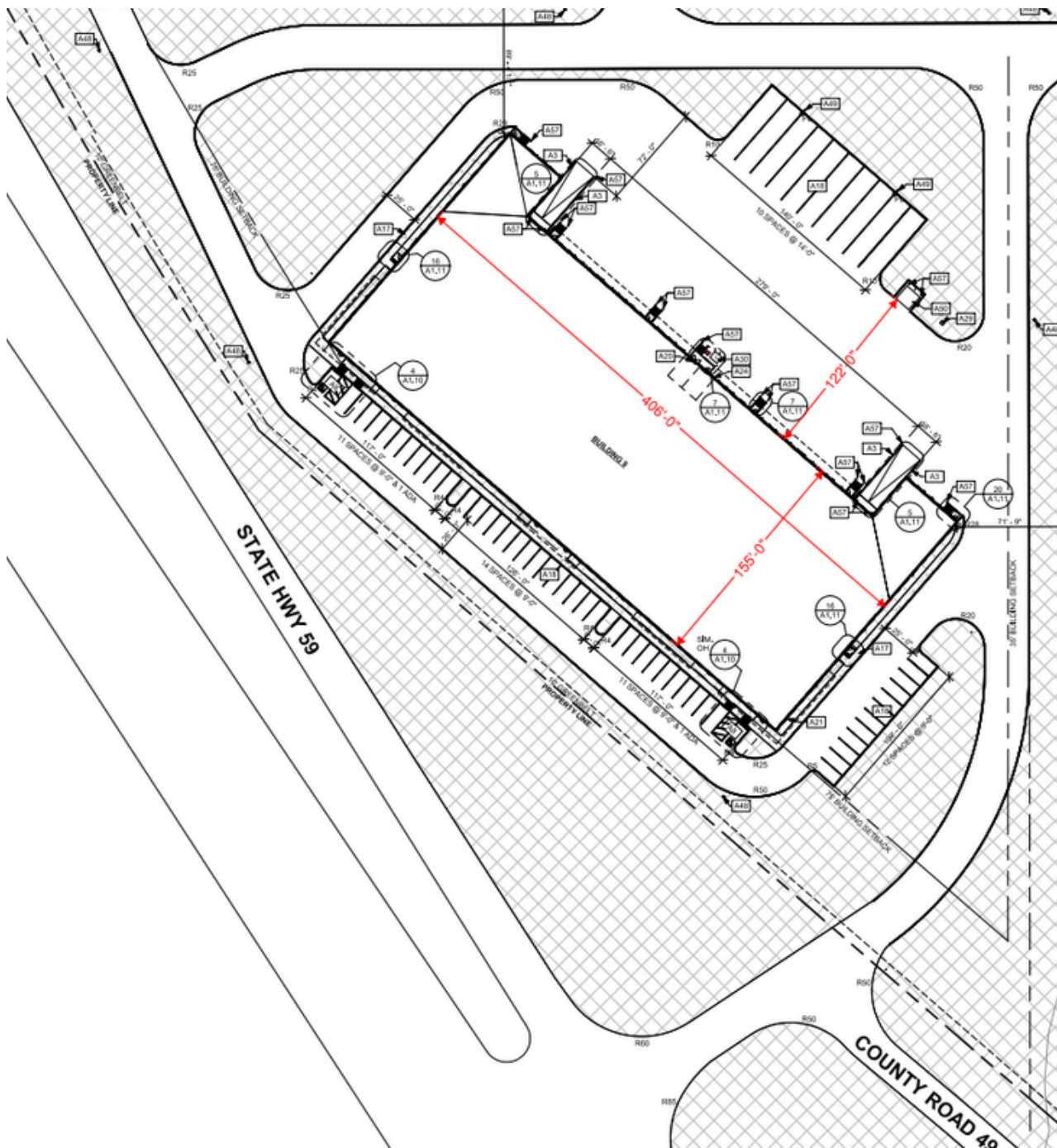
000 Middleton Ln, Loxley, AL, 36551

Floor Plan



OVERALL FLOOR PLAN 1
1/16" = 1'-0"

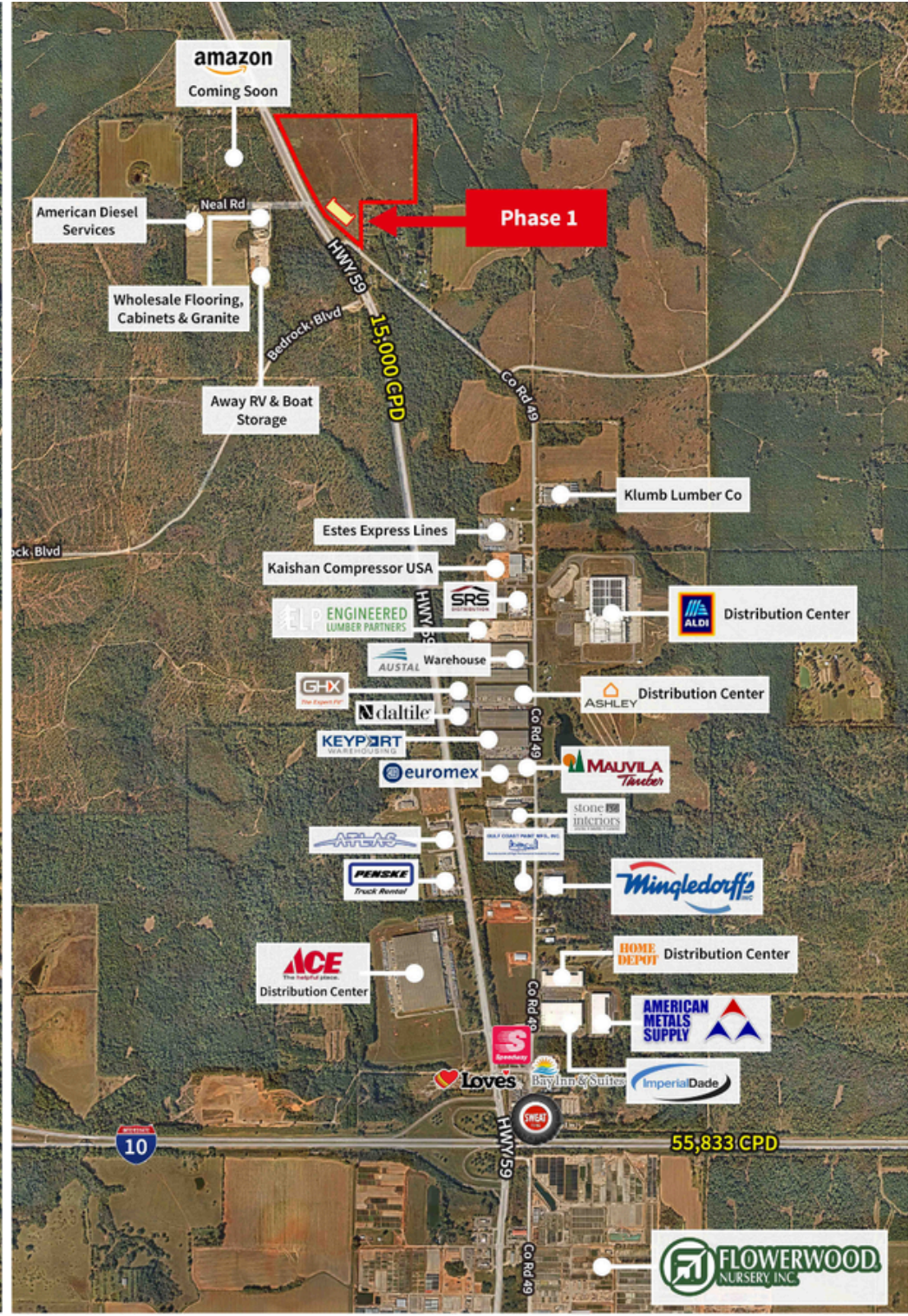
Phase 1 Site Plan



Overall Site Plan



Aerials



000 Middleton Ln, Loxley, AL, 36551

Thank you

Contact for more information:

Allen Garstecki

Executive Vice President

allen.garstecki@jll.com

(251) 301-7369