

**For Sublease**  
**±8,507 SF Divisible**

# Canyon Corporate Center

**3880 Murphy Canyon Road, Suite 100**

San Diego, CA 92123

**Ariq Huda**

Vice President

+1 619 306 4969

[ariq.huda@jll.com](mailto:ariq.huda@jll.com)

RE License #01893328



Jones Lang LaSalle Brokerage, Inc. RE lic. #0185626

## Canyon Corporate Center

3880 Murphy Canyon Road  
Suite 100

Ground floor space with  
double entry door off of the  
lobby.

- ±8,507 SF for Sublease
- 15 Private Offices
- 11 Oversized Work Stations
- FF&E Available
- Term through October 2028

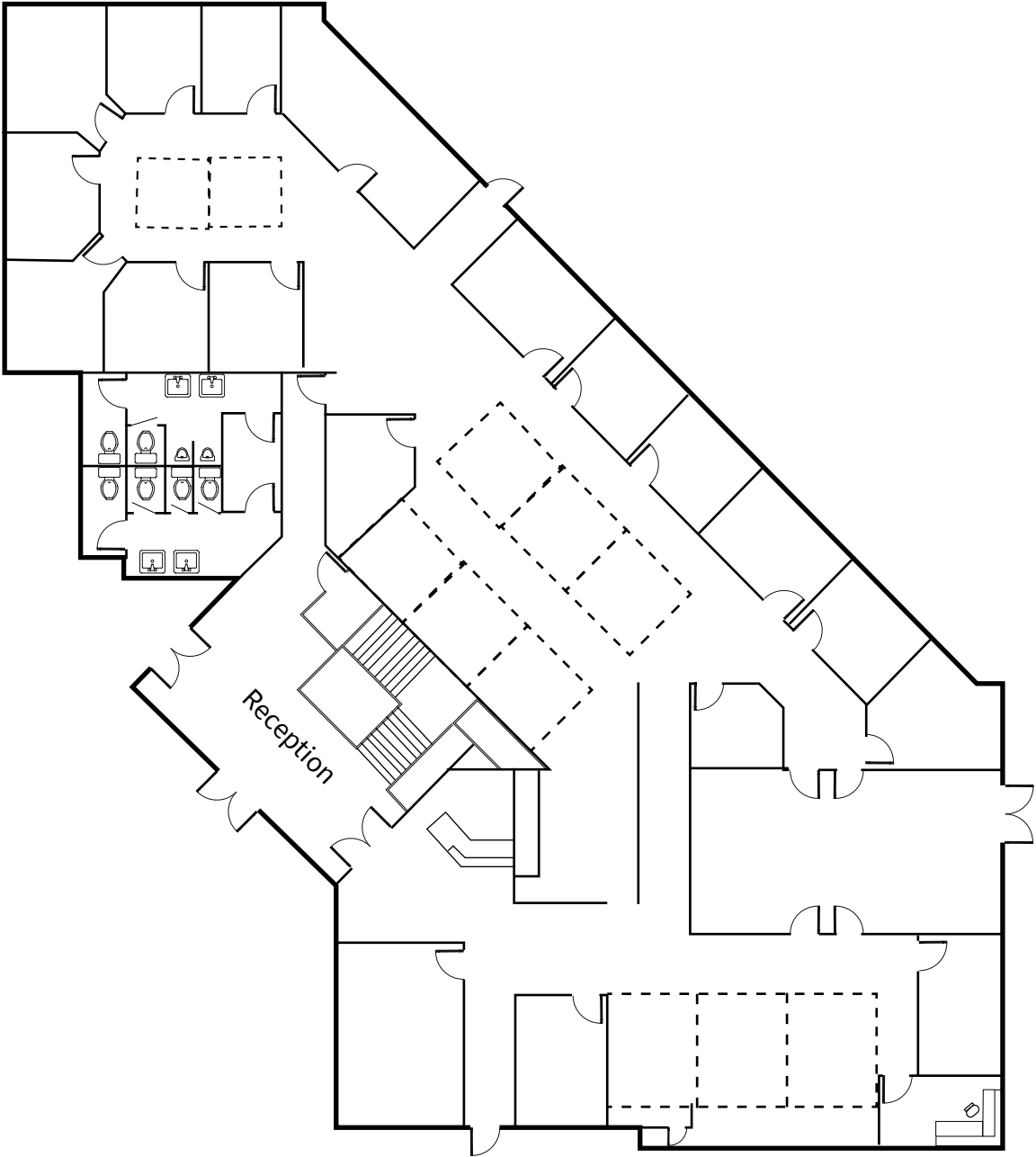
**Contact broker for Lease Rate**



# Site & Floor Plan

SUITE 100

±8,507 SF





BALBOA AVENUE

**3880**  
Murphy Cayon Road



AERO DRIVE

**Ariq Huda**  
Vice President  
+1 619 306 4969  
ariq.huda@jll.com  
RE License #01893328

Jones Lang LaSalle Brokerage, Inc. RE lic. #0185626

Although information has been obtained from sources deemed reliable, neither Owner nor JLL makes any guarantees, warranties or representations, express or implied, as to the completeness or accuracy as to the information contained herein. Any projections, opinions, assumptions or estimates used are for example only. There may be differences between projected and actual results, and those differences may be material. The Property may be withdrawn without notice. Neither Owner nor JLL accepts any liability for any loss or damage suffered by any party resulting from reliance on this information. If the recipient of this information has signed a confidentiality agreement regarding this matter, this information is subject to the terms of that agreement. ©2026. Jones Lang LaSalle IP, Inc. All rights reserved.