

OFFICE SPACE FOR LEASE

# SANDY COMMERCE PARK



9490 SOUTH 300 WEST SANDY, UTAH





# Building Overview



CLASS A OFFICE

ASKING LEASE RATE

\$29.50 PSF

HIGHLY VISIBLE  
LOCATION

ADJACENT TO I-15

DIRECT ACCESS VIA 2  
MAJOR FREEWAY EXITS

90TH SOUTH AND 106TH SOUTH

AMENITY-RICH LOCATION

JUST 3 MINUTES FROM THE  
SHOPS AT SOUTH TOWN

FIBER OPTIC  
CONNECTIVITY

INCLUDING INFRASTRUCTURE  
FOR REDUNDANT POWER

MODERN WORKSPACE

FLOOR-TO-CEILING GLASS

SPECTACULAR VIEWS

OF THE MOUNTAINS

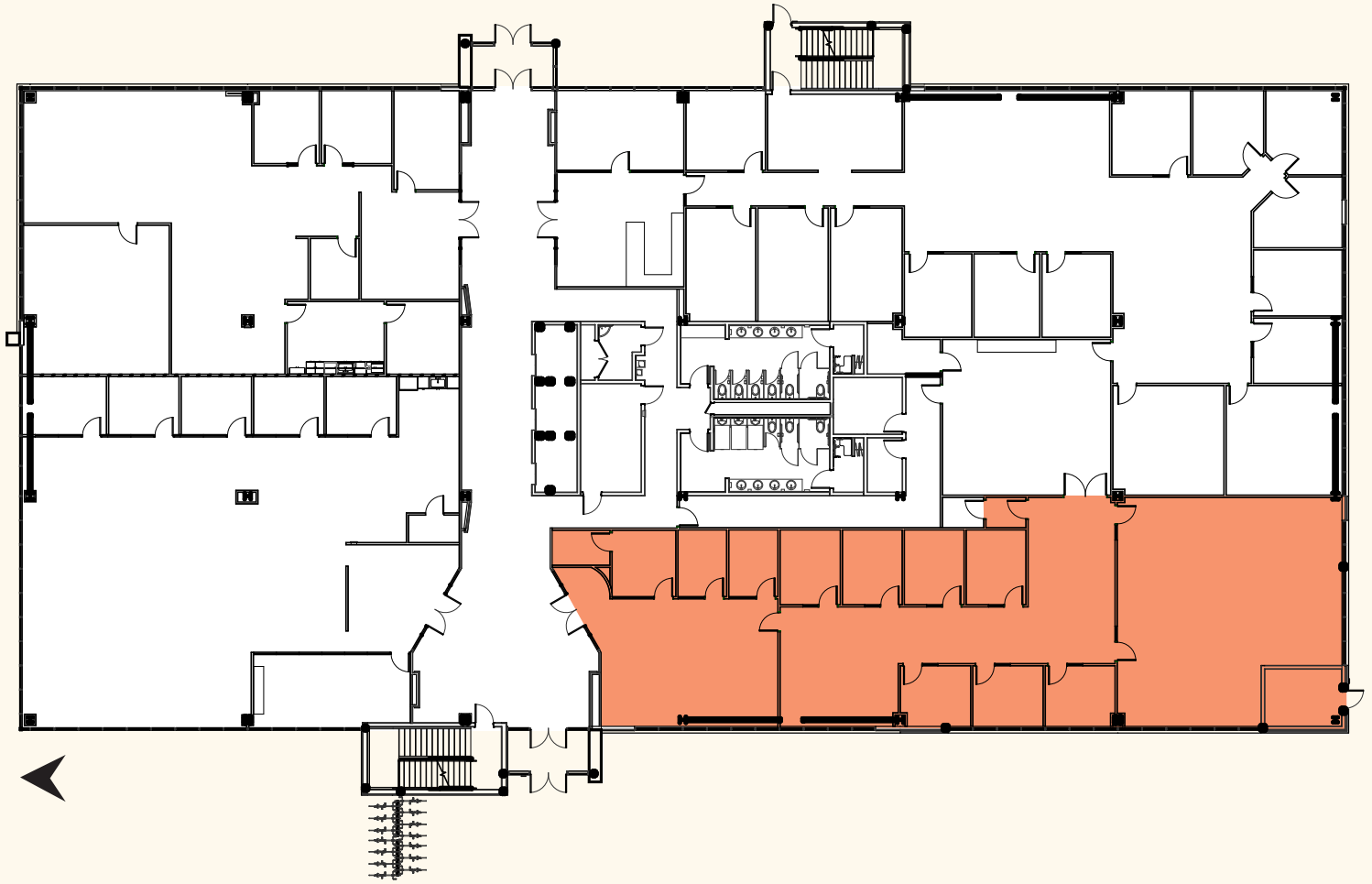
SHOWER FACILITIES

ON THE MAIN FLOOR

ABUNDANT PARKING

5/1,000 SF PARKING RATIO

SUITE 110 | 4,187 RSF





# Nearby Amenities



ATHENA VII

9000 SOUTH

AMERICA FIRST FIELD

MEGAPLEX THEATRES

STATE STREET



MOOYAH  
BURGERS • FRIES • CHICKEN

CRISP GREEN



HYATT house

9400 SOUTH

SANDY COMME

RIVER OAKS GOLF COURSE





THE SHOPS AT  
SOUTH  
TOWN

**A 3-MINUTE DRIVE AWAY**

118 SHOPS AND RESTAURANTS

- American Eagle
- Aeropostale
- Buckle
- Ethan Allen
- Foot Locker
- H&M
- Hallmark
- HomeGoods
- JC Penney
- Journeys
- Lens Crafters
- Morgan Jewelers
- Pacsun
- Round 1
- Sephora
- Vans
- Zumiez



For leasing information, contact:

**DAVID NIXON**  
+1 801 456 9518  
david.nixon@jll.com

**BRONSON RAWLINS**  
+1 801 456 9513  
bronson.rawlins@jll.com



Although information has been obtained from sources deemed reliable, neither Owner nor JLL makes any guarantees, warranties or representations, express or implied, as to the completeness or accuracy as to the information contained herein. Any projections, opinions, assumptions or estimates used are for example only. There may be differences between projected and actual results, and those differences may be material. The Property may be withdrawn without notice. Neither Owner nor JLL accepts any liability for any loss or damage suffered by any party resulting from reliance on this information. If the recipient of this information has signed a confidentiality agreement regarding this matter, this information is subject to the terms of that agreement. ©2026 Jones Lang LaSalle IP, Inc. All rights reserved.