

For Lease

5989 Hucks Road
Charlotte, NC

SilverPark North I

23,310 - 58,764 s.f. available

Inside I-485, less than 1 mile to I-485 access, and less than 2 miles to I-77



Matthew Greer, CCIM, SIOR
704.804.5762
matthew.greer@jll.com

Brad Cherry, CCIM, SIOR
704.927.3013
brad.cherry@jll.com

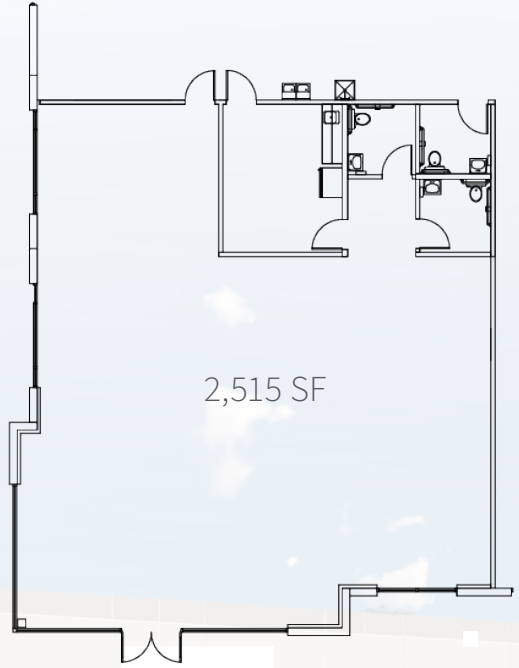
John Kincaid, CCIM,
SIOR Member Associate
704.907.8608
john.kincaid@jll.com



Park photos



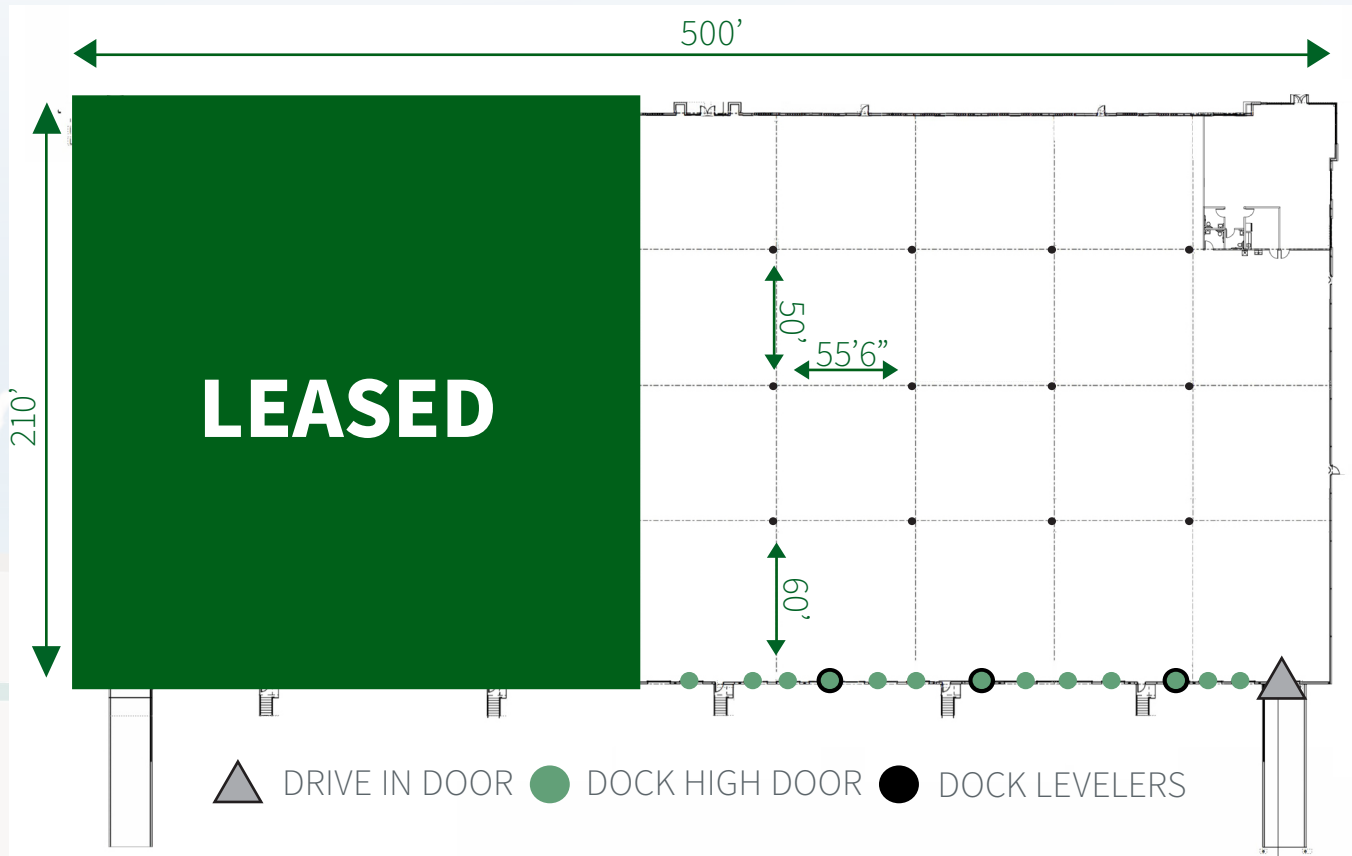
Office plan



Site plan



Building specifications



Total building	105,384 s.f. (210' x 500')	Column spacing	50' x 55'6", with 60' speed bay
Available	±23,310 - 58,764 s.f.	Dock high doors	13 (9' x 10' with view panel)
Office size	2,515 SF (Under Construction)	Drive-in doors	1 (12' x 14')
Lighting	LED	Dock packages	3 pit levelers
Floor	6" reinforced concrete slab (4000 psi)	Power	1200 Amps, 3PH, 480V
Clear height	32'	Sprinkler	ESFR
Zoning	ML-2, CD	Roof	60-mil white TPO with a 20-year warranty
Utilities	Duke Power, PNG, City of Charlotte (water and sewer)	Car parking	±48 auto spaces

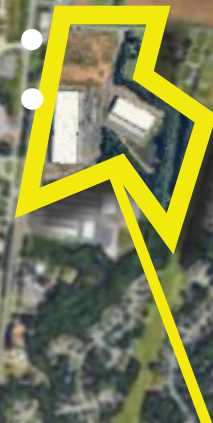


LOCATION

- ±1 MILE TO I-485
- ±2 MILES TO I-77
- ±5 MILES TO I-85
- ±15 MILES TO CHARLOTTE CBD
- ±20 MILES TO CLT INT'L AIRPORT

Old Statesville Rd

W.T. HARRIS BLVD



SilverPark North Site



Matthew Greer, CCIM, SIOR
 704.804.5762
 matthew.greer@jll.com

Brad Cherry, CCIM, SIOR
 704.927.3013
 brad.cherry@jll.com

John Kincaid, CCIM,
 SIOR Member Associate
 704.907.8608
 john.kincaid@jll.com

