



For lease

Century Park Place
855 8th Avenue SW, Calgary, AB

 **JLL** SEE A BRIGHTER WAY

Property Highlights

- Variety of suite build-outs to suit any tenant
- Aggressive market lease rates
- Suites come with an abundance of natural light
- Underground parking
- On-site security
- Amenity rich area
- Walking distance to 7th Avenue LRT station

Available Suites Suite 205: 905 sf
Suite 300: 7,307 sf
Suite 500: 7,523 sf
Suite 700: 7,320 sf
Suite 1010: 1950 sf

Available Immediate

Term Flexible

Asking Rate Market lease rates

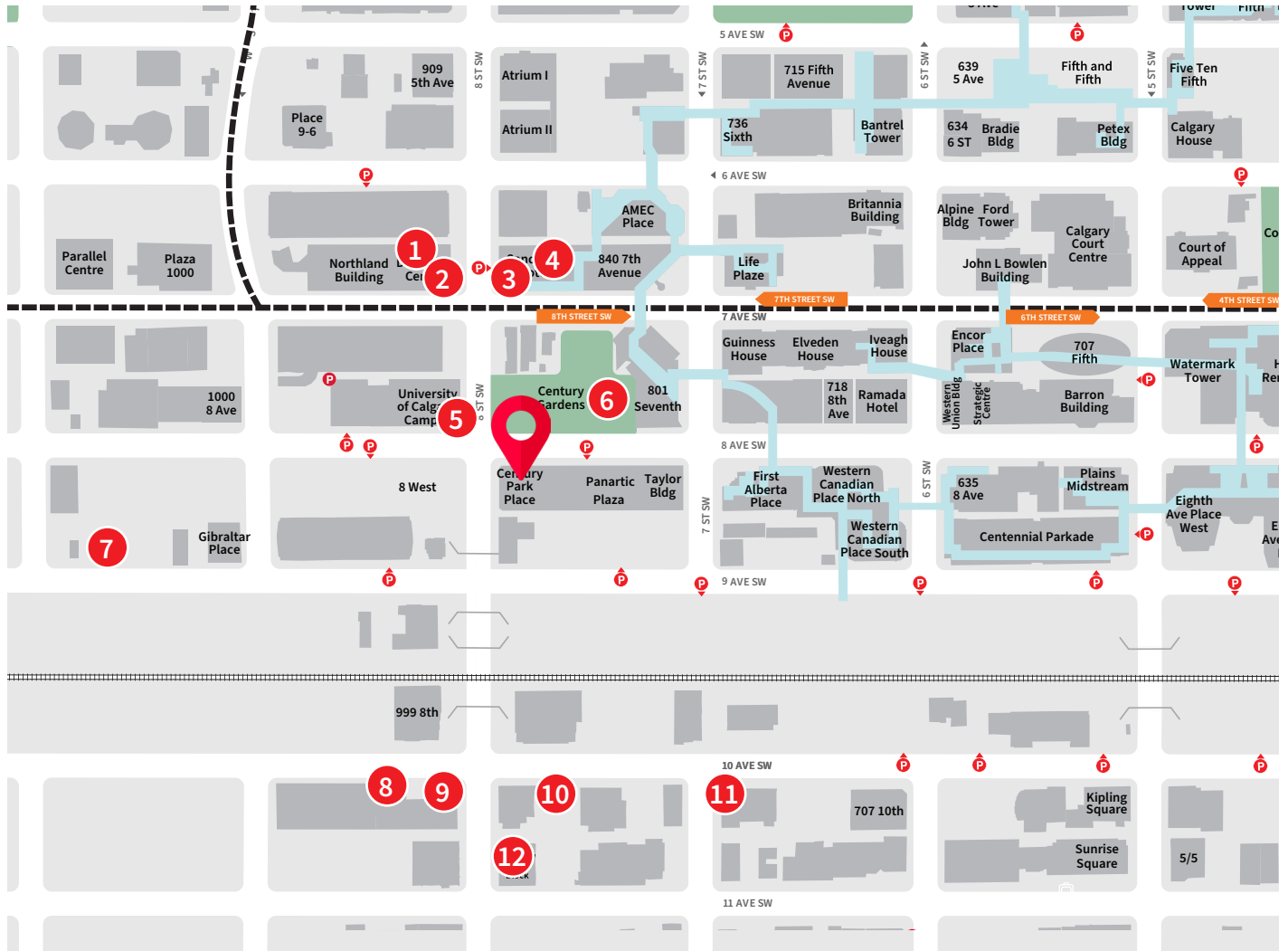
Operating Costs \$17.06 (2026)

TIA Negotiable

Parking \$450.00 per stall per month
1 per 1,800 sf

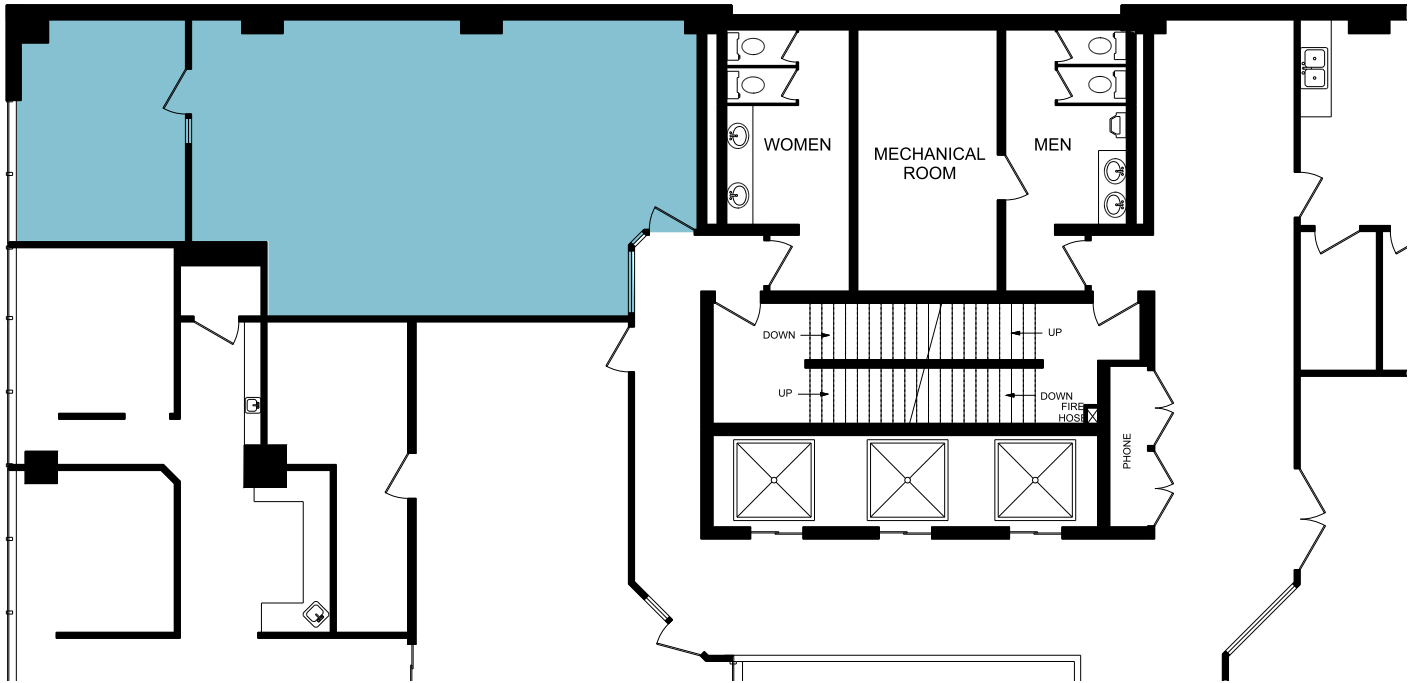


Location and Amenities

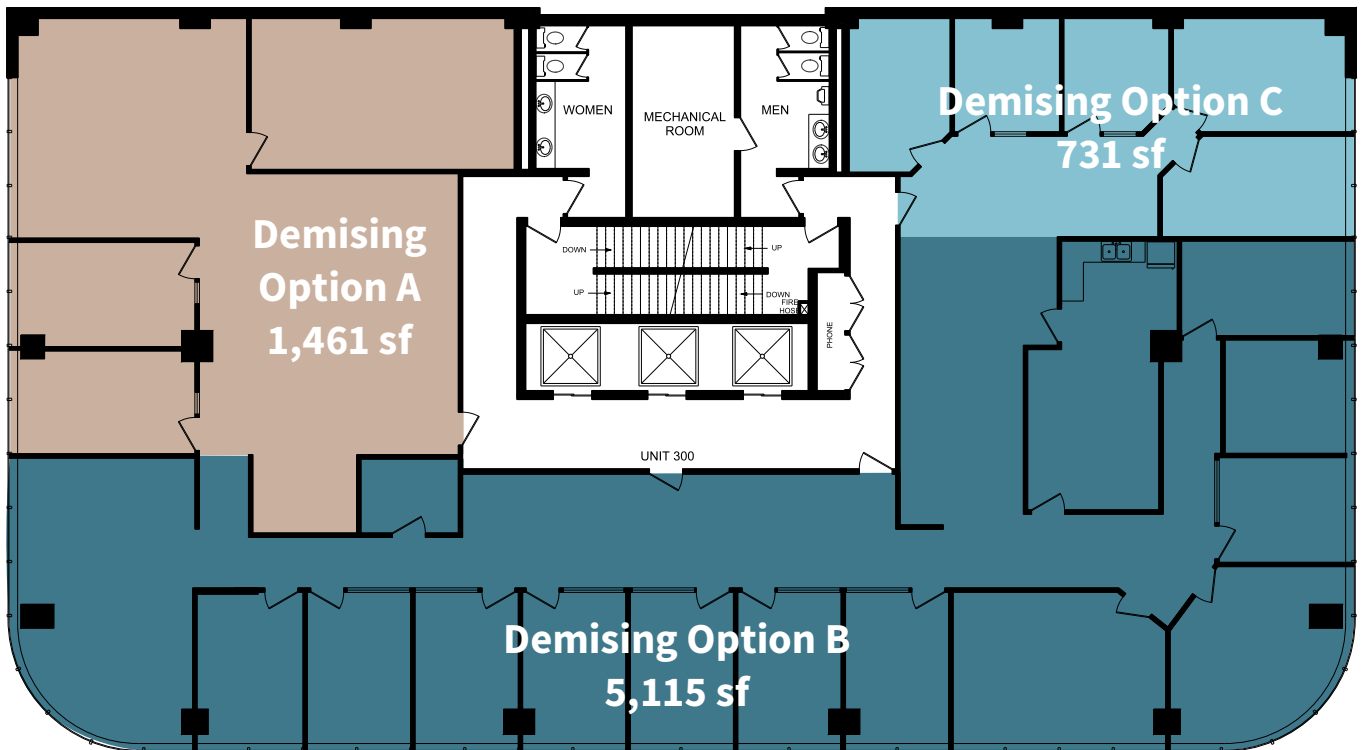


- | | | | | | |
|---|---------------|---|-----------------------|----|--------------------------|
| 1 | Tim Hortons | 5 | Wave's Coffee | 9 | Sucre Patisserie & Cafe. |
| 2 | Canada Post | 6 | Century Gardens | 10 | Holy Grill |
| 3 | Moxie's | 7 | Enterprise Rent-A-Car | 11 | Bridgette Bar |
| 4 | Sandman Hotel | 8 | Wakado Ramen | 12 | Bonterra Trattoria |

Floor 2 | 905 sf

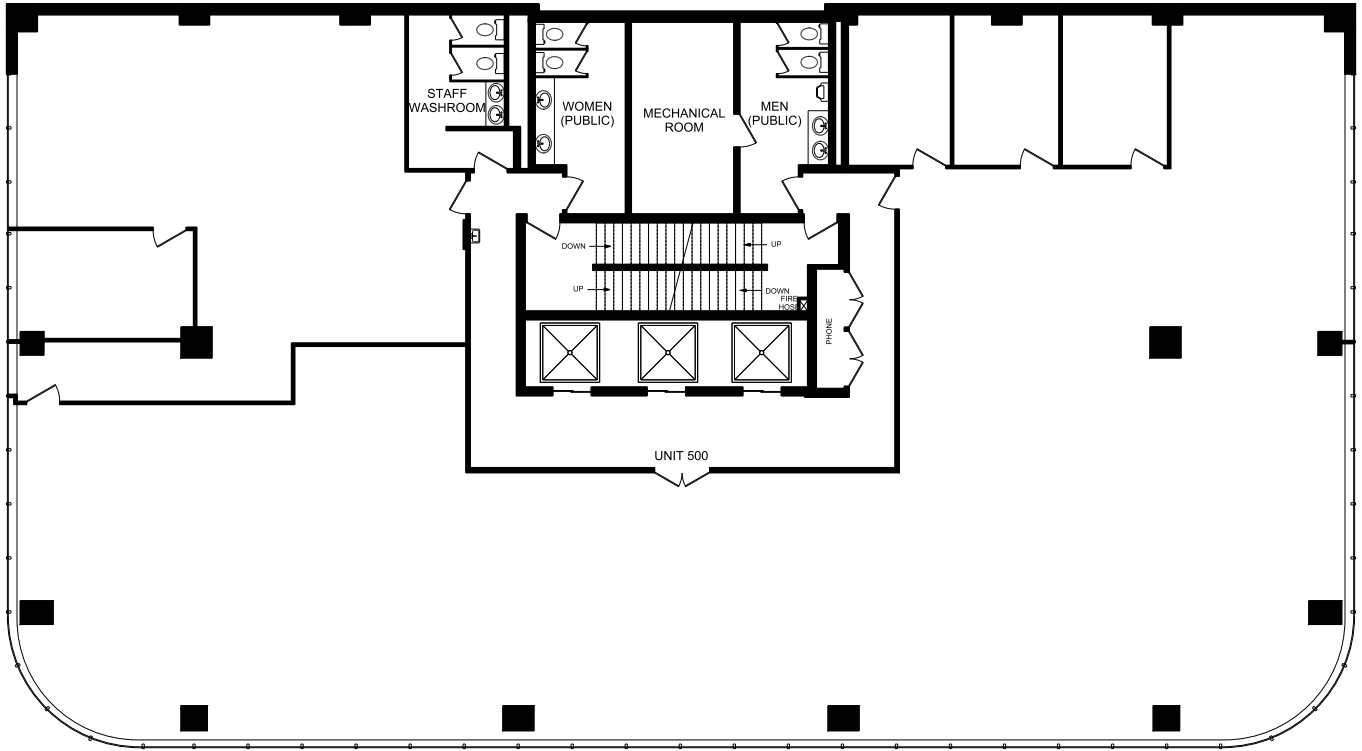


Floor 3 | 7,307 sf



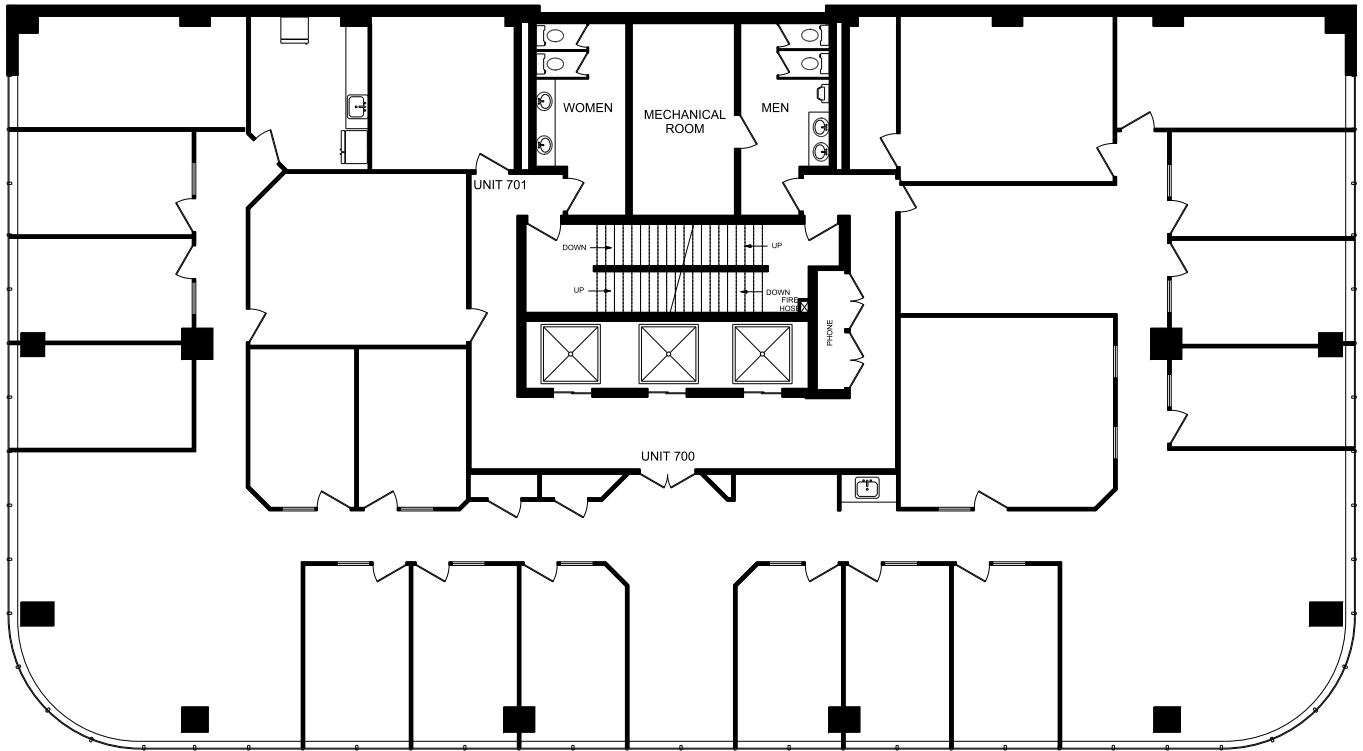
Floor 5 | 7,523 sf

Demising Options Available



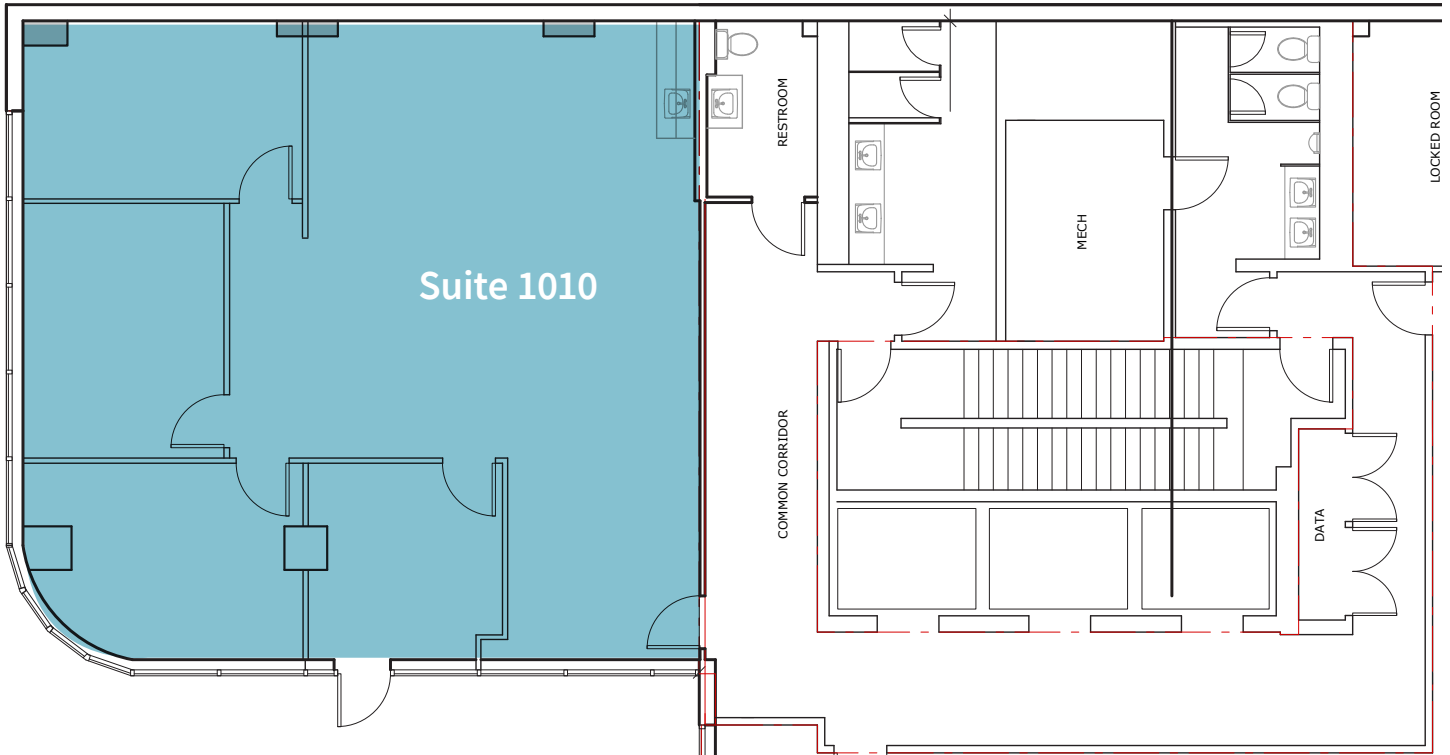
Floor 7 | 7,320sf

Demising Options Available



Floor 10 | 1,950 sf

New Show Suite



OFFICE

Kara Dusseldorp

Associate Vice President

kara.dusseldorp@jll.com

403 456 2348

James McKenzie

Vice President

james.mckenzie@jll.com

403 456 8100

JLL Calgary

Suite 3900, 855 2nd Avenue SW

Calgary, AB

jll.ca