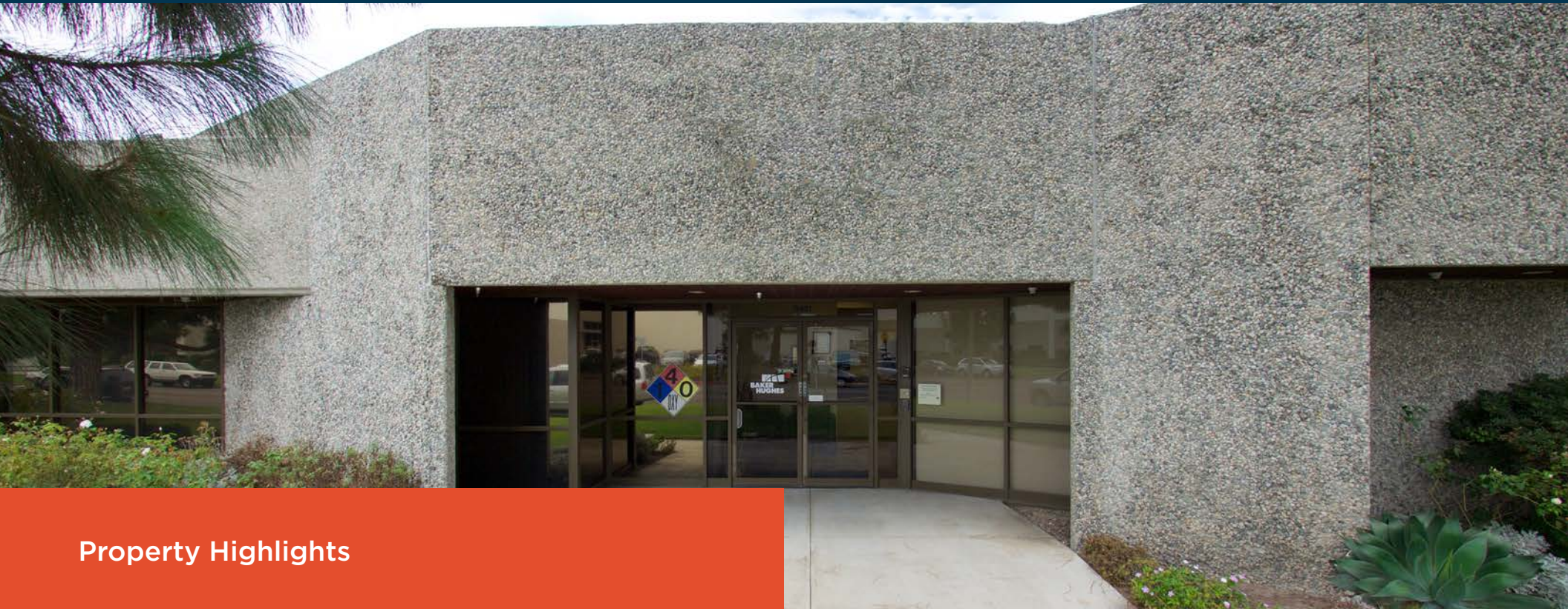




+36,354 SF AVAILABLE FOR SALE

**PREMIER WAREHOUSE/MANUFACTURING BUILDING AVAILABLE
5421 Argosy Avenue | Huntington Beach, CA 92649**





Property Highlights

- **+36,354 SF building on a \pm 1.96 acre parcel**
- **+5,898 SF of single-story office space**
- **+30,456 SF of warehouse space**
- **18' warehouse clearance**
- **6 grade level doors**
- **Fire sprinkler system**
- **+70 parking stalls**
- **Large secured yard**
- **Heavy power supply***
- **3 overhead cranes**

**The property has two panels; 1200amps and 400amps – both at 277/480V. Buyer to verify electrical load, upstream electrical capacity, and transformation with the public utility (Southern California Edison).*







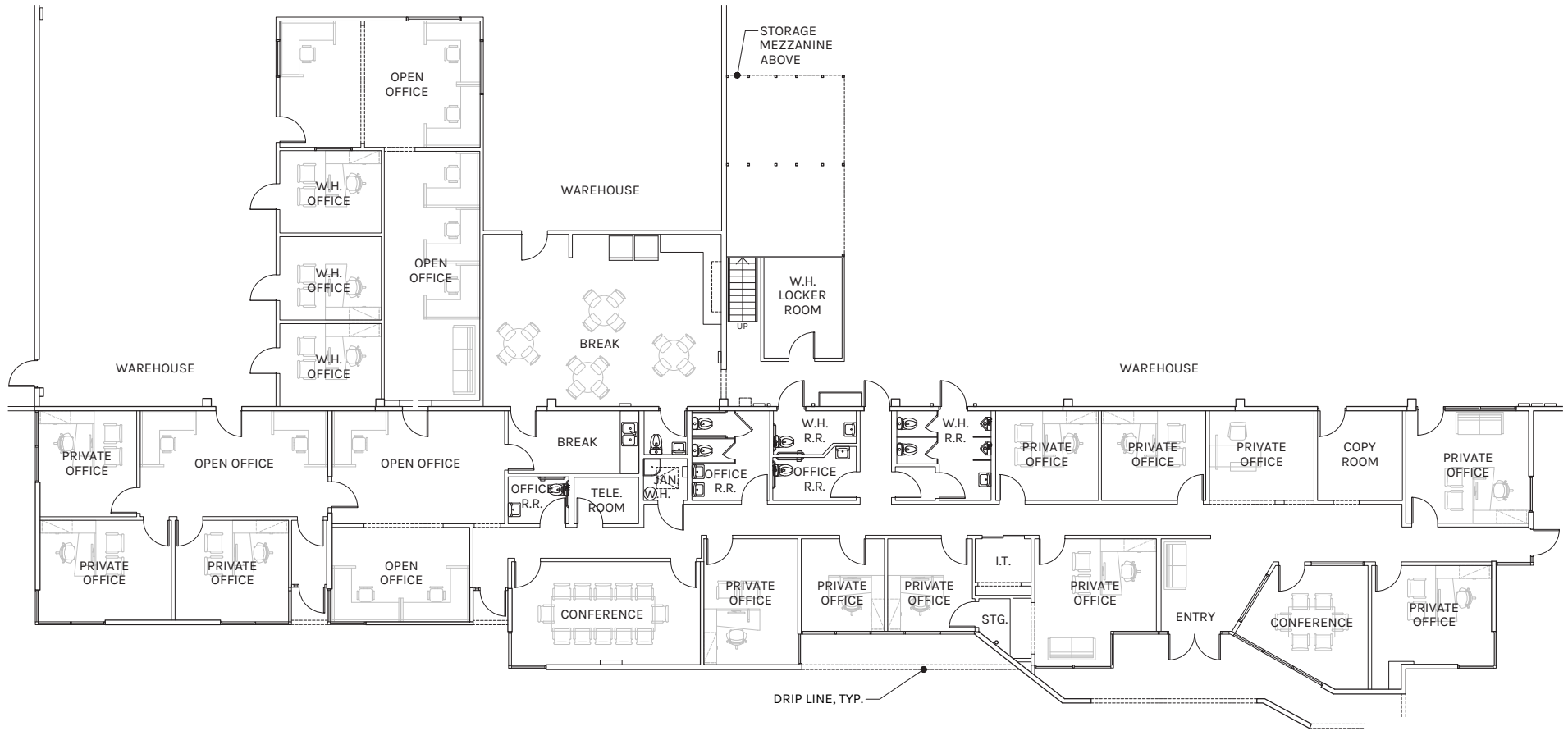
PLAN LEGEND	
	GRADE LEVEL DOOR SYMBOL
	DOCK HIGH DOOR SYMBOL

WAREHOUSE
+30,456 SF

OFFICE
+5,898 SF

TOTAL
+36,354 SF

PLAN LAYOUT SUBJECT TO FIELD CONDITIONS AND MAY DIFFER FROM PLAN AS SHOWN. ALL INFORMATION PRESENTED ON THIS DRAWING IS PRESUMED TO BE ACCURATE, HOWEVER TENANT SHOULD VERIFY PERTINENT INFORMATION PRIOR TO COMMITTING TO A LEASE. ANY FURNITURE OR APPLIANCES SHOWN ON PLAN ARE FOR CONCEPT ONLY AND WILL BE TENANT PROVIDED.



SCALE 3/8" = 1'-0"

WAREHOUSE
±30,456 SF

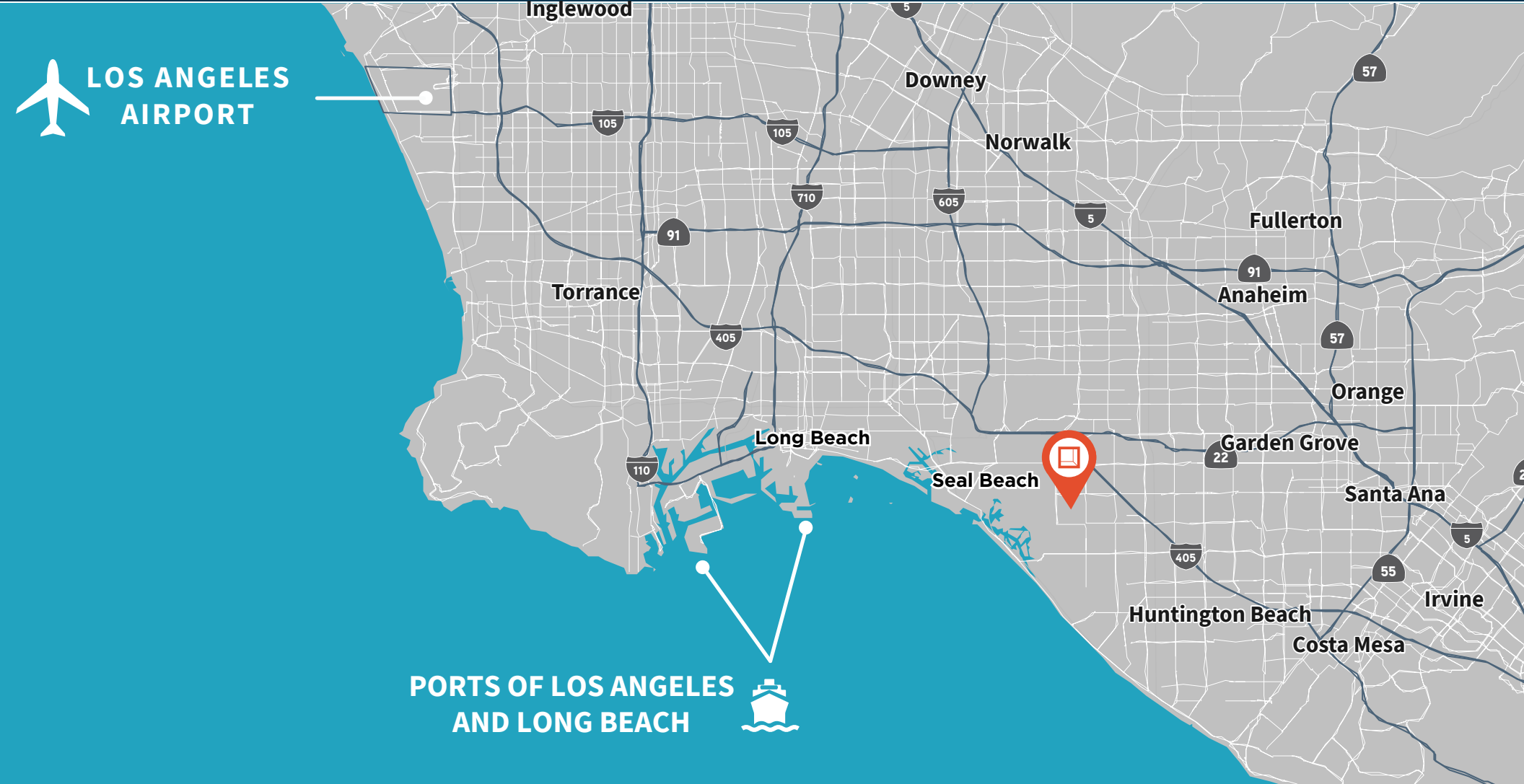
OFFICE
±5,898 SF

TOTAL
±36,354 SF

PLAN LAYOUT SUBJECT TO FIELD CONDITIONS AND MAY DIFFER FROM PLAN AS SHOWN. ALL INFORMATION PRESENTED ON THIS DRAWING IS PRESUMED TO BE ACCURATE, HOWEVER TENANT SHOULD VERIFY PERTINENT INFORMATION PRIOR TO COMMITTING TO A LEASE. ANY FURNITURE OR APPLIANCES SHOWN ON PLAN ARE FOR CONCEPT ONLY AND WILL BE TENANT PROVIDED.

Location

5421 ARGOSY AVE



1.4 Miles
to I-405 freeway

2.2 Miles
to 22 freeway

4.9 Miles
to I-605 freeway

9.5 Miles
to 55 freeway

25 Miles
to LAX

12.7 Miles
to Ports of LA & Long Beach



**Rexford
Industrial**

Sale Contacts

STEVE WAGNER
Senior Managing Director
949.885.2923
steve.wagner@jll.com
LIC #01314652

LOUIS TOMASELLI
Executive Managing Director
949.885.2985
louis.tomaselli@jll.com
LIC #00904844

ZACH NILES
Senior Managing Director
949.885.2922
zach.niles@jll.com
LIC #01311753

BRENDAN BRADY
Senior Associate
949.930.7975
brendan.brady@jll.com
LIC #02147986



17877 Von Karman Ave
Suite 500
Irvine, CA 92614

jll.com

Broker Disclaimer

Although information has been obtained from sources deemed reliable, JLL does not make any guarantees, warranties or representations, express or implied, as to the completeness or accuracy as to the information contained herein. Any projections, opinions, assumptions or estimates used are for example only. There may be differences between projected and actual results, and those differences may be material. JLL does not accept any liability for any loss or damage suffered by any party resulting from reliance on this information. If the recipient of this information has signed a confidentiality agreement with JLL regarding this matter, this information is subject to the terms of that agreement.

©2026. Jones Lang LaSalle IP, Inc. All rights reserved.