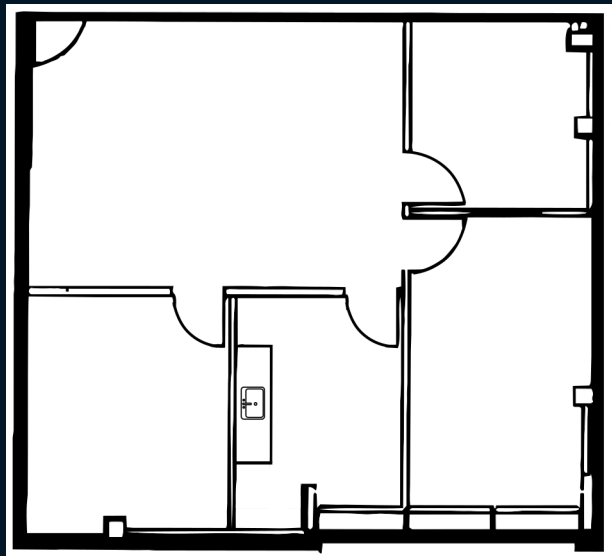


For sublease



Westpark Business Park Building I - Suite 200 8415 154th Ave NE Redmond, WA

- 1,082 SF of office space available now
- Sublease term through 11/30/2028
- Three private offices and a kitchenette



Dote Coffee in
Building Q



EV charging
available



Access to tenant amenity
center in Building H



Bailey Hallis
bailey.hallis@jll.com
+1 (206) 777 5203

Bode Maurer
bode.maurer@jll.com
+1 (425) 647 1140

jll.com

Suite 200

8415 154th Ave NE, Redmond



Location Highlights

Located within 5 minutes of Redmond Town Center, Westpark Business Park offers easy access to Redmond's retail, dining, and transit amenities.

