

425  
CALIFORNIA

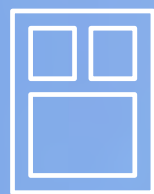


# Beyond the Office

Built, owned & operated by the Cahill Family,  
shaping San Francisco since 1911.



Class A  
building



Distinctive  
window line



Sidecore  
floor plates



Modern  
lobby



Centrally  
located



Secured bike  
parking





**Incredible Bay Views**

# In the Heart of the North Financial District

425 California is located on the historic and bustling California Street, just steps away from San Francisco's best dining, retail and entertainment.

## GYMS & FITNESS

**EQUINOX**

1 BLOCK

**RUMBLE**

2 BLOCKS

**BODYROK**

2 BLOCKS

**Bay Club**

2 BLOCKS

## RESTAURANTS



**THE VAULT**  
STEAKHOUSE

2 BLOCKS



2 BLOCKS

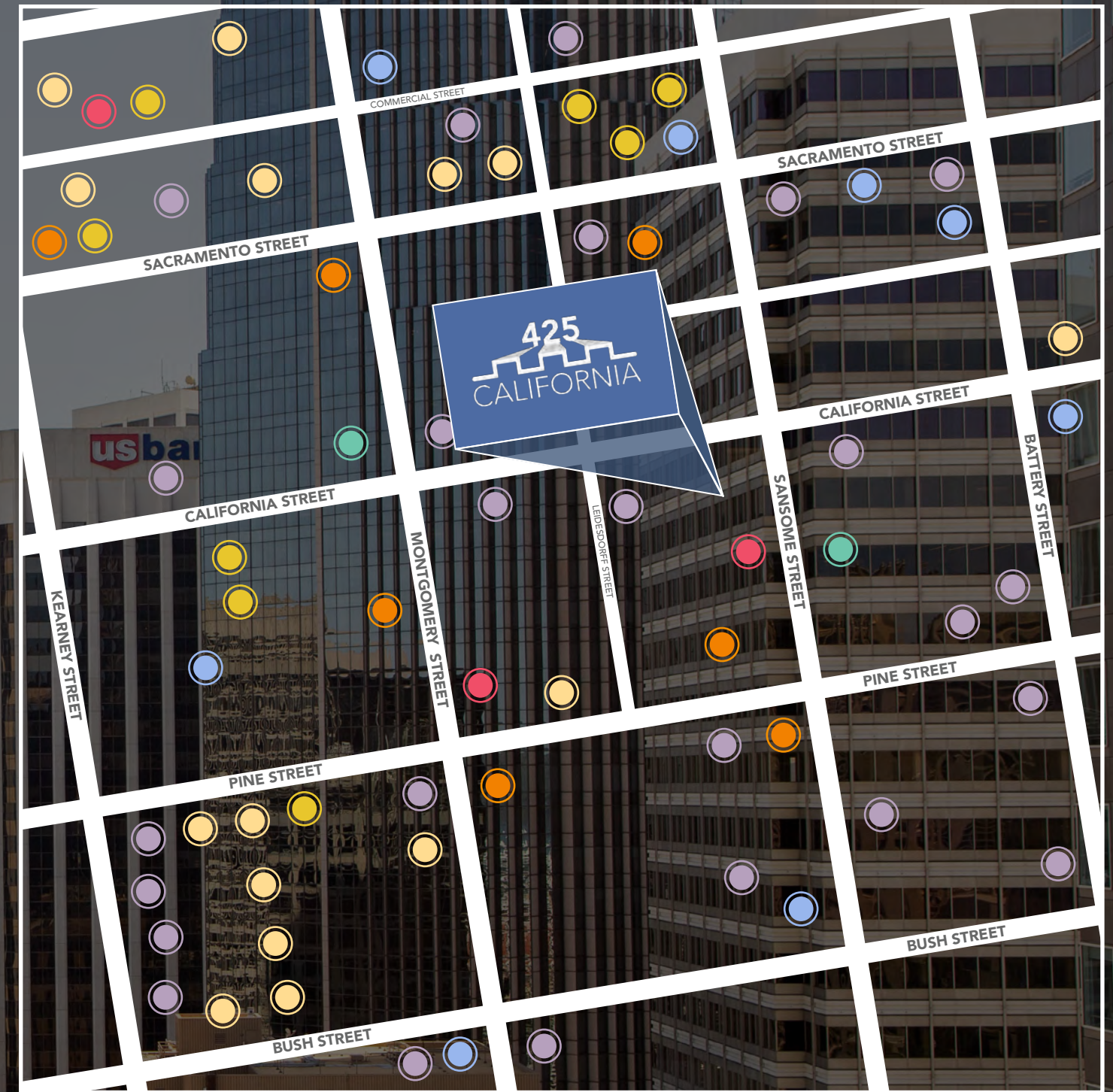


2 BLOCKS



1 BLOCK

Restaurants Quick Bites Cocktails Cafés Gyms Hotels Shopping



## Public Transportation



Embarcadero BART Station  
4-minute walk



Montgomery & Battery Muni Station  
3-minute walk

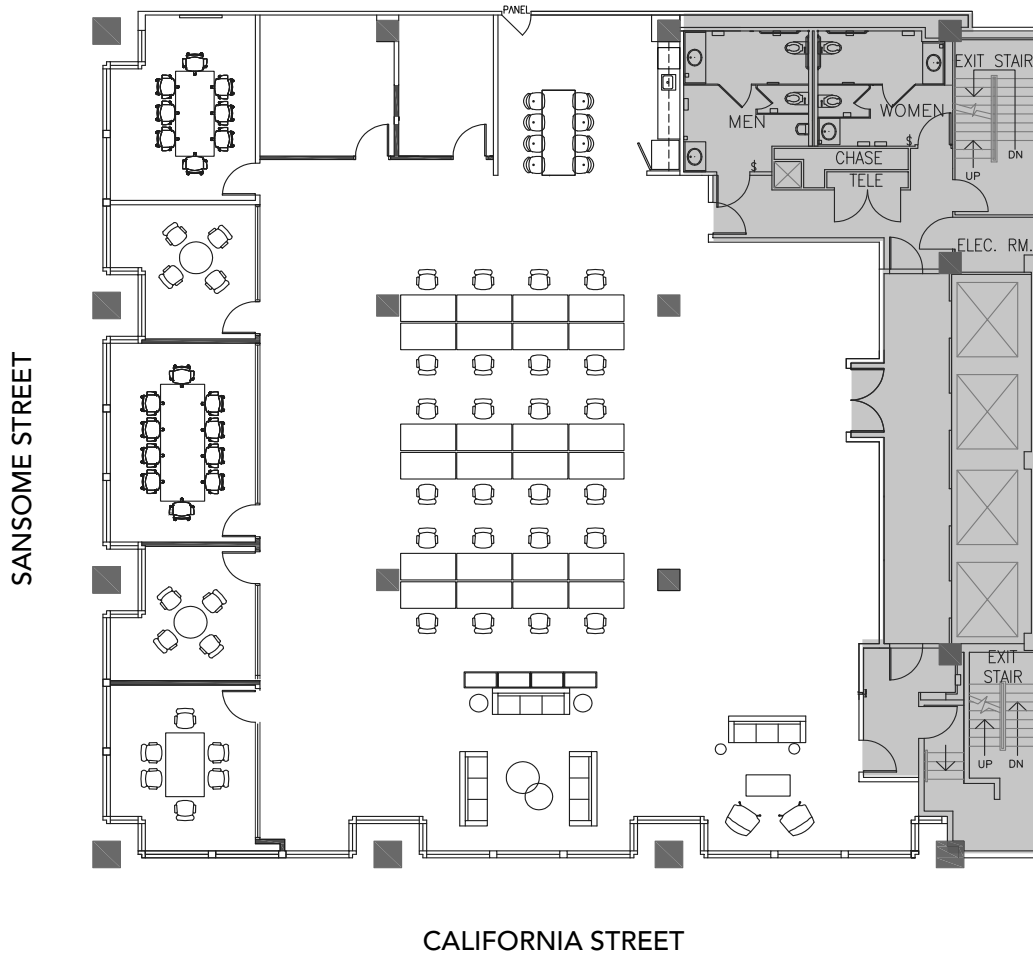


San Francisco Ferry Building  
7-minute walk



Sacramento & Battery Muni Station  
2-minute walk

# Suite 200 - 6,527 SF



## Suite 200

### Available now

- Fully furnished full floor
- Mostly open floorplan
- 24 sit-stand workstations
- 6 office/meeting rooms
- Kitchen
- Copy/break room
- Floor to ceiling glass
- Cable car outlooks



# Suite 500 - 5,014 RSF



## Suite 500

**Available 7/1/2026**

- 8 exterior private offices
- 1 large conference room
- Open space for desks
- Large copy/file room
- Kitchen

# Suite 1200 - 4,871 SF



## Suite 1200

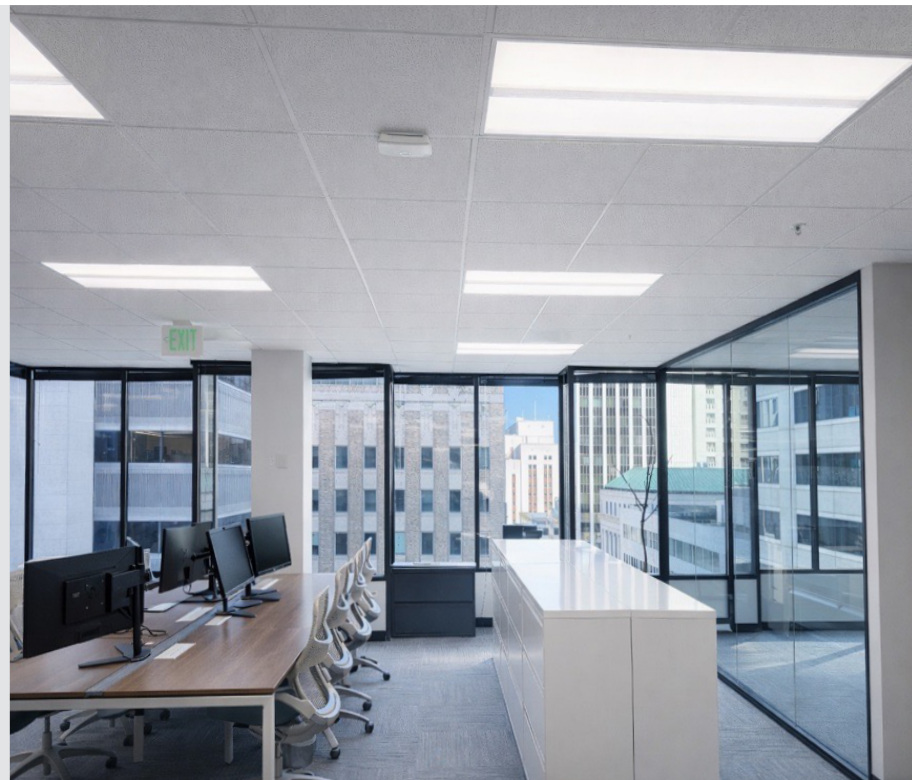
Available 10/1/2026

Fully furnished

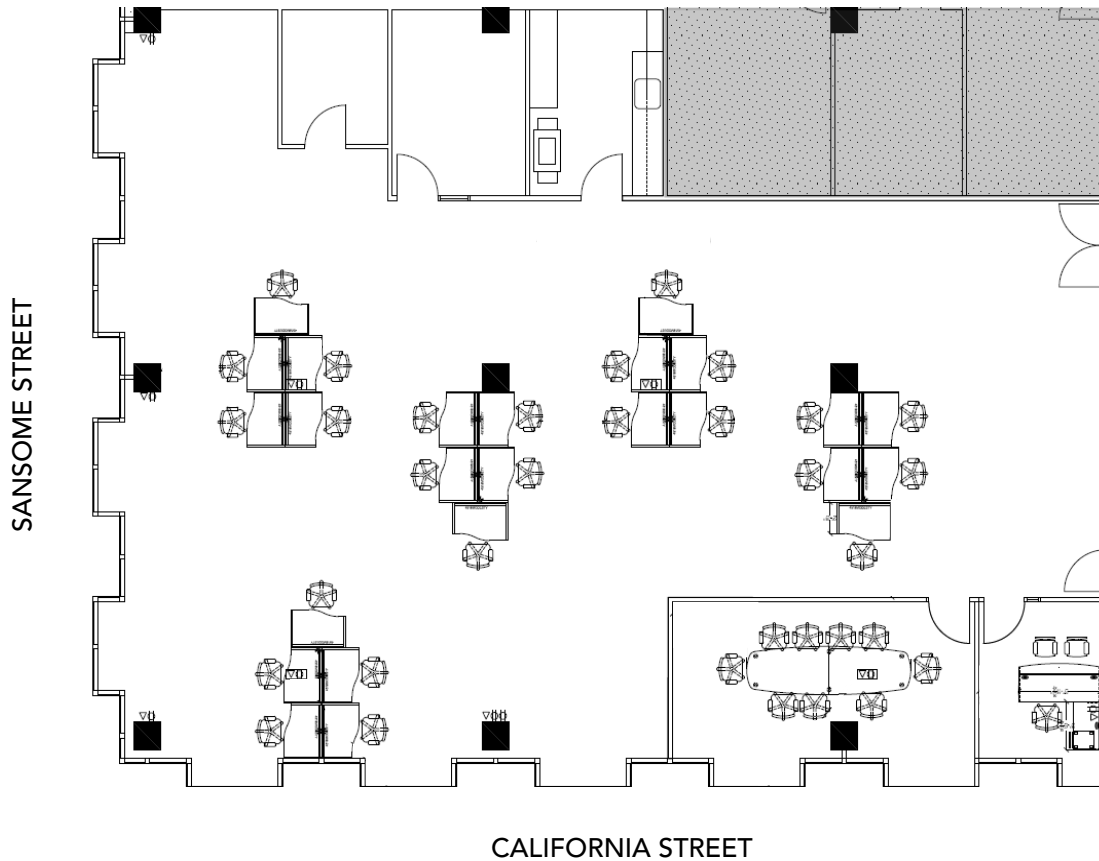
3 private offices/meeting rooms

Kitchen

Great natural light



# Suite 1300 - 4,498 SF



## Suite 1300

### Available now

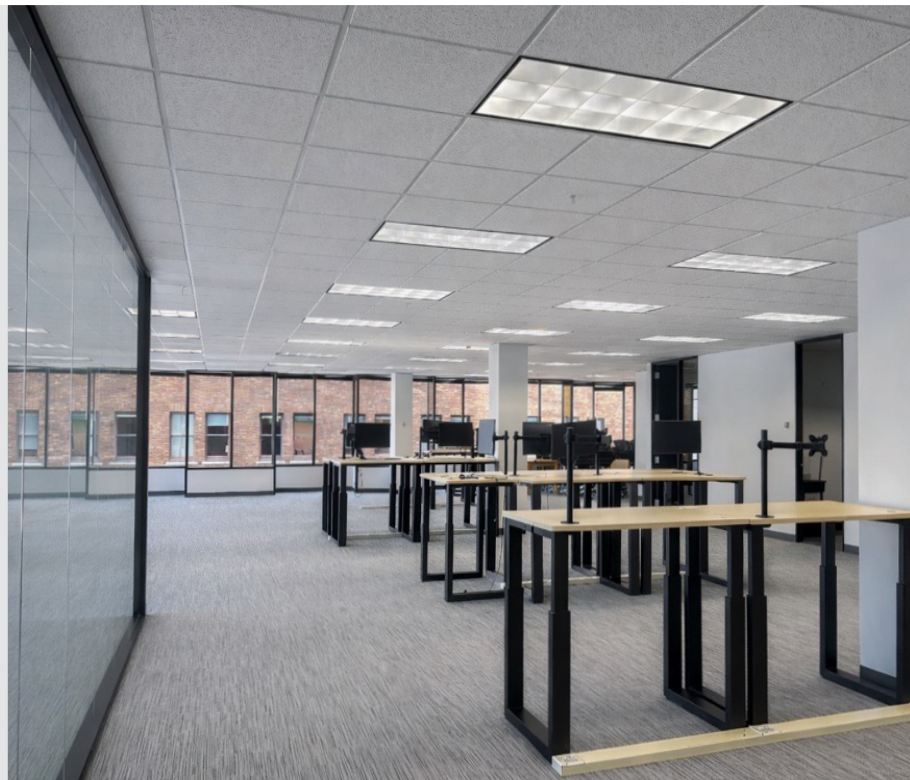
Mostly open floorplan

FF&E available

3 private offices/meeting rooms

Kitchen

Great natural light



# Suite 2600 - 7,276 RSF



## Suite 2600

**Available 9/1/2026**

- 8 Private offices
- 2 Large conference rooms
- 3 Small meeting rooms
- Large kitchen
- 2 Phone rooms
- Mother's room
- Open space for workstations

# 425



# CALIFORNIA

Built, owned & operated by the Cahill family,  
shaping San Francisco since 1911.

**Tom Doupe**

Senior Vice President  
+ 1 415 395 4933  
tom.doupe@jll.com  
RE License #01921218

**Teva Myatt**

Associate  
+ 1 415 395 7290  
teva.myatt@jll.com  
RE License #02198058



Although information has been obtained from sources deemed reliable, JLL does not make any guarantees, warranties or representations, express or implied, as to the completeness or accuracy as to the information contained herein. Any projections, opinions, assumptions or estimates used are for example only. There may be differences between projected and actual results, and those differences may be material. JLL does not accept any liability for any loss or damage suffered by any party resulting from reliance on this information. If the recipient of this information has signed a confidentiality agreement with JLL regarding this matter, this information is subject to the terms of that agreement. ©2026 Jones Lang LaSalle Brokerage, Inc. All rights reserved.