

1311 GLENDALE BOULEVARD

ECHO PARK



RETAIL/RESTAURANT OPPORTUNITIES IN THE HEART OF ECHO PARK

JONES LANG LASALLE BROKERAGE, INC.
REAL ESTATE LICENSE #:01856260



ABOUT



THE



PROPERTY



THE DETAILS

**ADDRESS:**

1311 Glendale Blvd., Los Angeles, CA
(Echo Park)

**AVAILABILITY:**

Suite F (+/- 1,002 SF),
Suite H (+/- 2,082 SF)

**POSSESSION:**

Immediate

**PRICING:**

Upon Request

**CO-TENANTS:**

Tora Japanese Kitchen, California
Credit Union (Coming Soon), Pollo
Campero Drive Thru, Hard
Times Pizza

HIGHLIGHTS:

Prominent corner of Glendale Blvd.
and Sunset Blvd., near Dodger
Stadium and Echo Park Lake.



Nearby tenants include Sprouts
Farmers Market, Canyon Coffee,
Goop Kitchen, Vons, and the
Silverlake Flea Market.

Over 200 feet of frontage of
Glendale Blvd., over 30 onsite
surface parking spaces available.

Site Plan



Area Map



IDEAL RETAIL DEMOGRAPHICS WITHIN 3 MILES

Demographics

\$112,432

Average House Hold Income

78%

College Degree
or Higher

325,578

Daytime Population

\$4.1_B

Retail Spending

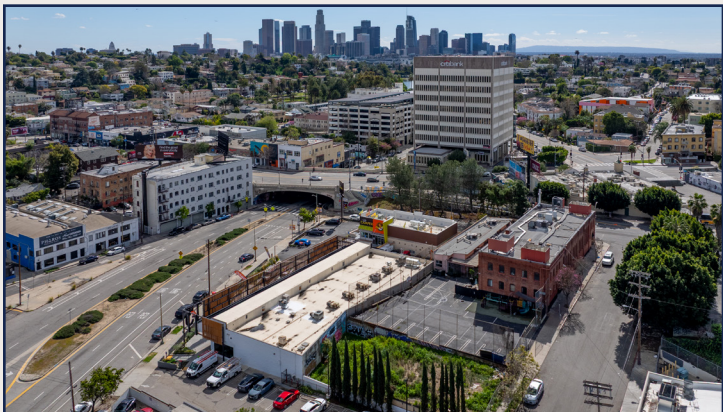
34.2

Median Age

\$1.3_M

Median Home Value





1311 GLENDALE BOULEVARD

CONTACT US

MATTHEW FAINCHTEIN

Managing Director

matthew.fainchtein@jll.com

310 430 2548

CA LIC. 01503546

RYAN HAWLEY

Vice President

ryan.hawley@jll.com

310 407 2160

CA LIC. 02146998



JONES LANG LASALLE BROKERAGE, INC.
REAL ESTATE LICENSE #: 01856260

Although information has been obtained from sources deemed reliable, neither Owner nor JLL makes any guarantees, warranties or representations, express or implied, as to the completeness or accuracy as to the information contained herein. Any projections, opinions, assumptions or estimates used are for example only. There may be differences between projected and actual results, and those differences may be material. The Property may be withdrawn without notice. Neither Owner nor JLL accepts any liability for any loss or damage suffered by any party resulting from reliance on this information. If the recipient of this information has signed a confidentiality agreement regarding this matter, this information is subject to the terms of that agreement. ©2026. Jones Lang LaSalle IP, Inc. All rights reserved.