

±1,216 to ±58,000 SF of
Office Space Available



WWW.805VETERANS.COM

Only Office Building of its Kind in RWC

CONTACT US

Chris Blom | Executive Vice President | +1 650 480 2057 | chris.blom@jll.com | LIC #02031205
Ben Paul | Vice Chairman | +1 650 401 2123 | ben.paul@cushwake.com | LIC #01210872





WWW.805VETERANS.COM

PROPERTY HIGHLIGHTS

- Full Floors Available with Expansion Options
- Veterans Blvd Signage Available
- Directly Across from SMC Government Center, Courthouse & RWC Town Hall
- Short Walk to CalTrain, Restaurants & Coffee Shops
- Surrounded by Nearly 4 Acres of Landscaped Open Space and 100's of Free Ground-Level Parking Spaces
- Easy Access to Hwy 101 & 20 Minute Drive to SFO
- On-Site Shared Conference Room
- On-Site Management, Maintenance, Construction, Data Wiring & Janitorial
- Simple Lease Form
- M2M Tenancy Possible



BLOCKS FROM DOWNTOWN REDWOOD CITY



ABUNDANCE OF RESTAURANTS & AMENITIES



COURTHOUSE SQUARE IN DOWNTOWN REDWOOD CITY

CONTACT US

Chris Blom | Executive Vice President | +1 650 480 2057 | chris.blom@jll.com | LIC #02031205
Ben Paul | Vice Chairman | +1 650 401 2123 | ben.paul@cushwake.com | LIC #01210872





Click on Suite # to View Floor Plan

FIRST FLOOR / ±24,177 SF Available

| SUITE # | SF | AVAILABILITY | VIRTUAL TOUR |
|---------------------|--------|--------------|--------------|
| 100 | ±7,286 | Now | - |
| 101 | ±3,980 | Now | - |
| 102 | ±5,834 | Now | - |
| 103 | ±3,841 | Now | - |
| 109 | ±3,236 | Now | - |

SECOND FLOOR / ±5,671 SF Available

| SUITE # | SF | AVAILABILITY | VIRTUAL TOUR |
|---------------------|--------|--------------|----------------------|
| 202 | ±4,455 | Now | - |
| 230 | ±1,216 | Now | 360° |

THIRD FLOOR / ± 28,152 SF Available

| SUITE # | SF | AVAILABILITY | VIRTUAL TOUR |
|---------------------------|---------|--------------|----------------------|
| 300 | ±6,572 | Now | 360° |
| 320 | ±6,084 | Now | - |
| 300 + 320 | ±12,656 | Now | - |
| 301 | ±1,729 | Now | - |
| 303 | ±2,576 | Now | - |
| 305 | ±3,773 | Now | - |
| 307 | ±7,418 | Now | - |



CONTACT US

Chris Blom | Executive Vice President | +1 650 480 2057 | chris.blom@jll.com | LIC #02031205
 Ben Paul | Vice Chairman | +1 650 401 2123 | ben.paul@cushwake.com | LIC #01210872



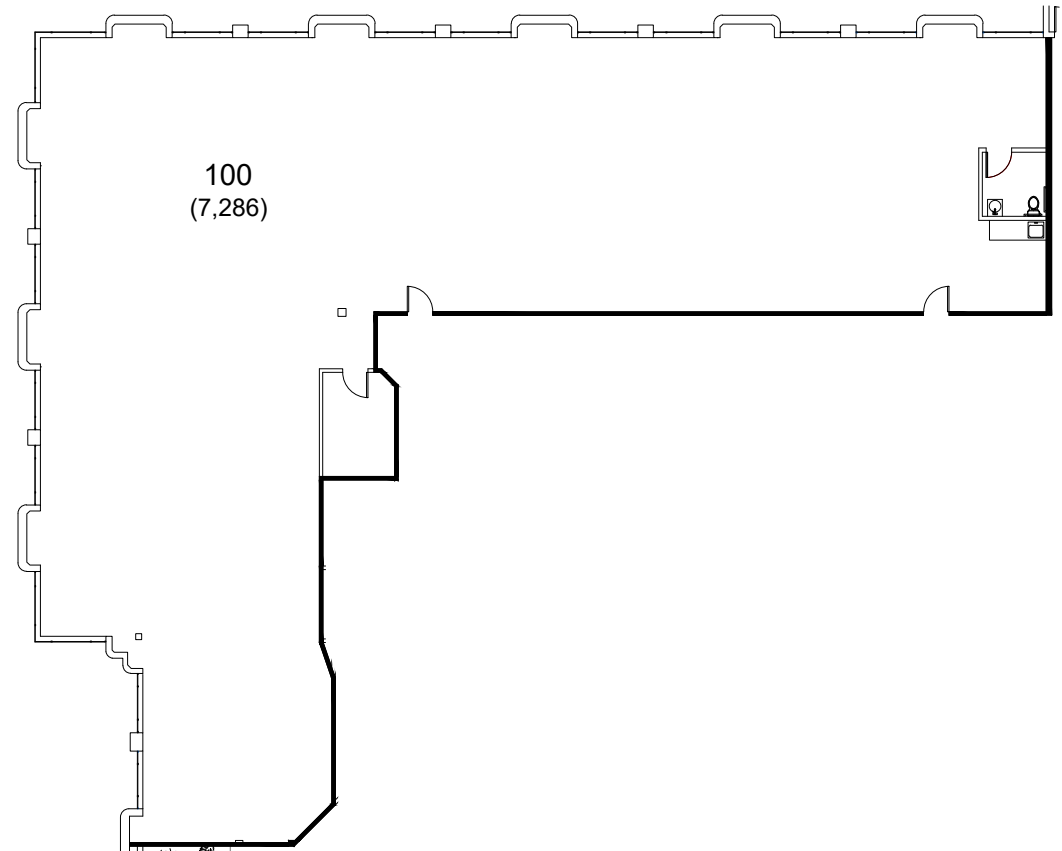


1st Floor

Suite 100 / ±7,286 SF

- Private Office
- Restroom
- Large Open Space
- Extensive In-Ground Plumbing
- Available Now

KEY PLAN



CONTACT US

Chris Blom | Executive Vice President | +1 650 480 2057 | chris.blom@jll.com | LIC #02031205
Ben Paul | Vice Chairman | +1 650 401 2123 | ben.paul@cushwake.com | LIC #01210872

[BACK TO AVAILABILITES](#)

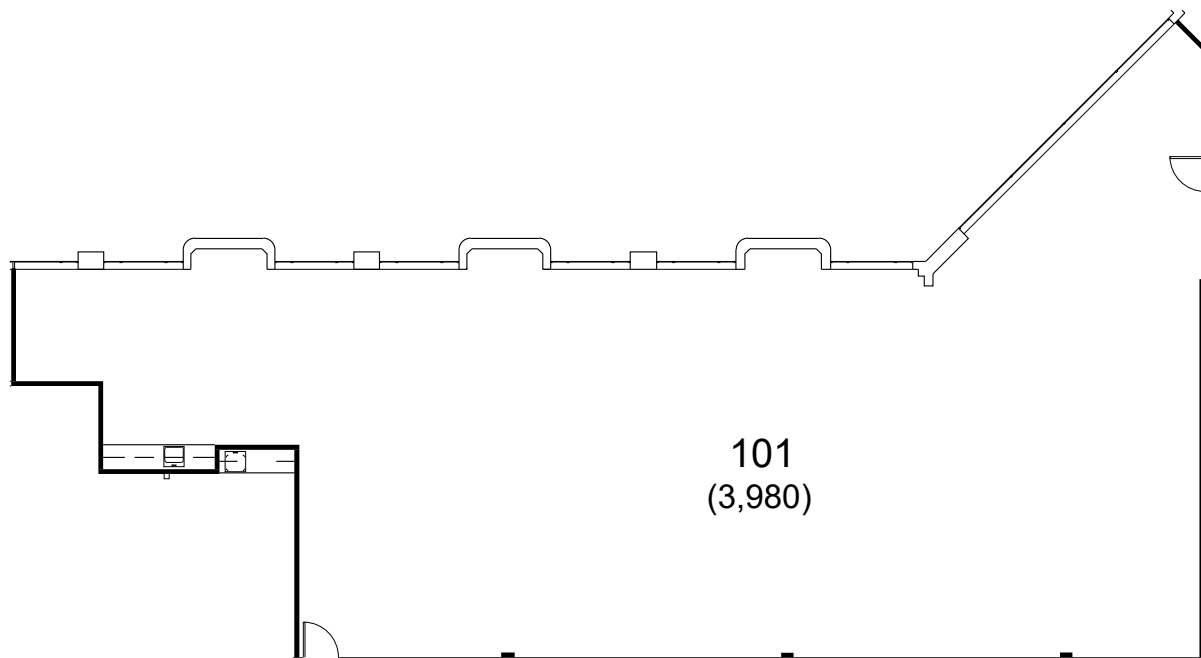




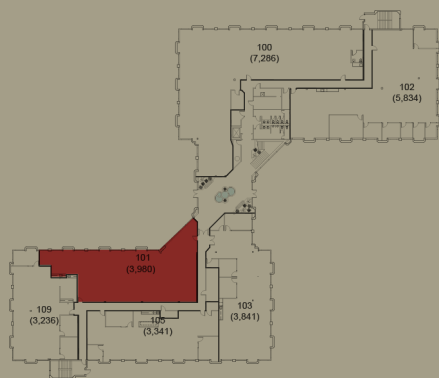
1st Floor

Suite 101 / ±3,980 SF

- Break Area
- Large Open Space
- Extensive In-Ground Plumbing
- Available Now



KEY PLAN



CONTACT US

Chris Blom | Executive Vice President | +1 650 480 2057 | chris.blom@jll.com | LIC #02031205
Ben Paul | Vice Chairman | +1 650 401 2123 | ben.paul@cushwake.com | LIC #01210872

[BACK TO AVAILABILITES](#)



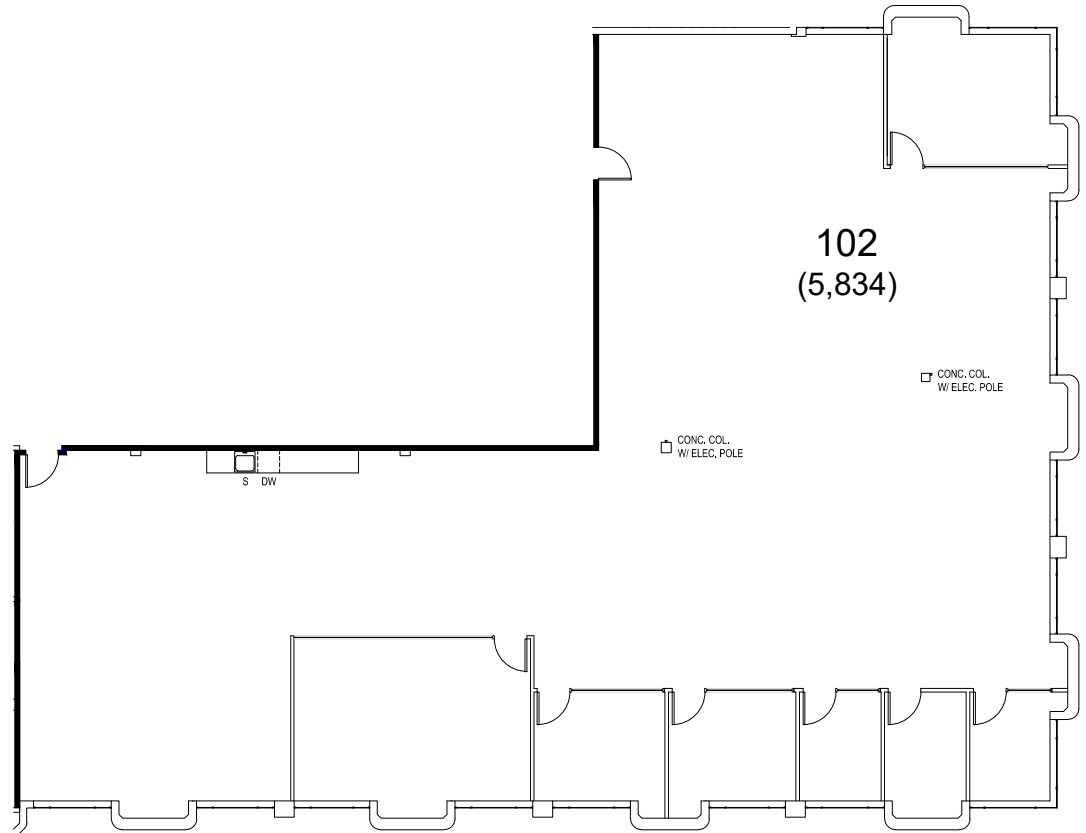
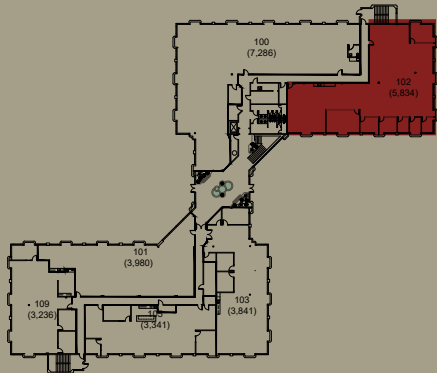


1st Floor

Suite 102 / ±5,834 SF

- Break Area
- Large Open Space
- Available Now

KEY PLAN



CONTACT US

Chris Blom | Executive Vice President | +1 650 480 2057 | chris.blom@jll.com | LIC #02031205
Ben Paul | Vice Chairman | +1 650 401 2123 | ben.paul@cushwake.com | LIC #01210872

[BACK TO AVAILABILITIES](#)



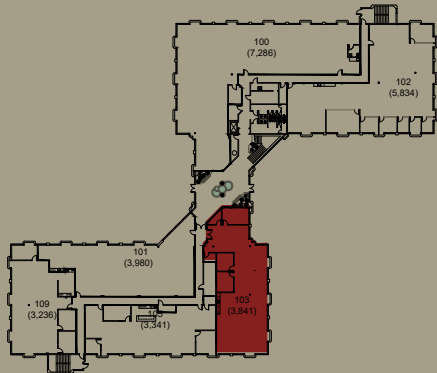


1st Floor

Suite 103 / ±3,841 SF

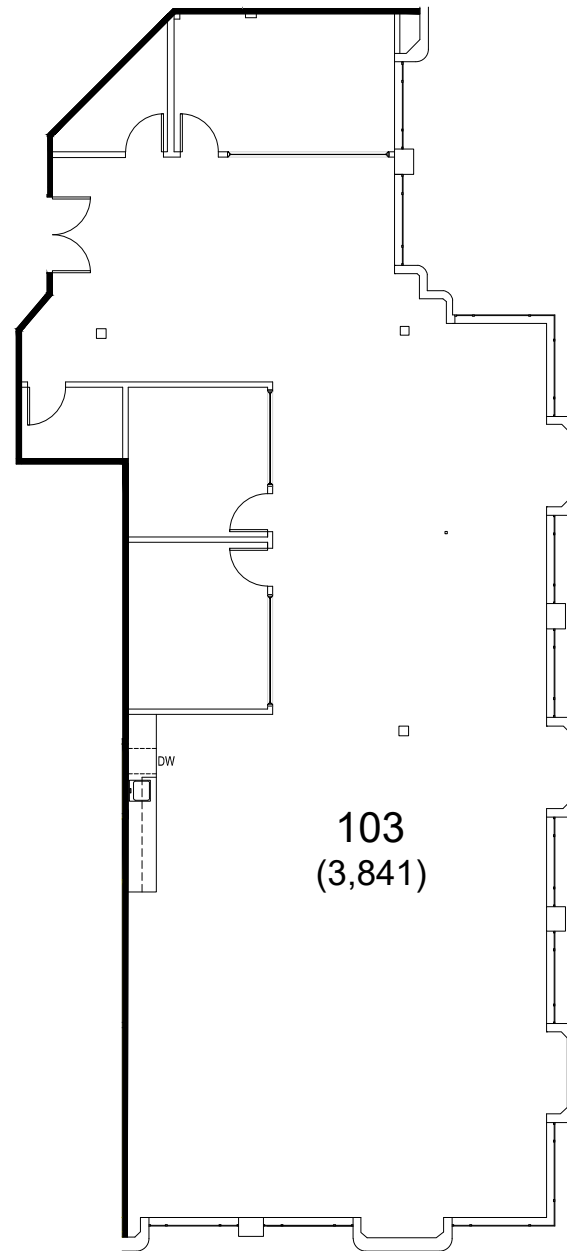
- 2 Private Offices
- Conference Room
- 2 Phone Rooms
- Break Area
- Large Open Space
- Available Now

KEY PLAN



CONTACT US

Chris Blom | Executive Vice President | +1 650 480 2057 | chris.blom@jll.com | LIC #02031205
Ben Paul | Vice Chairman | +1 650 401 2123 | ben.paul@cushwake.com | LIC #01210872



[BACK TO AVAILABILITIES](#)



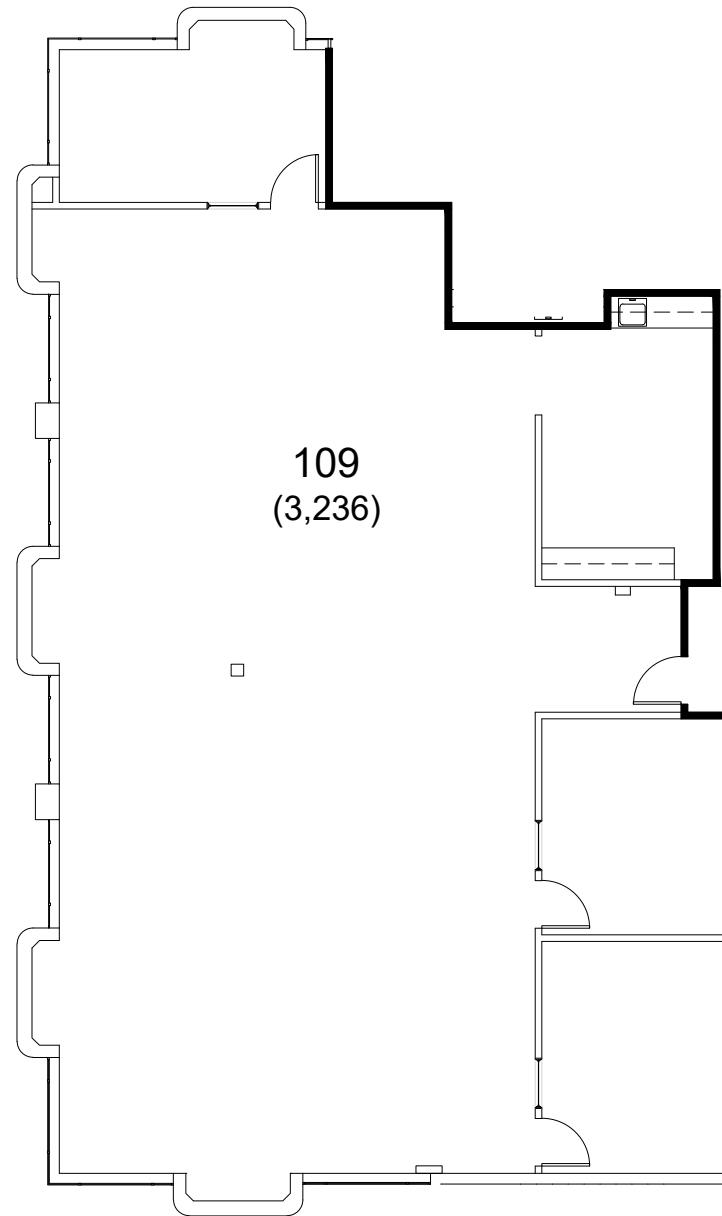


1st Floor

Suite 109 / ±3,236 SF

- 1 Conference Room
- 2 Private Offices
- Kitchenette

KEY PLAN



CONTACT US

Chris Blom | Executive Vice President | +1 650 480 2057 | chris.blom@jll.com | LIC #02031205
Ben Paul | Vice Chairman | +1 650 401 2123 | ben.paul@cushwake.com | LIC #01210872

[BACK TO AVAILABILITIES](#)

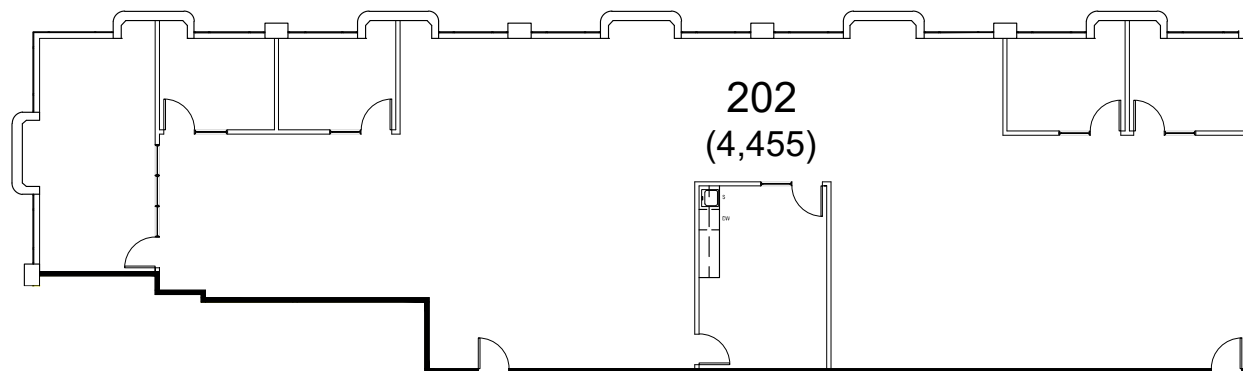




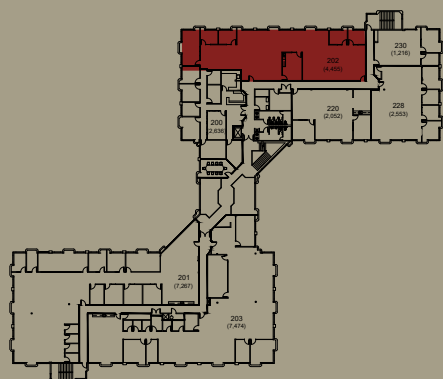
2nd Floor

Suite 202 / ±4,455 SF

- 4 Private Offices
- Conference Room
- Break Room
- Large Open Space
- Available Now



KEY PLAN



CONTACT US

Chris Blom | Executive Vice President | +1 650 480 2057 | chris.blom@jll.com | LIC #02031205
Ben Paul | Vice Chairman | +1 650 401 2123 | ben.paul@cushwake.com | LIC #01210872

[BACK TO AVAILABILITIES](#)

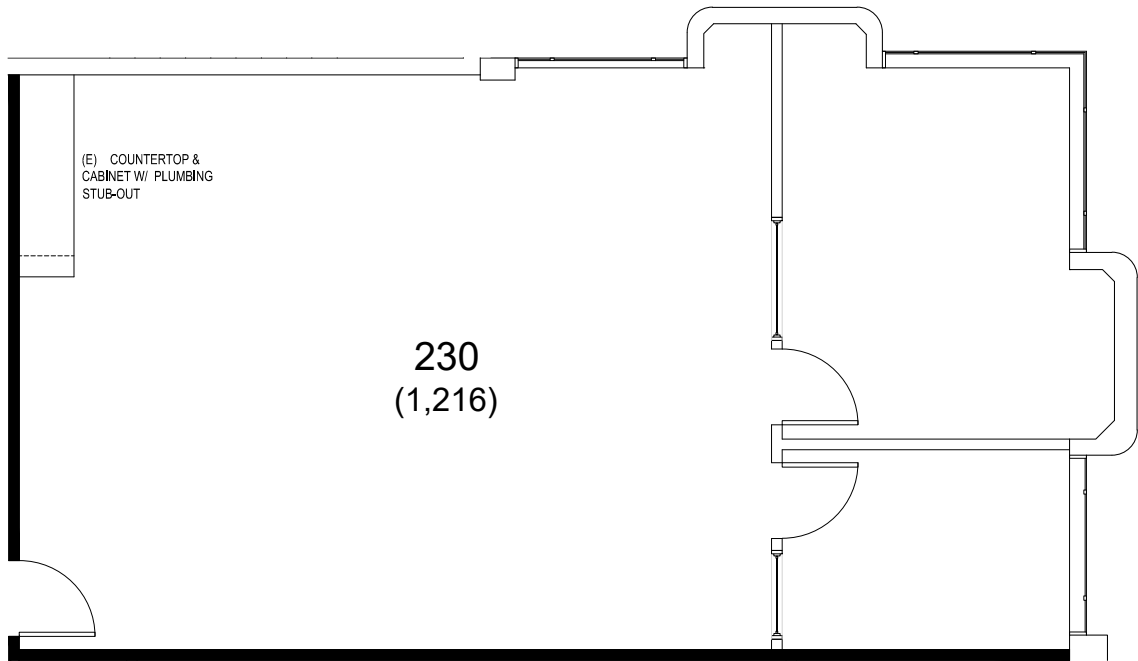




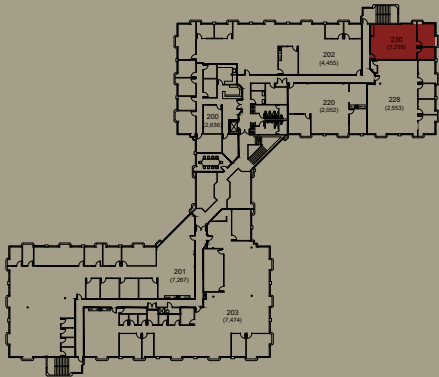
2nd Floor

Suite 230 / ±1,216 SF

- Private Office
- Conference Room
- Large Open Space
- Available Now



KEY PLAN



CONTACT US

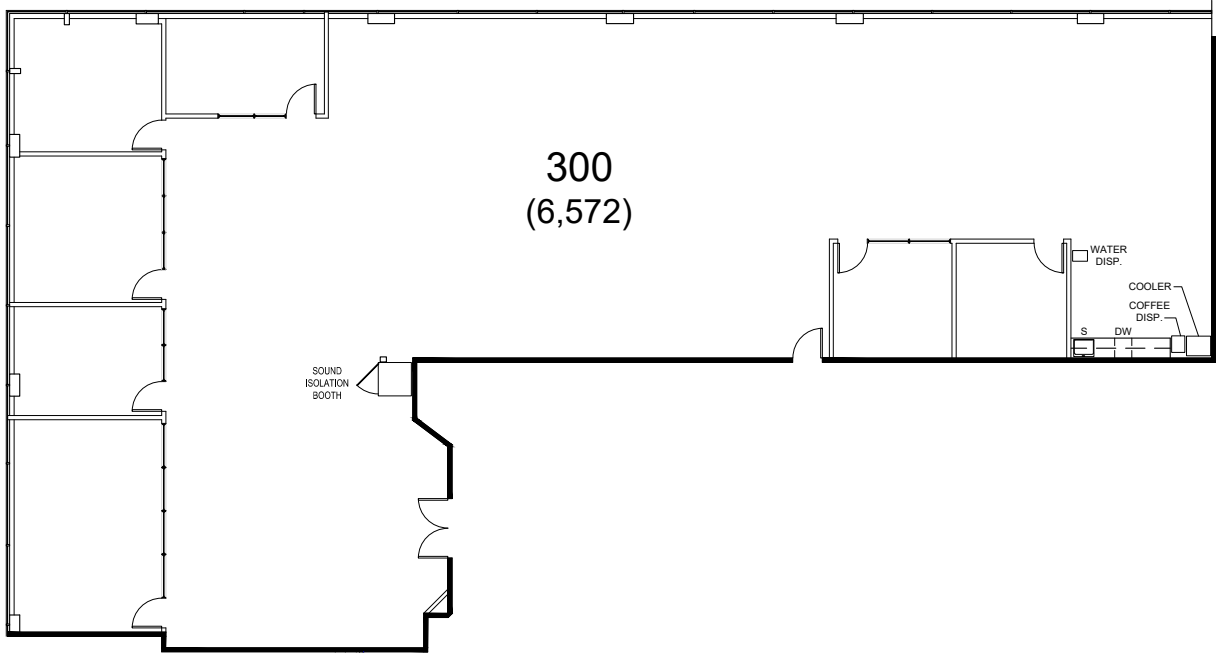
Chris Blom | Executive Vice President | +1 650 480 2057 | chris.blom@jll.com | LIC #02031205
 Ben Paul | Vice Chairman | +1 650 401 2123 | ben.paul@cushwake.com | LIC #01210872



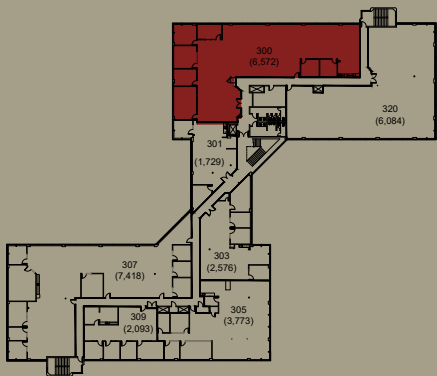
3rd Floor

Suite 300 / ±6,572 SF

- 6 Private Offices
- Conference Room
- Break Area
- Large Open Space
- Available Now



KEY PLAN



CONTACT US

Chris Blom | Executive Vice President | +1 650 480 2057 | chris.blom@jll.com | LIC #02031205
 Ben Paul | Vice Chairman | +1 650 401 2123 | ben.paul@cushwake.com | LIC #01210872

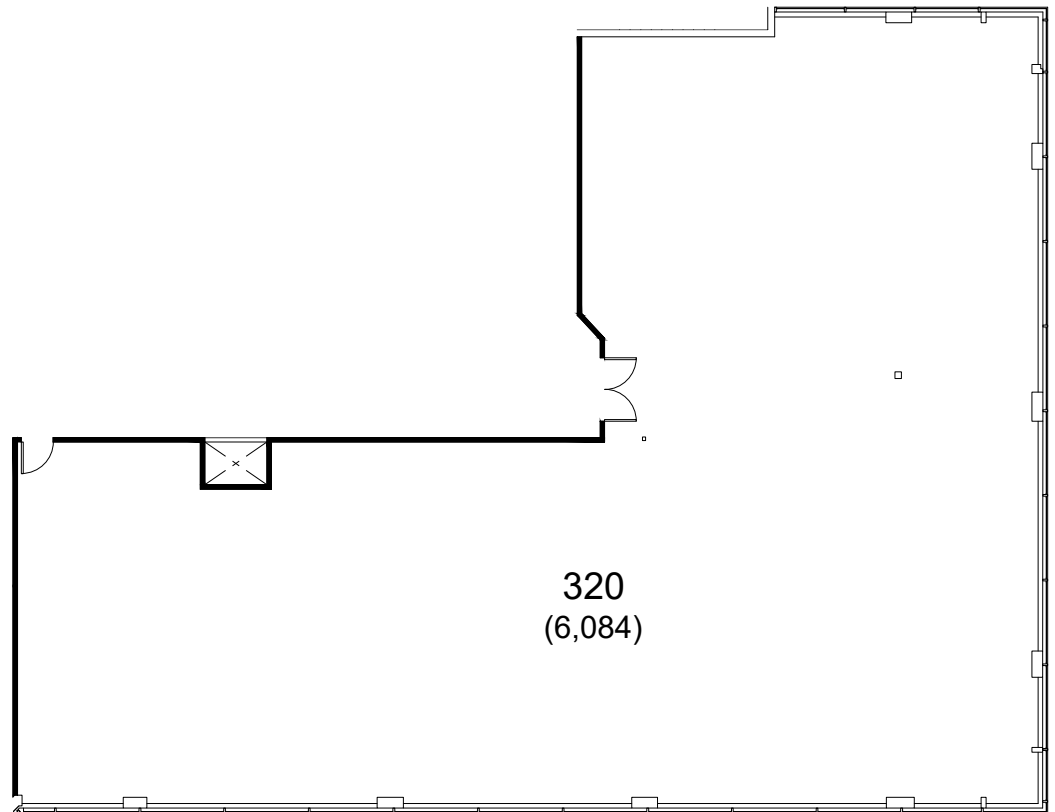
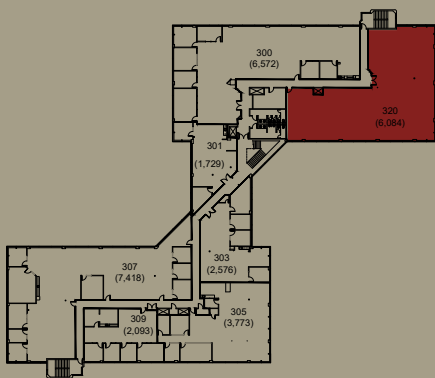


3rd Floor

Suite 320 / ±6,084 SF

- Large Open Space
- Available Now

KEY PLAN



CONTACT US

Chris Blom | Executive Vice President | +1 650 480 2057 | chris.blom@jll.com | LIC #02031205
Ben Paul | Vice Chairman | +1 650 401 2123 | ben.paul@cushwake.com | LIC #01210872

[BACK TO AVAILABILITIES](#)



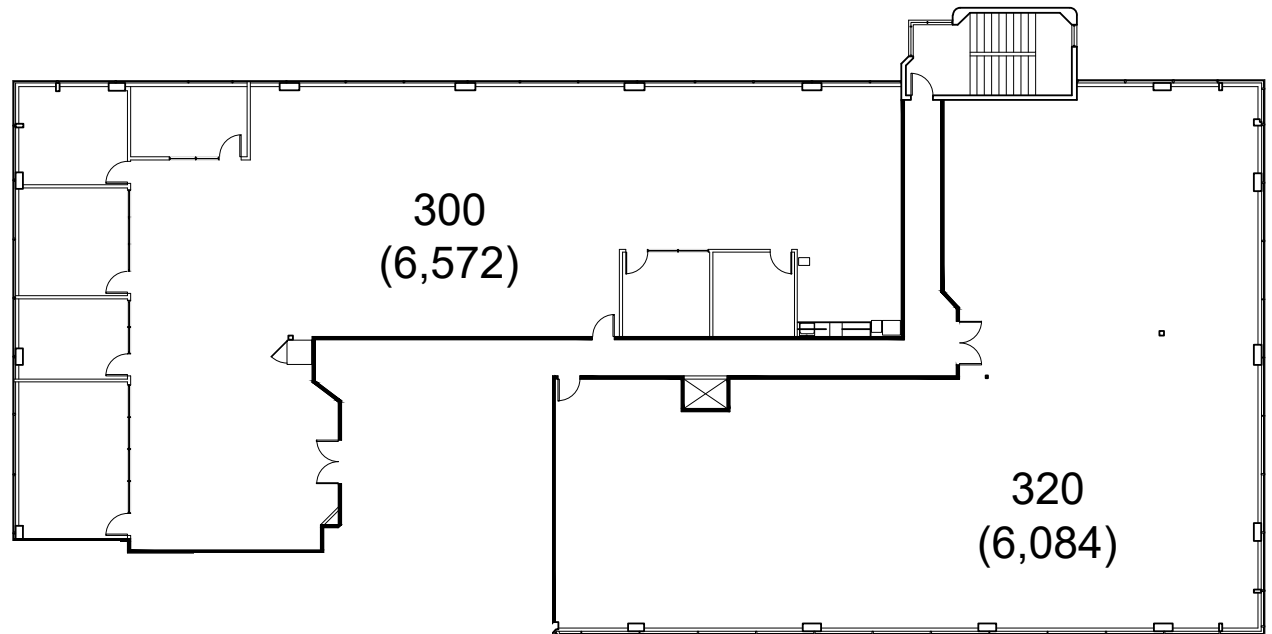
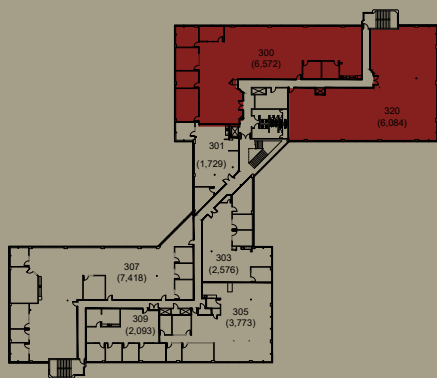


3rd Floor

Suite 300 + 320 / ±12,656 SF

- 6 Private Offices
- Conference Room
- Break Area
- Large Open Space
- Combined Entry
- Available Now

KEY PLAN



CONTACT US

Chris Blom | Executive Vice President | +1 650 480 2057 | chris.blom@jll.com | LIC #02031205
Ben Paul | Vice Chairman | +1 650 401 2123 | ben.paul@cushwake.com | LIC #01210872

[BACK TO AVAILABILITES](#)





3rd Floor

Suite 301 / ±1,729 SF

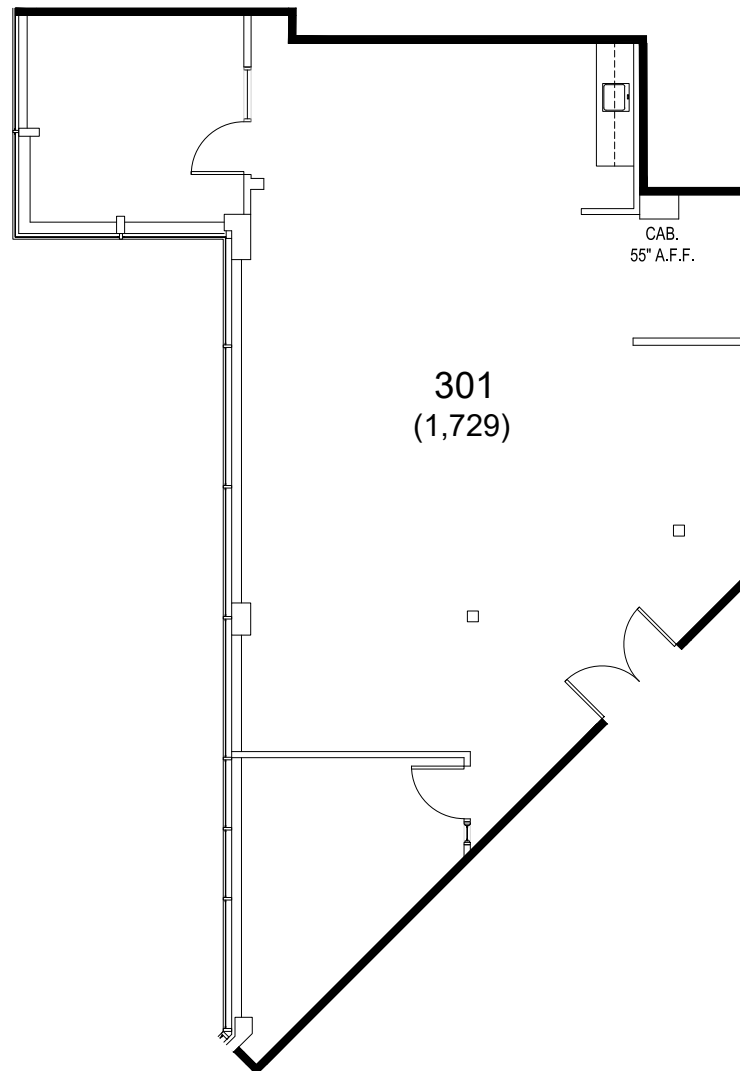
- 2 Private Offices
- Break Area
- Large Open Space
- Available Now

KEY PLAN



CONTACT US

Chris Blom | Executive Vice President | +1 650 480 2057 | chris.blom@jll.com | LIC #02031205
Ben Paul | Vice Chairman | +1 650 401 2123 | ben.paul@cushwake.com | LIC #01210872



[BACK TO AVAILABILITIES](#)



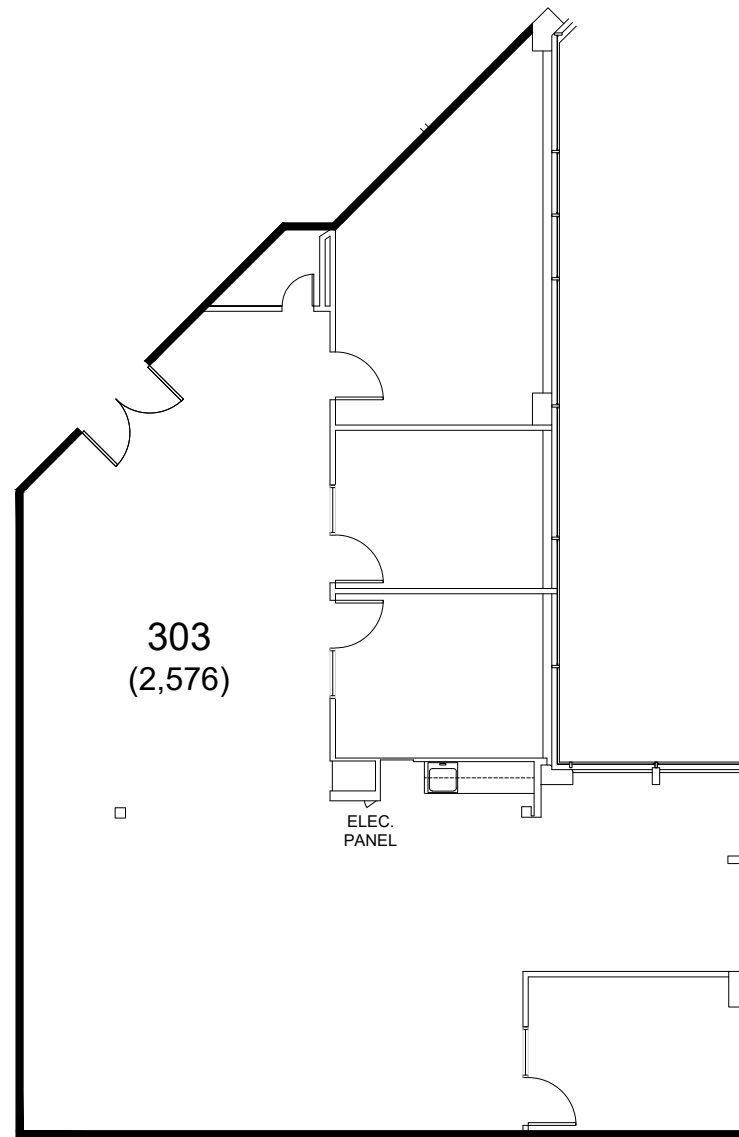
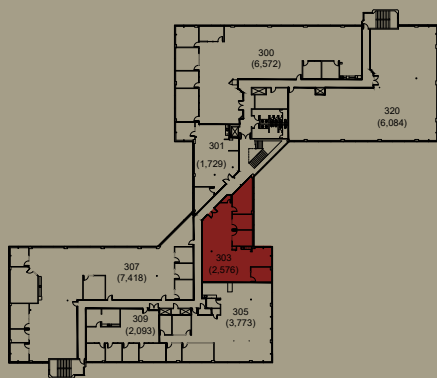


3rd Floor

Suite 303 / ±2,576 SF

- 3 Private Offices
- Conference Room
- Break Area
- Large Open Space
- Available Now

KEY PLAN



CONTACT US

Chris Blom | Executive Vice President | +1 650 480 2057 | chris.blom@jll.com | LIC #02031205
Ben Paul | Vice Chairman | +1 650 401 2123 | ben.paul@cushwake.com | LIC #01210872

[BACK TO AVAILABILITES](#)



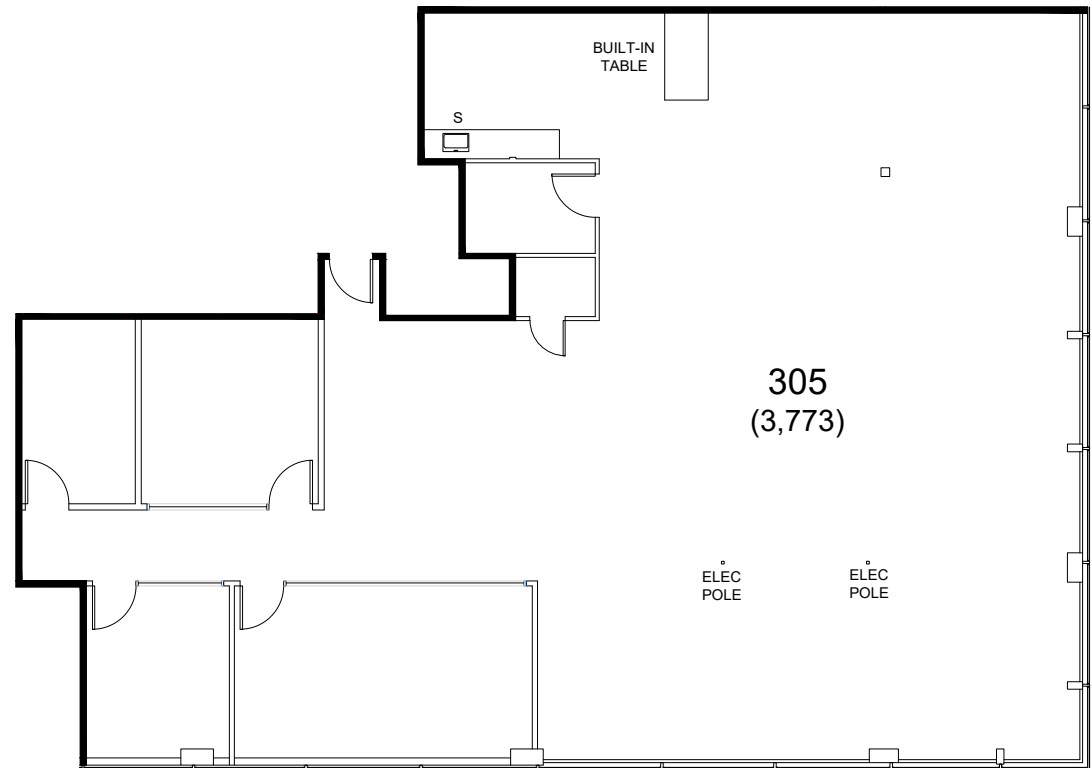
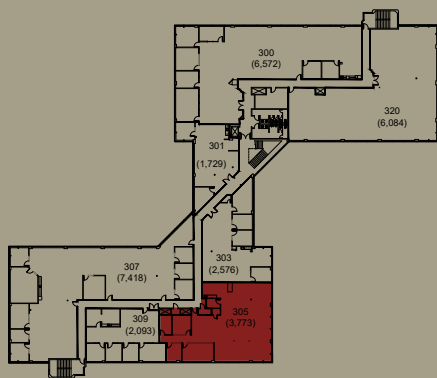


3rd Floor

Suite 305 / ±3,773 RSF

- 3 Private Offices
- Conference Room
- Break Area
- Large Open Space
- Available Now

KEY PLAN



CONTACT US

Chris Blom | Executive Vice President | +1 650 480 2057 | chris.blom@jll.com | LIC #02031205
Ben Paul | Vice Chairman | +1 650 401 2123 | ben.paul@cushwake.com | LIC #01210872

[BACK TO AVAILABILITIES](#)



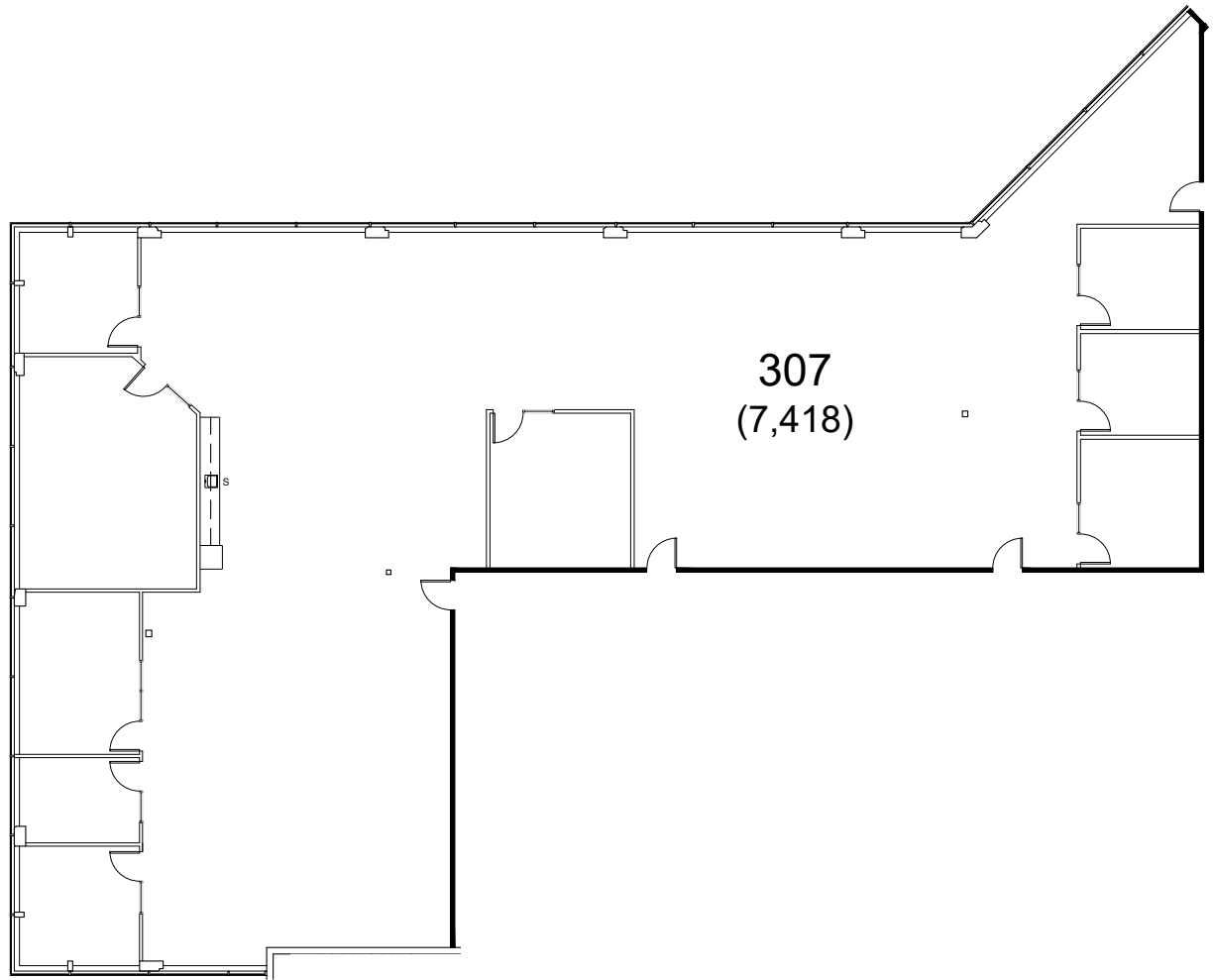
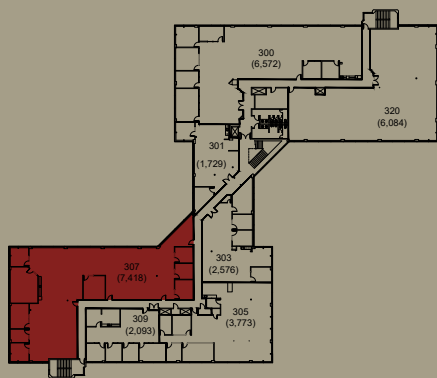


3rd Floor

Suite 307 / ±7,418 SF

- 7 Private Offices
- 2 Conference Rooms
- Break Area
- Large Open Space
- Available Now

KEY PLAN



CONTACT US

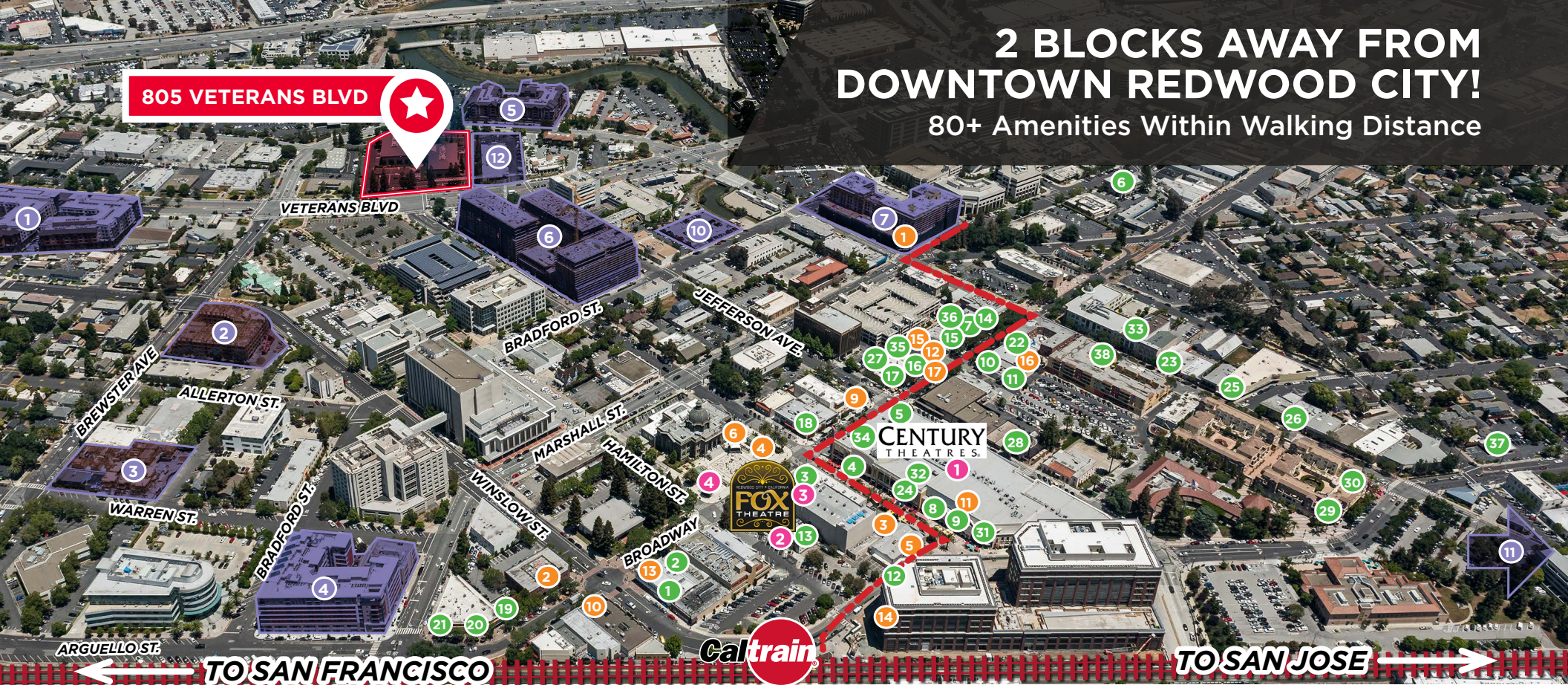
Chris Blom | Executive Vice President | +1 650 480 2057 | chris.blom@jll.com | LIC #02031205
Ben Paul | Vice Chairman | +1 650 401 2123 | ben.paul@cushwake.com | LIC #01210872

[BACK TO AVAILABILITES](#)



2 BLOCKS AWAY FROM DOWNTOWN REDWOOD CITY!

80+ Amenities Within Walking Distance



RESTAURANTS/FOOD

| | | | | | | | |
|----|-----------------------------------|----|------------------------|----|------------------------|----|----------------------|
| 1 | Broadway Masala | 11 | Rockn Wraps & Kabobs | 21 | Nikkos Mexican Pub | 31 | Timber and Salt |
| 2 | Bluefin Sushi | 12 | Old Port Lobster Shack | 22 | The Courthouse 2021 | 32 | Chipotle |
| 3 | Quinto Sol | 13 | Go Fish Poke Bar | 23 | La Victoria Taqueria | 33 | Alhambra Irish House |
| 4 | Pizza My Heart | 14 | Vesta | 24 | West Park Farm and Sea | 34 | Five Guys |
| 5 | The Old Spaghetti Factory | 15 | Vino Santo Bistro | 25 | Angelicas | 35 | May's |
| 6 | La Viga Seafood & Cocina Mexicana | 16 | Yokohama | 26 | The Patty Shack | 36 | Nick The Greek |
| 7 | LV MAR | 17 | Margaritas | 27 | Talk of Broadway | 37 | Tacos El Grullense |
| 8 | Portabello Grill | 18 | Sakura Sushi | 28 | Pasha | 38 | Venga Empanadas |
| 9 | Arya Global Cuisine | 19 | The Sandwich Spot | 29 | Donato Enoteca | | |
| 10 | Oyster Boy Seafood & Raw Bar | 20 | Orenchi Ramen | 30 | Milagros | | |

ENTERTAINMENT

| | | | |
|---|-----------------------------------|---|--|
| 1 | Century Theatres (19 Screens) | 3 | Club Fox |
| 2 | Fox Theatre (2,000 Seat Capacity) | 4 | Courthouse Square (Countless Outdoor Events) |

CLASS A RESIDENTIAL DEVELOPMENTS

| | | | |
|----|---------------------|--------------|-----------------|
| 1 | 64 Veterans Blvd. | 264 Units | Completed 6/14 |
| 2 | 429 Fuller St. | 133 Units | Completed 10/15 |
| 3 | 735 Brewster Ave. | 18 Townhomes | Completed 10/15 |
| 4 | 201 Marshall St. | 116 Units | Completed 6/14 |
| 5 | 333 Main St. | 132 Units | Completed 3/14 |
| 6 | 525 Middlefield Rd. | 471 Units | Completed 1/16 |
| 7 | 601 Main St. | 196 Units | Completed 3/16 |
| 8 | 113 Monroe St. | 305 Units | Completed 8/15 |
| 9 | 1548 Maple St. | 131 Units | Deliver 2021 |
| 10 | 707 Bradford St. | 117 Units | Deliver 2022 |
| 11 | 1409 El Camino | 350 Units | Deliver 2020 |
| 12 | 849 Veterans Blvd. | 90 Units | Completed 2019 |

COFFEE, DRINKS & DESSERTS

| | | | |
|---|-------------------|----|----------------------|
| 1 | Coupa Cafe | 10 | Mademoiselle Colette |
| 2 | Red Giant Coffee | 11 | Cyclismo Cafe |
| 3 | Cafe La Tartine | 12 | Revere Coffee & Tea |
| 4 | Chatime | 13 | Teaspoon |
| 5 | Joe & The Juice | 14 | CRU |
| 6 | Froyola Yogurt | 15 | The Blacksmith |
| 7 | Starbucks Reserve | 16 | The Nighthawk |
| 8 | Peets Coffee | 17 | Bubble & Wrap |
| 9 | Philz Coffee | | |

CONTACT US

Chris Blom | Executive Vice President | +1 650 480 2057 | chris.blom@jll.com | LIC #02031205
Ben Paul | Vice Chairman | +1 650 401 2123 | ben.paul@cushwake.com | LIC #01210872

