

For Lease

Office space in McGeoch Building

322 E. Michigan St., Milwaukee, WI 53202

Jones Lang LaSalle Brokerage, Inc. a licensed real estate broker.



For lease

Move-in ready spec suites available with furniture included. Combination of private and open office on the top floor of the historic McGeoch Building, centrally located at the intersection of the Central Business District and the Historic Third Ward. Vacancies in the building feature a corner suite location, cream city brick, and lots of natural light.



Office rendering.



Lease Rate \$26.00 / SF, Modified Gross

Building size 40,000 SF

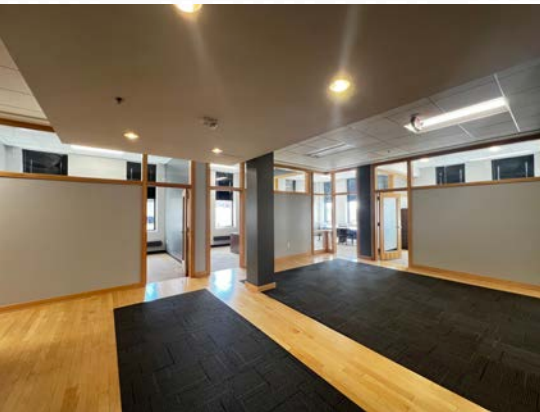
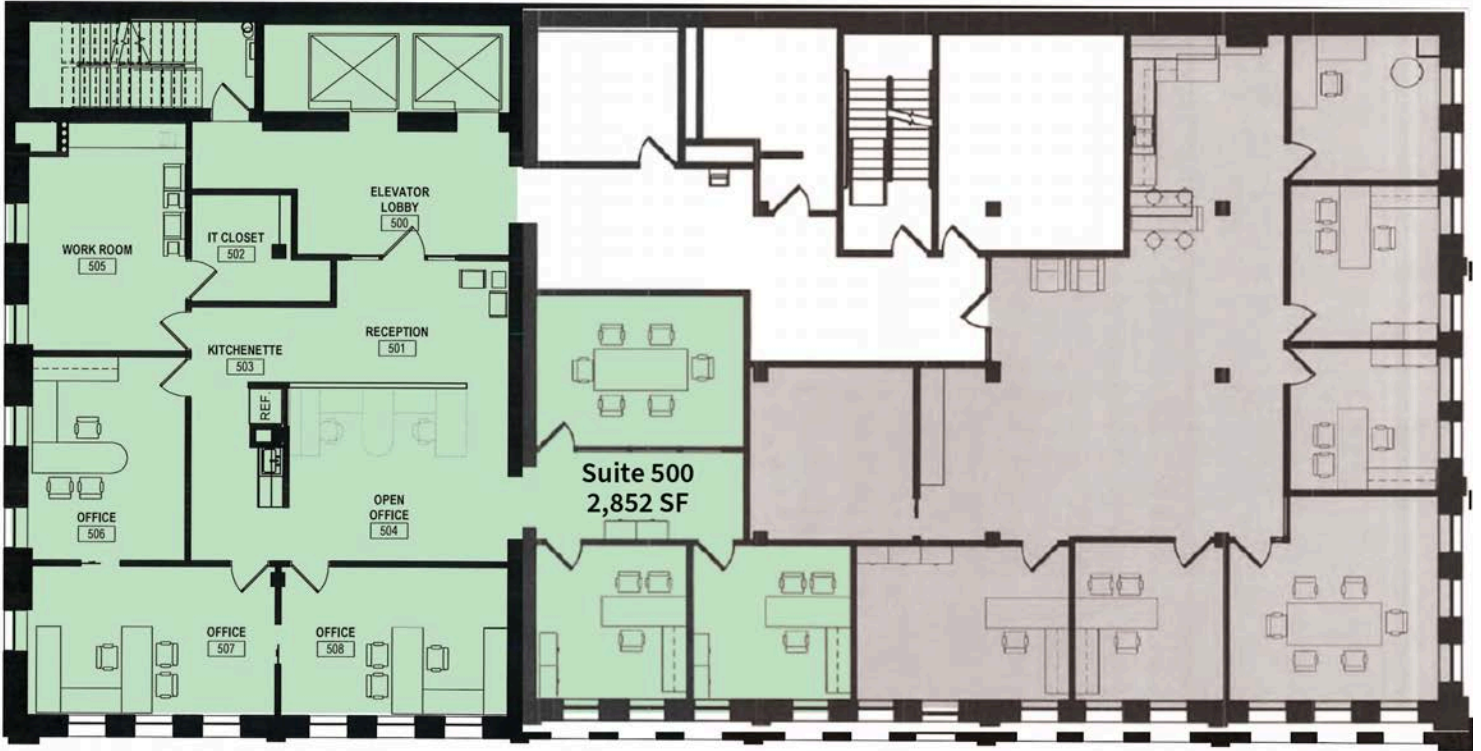
Built 1893

Stories 6

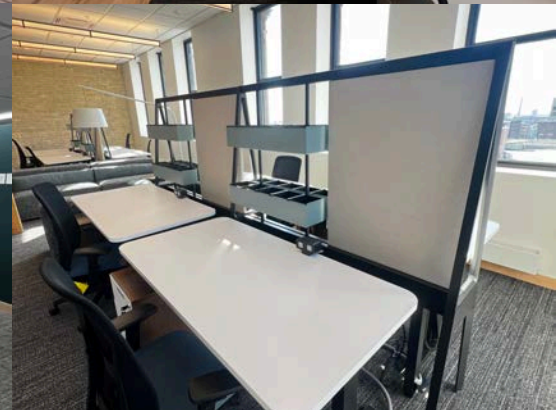
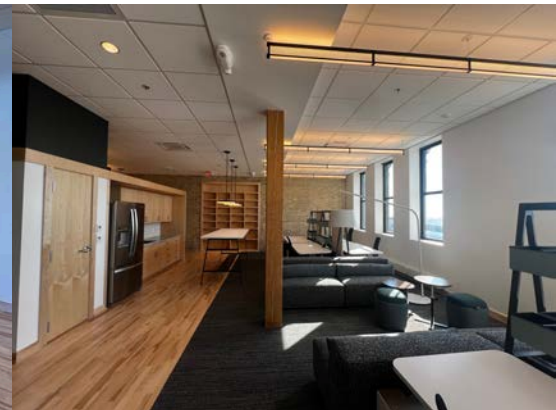
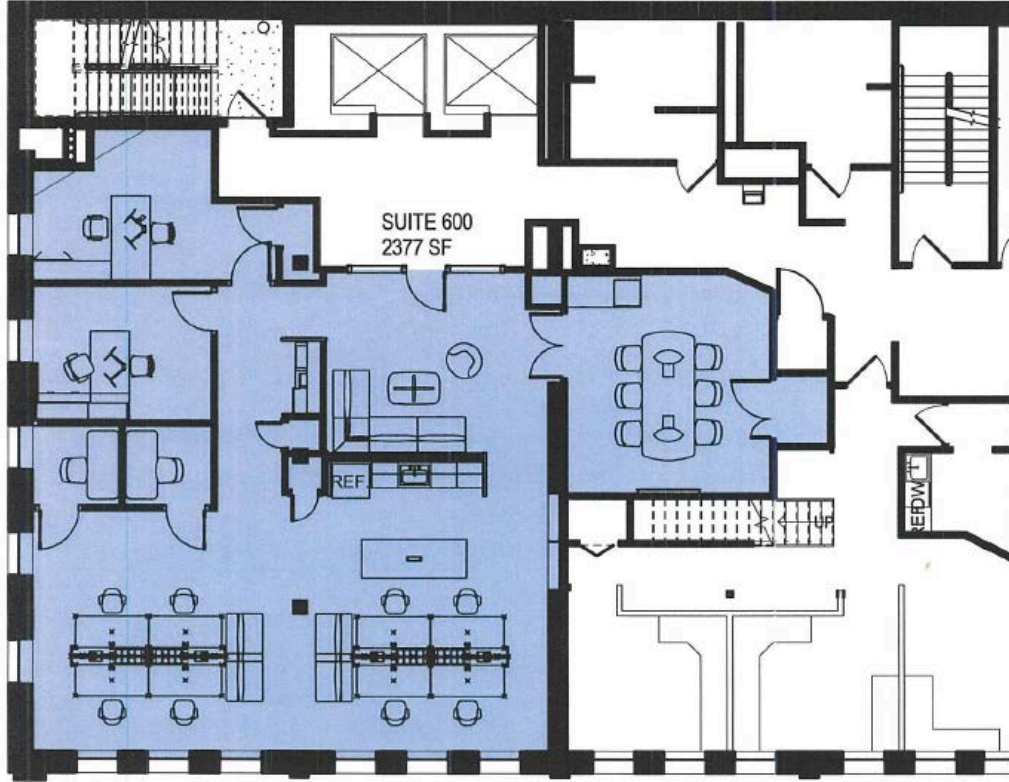
Walkability score 97 (Walker's Paradise)

- State of the art HVAC / temperature control system
 - Recently upgraded restrooms
 - Building surface parking at \$90 per month and several covered parking options nearby
-

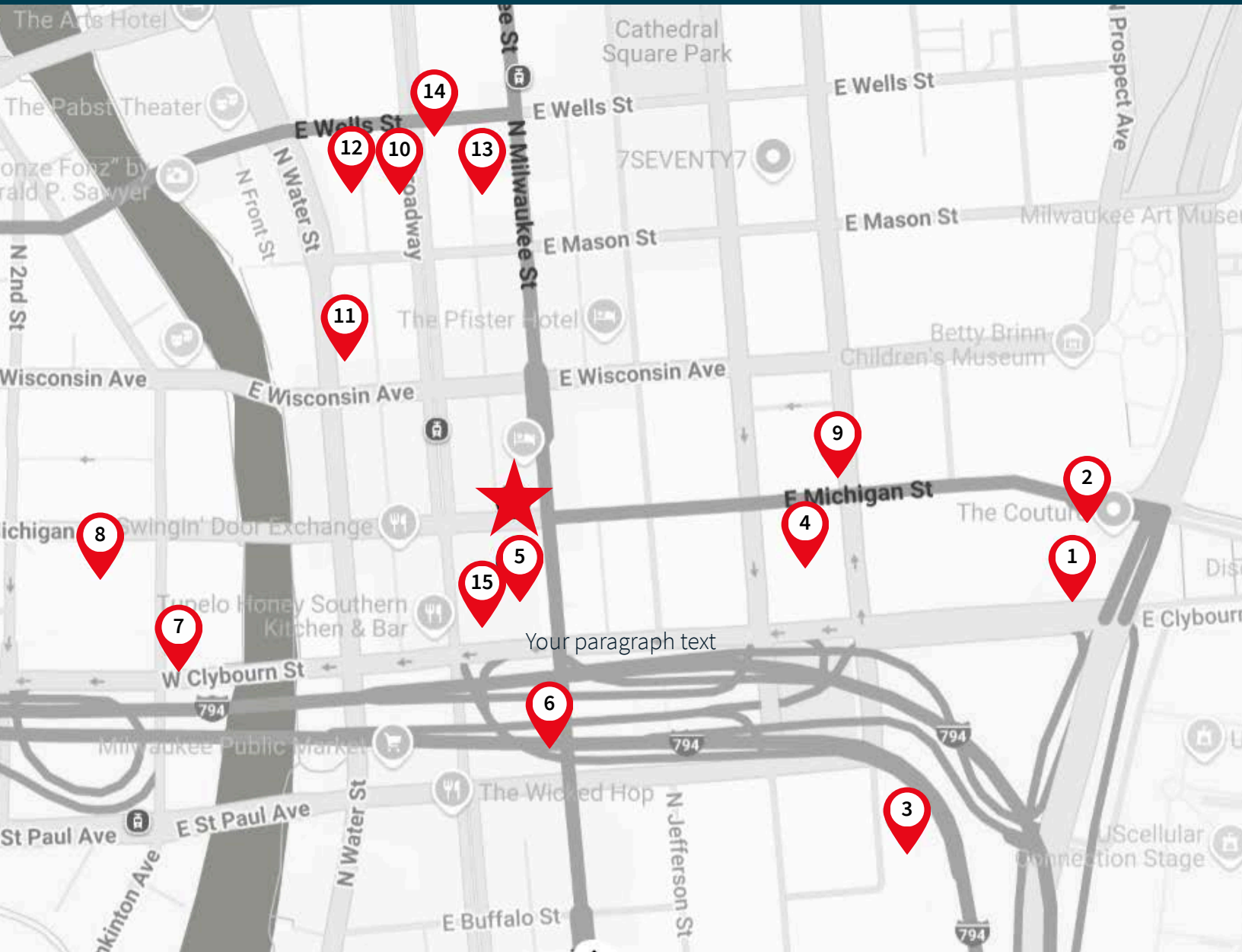
Suite 500 | 2,852 SF



Suite 600 | 2,377 SF



Nearby Parking



Address	Cost/Month	Address	Cost/Month
1. 909 E. Michigan St.	\$161.85	9. 637 Van Buren St.	\$150.00
2. 910 E Michigan St.	\$161.85	10. 771 N Broadway	\$220.00
3. 328 N Van Buren St.	\$116.53	11. 720 N Water St.	\$155.00
4. 616 E. Clybourn St.	\$110.00	12. 209 E Wells St.	\$155.00
5. 534 N. Broadway	\$245.00	13. 777 N Milwaukee St.	\$90.00
6. 431 N. Milwaukee St.	\$148.90	14. 302 E. Wells St.	\$140.00
7. 518 N Plankinton Ave.	\$142.43	15. 500 N. Broadway	\$175.00
8. 555 N. Plankinton Ave.	\$142.43		



MILWAUKEE BUCKS'
DEER DISTRICT

Office space for lease
McGeoch Building
322 E. Michigan St., Milwaukee, WI

HISTORIC THIRD WARD

JLL

Julia Howe

Vice President

julia.howe@jll.com

+1 414 944 2122

Tim Nelson, CCIM

Vice President

+1 262 239 0970

timothy.nelson@jll.com