

989 S. Cucamonga

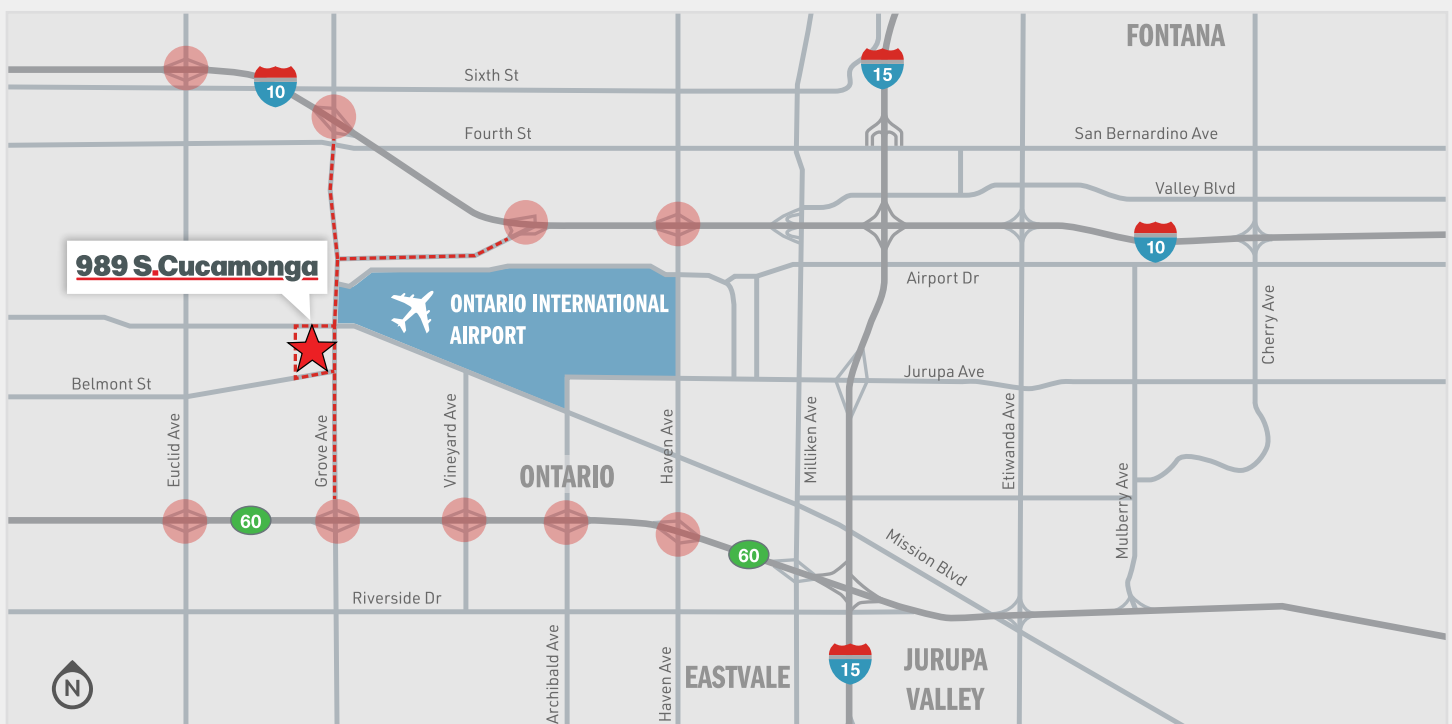
Another Project By:



989 S. Cucamonga Ave | Ontario, CA

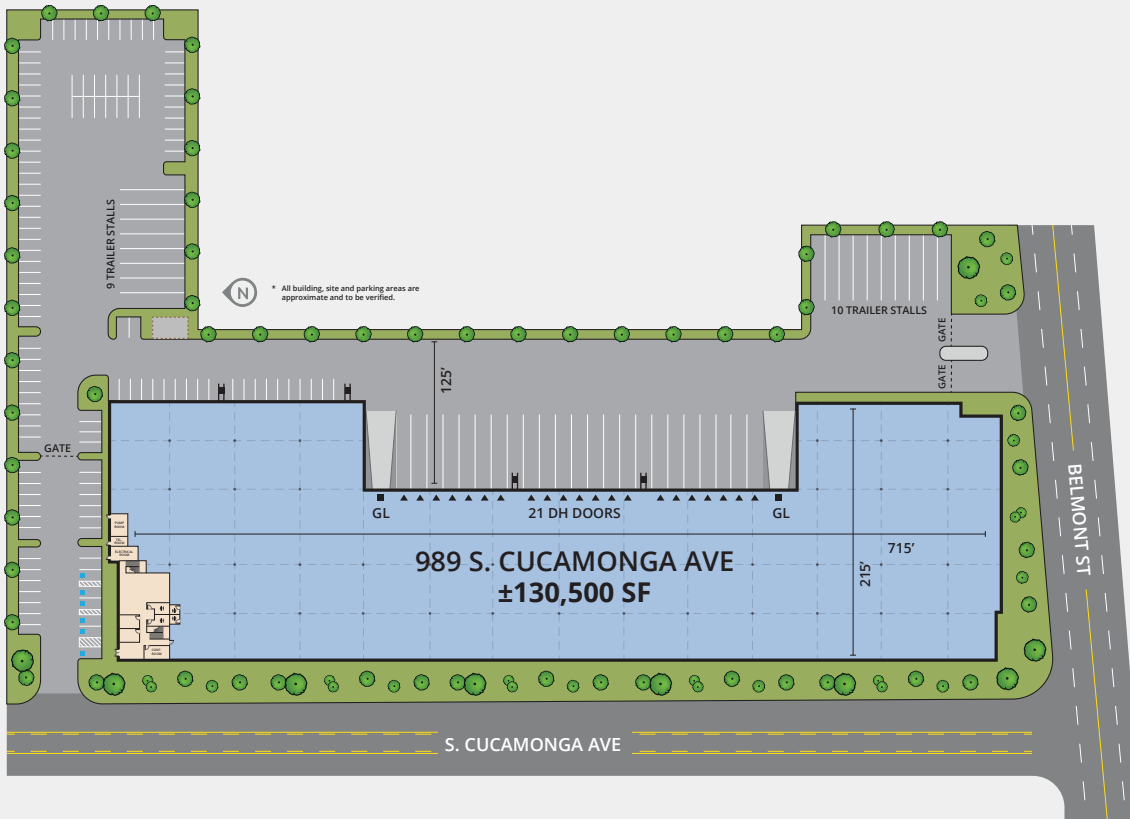
±130,500 SF Available for Lease

- | | | | |
|----------------|--------------------------------|------------------|--|
| Land Area: | 6.73 Acres | Trailer Parking: | 19 stalls
<i>Potential to re-stripe for 49 stalls</i> |
| Office Size: | 6,800 SF 2-Story Office | Fire Sprinklers: | ESFR (K-17 @ 52 psi) |
| Loading Doors: | 21 Dock High
2 Ground Level | Electrical: | 2,000 amps, 480 Volt |
| Clear Height: | 30' | Zoning: | IG (General Industrial) |
| Auto Spaces: | 133 | Year Built: | 2015 |
| Truck Court: | 125' | Access: | Direct access to SR-60, I-10 & I-15
freeways. 2 points of ingress / egress. |

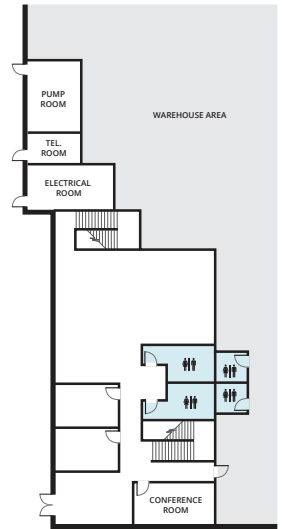


989 S. Cucamonga

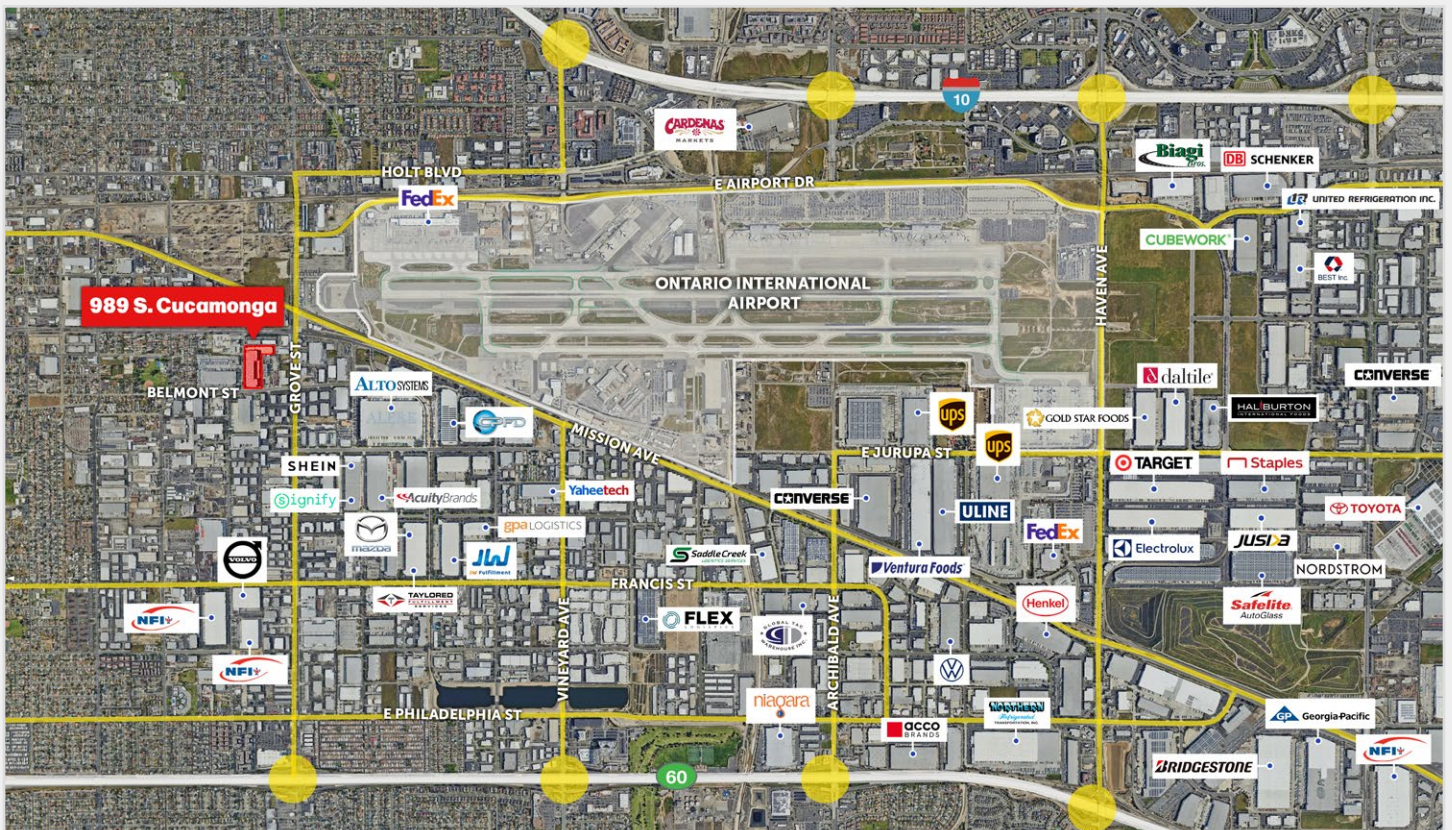
Another Project By:



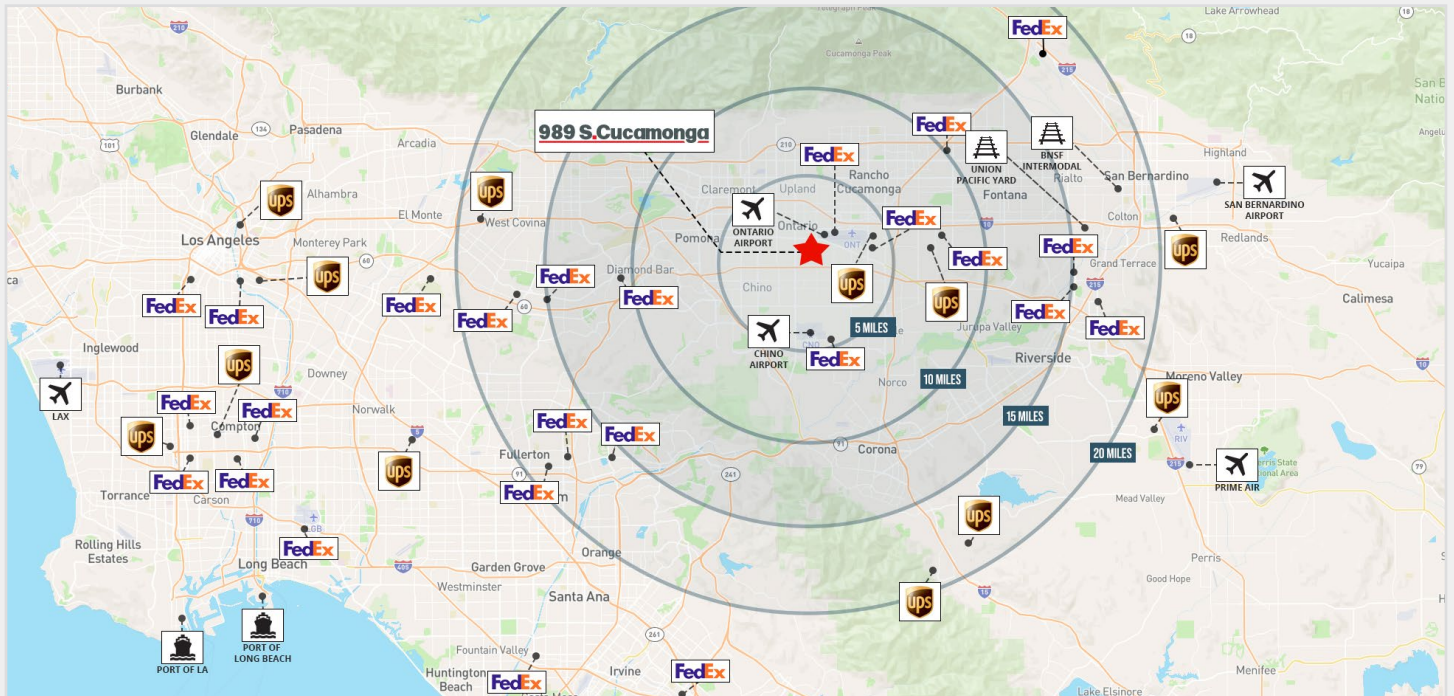
±3,000 SF Office



Blue Chip Corporate Neighbors



Strategic Inland Empire Location



Location Highlights

- 

1.5 miles
to FedEx Ontario Hub
- 

2 miles
to Ontario International Airport
- 

3 miles
to UPS Ontario Ground Hub
- 

16 miles
to UP Intermodal Yard - Colton
- 

20 miles
to BNSF Intermodal Yard - San Bernardino
- 

55 miles
to Ports of Los Angeles and Long Beach
- 

56 miles
to Los Angeles International Airport

**All distances reflected above are approximate*



Mac Hewett

Lic.# 01920070
E: mac.hewett@jll.com
P: 1-909-467-6902

Hunter McDonald

Lic.# 01879029
E: hunter.mcdonald@jll.com
P: 1-909-467-6873

Jeff Bellitti

Lic.# 01232571
E: jeff.bellitti@jll.com
P: 1-909-467-6881

Dya Navarrete

Lic.# 02078833
E: dya.navarrete@jll.com
P: 1-909-467-6875