


REFUGEE ROAD SW

ETNA PARKWAY



For sale

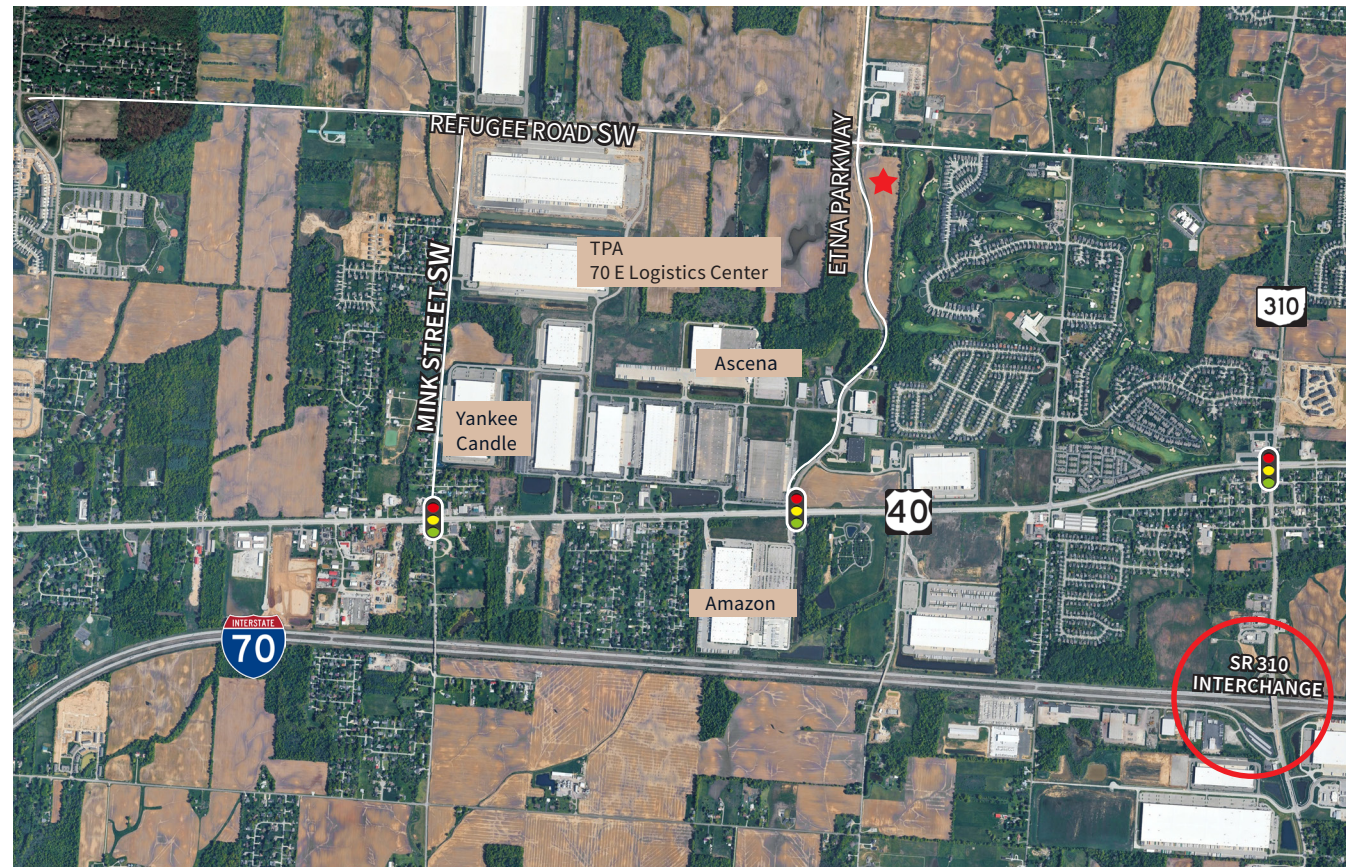
Etna Parkway, Etna, Ohio
26.894 Acres Available

 **JLL** SEE A BRIGHTER WAY

Property overview

Advantages and amenities

- 26.894 Acres / Divisible - Zoned M-1
- Great access to I-70 via five lane SR 310 new interchange
- Access to labor - 1.8 million people with in 45 minute drive
- Close proximity to John Glenn International Airport
- Pro business Etna location, home to Ascena, Amazon, Yankee Candle and Kohl's
- Served by Southwest Licking Water & Sewer
- Shovel ready with pre-negotiated 15 year- 100% tax abatement ETNA



The Perfect Location in Central Ohio

Etna Township is known for its pro-business environment and proximity to a robust labor pool. Located just minutes from downtown Columbus, Etna offers immediate access to I70 and the following:

- **2 miles** from I-70
- **6 miles** from I-270
- **8 miles** from John Glenn International Airport

Etna Township is within a 600 mile radius of 50% of the U.S. population, 78% of the U.S. gross domestic product, more than 80% of Canada's business activity, and 62% of all U.S. manufacturing income making it an ideal location for logistics and manufacturing.

JLL

Brian Marsh

brian.marsh@jll.com

+1 (614) 460 4421

Although information has been obtained from sources deemed reliable, neither Owner nor JLL makes any guarantees, warranties or representations, express or implied, as to the completeness or accuracy as to the information contained herein. Any projections, opinions, assumptions or estimates used are for example only. There may be differences between projected and actual results, and those differences may be material. The Property may be withdrawn without notice. Neither Owner nor JLL accepts any liability for any loss or damage suffered by any party resulting from reliance on this information. If the recipient of this information has signed a confidentiality agreement regarding this matter, this information is subject to the terms of that agreement. © 2025 Jones Lang LaSalle IP, Inc. All rights reserved.