



Full fees and \$1.00 PSF per year bonus commission  
\*For first 5 years of term

For Lease

# Papaschase Business Park

9703-9797 45 Avenue & 4304-4484 97 Street | Edmonton, AB

Office spaces starting at  $\pm 811$  SF

- Multiple buildout configurations ranging in size; suitable for a range of tenant groups
- Air-conditioned offices with lots of natural light
- Ongoing interior upgrades including fresh paint, new carpet, renovated washrooms and LED lighting
- Easy access to many arterial roads such as 99 Street, Calgary Trail, and Whitemud Drive

For more information contact:

**Hillary Williams**  
Associate Vice President  
587 881 0170  
Hillary.Williams@jll.com

**Bronwyn Scrivens**  
Vice President, SIOR  
780 807 4564  
Bronwyn.Scrivens@jll.com

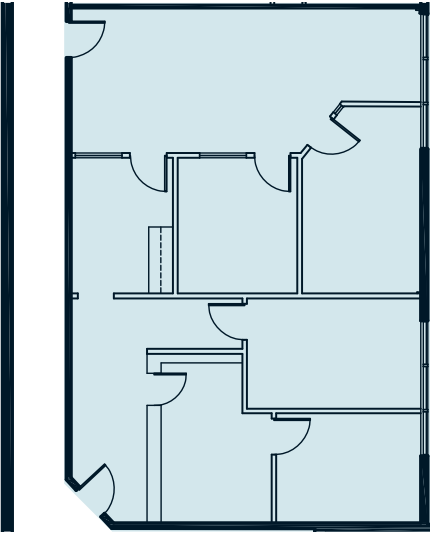


# Property Details

<b>Property Type</b>	Industrial & Office
<b>Year(s) Built</b>	1979/1981
<b>Legal Description</b>	Plan: 7721481; Block: 7; Lot: 18
<b>Building Size</b>	(6) Buildings Total: 236,630 SF Industrial: 194,856 SF Office: 41,774 SF
<b>Available Area</b>	811 - 5,346 SF
<b>Zoning</b>	BE - Business Employment
<b>Construction</b>	Precast concrete, steel frame
<b>Lighting</b>	LED
<b>Power</b>	TBC by Tenants

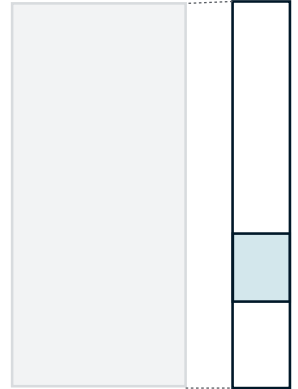
<b>Heating</b>	Rooftop units with A/C
<b>Internet</b>	Fibre optics
<b>Parking</b>	Ample free parking
<b>Signage</b>	Fascia
<b>Lease Rate (PSF)</b>	\$8.00
<b>Op. Costs (PSF)</b>	Building 1,2, & 6: \$9.07 Utilities are included, In-suite janitorial separate
	Building 4: \$7.41 includes water and gas, In-suite janitorial and power are separate

## Vacancy | Building 1

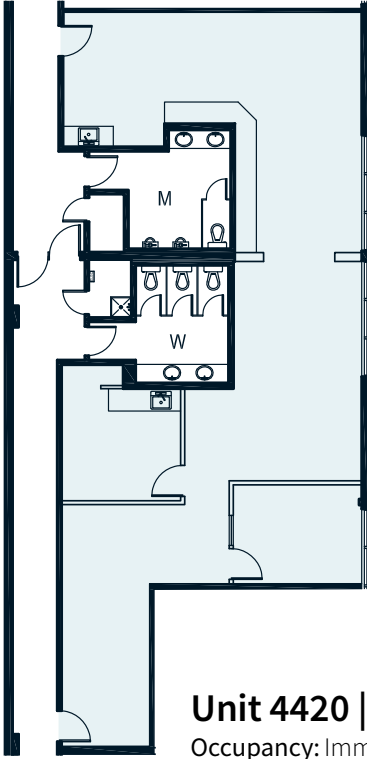


**Unit 4466** | ±1,541 SF  
Occupancy: Immediately

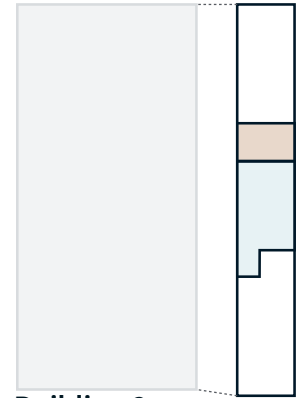
**Building 1**



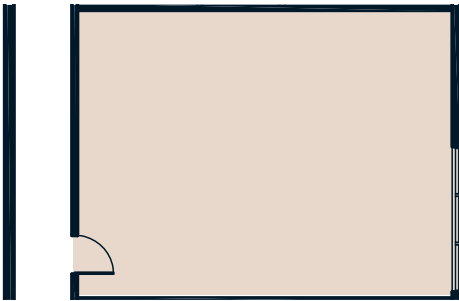
## Vacancy | Building 2



**Unit 4420** | ±1,704 SF  
Occupancy: Immediately

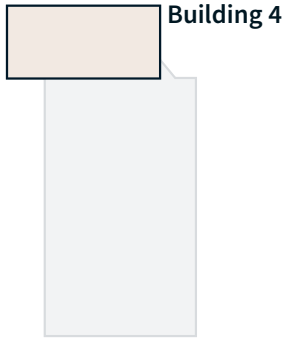


**Building 2**



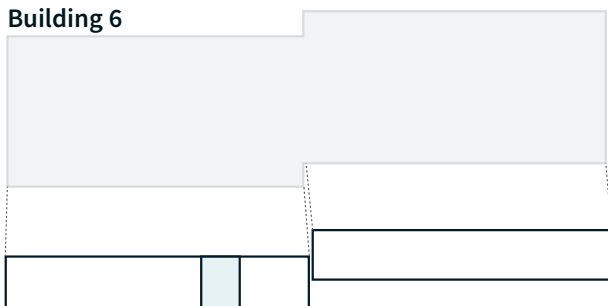
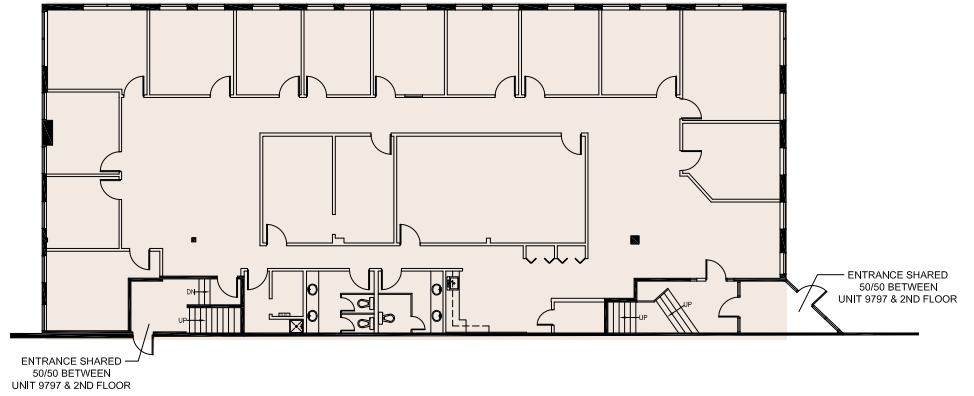
**Unit 4428** | ±,811 SF  
Occupancy: Immediately



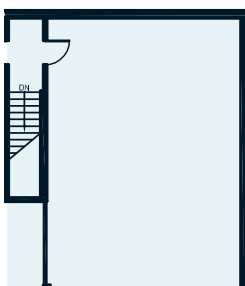


## Vacancy | Building 4

**Unit 100-9797**  
±5,346 SF (Main Floor)  
Occupancy:  
Immediately

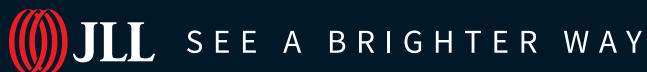
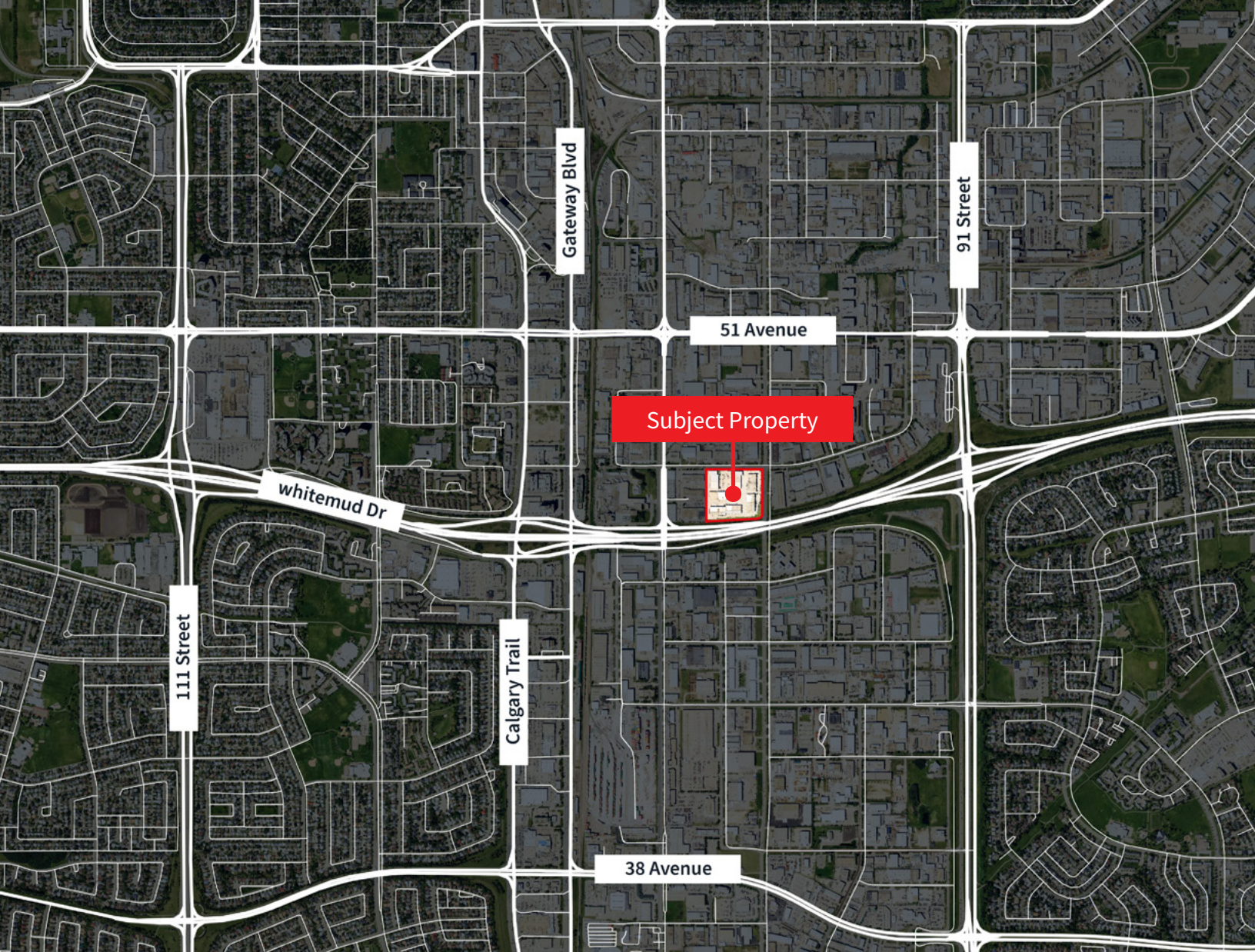


## Vacancy | Building 6



**Unit 4326**  
±863 SF  
Occupancy:  
Immediately





**Darryl McGavigan**  
Executive Vice President  
780 328 0064  
Darryl.McGavigan@jll.com

**Kent Simpson**  
Vice President  
780 203 0425  
Kent.Simpson@jll.com

**Adam Butler**  
Executive Vice President  
780 328 0065  
Adam.Butler@jll.com

**Mackenzie York**  
Associate Vice President  
780 920 8463  
Mackenzie.York@jll.com

**Bronwyn Scrivens**  
Vice President, SIOR  
780 807 4564  
Bronwyn.Scrivens@jll.com

**Hillary Williams**  
Associate Vice President  
587 881 0170  
Hillary.Williams@jll.com

**JLL Edmonton Industrial** | National Bank Centre - 3560, 10180 101 Street NW, Edmonton, AB, T5J 3S4

DISCLAIMER: ©2026 Jones Lang LaSalle IP, Inc. All rights reserved. All information contained herein is from sources deemed reliable; however, no representation or warranty is made to the accuracy thereof. The Property may be withdrawn without notice. Neither Owner nor JLL accepts any liability for any loss or damage suffered by any party resulting from reliance on this information. Jones Lang LaSalle Real Estate Services, Inc.