



MAPLE PARK MEDICAL OFFICE CENTER

FOR LEASE
6010-6024 W. MAPLE ROAD
WEST BLOOMFIELD, MICHIGAN
56,816 SF | 7 Buildings

Property Highlights

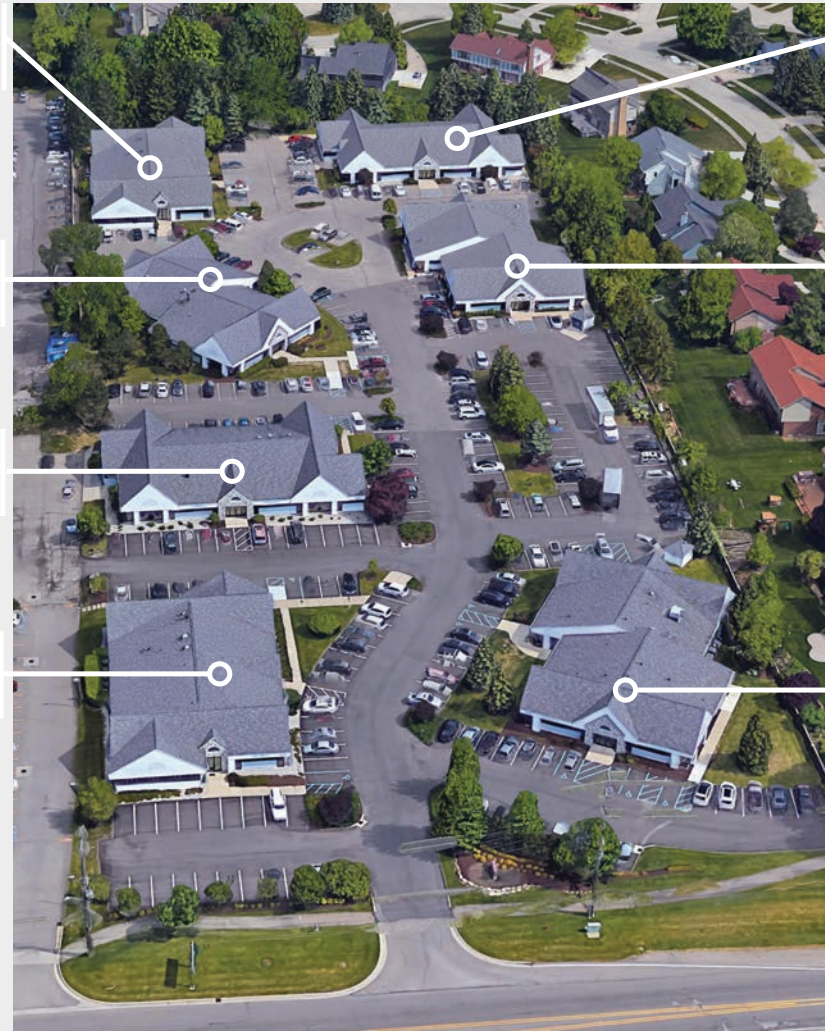
- 56,816 SF Medical Park
- 1,000 - 3,468 SF Available
- **Prominent Location**
 - Surrounded by several medical complexes including Henry Ford Hospital and Beaumont Medical Center
- **Impeccably Maintained**
 - HVAC replacement and significant interior renovations completed in last five (5) years
- **Diverse Medical Tenants**
 - Office park offers a diverse tenant base of medical practitioners
- Ample parking available
- The seven (7) building complex ideally situated in a flourishing submarket in Metro Detroit.
- Maple Park is in close proximity to two world class health care institutions.

BUILDING 1
6018 W. MAPLE
AVAILABLE:
SUITE 888 | 3,468 SF

BUILDING 2
6020 W. MAPLE
AVAILABLE:
SUITE 501 | 1,000 SF

BUILDING 3
6022 W. MAPLE

BUILDING 4
6024 W. MAPLE
AVAILABLE:
SUITE 108 | 1,216 SF



BUILDING 5
6016 W. MAPLE
AVAILABLE:
SUITE 700 | 1,287 SF
SUITE 701 | 1,426 SF
SUITE 705 | 2,918 SF

BUILDING 6
6014 W. MAPLE

BUILDING 7
6010 W. MAPLE

DEMOGRAPHICS

1 Mile	
Estimated Population	12,960
Estimated Total Households	5,214

5 Miles	
Estimated Population	159,551
Estimated Total Households	63,650

3 Miles	
Estimated Population	66,318
Estimated Total Households	25,717

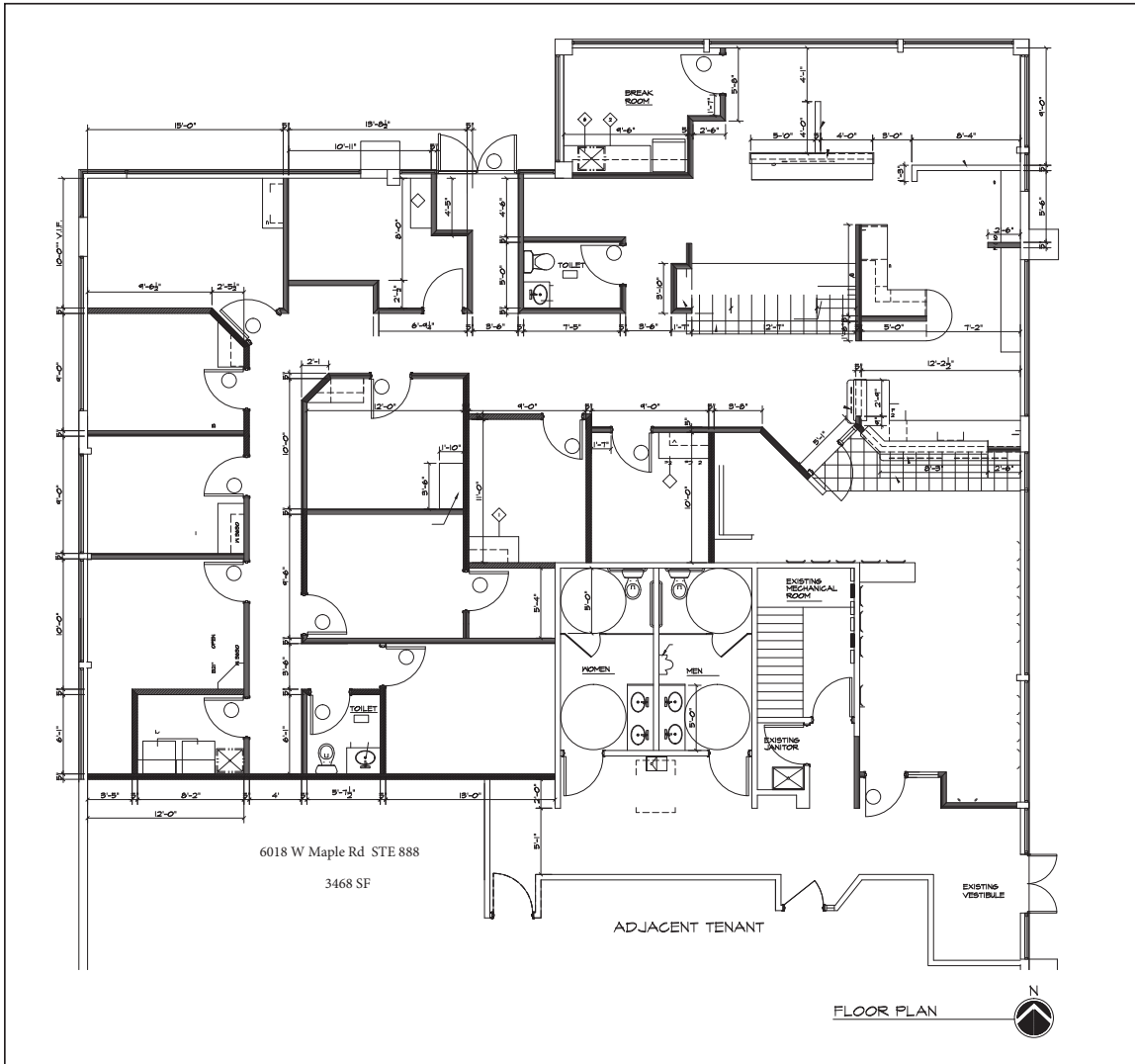
TRAFFIC COUNTS

West Maple Road & Farmington Road	22,961
-----------------------------------	--------

MAPLE PARK MEDICAL OFFICE CENTER

BUILDING 1 | 6018 W. Maple

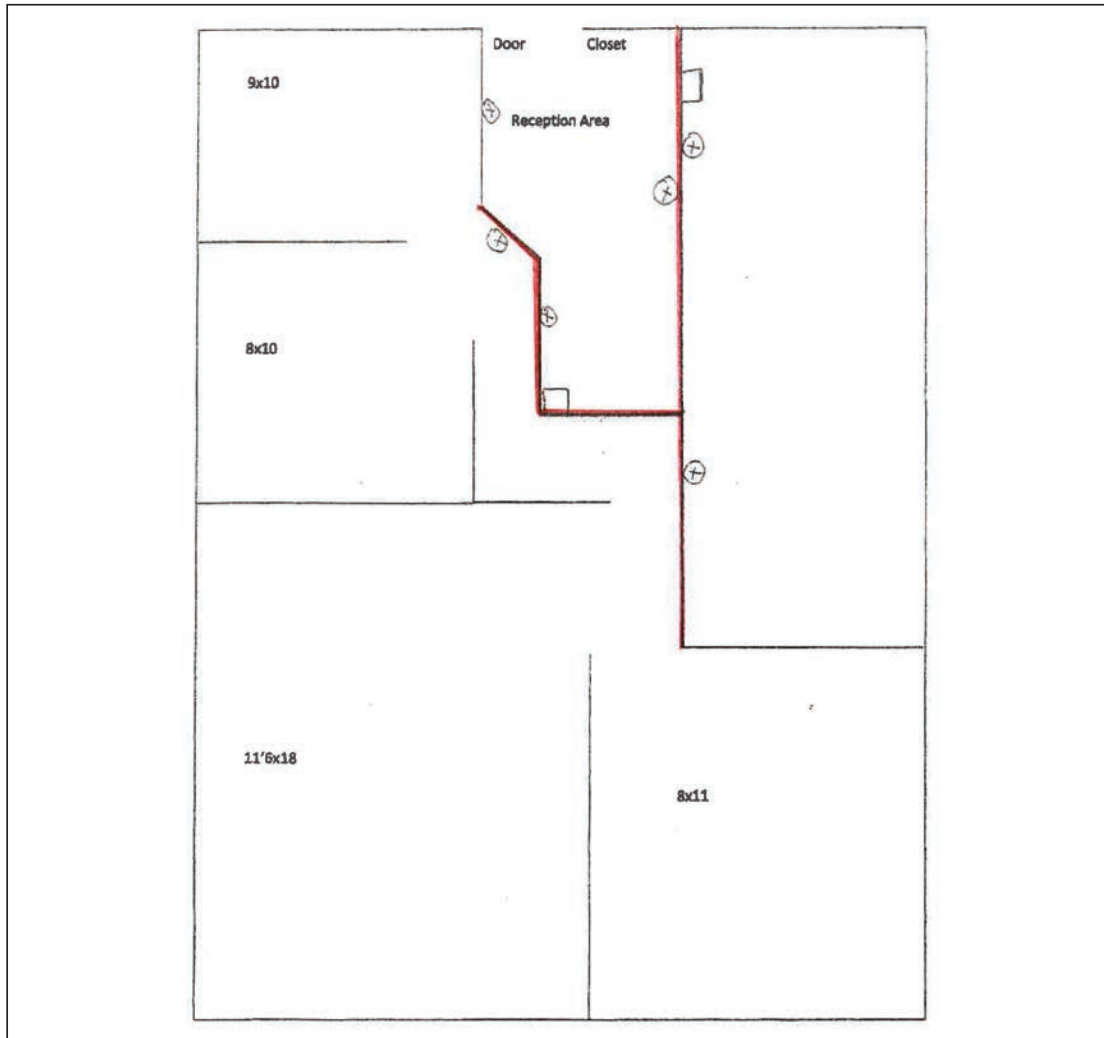
AVAILABLE:
SUITE 888 | 3,468 SF



MAPLE PARK MEDICAL OFFICE CENTER

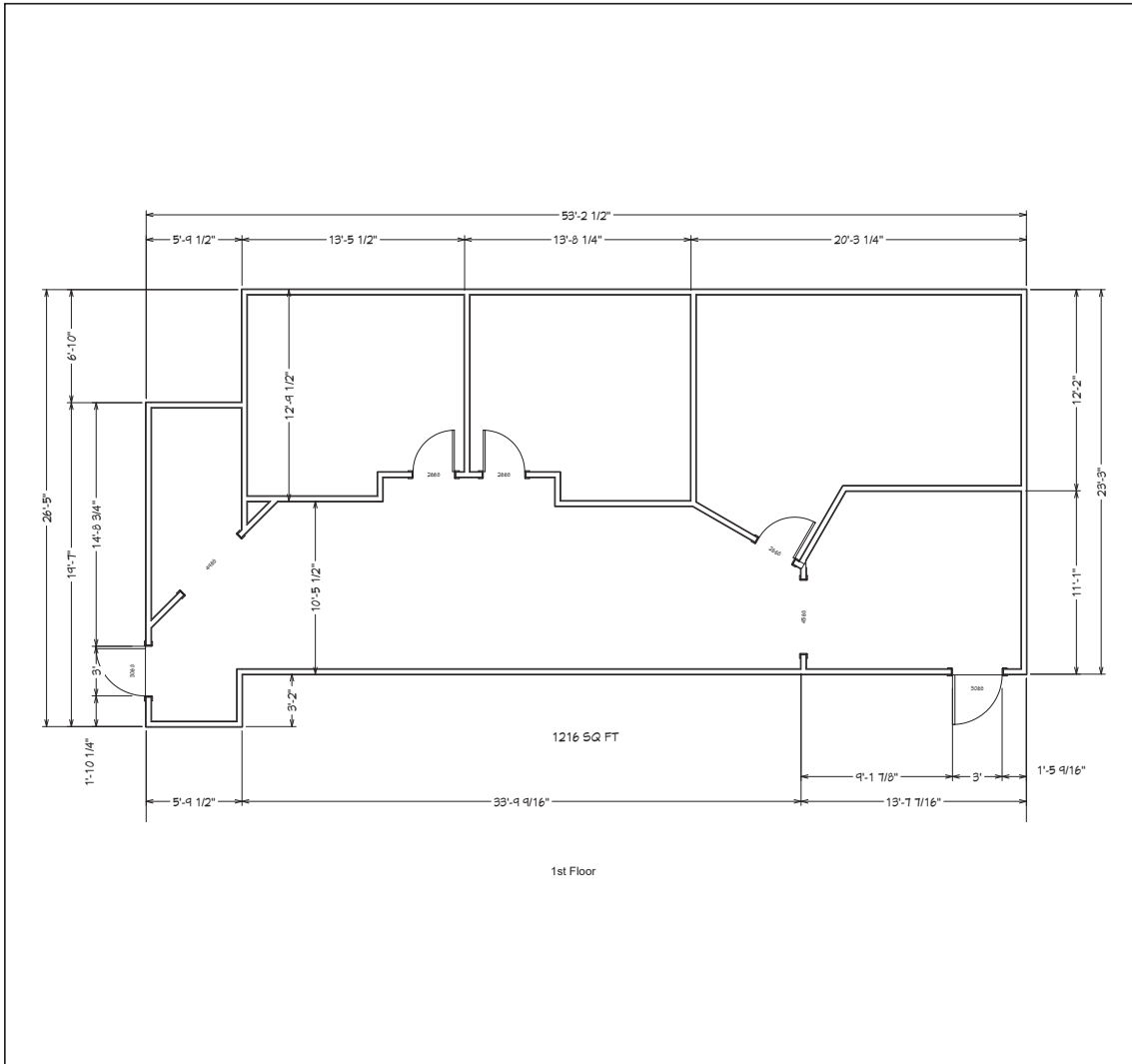
BUILDING 2 | 6020 W. Maple

AVAILABLE:
SUITE 501 | 1,000 SF



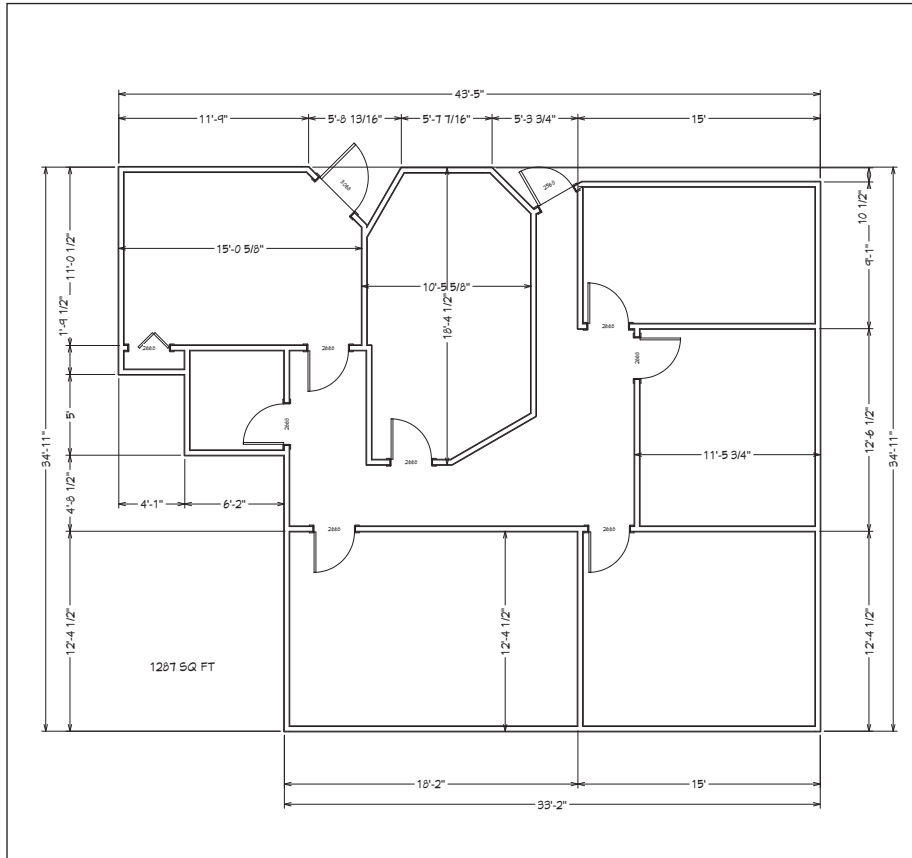
BUILDING 4 | 6024 W. Maple

AVAILABLE:
SUITE 108 | 1,216 SF

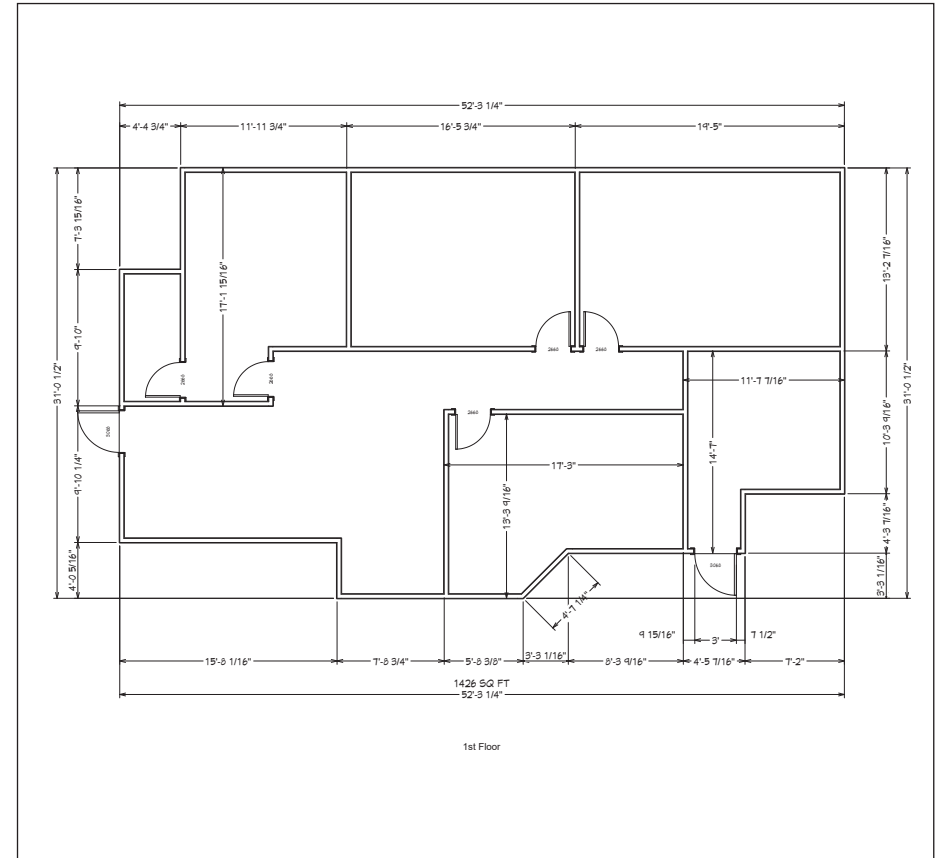


BUILDING 5 | 6016 W. Maple

AVAILABLE:
SUITE 700 | 1,287 SF

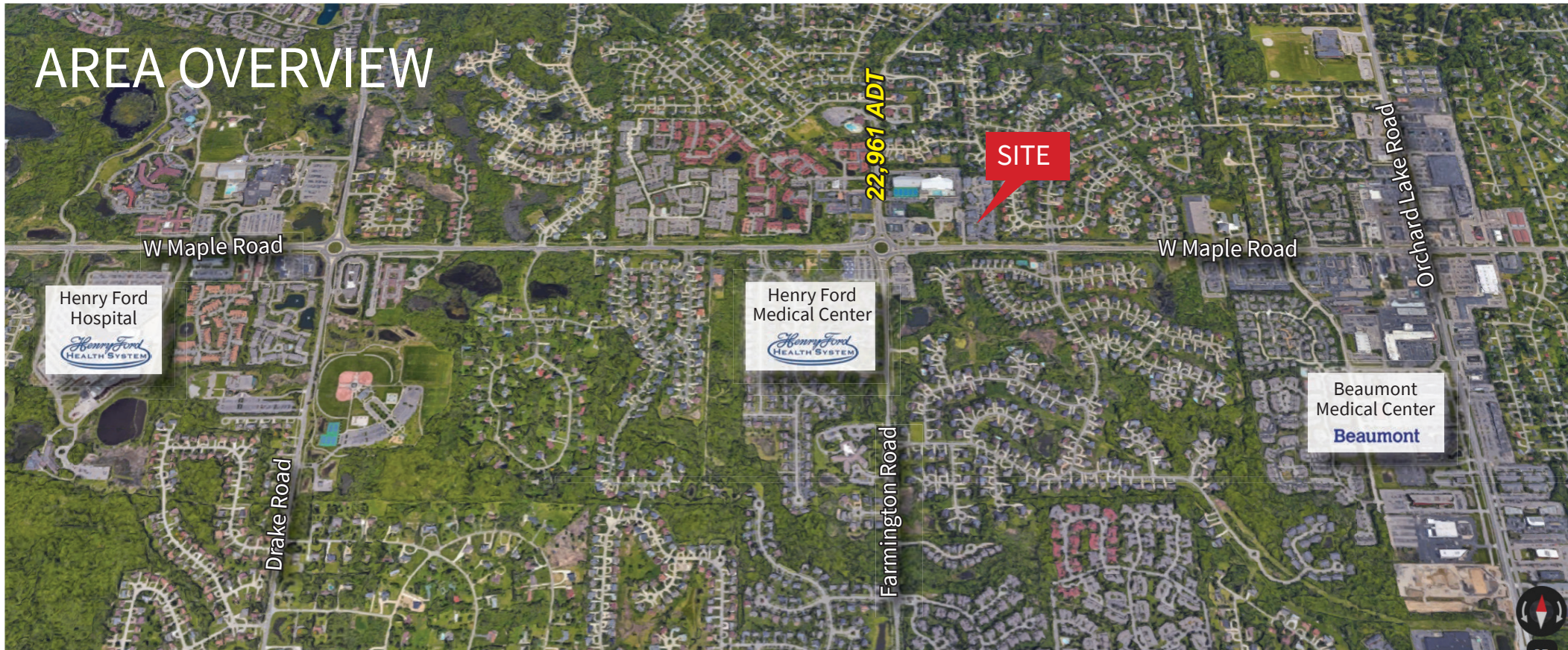


AVAILABLE:
SUITE 701 | 1,426 SF



Strategic Location

AREA OVERVIEW



0.5 MILES

Henry Ford
Medical Center

1.2 MILES

Beaumont Medical Center
West Bloomfield

2.0 MILES

Henry Ford Hospital
West Bloomfield



MAPLE PARK MEDICAL OFFICE PARK

**For information,
contact:**

Marlee Kuhn
Vice President
248.581.3356
marlee.kuhn@jll.com

AJ Weiner
Senior Managing Director
248.581.3335
aj.weiner@jll.com

