



New Price
\$9.95 psf net

19,500 SF Functional Warehouse Space

 **JLL** SEE A BRIGHTER WAY

For Sublease

181 Whitehall Dr. Unit 2,
Markham, ON L3R 9T1

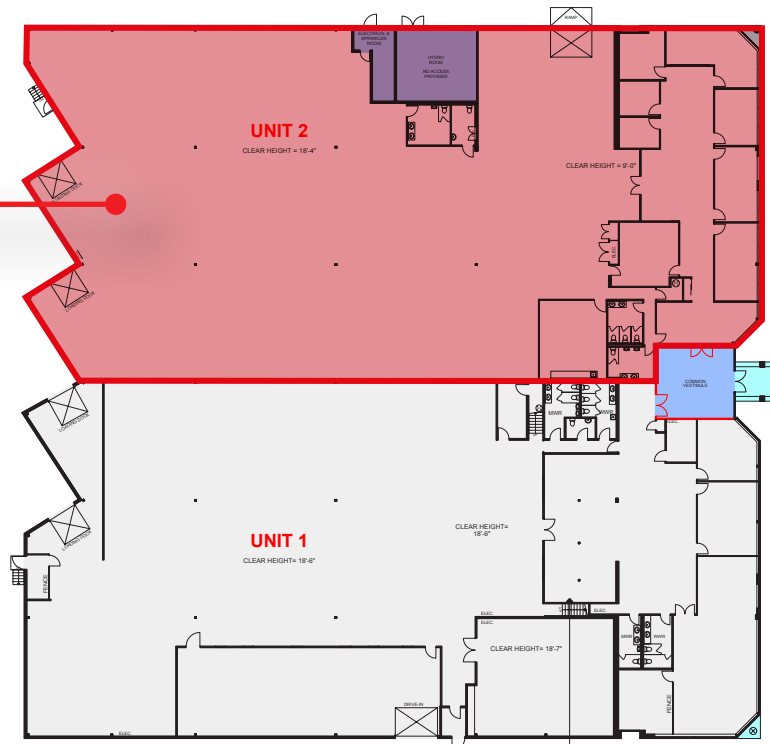
Space Details

| | |
|----------------------|----------------------------|
| Size | 19,500 s.f. |
| Shipping door | 2 truck level & 1 drive-in |
| Clear height | 18'4" |
| Zoning | EMP-BP |
| Asking rent | \$9.95 p.s.f. net |
| TMI (2025) | \$5.66 p.s.f. |
| Possession | Immediate |

Highlights

- Sublease available until September 31, 2027, with a five-year renewal option
- Occupies half of a freestanding building with striking precast and glass construction
- Offices are bright and filled with abundant natural light
- The warehouse is exceptionally clean and meticulously maintained
- Premium location provides immediate access to Highways 407 and 401
- Conveniently situated near local amenities

181 Whitehall Dr.
Unit 2, Markham



Photos

Front



Front



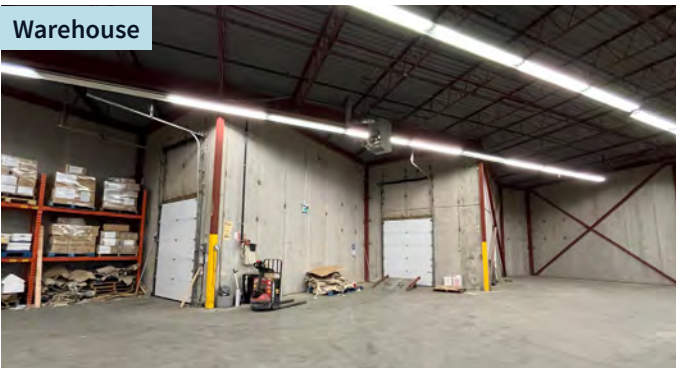
Rear



Rear



Warehouse



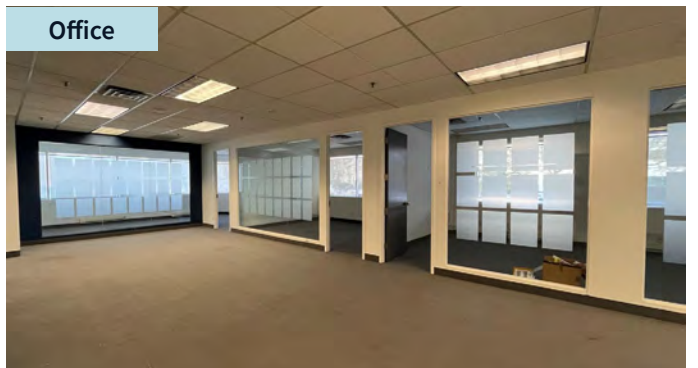
Warehouse



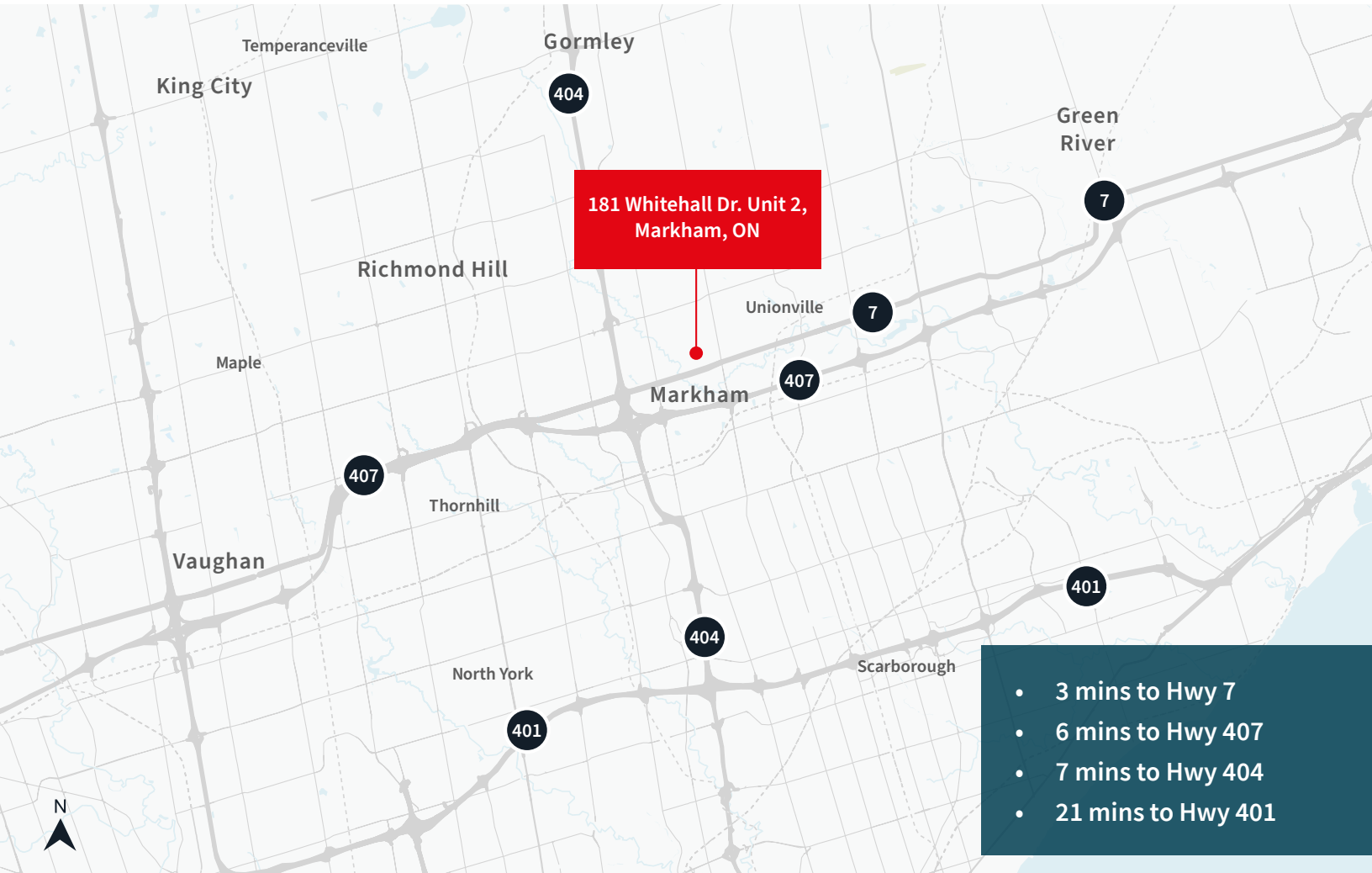
Warehouse



Office



Location map



- 3 mins to Hwy 7
- 6 mins to Hwy 407
- 7 mins to Hwy 404
- 21 mins to Hwy 401

Contact

Bryan Li, MBA**
Executive Vice President
416.564.8388
Bryan.Li@jll.com

Ryan McDonnell*
Associate Vice President
647.204.8134
Ryan.Mcdonnell@jll.com

Jenny Fang*
Sales Associate
416.823.6256
jenny.fang@jll.com

Although information has been obtained from sources deemed reliable, neither Owner nor JLL makes any guarantees, warranties or representations, express or implied, as to the completeness or accuracy as to the information contained herein. Any projections, opinions, assumptions or estimates used are for example only. There may be differences between projected and actual results, and those differences may be material. The Property may be withdrawn without notice. Neither Owner nor JLL accepts any liability for any loss or damage suffered by any party resulting from reliance on this information. If the recipient of this information has signed a confidentiality agreement regarding this matter, this information is subject to the terms of that agreement. ©2025. Jones Lang LaSalle Brokerage, Inc. All rights reserved. ** Broker | * Sales Representative