

The logo for Draper Corporate Park (DCP) features the letters 'DCP' in a bold, sans-serif font. The 'D' is a light green color, while the 'C' and 'P' are a dark blue color.

DRAPER CORPORATE PARK

12159 SOUTH BUSINESS PARK  
DRIVE DRAPER, UTAH 84020



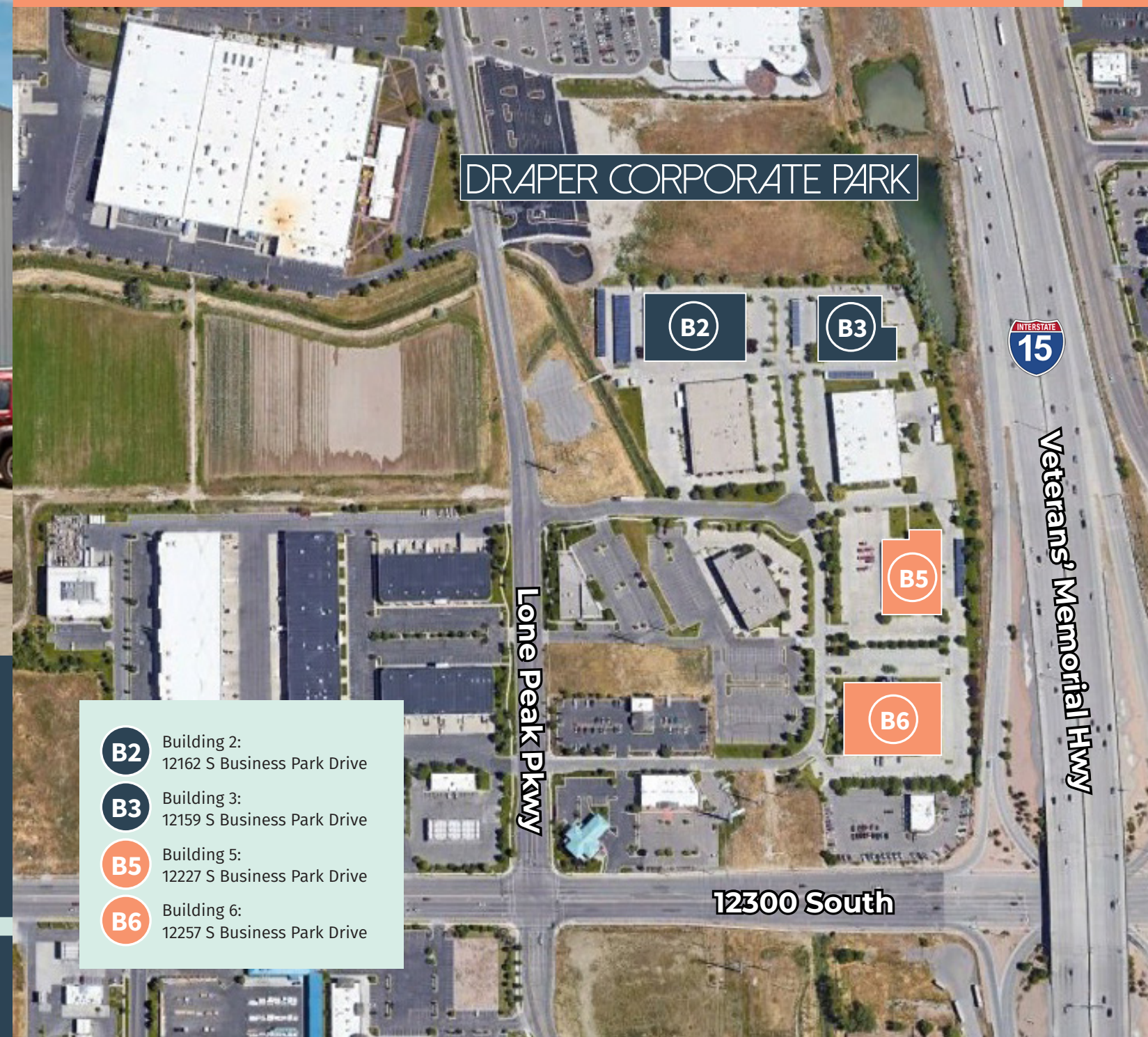
OFFICE SPACE AVAILABLE FOR  
LEASE





- EASY ACCESS TO I-15 AND BANGERTEER HIGHWAY VIA I23RD SOUTH
- BUILDING HAS UNDERGONE SEVERAL EXTERIOR AND LANDSCAPING UPGRADES IN RECENT YEARS
- PROFESSIONAL ON-SITE PROPERTY MANAGEMENT
- 3.0/1,000 PARKING SOME COVERED AVAILABLE
- SPEC SUITES AVAILABLE
- CLOSE TO I23RD SOUTH AMENITIES
- I-15 VISIBLE CROWN SIGNAGE AVAILABLE FOR FULL FLOOR TENANTS
- CENTRAL TO SALT LAKE AND UTAH COUNTY EMPLOYEE BASE
- RENOVATED LOBBIES & RESTROOMS
- \$13.00/SF NNN

# Property Highlights



DRAPER CORPORATE PARK

- B2** Building 2: 12162 S Business Park Drive
- B3** Building 3: 12159 S Business Park Drive
- B5** Building 5: 12227 S Business Park Drive
- B6** Building 6: 12257 S Business Park Drive

Lone Peak Pkwy

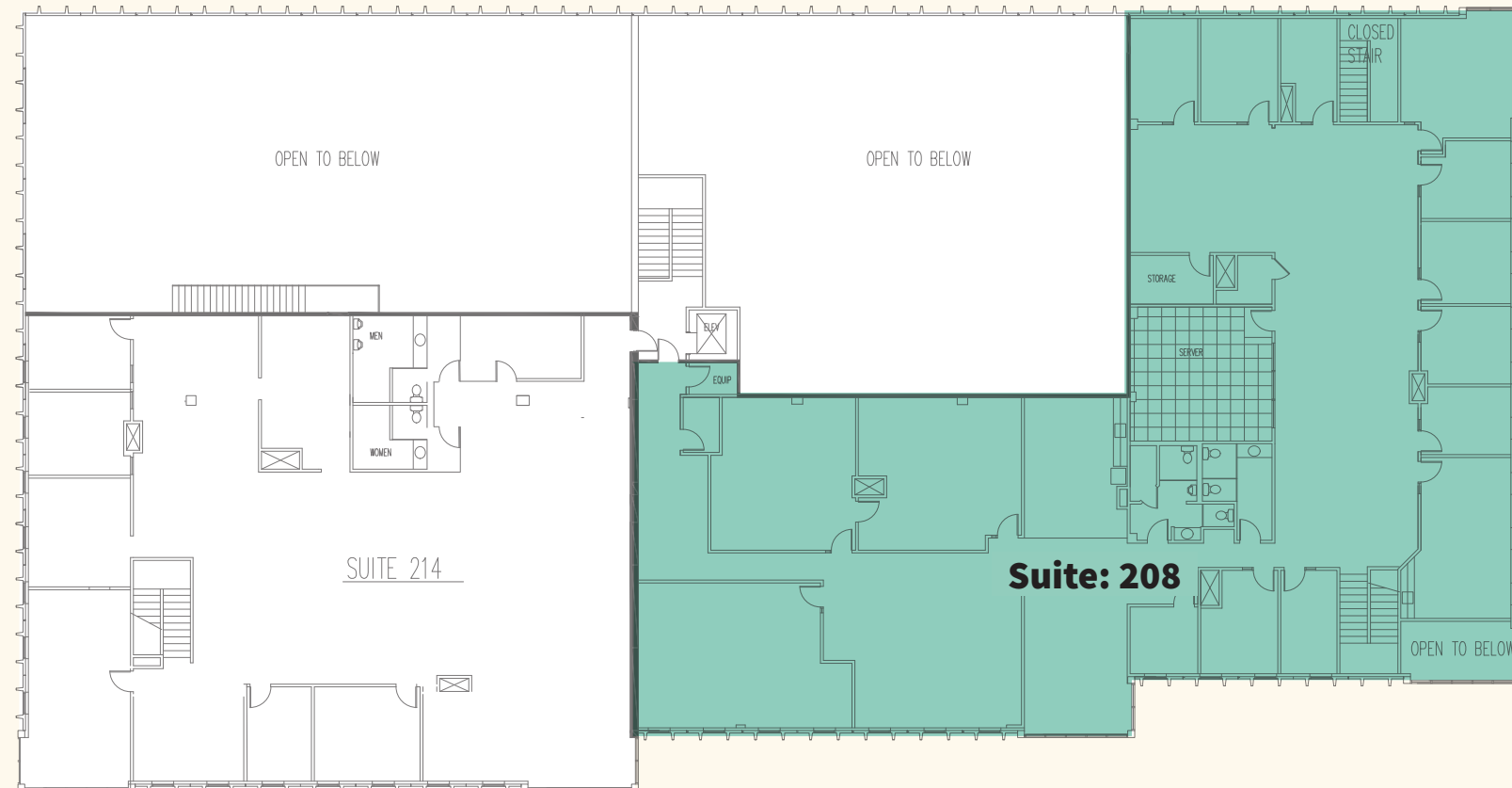
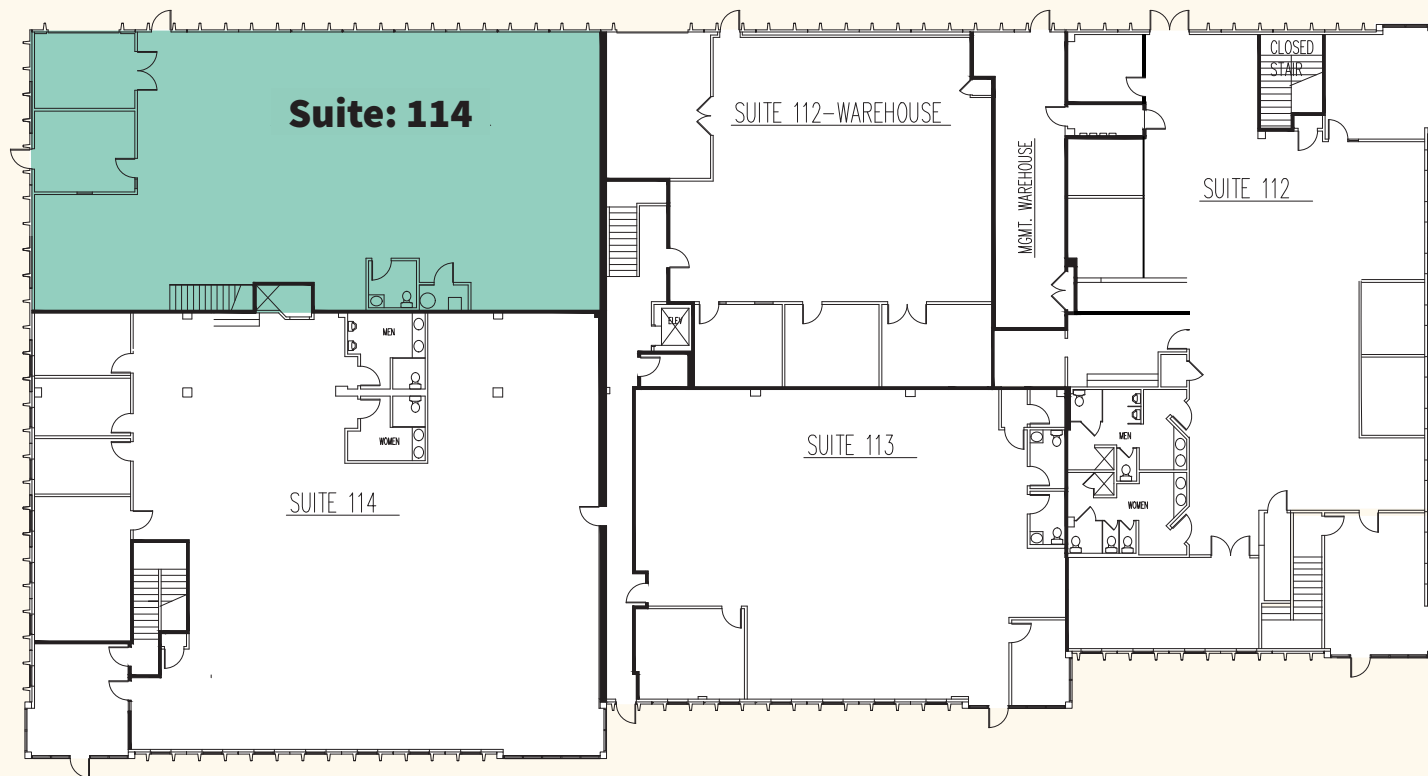


Veterans' Memorial Hwy

12300 South

# BUILDING 2

## Floor Plans



### First & Second Floor

Suite 114 - Warehouse | 3,904 RSF  
Suite 208 - Office | 9,421 RSF

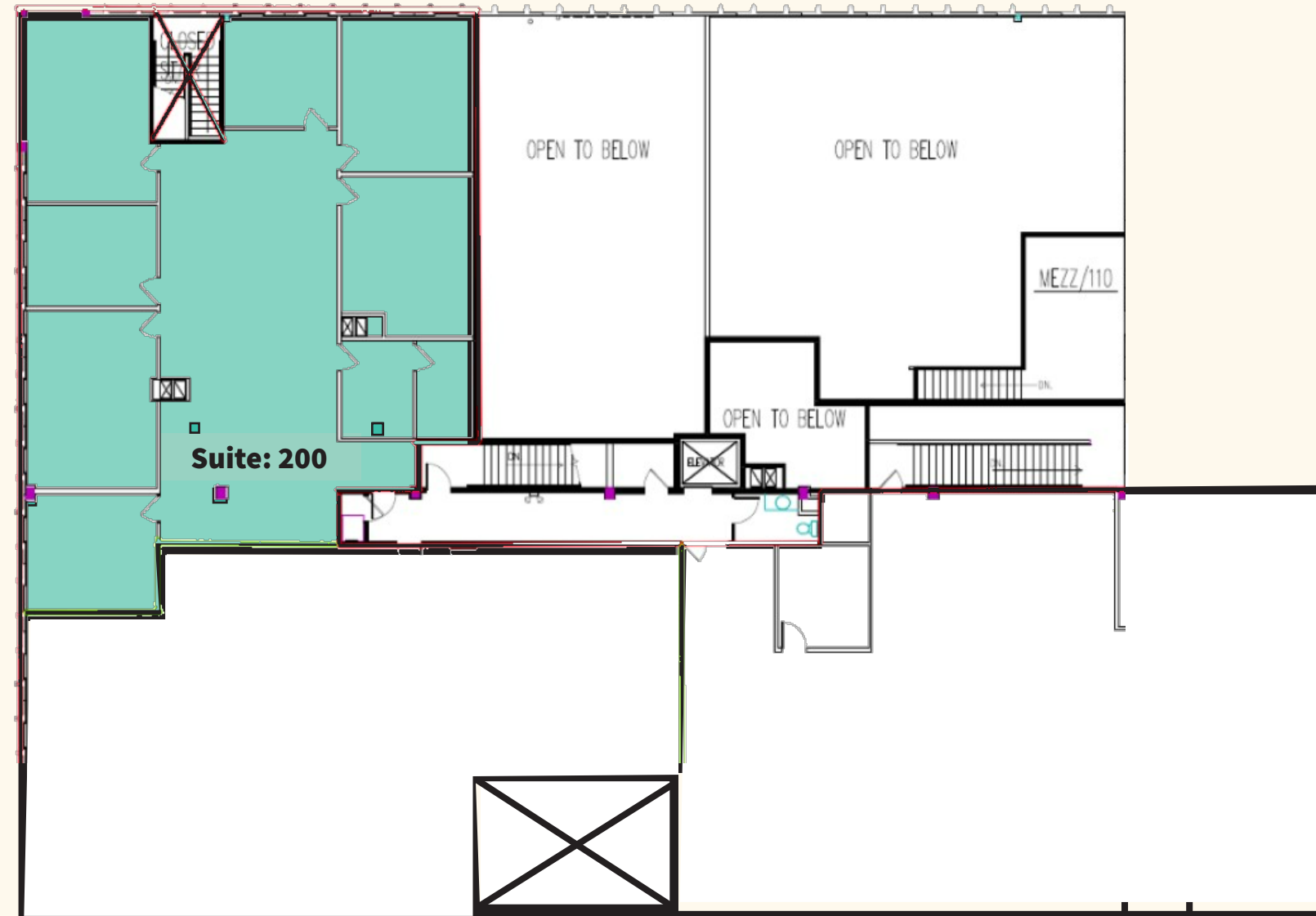
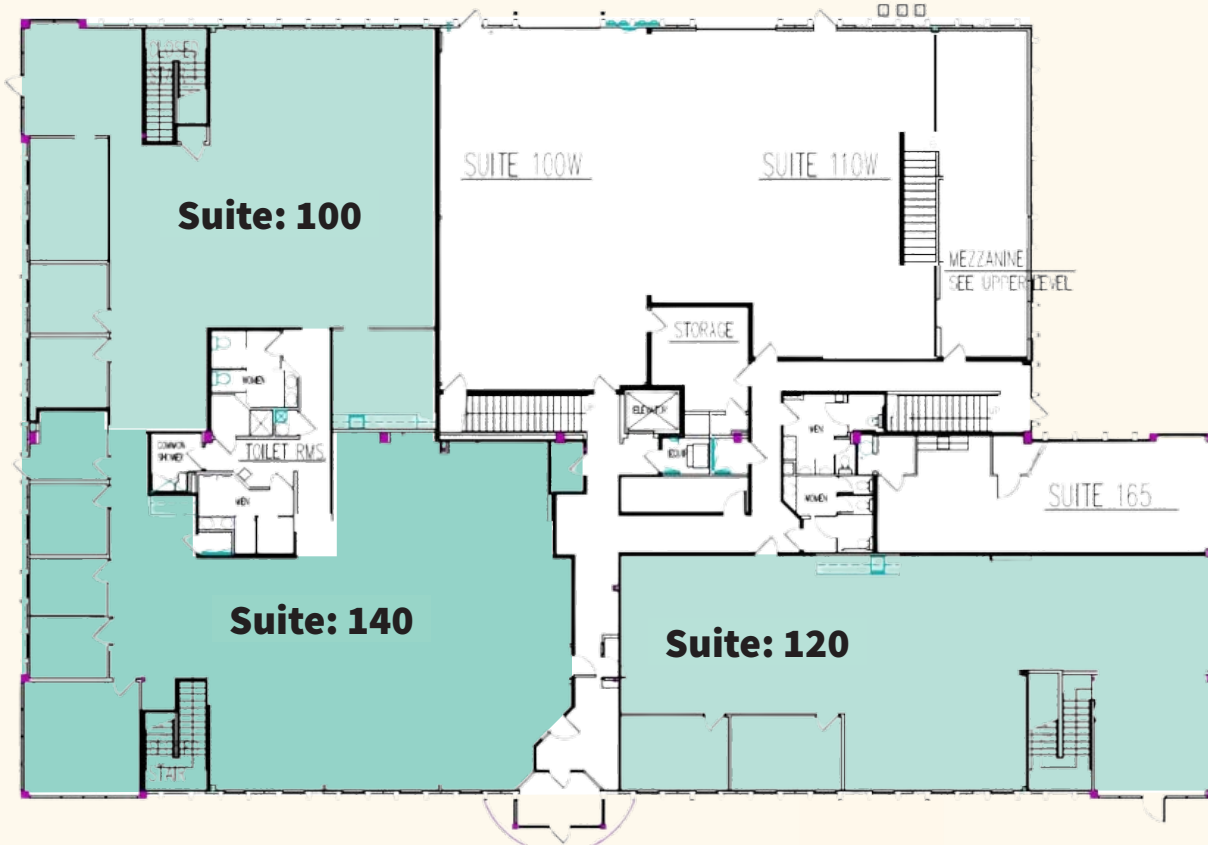
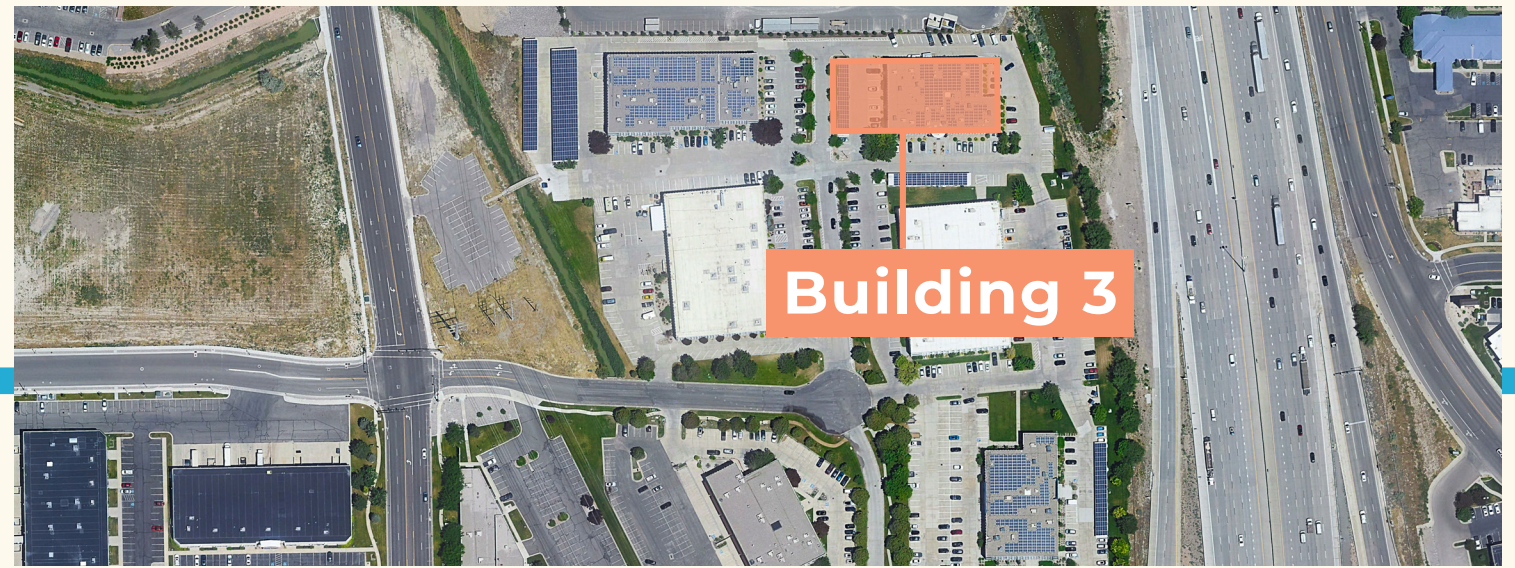
First floor warehouse space  
available with all or a portion of  
the second floor office space

Building OpEx:  
\$7.38

**B2 Internet Options:**  
Xfinity  
Century Link Fiber  
First Digital Fiber

**Flex Space Available August 1, 2026**

# Building 3 Floor Plans



## First & Second Floor

Suite 100 | 3,087 RSF\*  
Suite 120 | 2,861 RSF\*  
Suite 140 | 3,505 RSF\*  
\*available now

Suite 200 | 3,734 RSF

All First Floor Suites are move-in ready with fresh paint, carpet, lighting, and furnishings

**Building OpEx:**

\$6.90

**B3 Internet Options:**

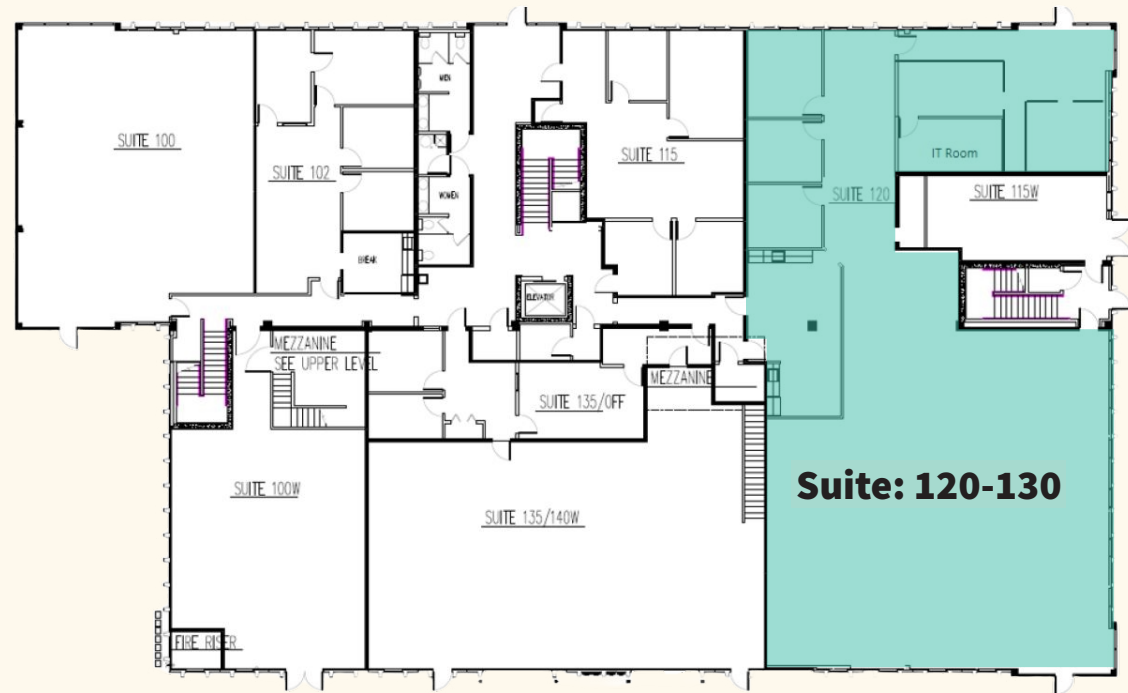
Xfinity

Xmission with Utopia Fiber

Century Link

Comcast

# Building 5 Floor Plans



## First Floor

### Suite 120-130 | 5,929 RSF

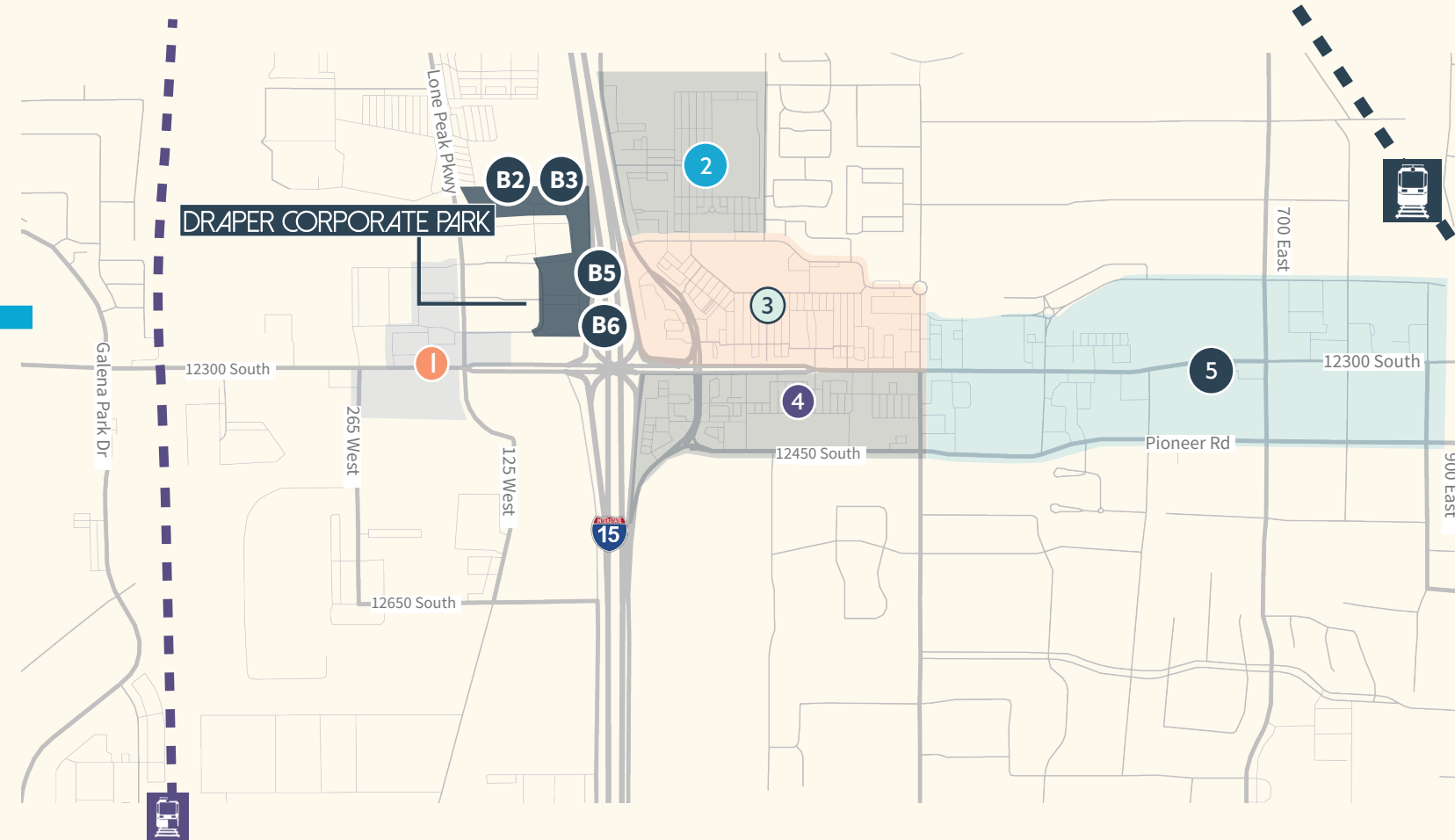
- Roll-up door
- Private entrance

### Building OpEx:

\$8.68

### B5 Internet Options:

Comcast  
Utopia Fiber  
Fibertel  
Direct TV



**1**

- Swig
- Subway
- Thai Land
- Sushi Ya
- LoLo's Hawaiian

**2**

- Cowabunga Bay
- Black Bear Diner
- All Star Bowling
- Vasa Fitness
- SpringHill Suites
- Fairfield Inn
- Cinemark

**3**

- Cafe Zupa's
- In-N-Out
- Kohl's
- Mountain America
- Wasabi Sushi
- Rancheritos
- Goodwood BBQ
- Petco
- Noodles & Co
- U-Swirl
- Sonic Drive-In

**4**

- Cafe Rio
- Panda Express
- Chuck-A-Rama
- Del Taco
- Jamba
- Discount Tire
- T.J. Maxx
- Sally Beauty
- Smith's
- Dollar Tree
- Penny Ann's Cafe

**5**

- Chick-fil-A
- Jordan CU
- Leatherby's
- Swig n'Sweets
- Five Guys
- America First CU
- O'Reilly
- Shiny Shell Carwash
- Ballard's Iceberg
- Papa Johns
- University CU



**FOR MORE INFORMATION, PLEASE CONTACT:**

**DAVID NIXON**

+1 801 456 9518

[david.nixon@jll.com](mailto:david.nixon@jll.com)

**LAURA DEHTEAR**

+1 801 921 3467

[laura.dehtear@jll.com](mailto:laura.dehtear@jll.com)

Jones Lang LaSalle Brokerage, Inc.

©2026 Jones Lang LaSalle LP, Inc. All rights reserved. All information contained herein is from sources deemed reliable; however, no representation or warranty is made to the accuracy thereof.