


Industrial Units Available



For lease

151 Nashdene Rd, Scarborough, ON

 **JLL** SEE A BRIGHTER WAY

Property details



Address

151 Nashdene Rd, Scarborough



Location

Markham Rd/McNicoll Ave



Zoning

E 0.7



Highlights

- Professionally managed industrial campus
- Rare small-bay units
- Ample on-site parking
- High-demand location with excellent Highway 401
- TTC at doorstep

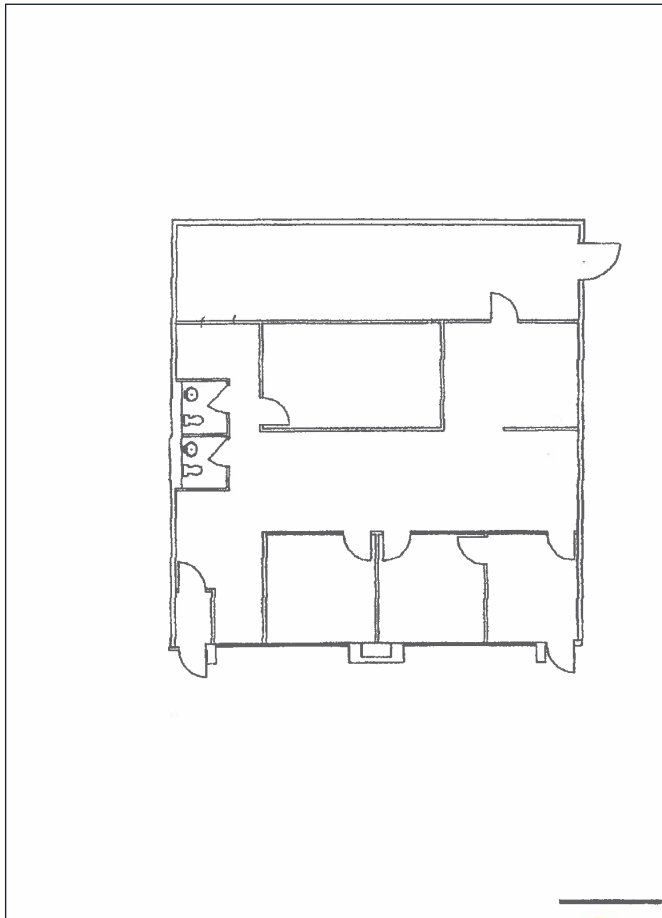
Available units

| 151 Nashdene Rd | Unit 10-11 | Unit 23 | Unit 24 | Unit 42 |
|------------------------|-------------------------|-------------------------|-------------------------|-------------------------|
| Size | 2,200 sf | 1,604 sf | 1,270 sf | 1,260 sf |
| Asking rent | \$18.95 psf net | \$18.95 psf net | \$18.95 psf net | \$18.95 psf net |
| TMI (2026) | \$6.06 psf | \$6.06 psf | \$6.06 psf | \$6.06 psf |
| Clear height | 14' | 14' | 14' | 14' |
| Shipping | Shared truck level door | Shared truck level door | Shared truck level door | Shared truck level door |
| Possession date | Immediate | Immediate | Immediate | Immediate |

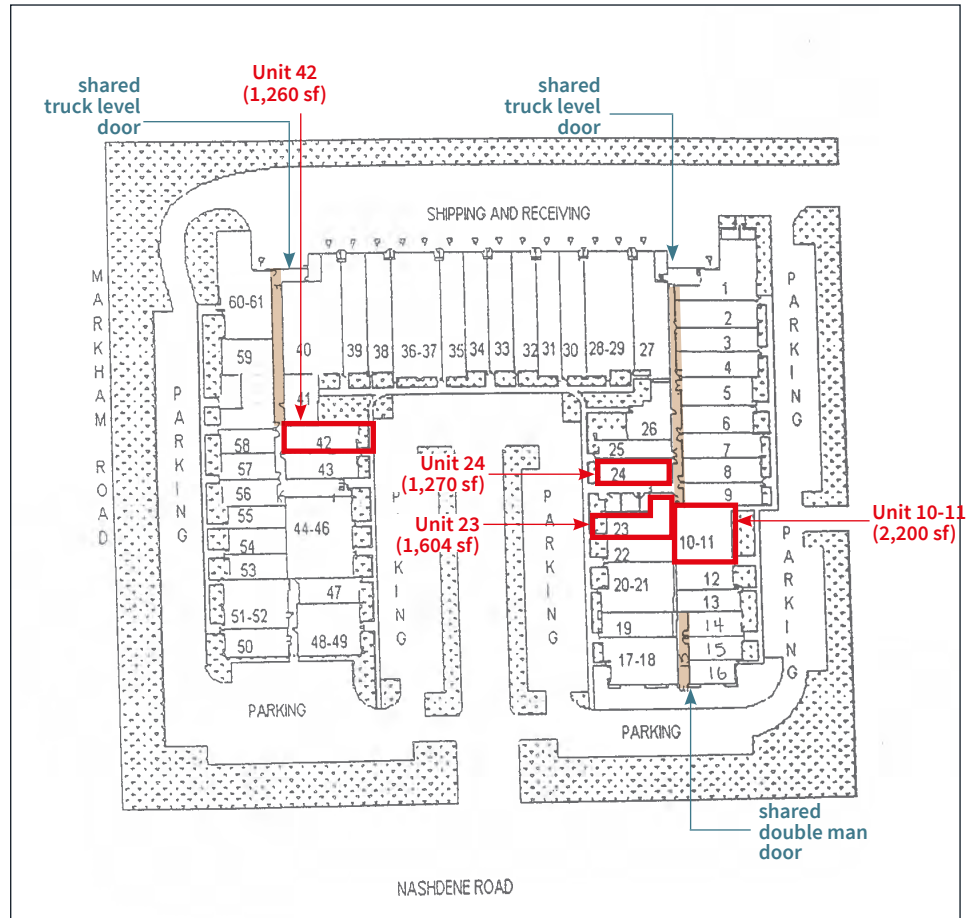


Floor Plan

Unit 10-11



Building Plan



- Available Units
- Corridor

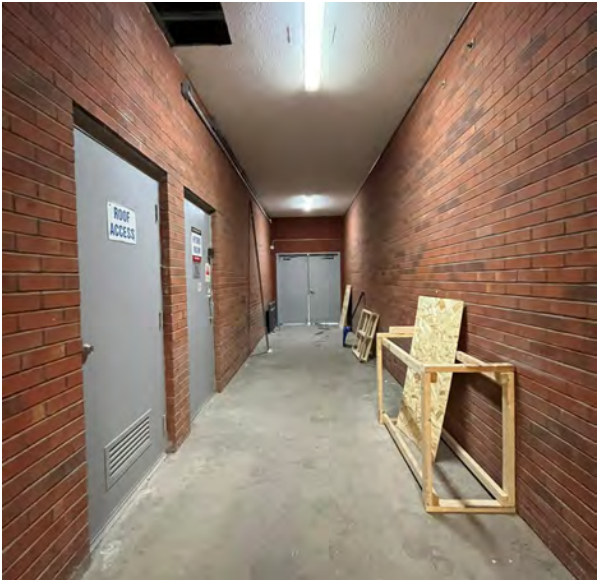
151 Nashdene Rd/Scarborough, ON

Photos

Building



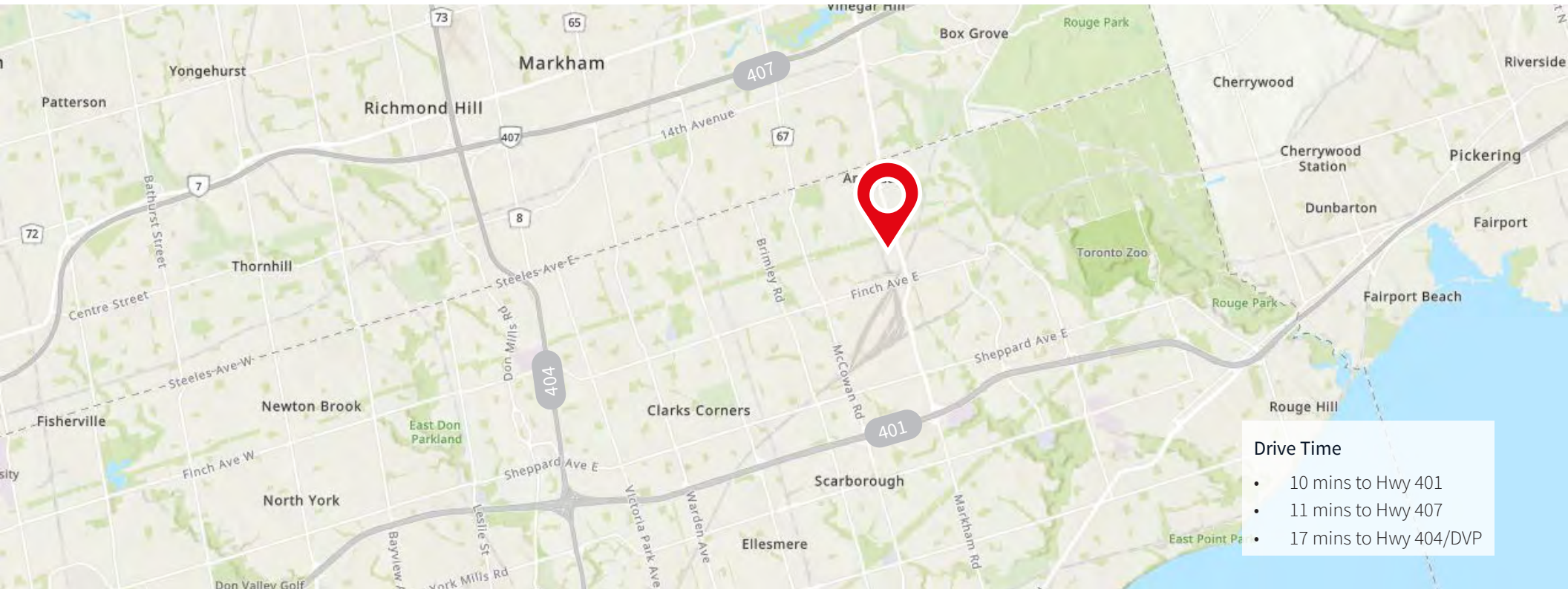
Unit 10-11



151 Nashdene Rd/Scarborough, ON

Photos





For more information, contact:

Bryan Li, MBA**

Executive Vice President

+1 416.564.8388

bryan.li@jll.com

Ryan McDonnell*

Associate Vice President

+1 647.204.8134

ryan.mcdonnell@jll.com

Jenny Fang*

Sales Associate

+1 416.823.6256

jenny.fang@jll.com

Drive Time

- 10 mins to Hwy 401
- 11 mins to Hwy 407
- 17 mins to Hwy 404/DVP