

DOWNTOWN BROOKLYN RETAIL OPPORTUNITY

W 51 Willoughby Street Brooklyn

New retail at the base of a 295-unit residential tower,
anchoring the beginning of Willoughby Street at the intersection
with Brooklyn Commons



51 Willoughby Street Brooklyn

Location

51 Willoughby Street
Between Jay & Lawrence Streets

Size

Ground Floor: 1,140 sf

Frontage

Approx. 18' on Willoughby Street

Possession

Immediate

Neighboring Retailers

Quality Greens Kitchen, sweetgreen,
Shake Shack, Cava, DIG, Raising Cane's

Transportation

Access to 13 subway lines across seven stations
within ½ mile and steps from the Jay St-Metro-
Tech subway station

Comments

- Within three blocks of six lower schools (3K+ students) and four daycares and a block away from the NYU campus (7K+ students)
- Two blocks away from the newly open Abolitionist Place Park
- 14,000+ new residential units within a 1-mile radius

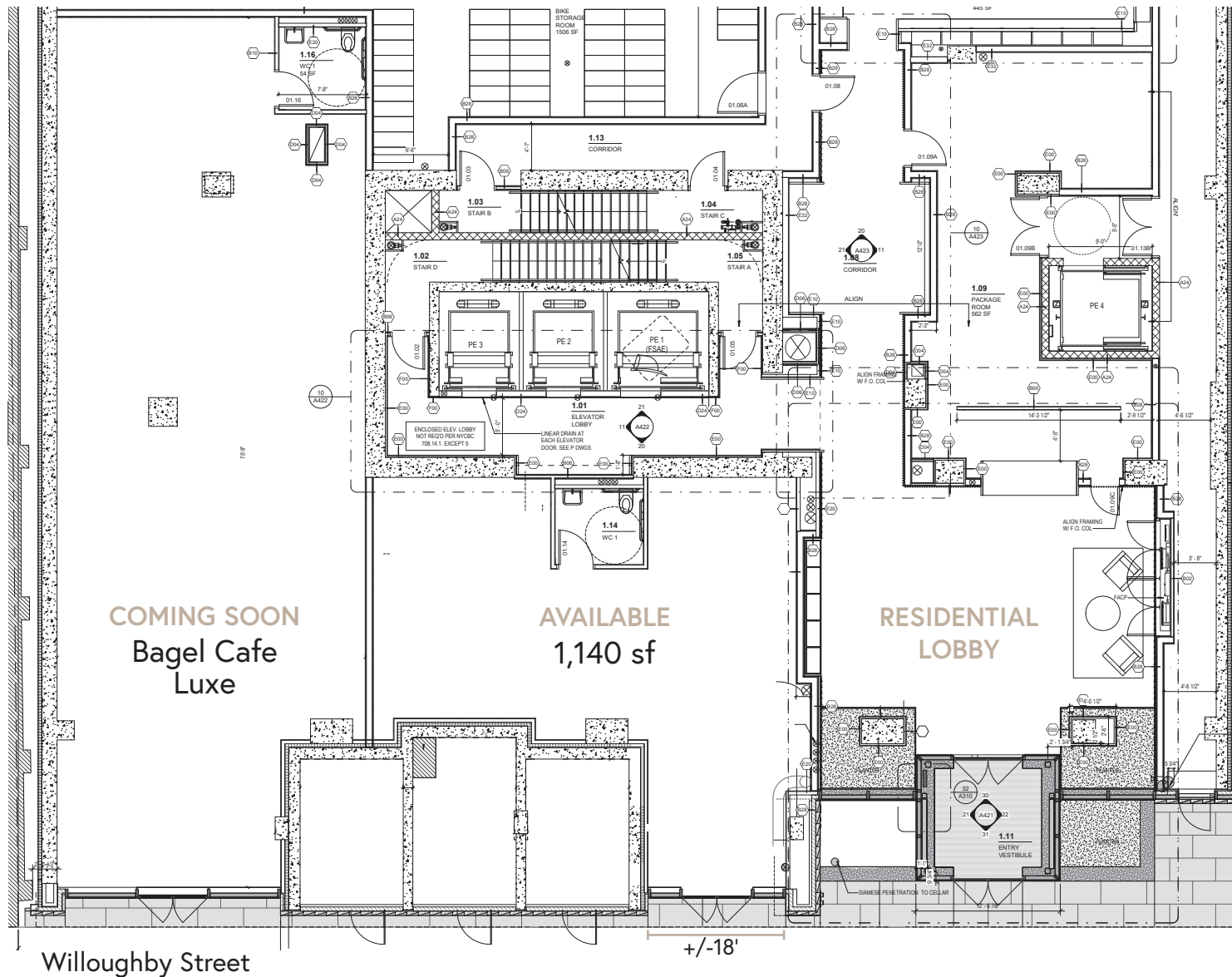
Contact

RYAN P. CONDREN
(212) 220-4117
Ryan.Condren@jll.com

GEORGE DANUT
(212) 220 4121
George.Danut@jll.com



51 Willoughby Street Brooklyn



Jones Lang LaSalle Brokerage, Inc.
330 Madison Avenue
New York, NY 10017

Although information has been obtained from sources deemed reliable, neither Owner nor JLL makes any guarantees, warranties or representations, express or implied, as to the completeness or accuracy as to the information contained herein. Any projections, opinions, assumptions or estimates used are for example only. There may be differences between projected and actual results, and those differences may be material. The Property may be withdrawn without notice. Neither Owner nor JLL accepts any liability for any loss or damage suffered by any party resulting from reliance on this information. If the recipient of this information has signed a confidentiality agreement regarding this matter, this information is subject to the terms of that agreement.

©2026 Jones Lang LaSalle IP, Inc.
All rights reserved.



DOWNTOWN BROOKLYN

