



For lease

214 West Tremont Avenue, Charlotte, NC 28203

 **JLL** SEE A BRIGHTER WAY

Opportunity features

- Move in ready with creative, modern finishes
- Located in the heart of South End, with access to an abundance of food, beverage, and fitness options
- Walking distance to the Light Rail and Rail Trail
- Convenient accessibility parking

Building features

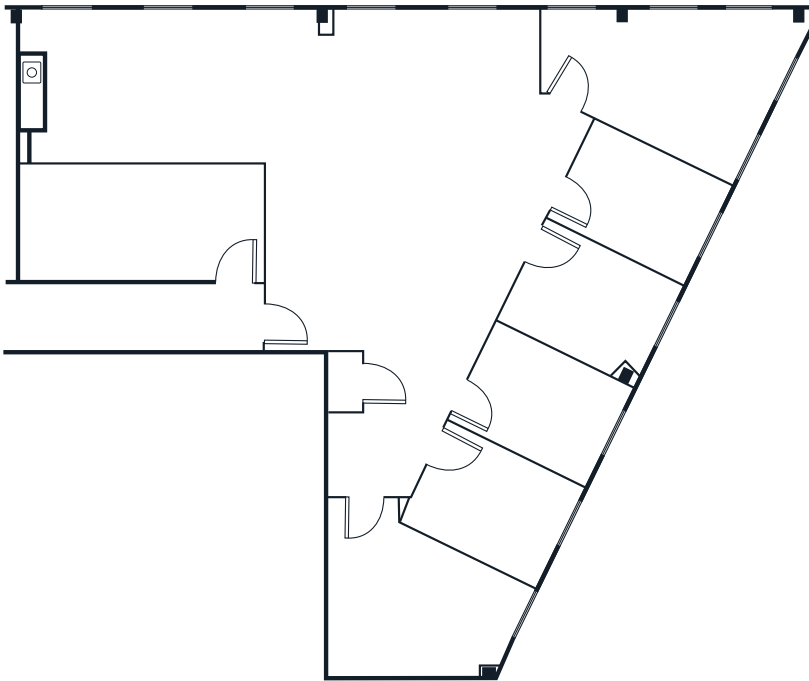
Building size	± 29,341 RSF
Available	± 2,175 - 4,030 RSF
Lease rate	Call for pricing
Year built	2007
Parking ratio	2.75/1,000



214 West Tremont Avenue / Charlotte

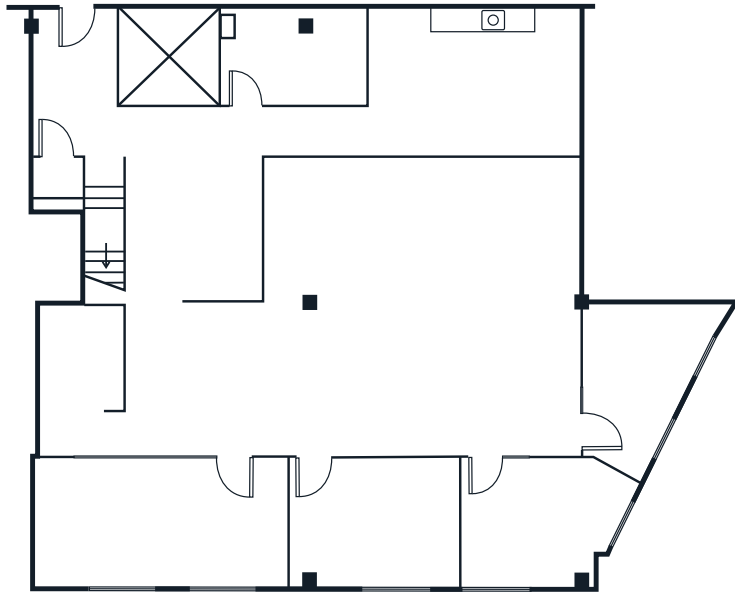
2nd Floor - Suite 203

Available: ± 2,175 rsf



3rd Floor - Suite 302

Available: ± 4,030 rsf



Main level



Mezzanine



JLL

Claiborne Mulhern

Claiborne.Mulhern@jll.com

+1 434 249 7465

Karah Tanneberger

Karah.Tanneberger@jll.com

+1 704 235 8946