



For Lease

Luxury Clayton Office

- Luxury mid-rise office building in the heart of Clayton
- New lobby finishes
- One block from county courthouse
- Walk to shops and restaurants
- In-building parking ratio of 3.3/1,000 SF
- Local, on-site ownership and professional management
- Exterior building signage available

AVAILABILITIES

- 6th floor: ±4,469 SF contiguous
- 8th floor: ±10,038 SF contiguous

LEASE RATE

- \$29.50/SF, full service

Jones Lang LaSalle Americas, Inc., a licensed real estate broker in 48 states

David Biales, CCIM
+1 314 261 7368 | david.biales@jll.com

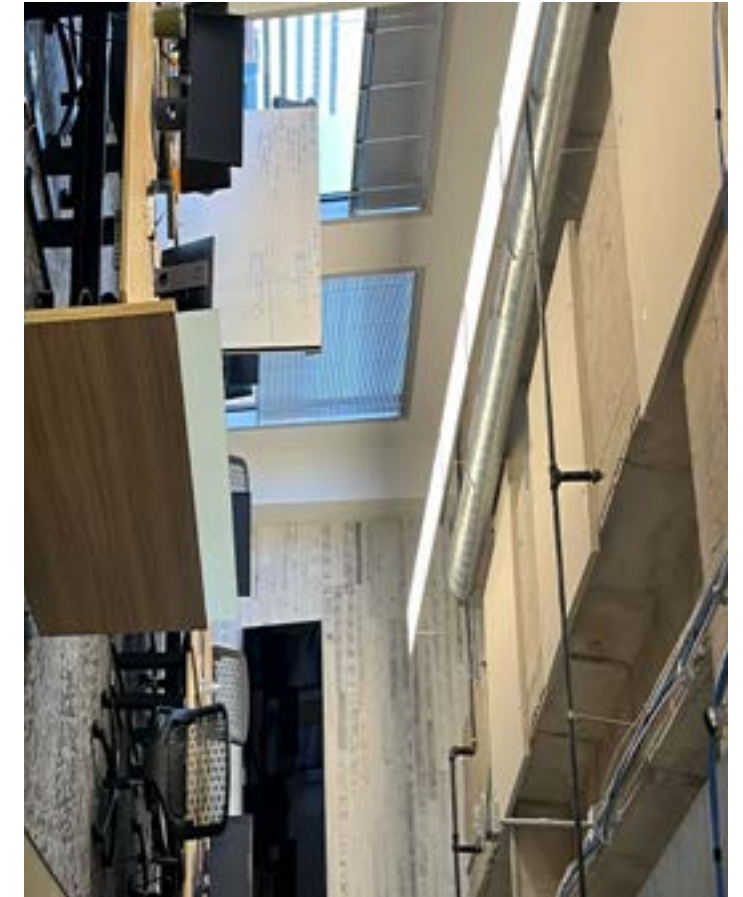
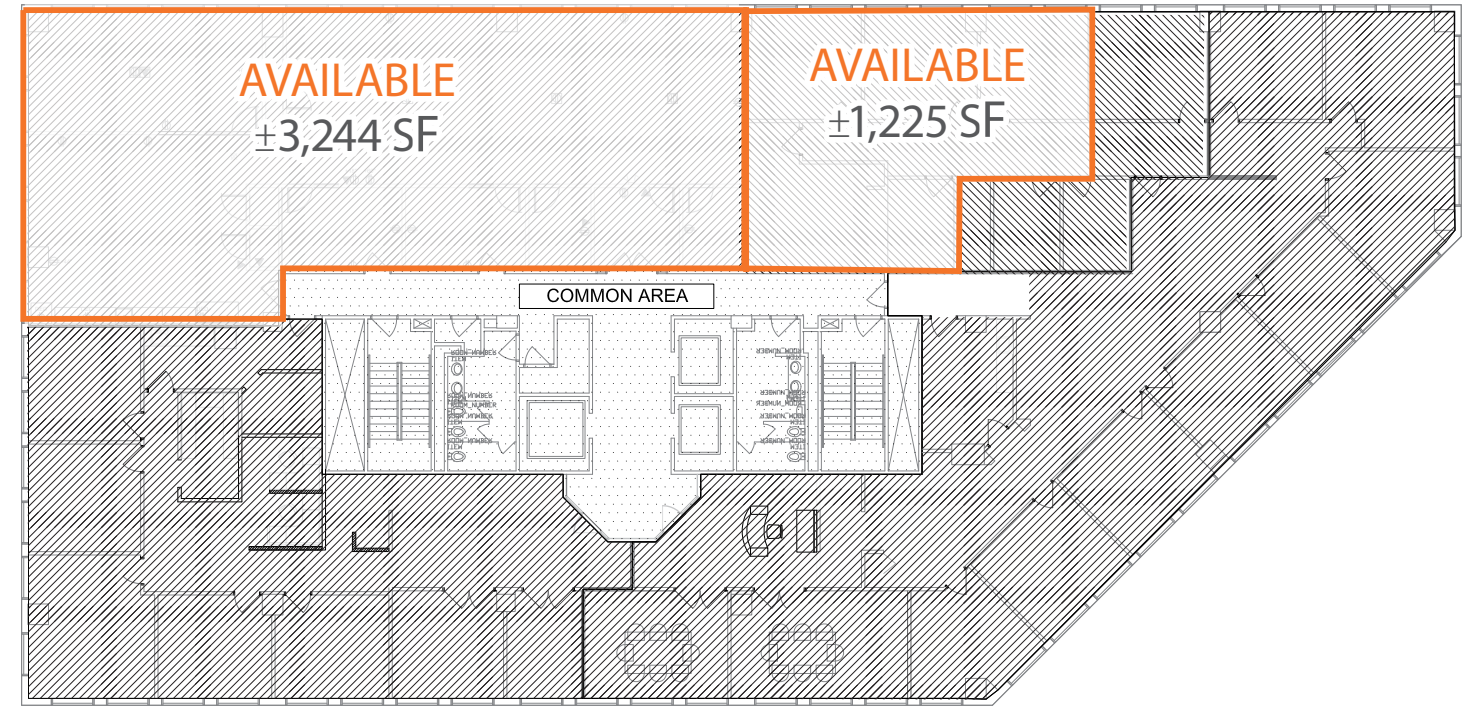


NEW LOBBY FINISHES

These new bright and airy finishes create an updated look and welcoming atmosphere for employees.



6th FLOOR



NEW 8TH FLOOR AVAILABILITY

Open, Flexible Layout

Endless configuration possibilities to match your unique vision

Polished Concrete Floors

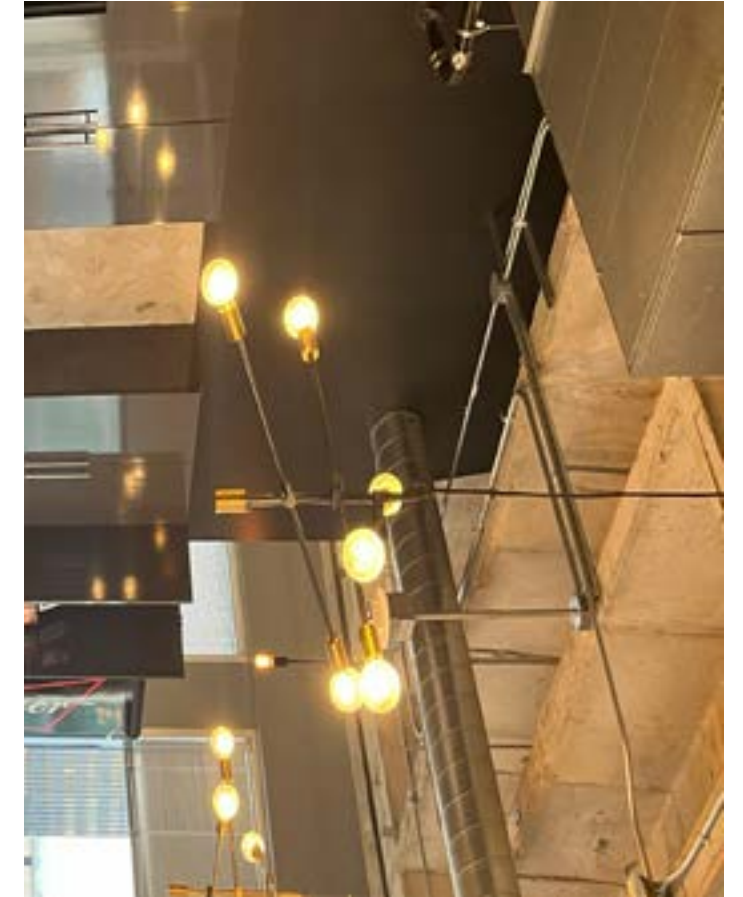
Durable, low-maintenance surfaces with contemporary industrial appeal

Exposed Ceiling Structure

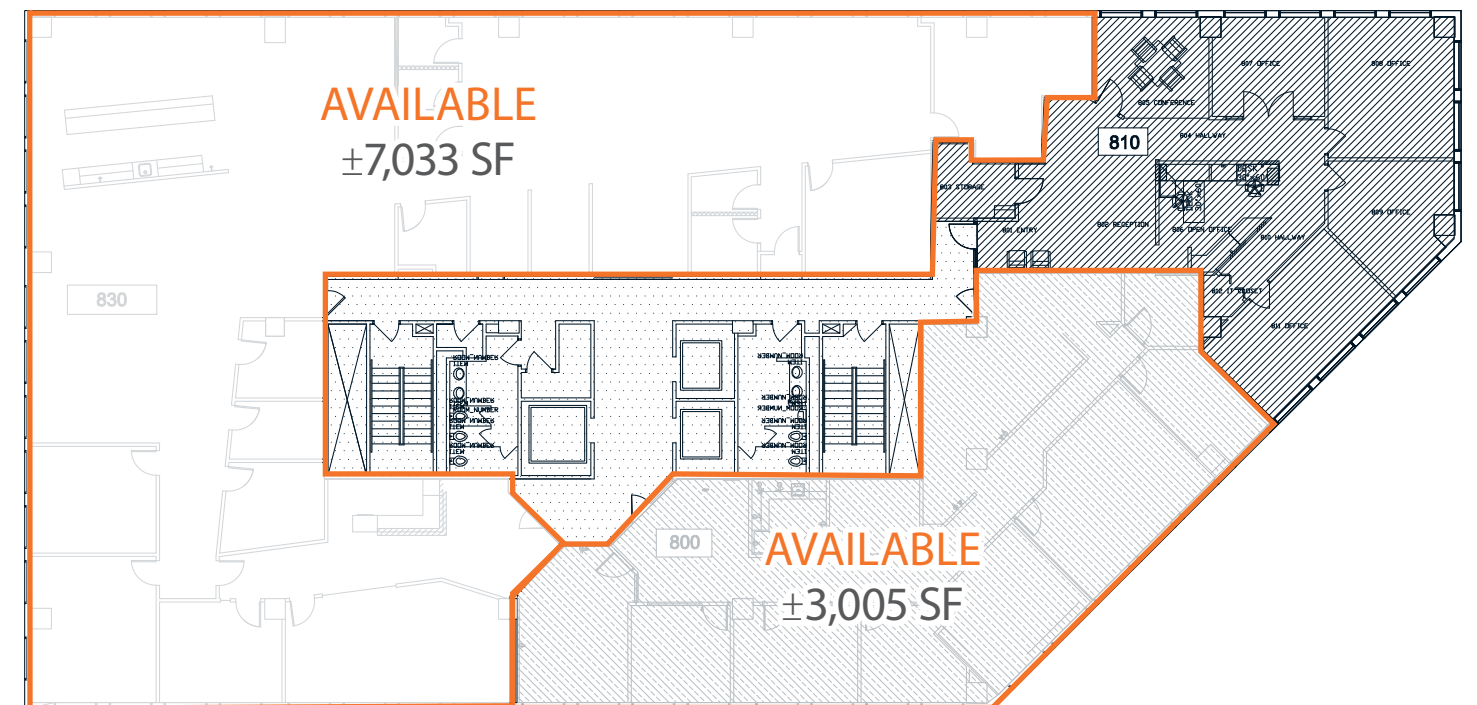
Dramatic height and architectural interest that inspires creativity

Abundant Natural Light

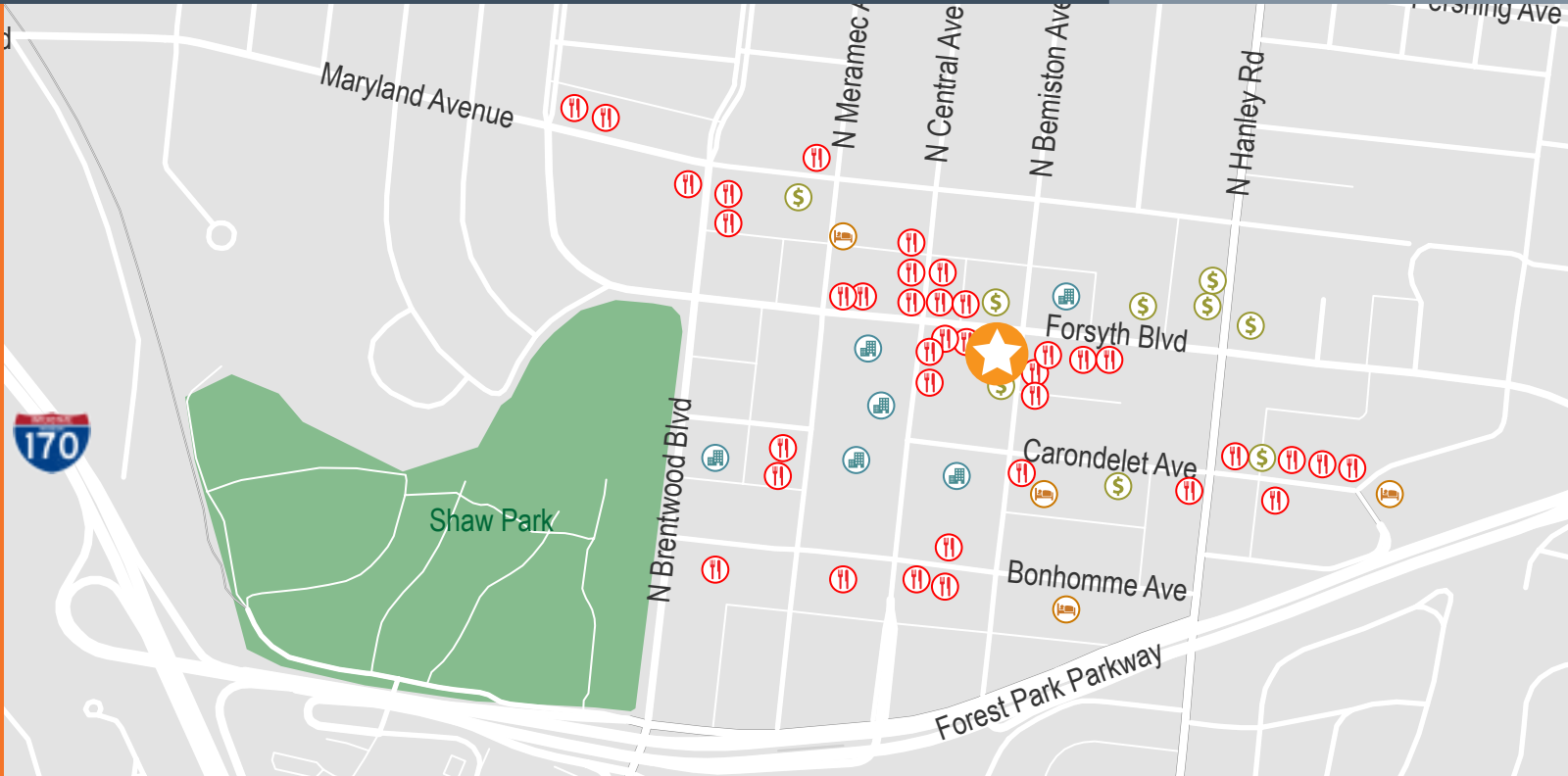
Bright, energizing environment that fuels innovation



8th FLOOR



Location



RESTAURANTS

- Wasabi Sushi Bar
- Blue Elephant Royal Thai Cuisine
- Potbelly Sandwich Shop
- Café Napoli
- Subway
- Pasteria
- Starbucks
- Chipotle
- John P. Fields
- Sauce on the Side
- Cantina Laredo
- Louie's Wine Dive
- Peel Wood Fired Pizza
- The Crossing
- the BAO
- 801 Chophouse
- Smoothie King
- C.J. Mugg's
- Plaza Grill Restaurant
- Capital Grille
- Tonys

HOTELS

- Clayton Plaza Hotel
- Le Méridien St. Louis Clayton
- Seven Gables Inn
- The Ritz-Carlton

BANKS

- Simmons Bank
- BOS (Bank of Springfield)
- Central Bank of St. Louis
- Sterling Bank
- Commerce Bank
- Midwest Regional Bank
- PNC Bank
- US Bank

GOVERNMENT BUILDINGS

- Clayton City Hall
- St. Louis County Police Dept
- St. Louis County Dept of Justice Services
- St. Louis County Circuit Clerk

David Biales, CCIM
Managing Director
+1 314 261 7368
david.biales@jll.com

jll.com/st-louis
+1 314 338 2080

