



469 Central Ave

Highland Park, IL 60035



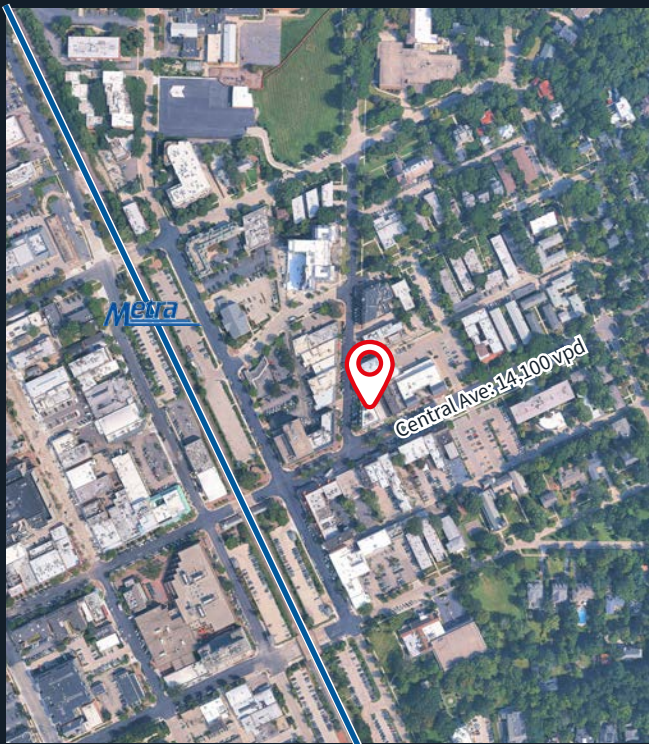
Steve Schwartz
Senior Vice President
+1 312 228 2157
steve.schwartz@jll.com

Natalie Belloff
Associate
+1 312 228 2008
natalie.belloff@jll.com



Property overview & demographics

- Easy access with parking along both sides of Central Street
- Positioned on Highland Park’s retail corridor, Central Street, with great visibility and foot traffic
- Take advantage of this non-vented restaurant space with existing grease traps and plumbing
- Surrounded by successful neighbors such as Country Kitchen, Perfect Blend, Norton’s, Yummy Bowl, Little French Guy, and other Highland Park classics



Address	469 Central Ave Highland Park, IL 60035
Size	837 SF
Asking rent	Upon request
Status	Formerly Luna Rosa Wine Shop
Possession	Immediate

Area retailers



	1 mile	3 miles	5 miles
Population	9,230	44,756	98,869
Daytime population	12,975	51,702	141,442
Avg household income	\$217,786	\$236,989	\$257,976
Households	3,980	17,494	37,243

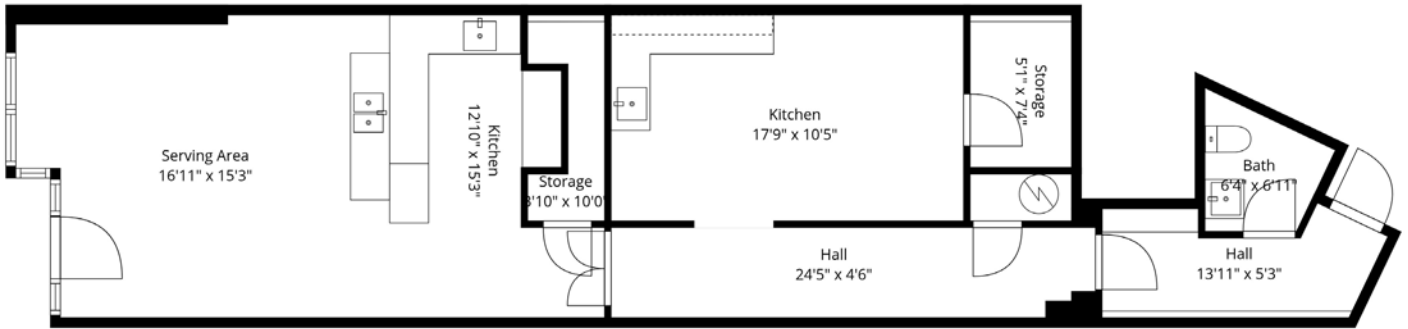


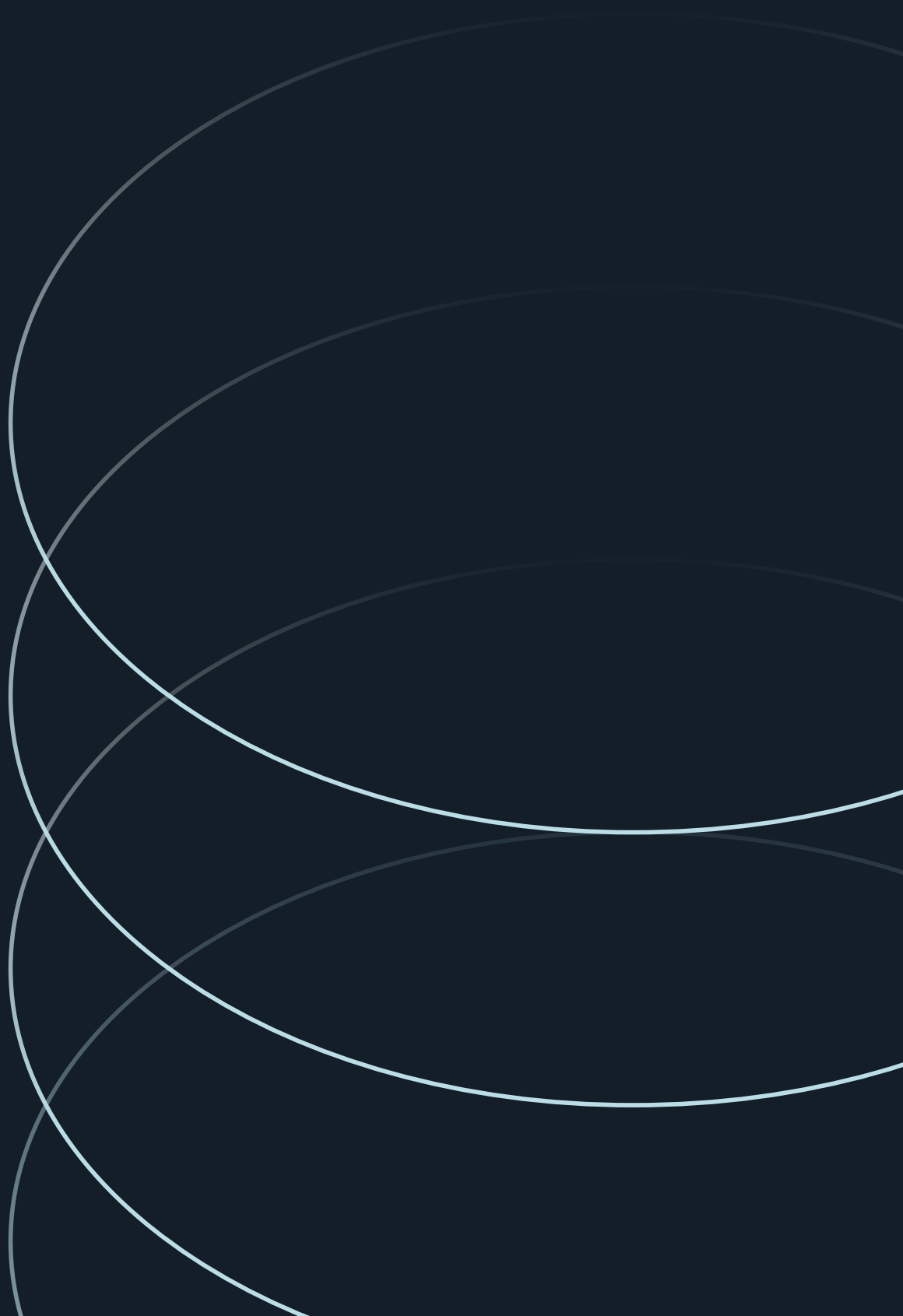
Site plan & photos

Available
837 SF



Central Ave: 14,100 vpd





Steve Schwartz
Senior Vice President
+1 312 228 2157
steve.schwartz@jll.com

Natalie Belloff
Associate
+1 312 228 2008
natalie.belloff@jll.com