



For lease

24,609 - 59,678 SF Available

10300 Metric Blvd, Austin, TX 78758

Suite 150 - 35,069 SF

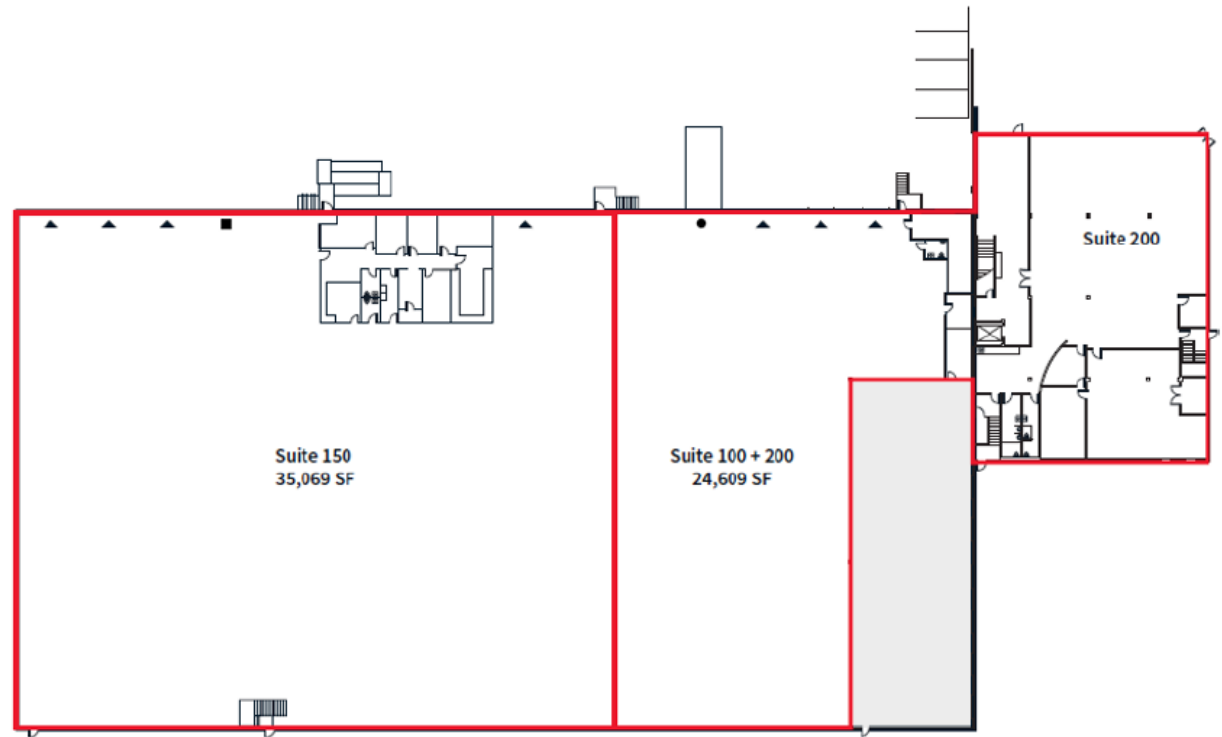
Property specifications

- Available 5/1/2026
- +/-27' - 29' clear height
- 1 oversized dock high door
- 4 standard dock high doors

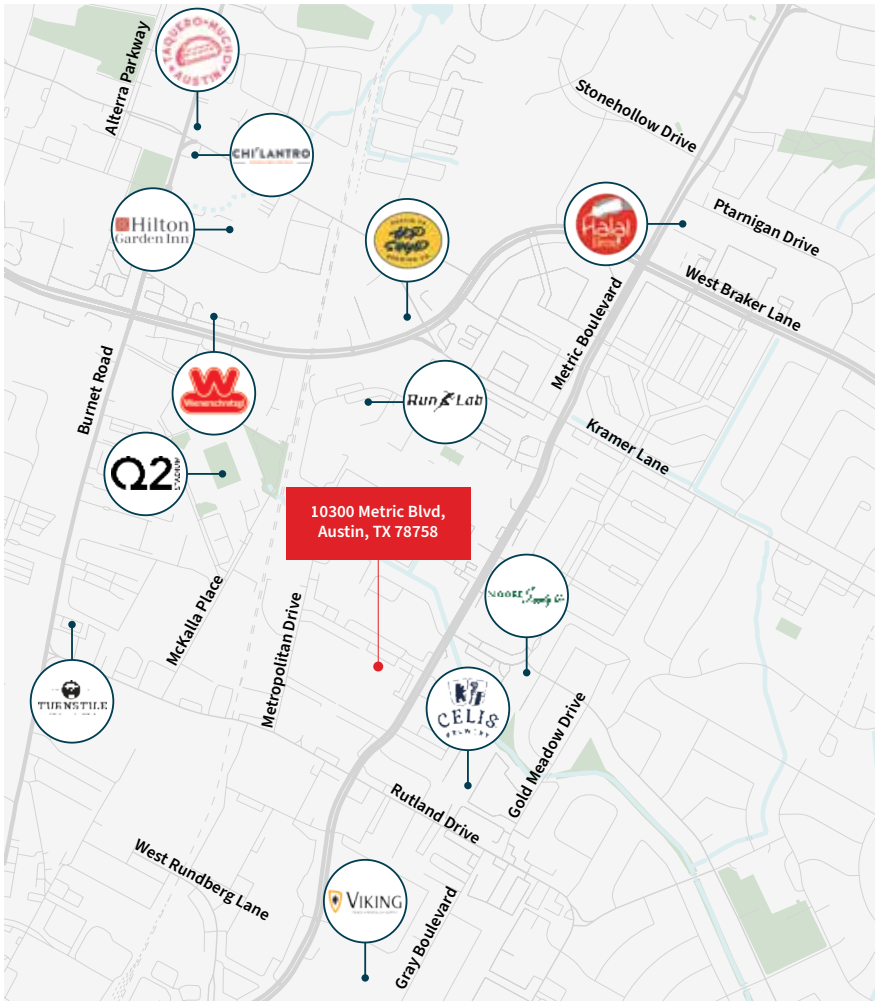
Suite 100/200 - 24,609 SF

Property specifications

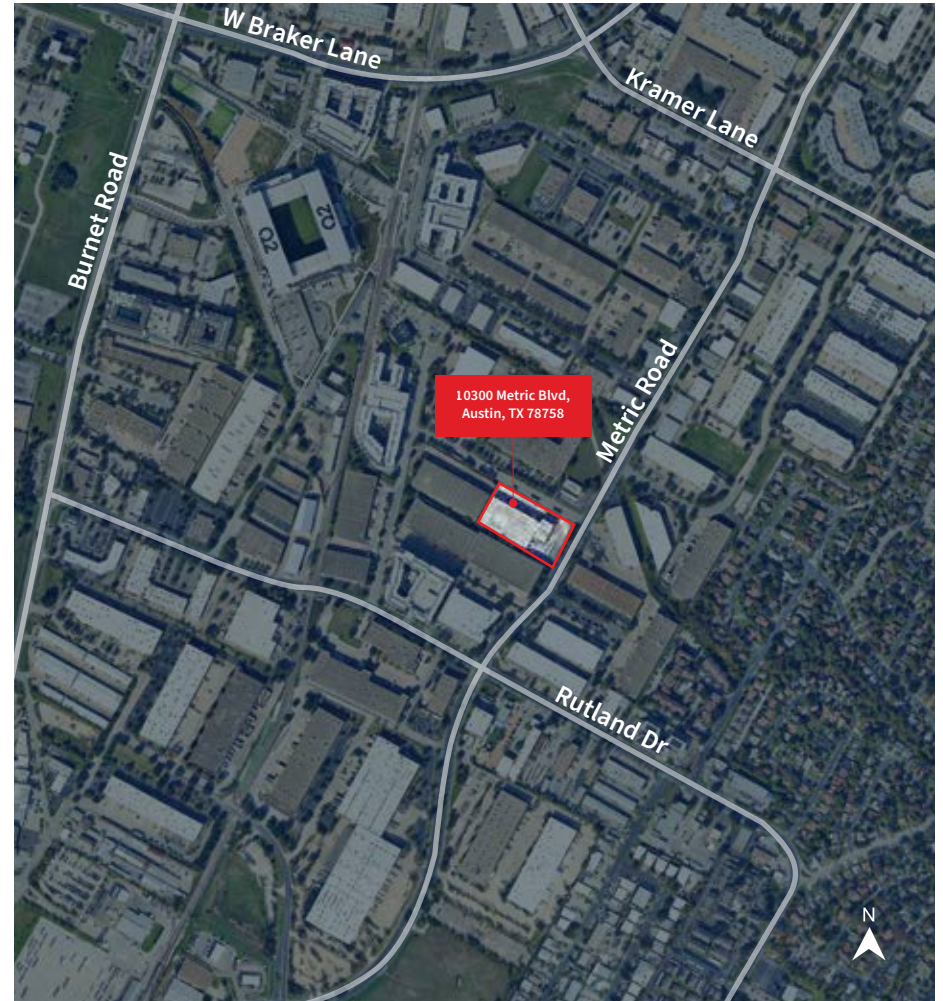
- 3 dock high doors
- 1 ramped door
- 8,805 SF Office/showroom
- 15,804 SF Warehouse
- Available within 30 days after lease execution

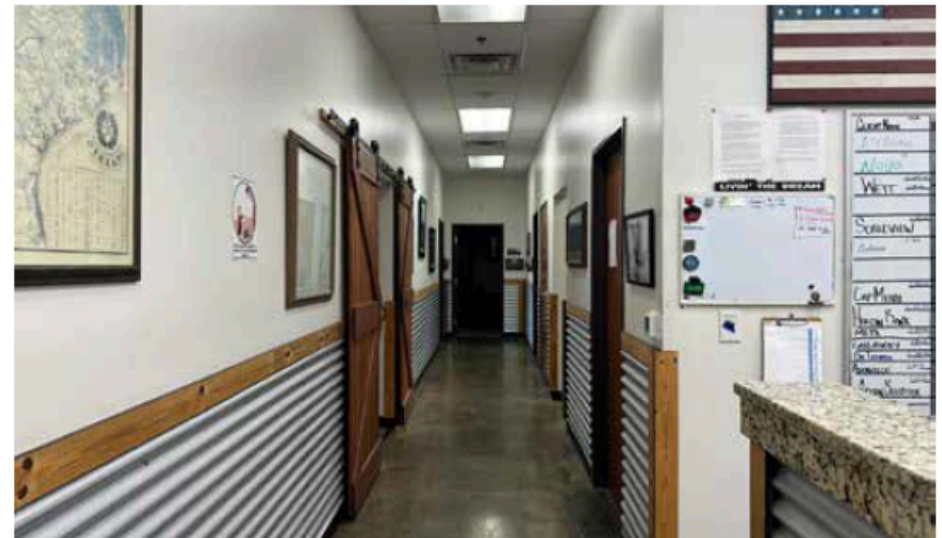
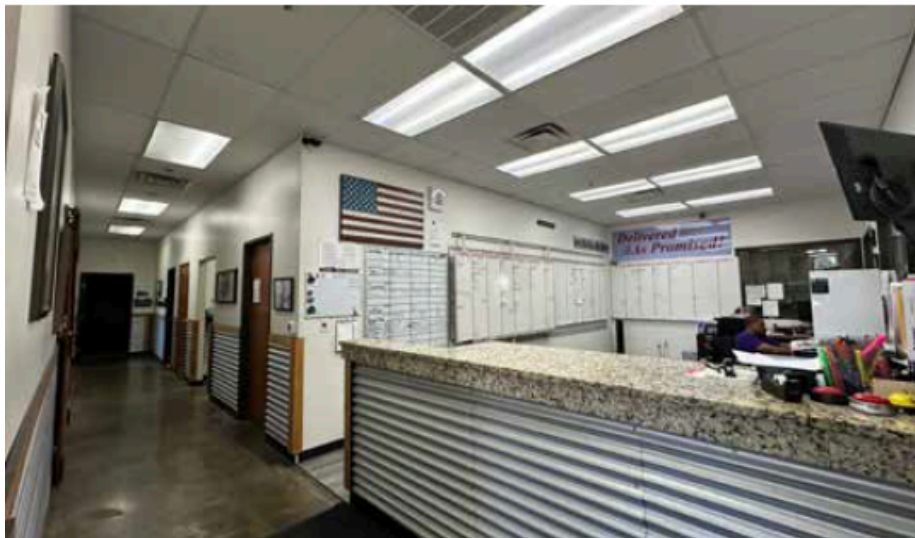
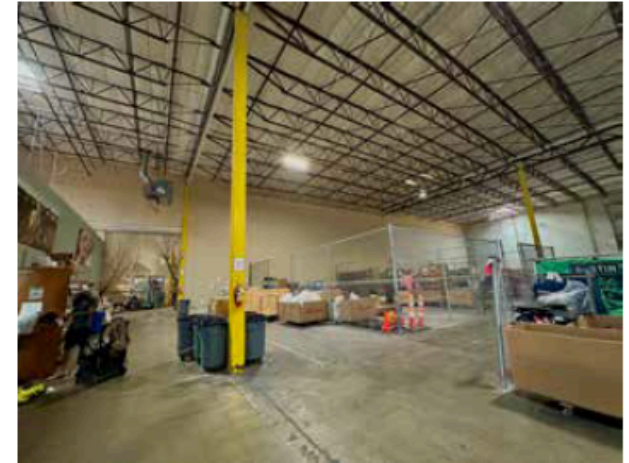


Nearby amenities



Aerial amenities





Alexx Montanez
alex.montanez@jll.com
+1 916 812 7135

Kyle McCulloch
kyle.mcculloch@jll.com
+1 512 225 2713