

# For lease

±43,000 SF warehouse with  
docks and yard

Lease rate: \$0.55 PSF Gross

1200 Blumenfeld Drive  
Sacramento, CA 95811

## JLL Sacramento Industrial Team


Mike Luca, SIOR  
Senior Managing Director  
+1 916 214 0466  
RE Lic. 01447904

Dominic Smith  
Vice President  
+1 916 995 9396  
RE Lic. 02106714

RJ Jimenez  
Senior Associate  
+1 940 597 9341  
RE Lic. 02248675

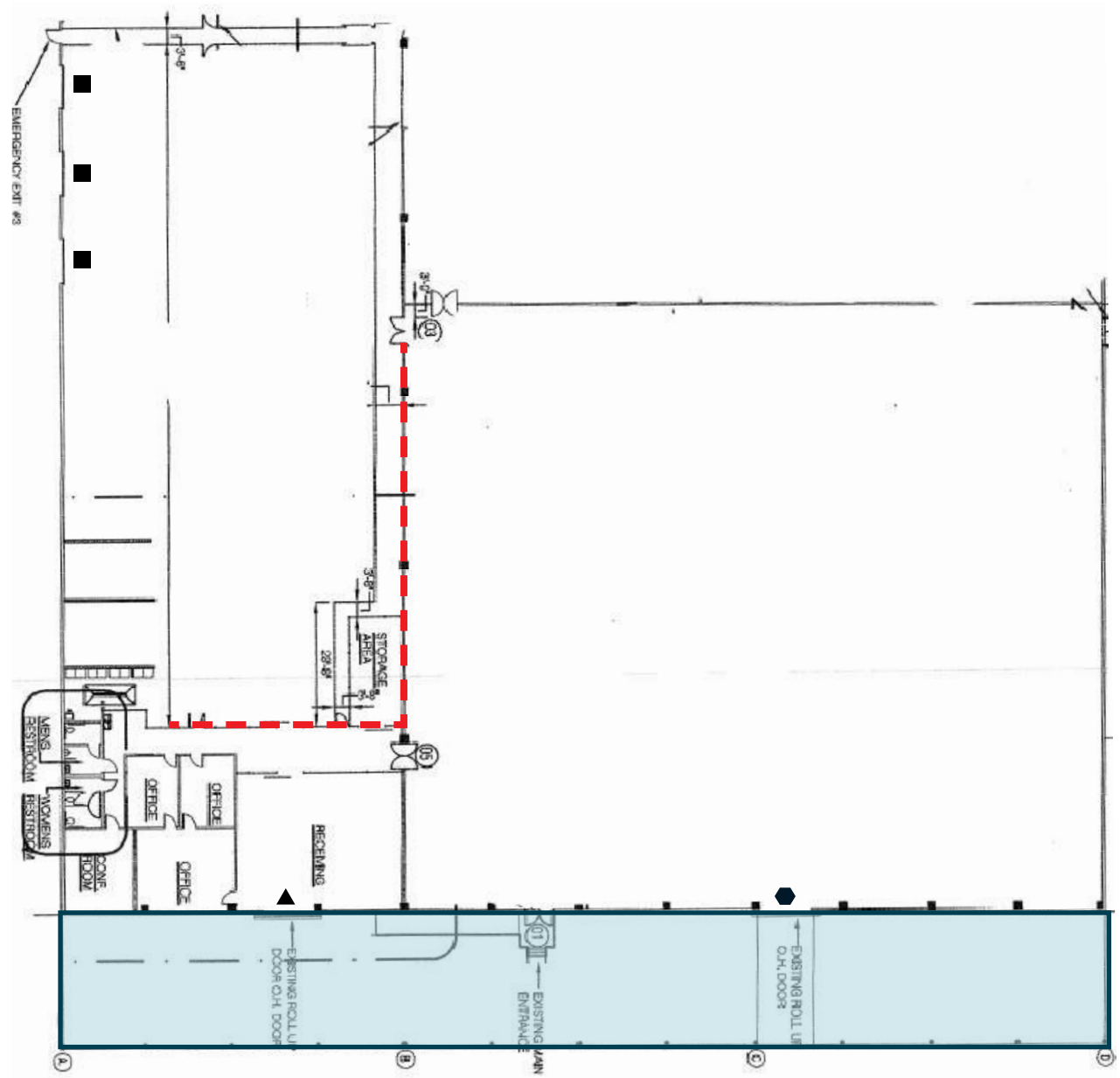


*Close to downtown and freeway access*

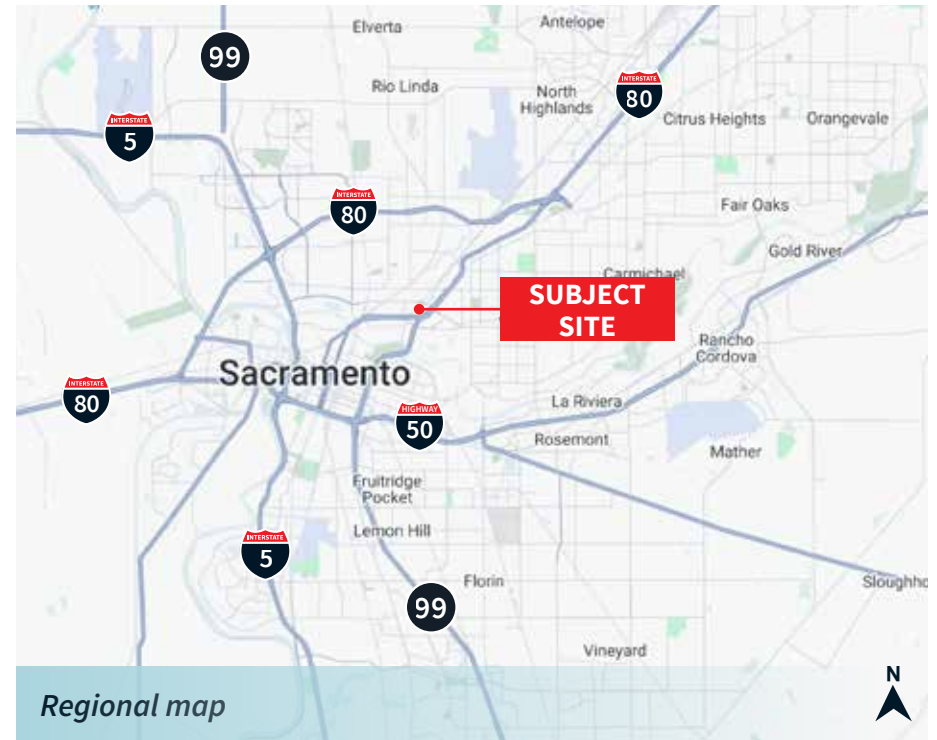
 **JLL** SEE A BRIGHTER WAY

# Property features

- Total available: ±43,000 SF
- Yard/parking area: ±31,000 SF
- Small office with rest rooms
- Zoned: M-1 (City of Sacramento)
- Clear Height: ±18'
- Grade-level ramp: one (1), ±12' x 14'
- Van-high door: one
- Dock-high doors: three
- Big Ass Fans: five
- Parking stalls: 73



- = Chain-link fence (can be removed)
- = Dock-high Doors
- ◆ = Grade-level ramp
- (blue) = Covered awning
- ▲ = Van-high Door



**JLL Sacramento Industrial Team**

**Mike Luca, SIOR**  
Senior Managing Director  
[Mike.Luca@jll.com](mailto:Mike.Luca@jll.com)  
+1 916 214 0466  
Lic. 01447904

**Dominic Smith**  
Vice President  
[Dominic.Smith@jll.com](mailto:Dominic.Smith@jll.com)  
+1 916 995 9396  
Lic. 02106714

**RJ Jimenez**  
Senior Associate  
[RJ.Jimenez@jll.com](mailto:RJ.Jimenez@jll.com)  
+1 940 597 9341  
RE Lic. 02248675

*Jones Lang LaSalle Brokerage, Inc.  
CA Real Estate License #01856260*